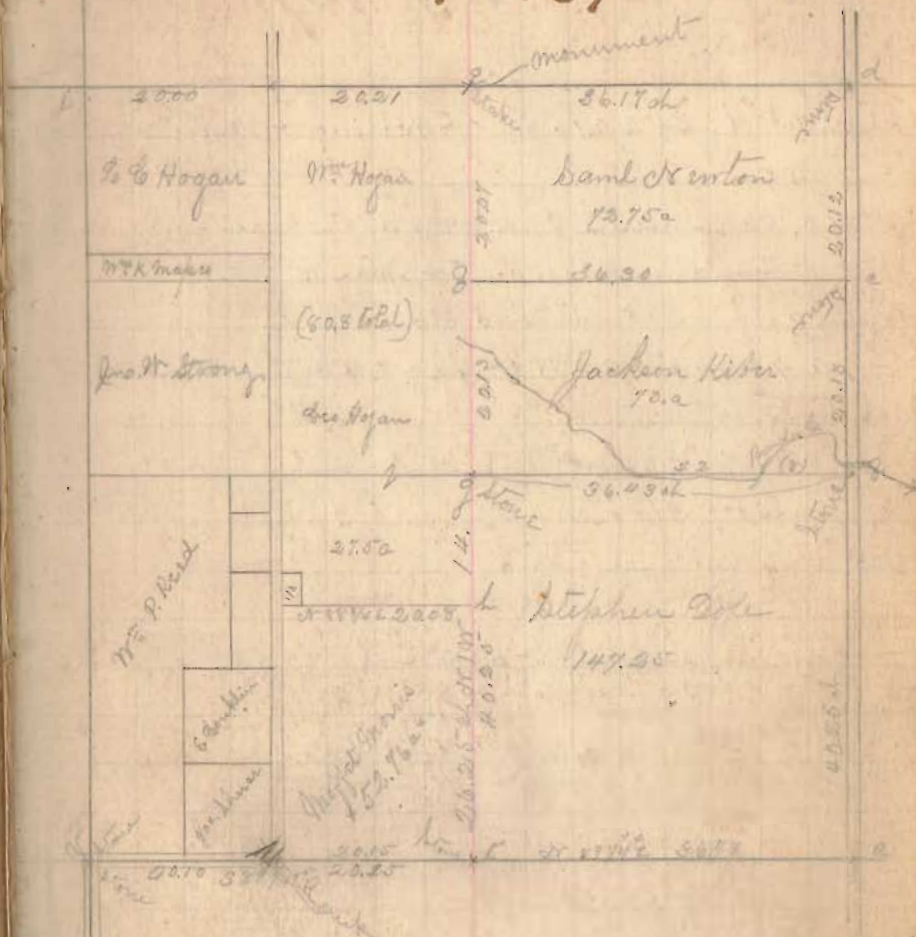


# Dec. 25, T7, R7. Shelby Co.

h = N.E. Jeffrey Morris old state  
 grit h = Ash 16' N.E. 6 1/4 E 4 1/2 W also Jeffrey 14' N.E. 6 3/4 W 19 1/4 W  
 h to g = 26.25 ch  
 h to g = 40.25 chains  
 From a to f = 40.25  
 at 42.50 ch best bar on Brandywine Cr  
 at 60.34 ch = Kiber & Newton Stone = 20.13 ch  
 + 80.52 ch stone N.E. = Dec 25 at N.E. & S. Newton  
 d to e = 36.17 ch d = stone

July 17-84 planted monument at E north line  
 Dec 25 at front other state once set monument marked  
 Oracle { 824 87 } Oracle { 8215 } E Hogan or Shelby  
 R7 { 1884 }

# Dec 25, T7, R7.



Government survey field notes grit L = Reed 22' N 51 W 1  
 and White Bush 5' S 20 W 10'  
 Dole corner to Reed 15' S 20 E 17' W Lumber 6' S 20 W 12'  
 Dole corner to 35.70 S W 40

346

INDEXED ON MAP