

Shelby Co.
Sec 24 T7R7

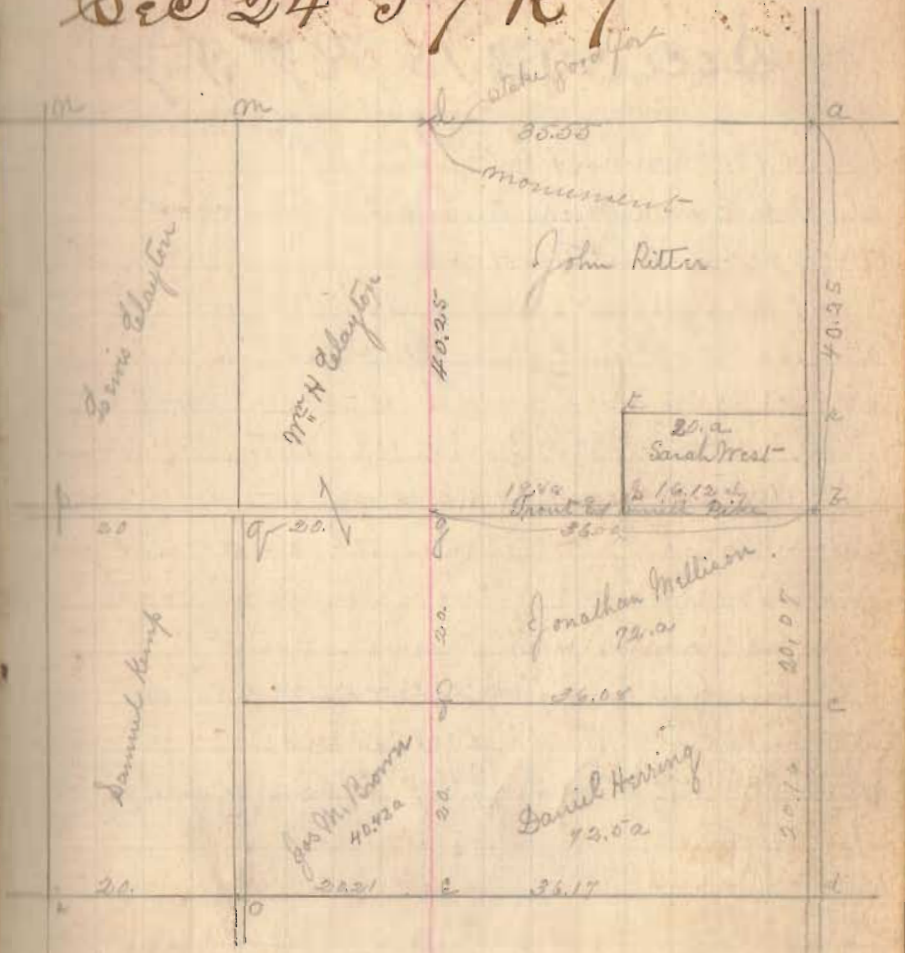
Start at d. at 20.16 ch to Herring + Mellison
 = d to c = 20.16 ch
 at 40.23 ch center Trout + Smith pike
 Start at sand monument on T + spike at 33.00 chains
 West end of pike at supposed old co line
 To a 40.25 ch a = d to c see 24 at 5 links South of
 ash tree 24" diam
 Start at point a run toward h from supposed
 co line at 31 ch
 Start at sand monument

Planted monument at stake l

1857 side { 13 57 } said { 3 24 } Cobyan or Shelby
1854

July 17-54

Sec 24 T7R7



Old field in Sec 1 = Elm 10° N 15° W 20 + Black 14° 33' 00" - 24

347

INDEXED ON MAP