

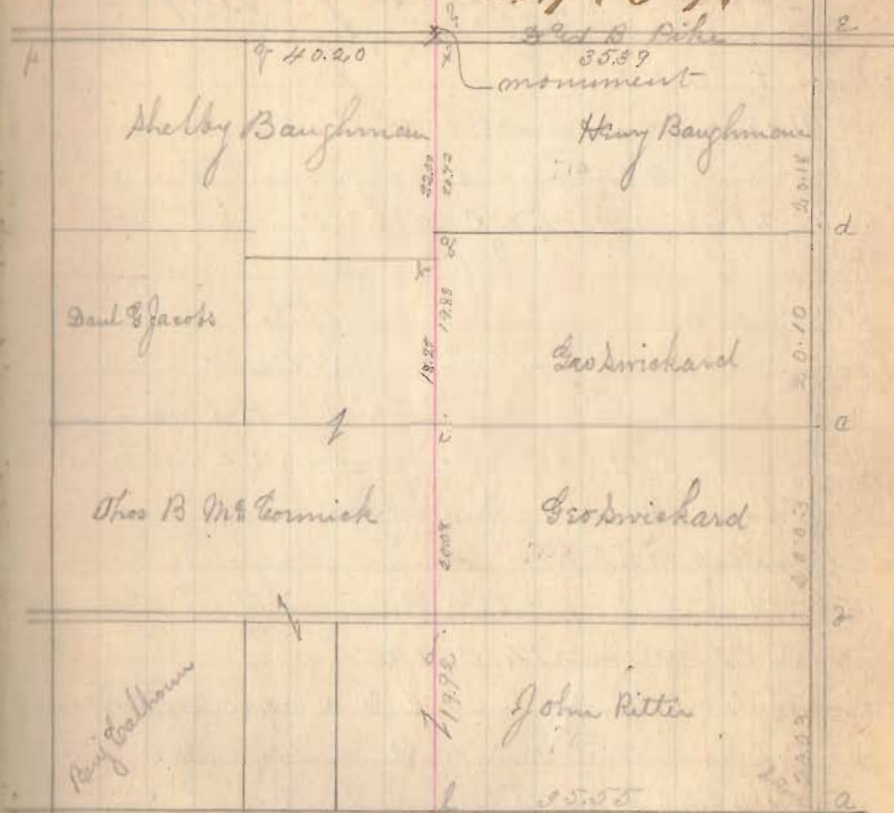
Shelby Co.
Sec No 13 R 7 T 7

at 50.174 Lumber & Baughman
 Mark at land on eas toward ?
 at 1492 of cent road
 51.00 point is supposed
 at 50.225 of line (John) Mc Cormick
 50.23 of fence & p. at 50.23
 50.25 same point ? center pike, Stevenson
 find like which set at 8.0' E of center of pike stake
 set by Baughman and another stake 3.25' E of cent pike

Planted monument to mark point F as
 yellow iron 1/2 cent pike or 1/2 or 25 feet
 monument marked as follows

W side { S 12 1/2 W R 7 } E side { S 12 1/2 E 1/4 } E Logan W Shelby

Sec No 13 R. 7. T 7



Old field notes or as 15° S 47° W 32 + B Ebb 12° N 65° W 20

348

INDEXED ON MAP