



APPROVED

5-10-13

# Lee Surveying and Mapping Co., Inc.

Land Surveys • Topography • Subdivisions • Construction Layout

117 N. Madriver St.  
Bellefontaine OH 43311



Phone: (937) 593-7335  
Fax: (937) 593-7444  
surveys@lsmcinc.us

## WRIGHT 80.419 ACRES

Lying in Section 16, Town 7, Range 8, Bloomfield Township, Logan County, Ohio.

Being all of the Hershel S. Wright, Successor Trustees 80 acre tract as deeded and described in Official Record 1215, Page 942 of the Logan County Records of Deeds and being more particularly described as follows:

Beginning on a railroad spike found on the intersection of the south line of Section 16 and the center-line of County Highway 21, being the southwest corner of the southeast quarter of said Section.

THENCE, with the west line of the southeast quarter of Section 16, within the right-of-way of County Highway 21, N 01°-10'-39"E, a distance of 1323.58 feet to a 2 inch square iron bar found on the northwest corner of the south half of the southeast quarter of Section 16.

THENCE, with the north line of the south half of the southeast quarter of Section 16 and the south lines of the Brian K. Knief 20.259 acre tract (O.R. 4, Pg. 621), the Phyllis B. Yeasel, Trustee 20 acre tract (O.R. 433, Pg. 45, Tract I, Fifth Parcel), and the Muchinippi Creek Farm LLC, 15 acre tract and 20 acre tract (O.R. 1010, Pg. 309, Tract VI and Tract V), S 88°-46'-04"E, a distance of 2666.18 feet to a 3 inch angle iron post found on the northeast corner of the south half of the southeast quarter of Section 16, passing a 5/8 inch iron rod set at 30.95 feet.

THENCE, with the east line of Section 16 and the west line of the Monte Heppard, Co-Trustee and Dawn Heppard, Co-Trustee 237 acre tract (O.R. 1124, Pg. 720, Tract II), S 01°-43'-44"W, a distance of 1310.51 feet to a 14 inch concrete post found on the southeast corner of Section 16.

THENCE, with the south line of Section 16 and the north lines of the RFB Knief LLC, 80 acre tract (O.R. 697, Pg. 35, Tract V) and the Jerry L. Knief, as Trustee, 80 acre tract (O.R. 277, Pg. 489, Parcel IV), N 89°-03'-05"W, a distance of 2653.59 feet to the point of beginning, passing a 5/8 inch iron rod set at 2625.78 feet.

Containing 80.419 acres, of which 0.847 acre is within the highway right-of-way.

Property is subject to any and all previous easements and rights-of-way of record.

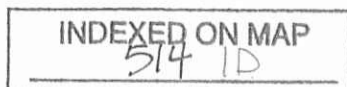
The basis for bearings is the west line of the north half of the southeast quarter of Section 16, being N 01°-11'-00"E, and all other bearings are from angles and distances measured in a field survey by Lee Surveying and Mapping Co., Inc. on May 3, 2016.



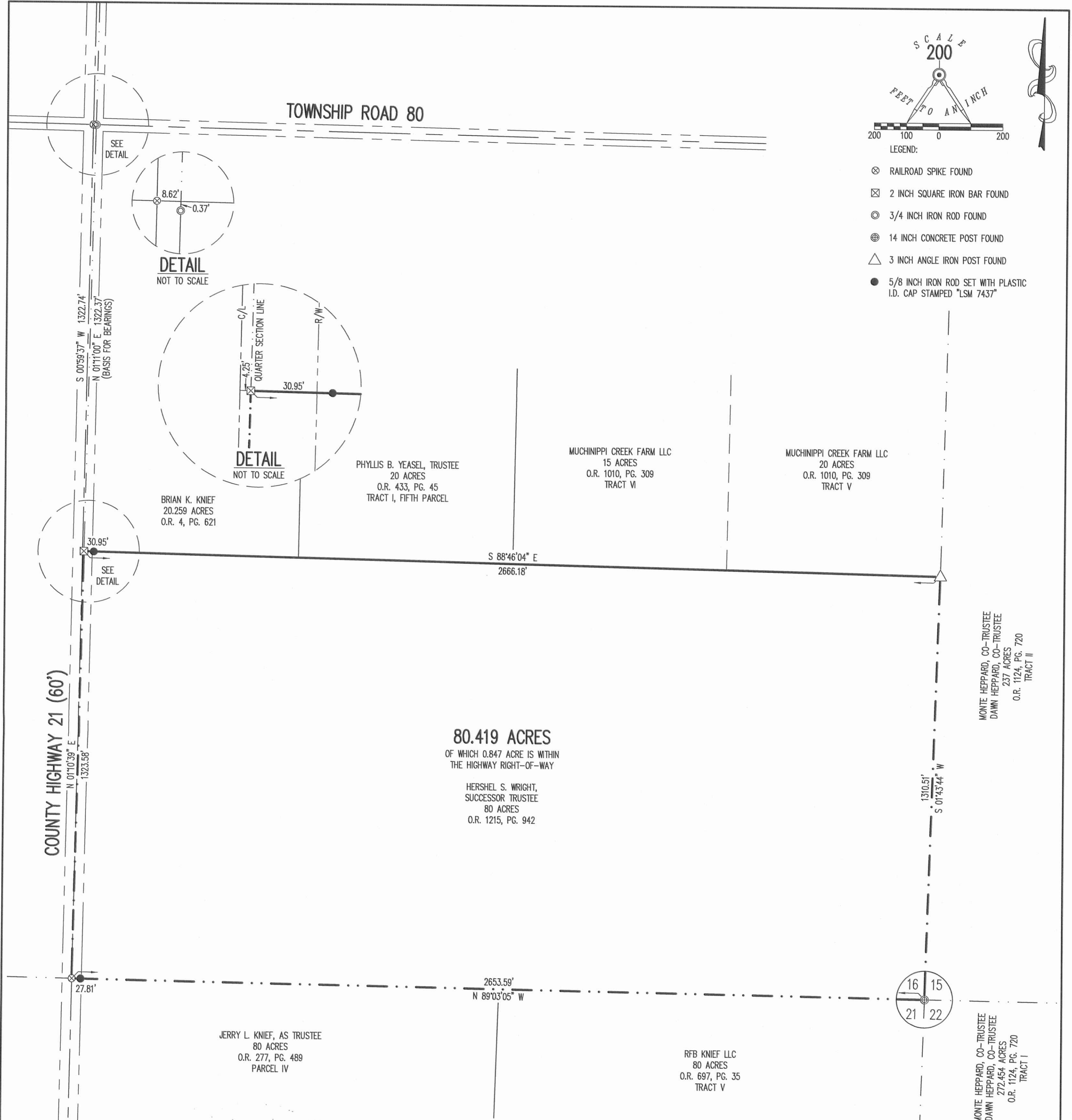
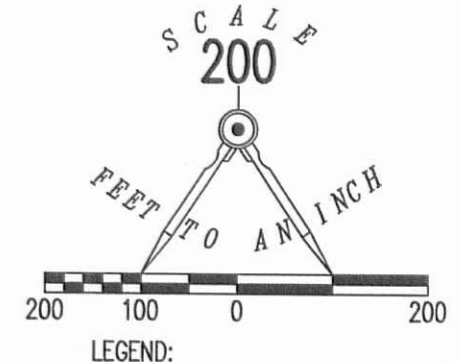
Description prepared by:

*William K. Bruce*

William K. Bruce  
Professional Surveyor 7437  
May 4, 2016



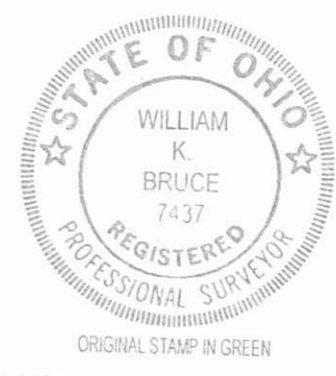
61000416



**80.419 ACRES**  
OF WHICH 0.847 ACRE IS WITHIN  
THE HIGHWAY RIGHT-OF-WAY  
  
HERSHEL S. WRIGHT,  
SUCCESSOR TRUSTEE  
80 ACRES  
O.R. 1215, PG. 942

**RETRACEMENT SURVEY OF THE  
HERSHEL S. WRIGHT,  
SUCCESSOR TRUSTEES  
80 ACRE TRACT  
OFFICIAL RECORD 1215, PAGE 942  
SECTION 16, TOWN 7, RANGE 8  
BLOOMFIELD TOWNSHIP  
LOGAN COUNTY, OHIO**

SURVEYED BY:  
*William K. Bruce*  
WILLIAM K. BRUCE  
PROFESSIONAL SURVEYOR 7437  
MAY 3, 2016



COPYRIGHT 2016 BY:  
**LEE SURVEYING & MAPPING CO., INC.**  
117 North Madriver Street  
BELLEFONTAINE, OHIO 43311  
(937) 593-7335  
WWW.LSMINC.US  
surveys@lsminc.us

THIS SURVEY WAS PREPARED IN THE ABSENCE OF  
A COMPLETE AND ACCURATE TITLE SEARCH AND  
DOES NOT GUARANTEE TITLE.  
  
2 WORKING DAYS  
**BEFORE YOU DIG**  
CALL TOLL FREE **800-362-2764**  
OHIO UTILITIES PROTECTION SERVICE

INDEXED ON MAP  
514 1P