

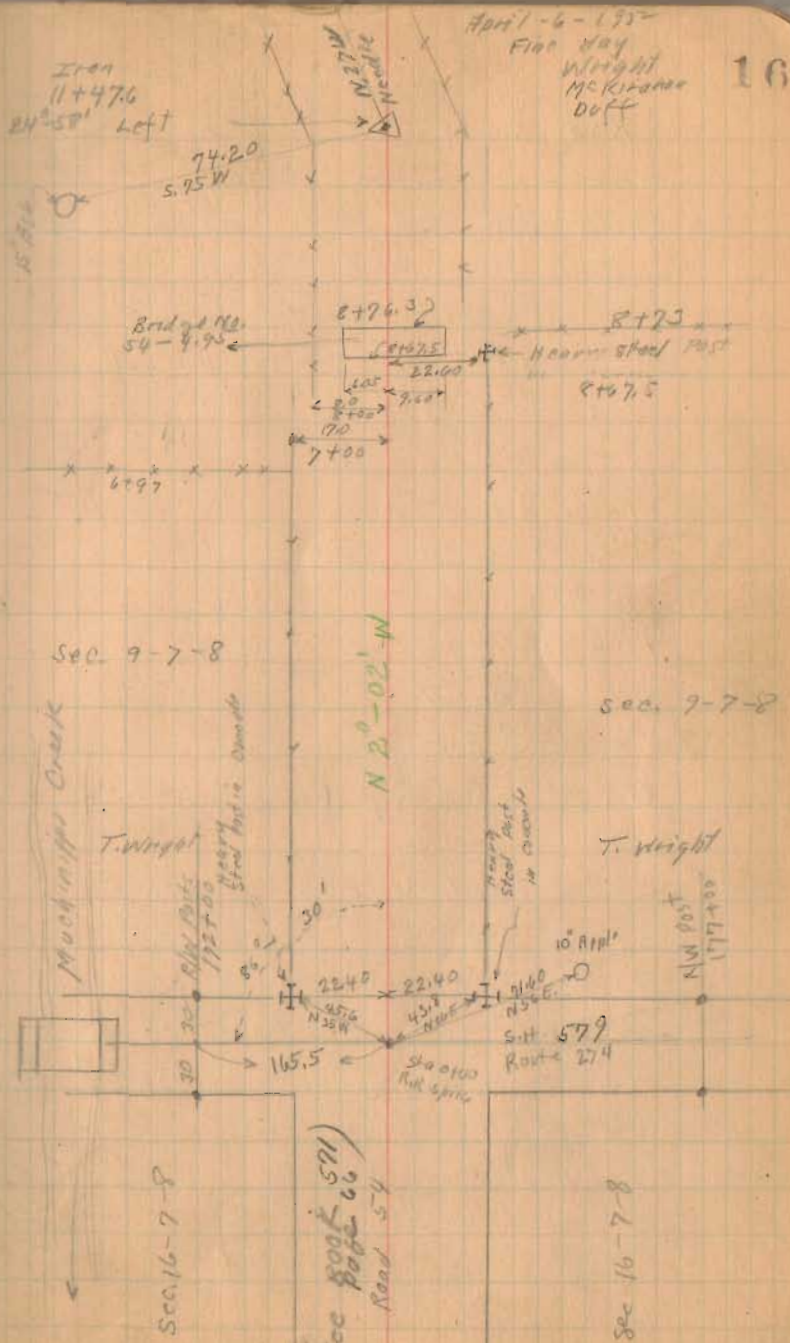
Road 54
Bloomfield and Stokes

From Miami River To Santa Fe 60'
Vol. 4 Page 162 - 163 1835

Pike record 4 Page 219 and 220 55'
1876

Stakes Found 25' from ~~to~~ for 50' Road.

(1367)
INDEXED ON MAP



Road No. 54

Concrete R/W. Monuments placed

M^c Kirahan

Duff

11+00	Left
5+00	Left
11+00	Both
12+00	
15+00	Sides
17+00	
19+00	Right
21+00	Right
27+00	Both
31+00	

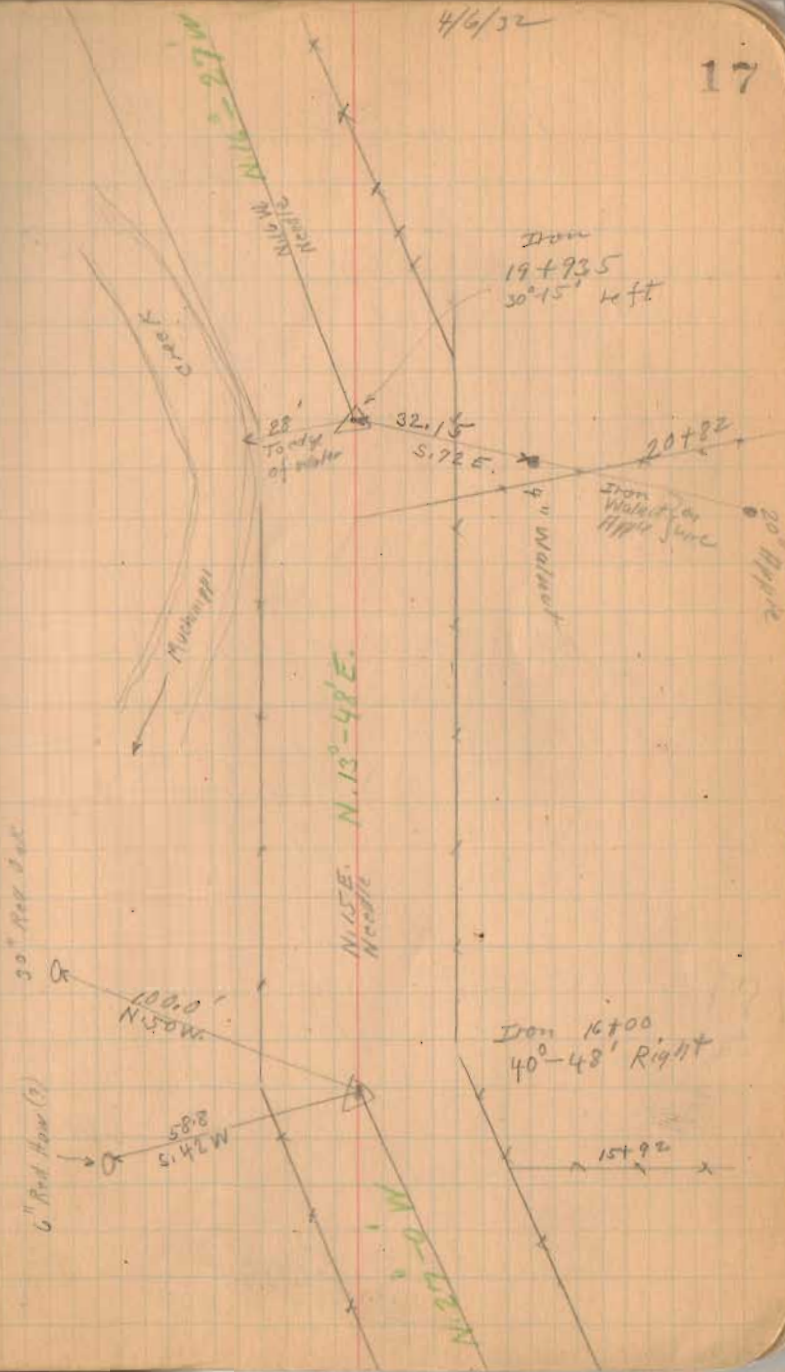
38+00	Both Sides
39+00	Right
43+00	Both
44+00	
48+00	Side
49+00	
52+00	

Surf May
14-1932
M^c Kirahan
Duff

1367
INDEXED ON MAP

4/6/32

17



Road No 58

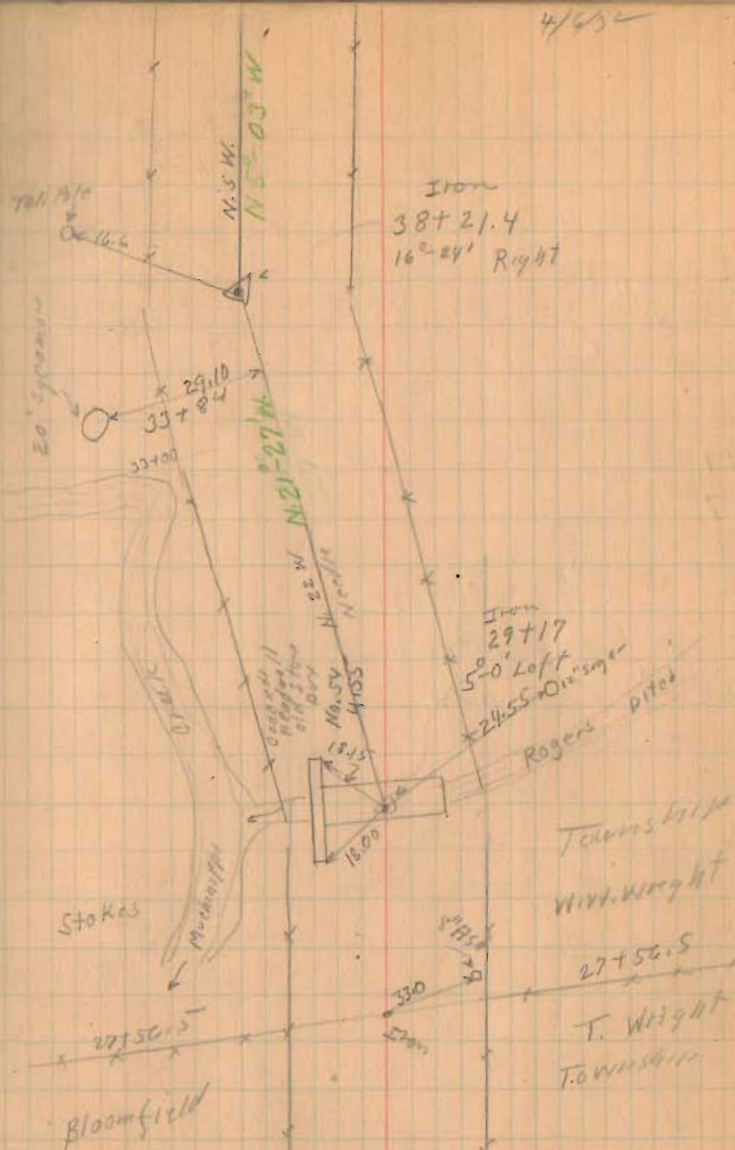
Right-of-Way Concrete Posts set

Both Sides	Right-of-Way	Surveyor	Left-of-Way	Surveyor
53	124			
55	125			
57	133			
65	135			
67	143+87	May-17-1932	149	May-20-1932
70+87		M ^{rs} Kirshner		M ^{rs} Kirshner
73	151	Duff		Duff
75	152+67			
87	157			
95	160			
97	171			
107	185			
109	186			
115	190			

(1367)
INDEXED ON MAP

4/45

18



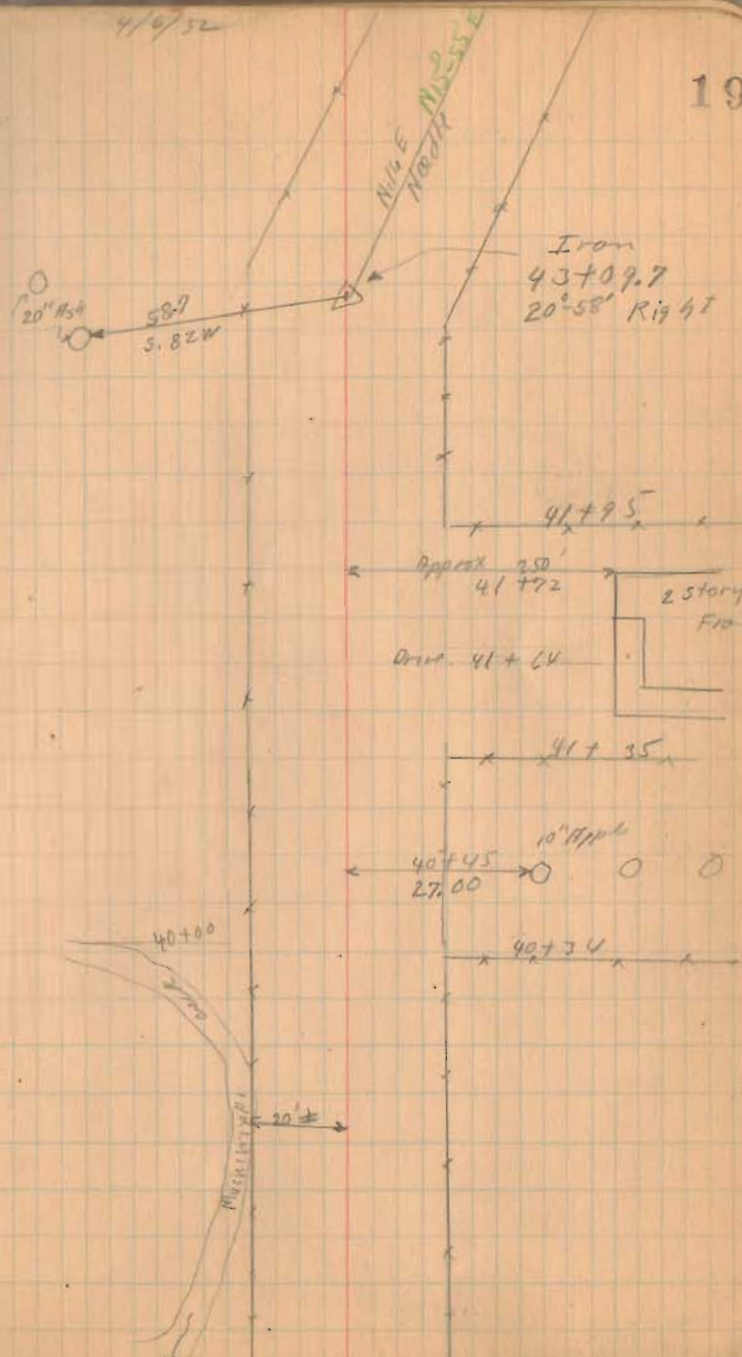
Road 54

- 191
- 199+54
- 211
- 213
- 221
- 227
- 228
- 235
- 245
- 246
- 255
- 266

May-21-1932
M^cKirahan
Duff.

May-23-1932
M^cKirahan
Duff

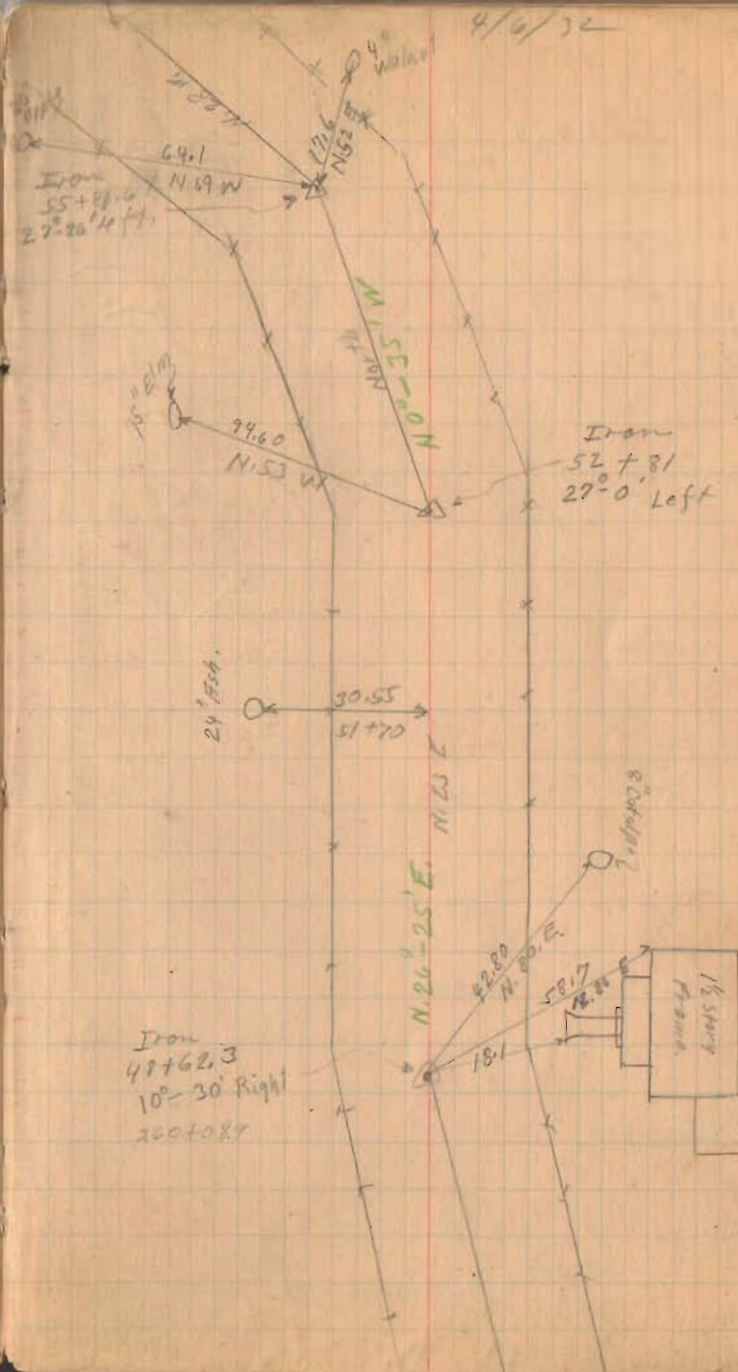
1367
INDEXED ON MAP



Road 54

20

4/6/32

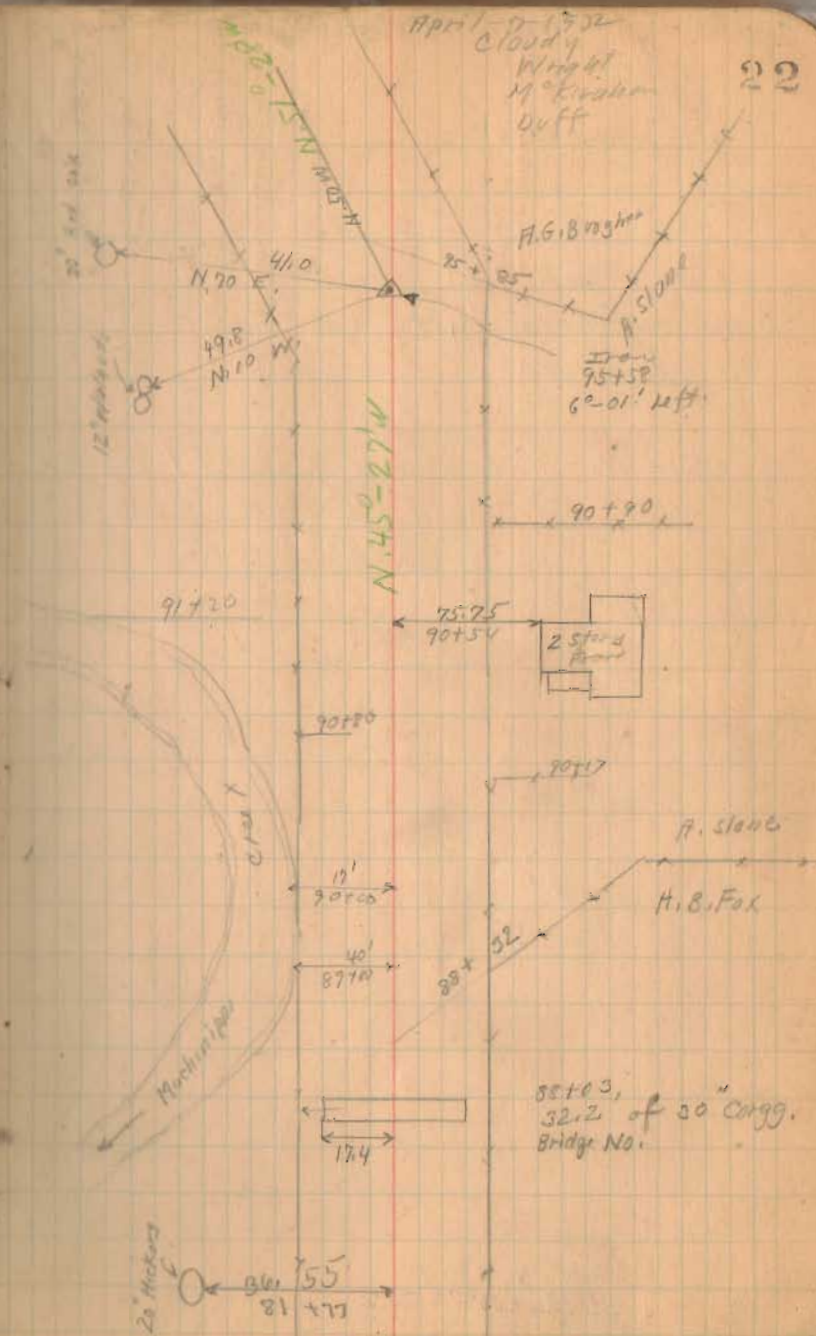


1307

IDEAL ON S&S

Road 54

1369
INDEXED ON MAP



Road 54

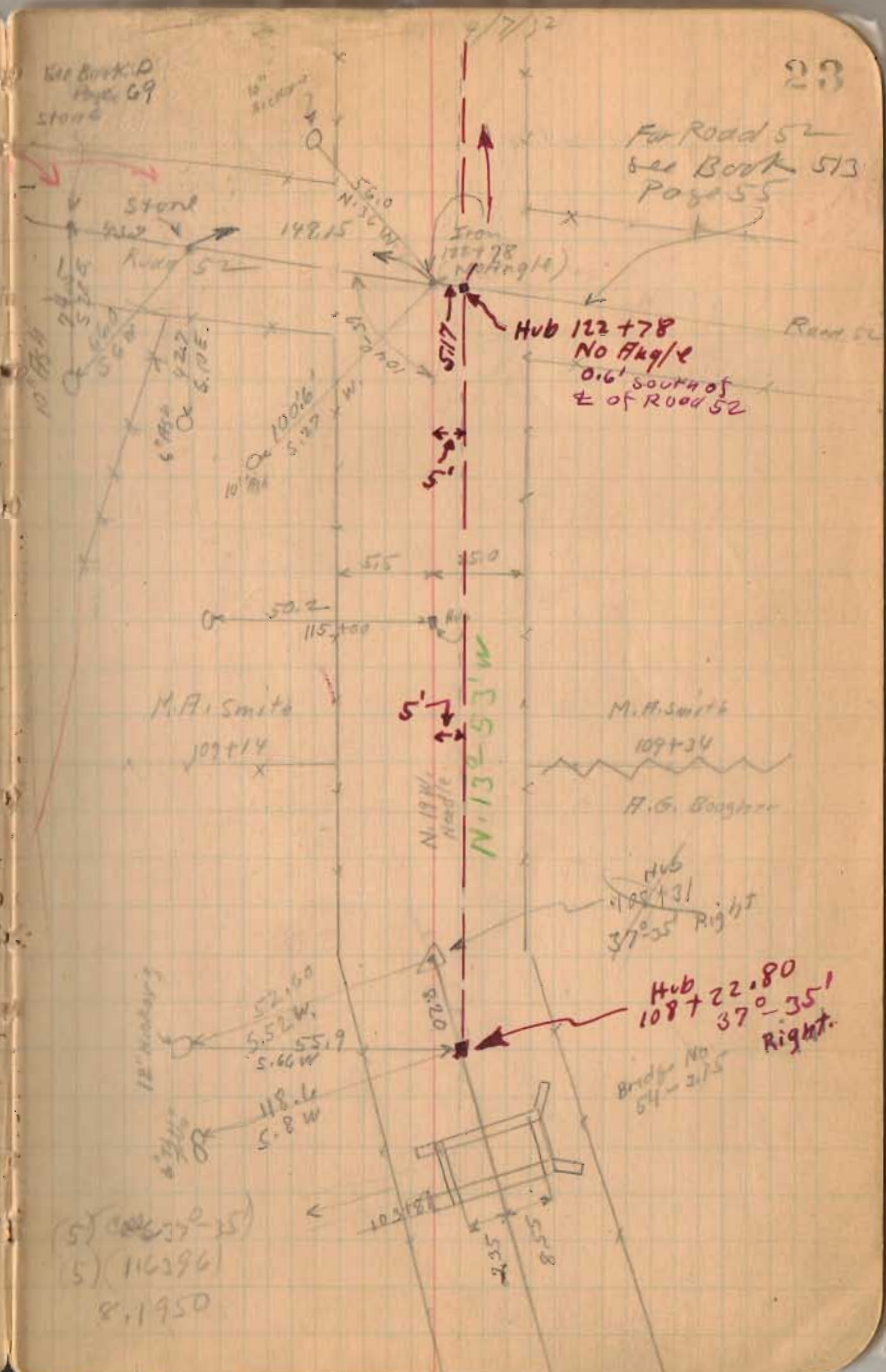
Note line was moved 5' to Right or East.

(Road 52 see Road Record / Page 370
" " 2 " 230

1367

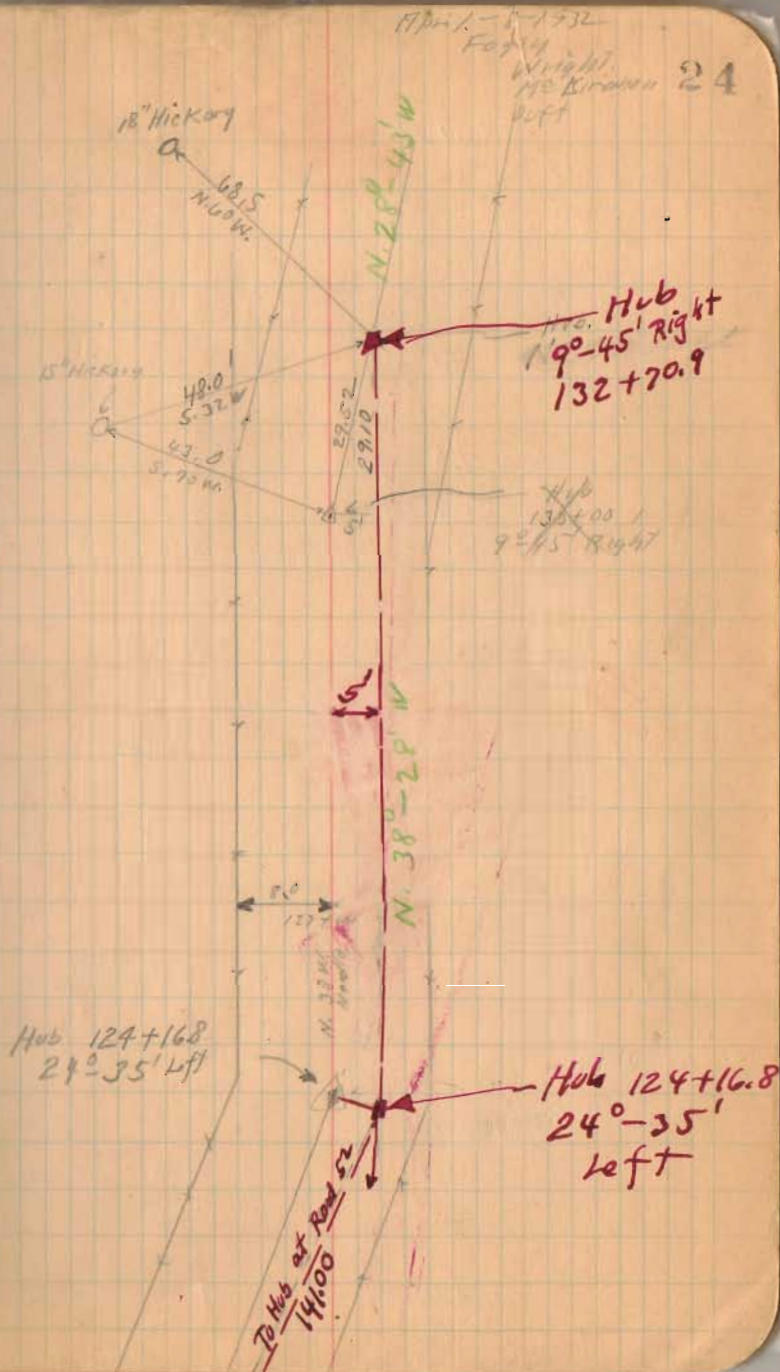
INDEXED ON MAP

See Book
97
Page 39, 37



Road 54

1367
INDEXED ON MAP



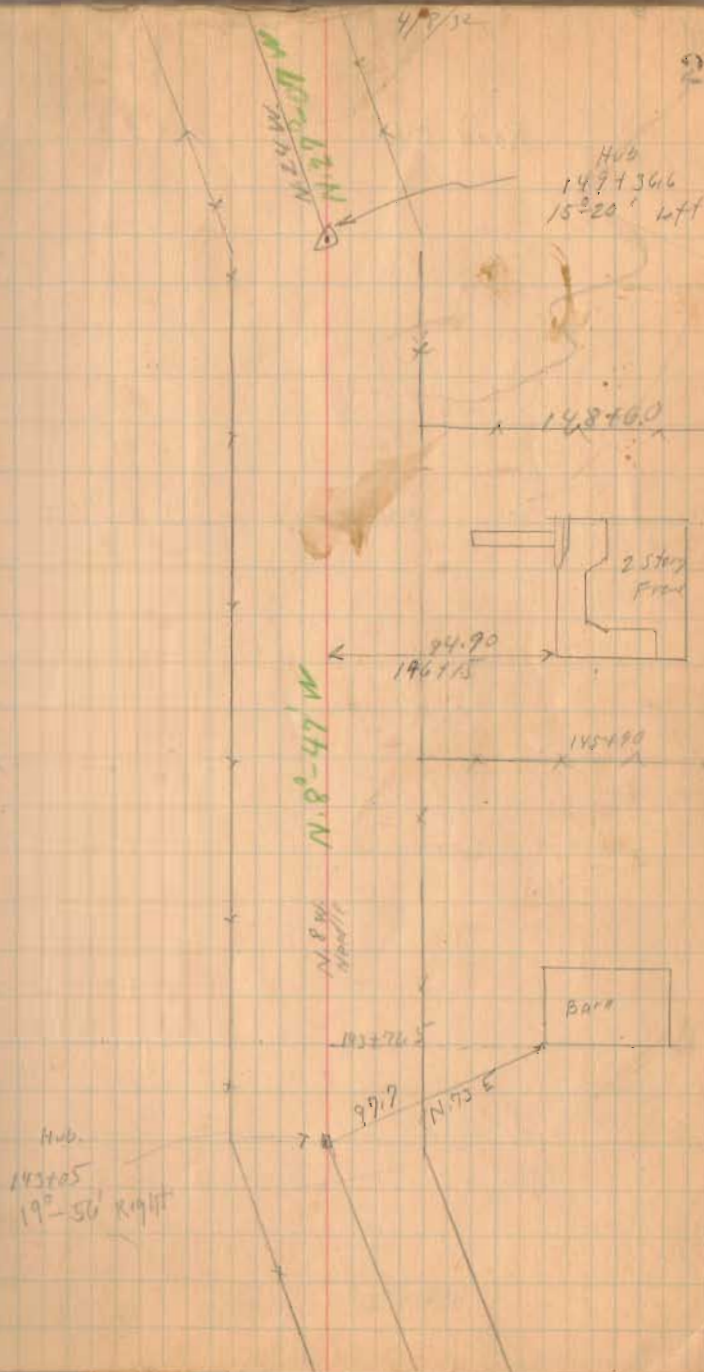
Road 51

29.5
45
73.5

1009

INDEXED ON MAP

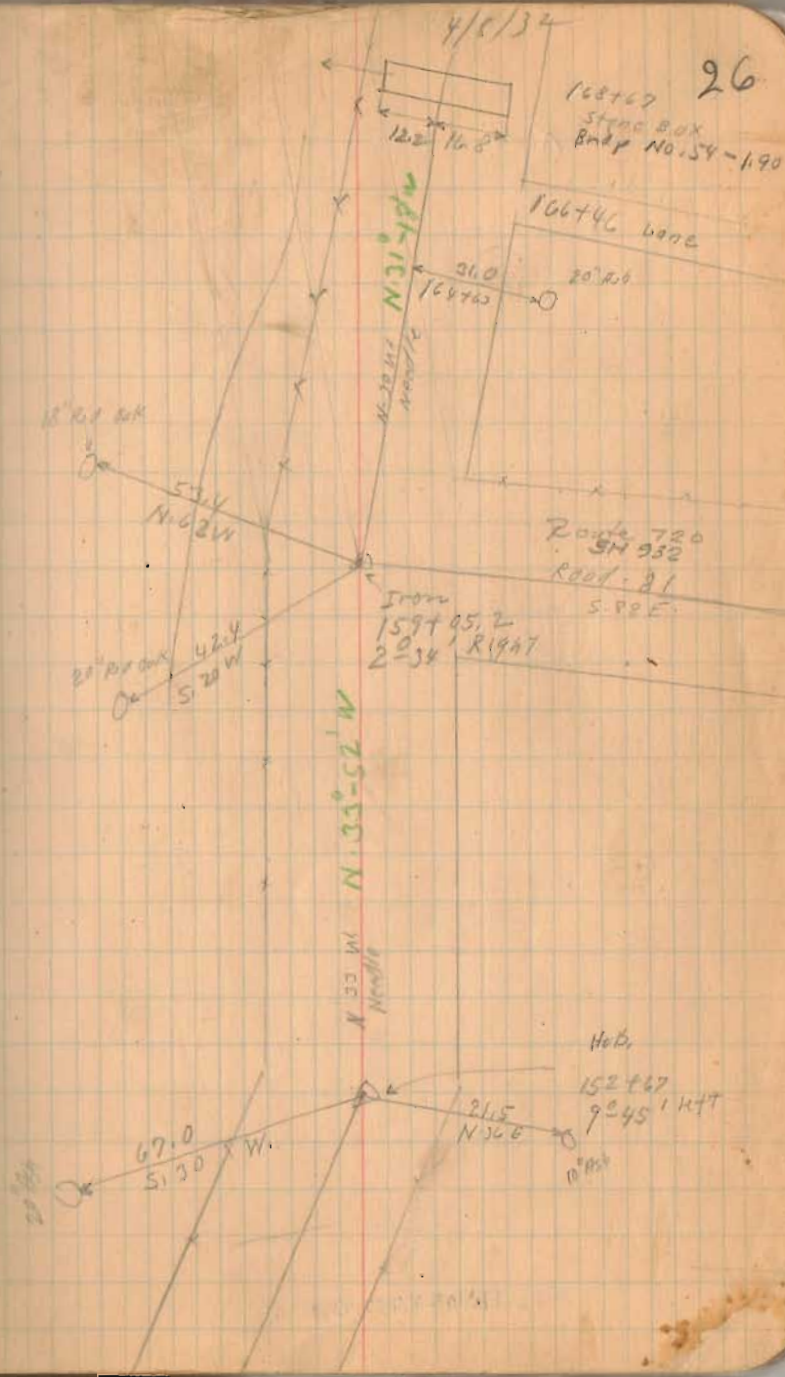
25



Road 54

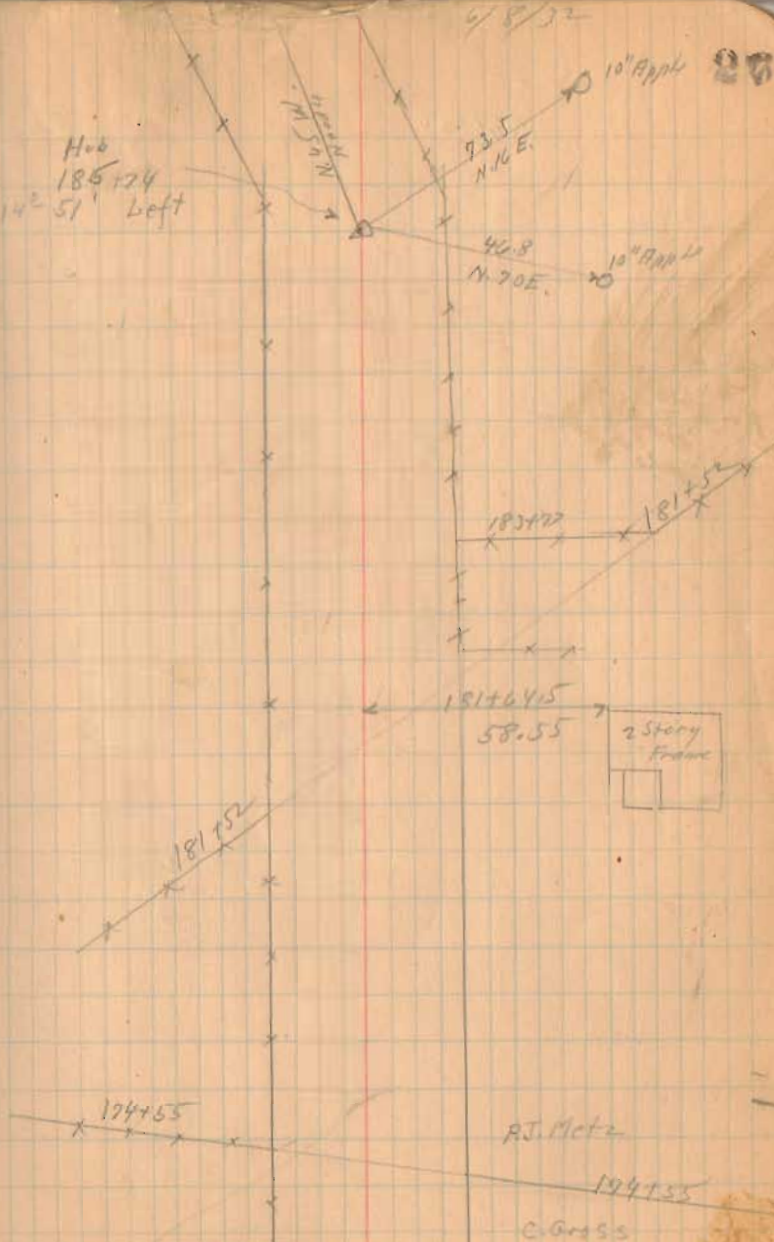
29.0
12.2
16.8

(1267)
INDEXED ON MAP



Road 54

Hub
185124
142° 51' left



(1367)

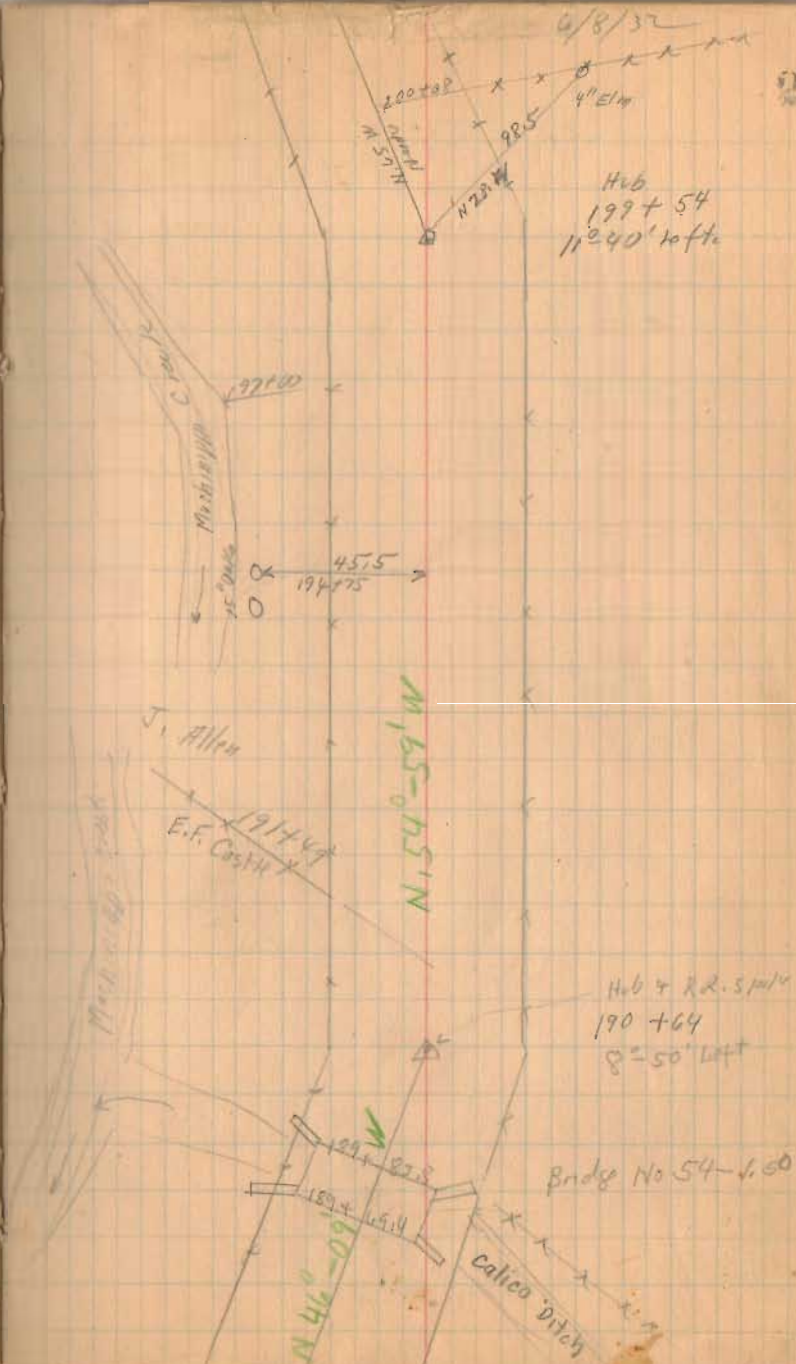
INDEXED ON MAP

Road 54

75
23.5
94.5

INDEXED ON MAP

1762



Road 54

April 15-1952

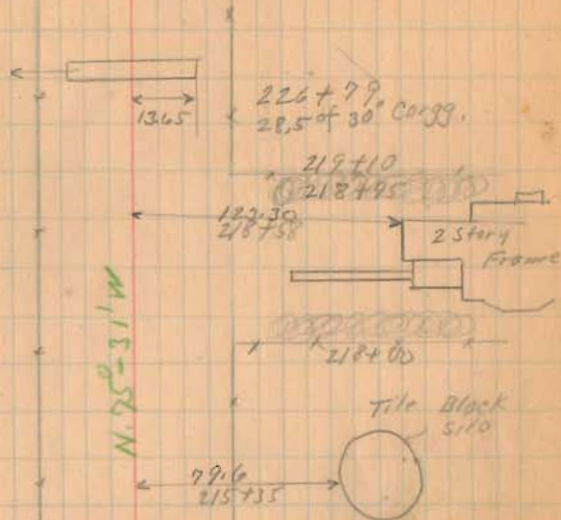
Clear

Night

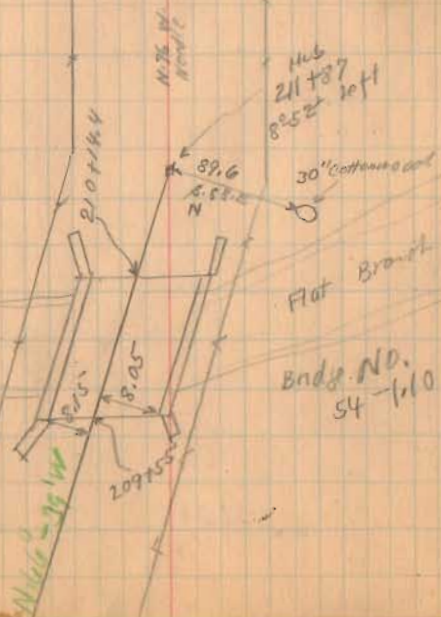
McKirahan

Duff

29



Mississippi Creek



1367

INDEXED ON MAP

Road 54

235

22763
14
17270

(1369)
NEW OR LEARNED ON WAY

Life Ins. Co.

227+06

Mary D. Miller

220+44

99.7

230+24

2 story
farm

100 ft.

10" AP
12" AP

46.50

N 41° E

55.05

Mary D. Miller N.E.

227+63

Hub
227+63
No Angle

J. Allen

6/15/52

30

227+80

52.00

237+03

2 story
farm

N 89° 45' W

West
110 ft.

Hub of P. 1.
227+77
14° 14' left.

k. shaft stall

Road No. 26

J. Allen

Room 54

240 + 79.6
3 + 76.2

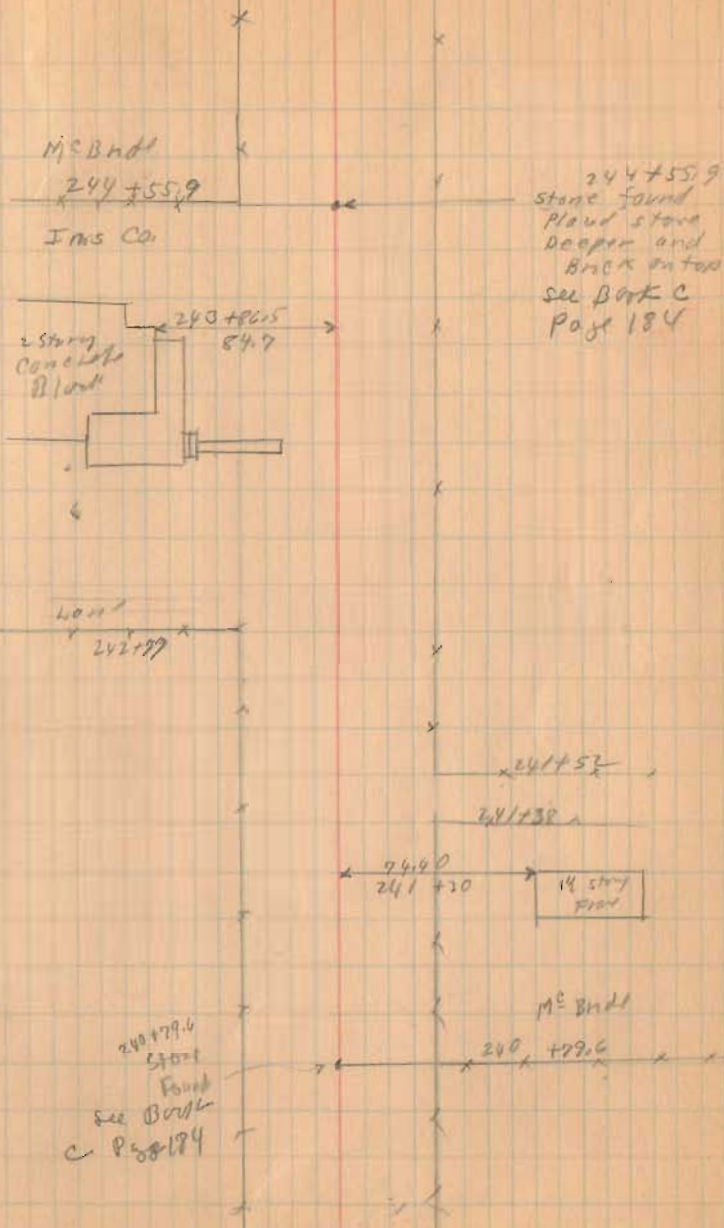
247 55.8

1367

RA 10 23 22

4/15/32

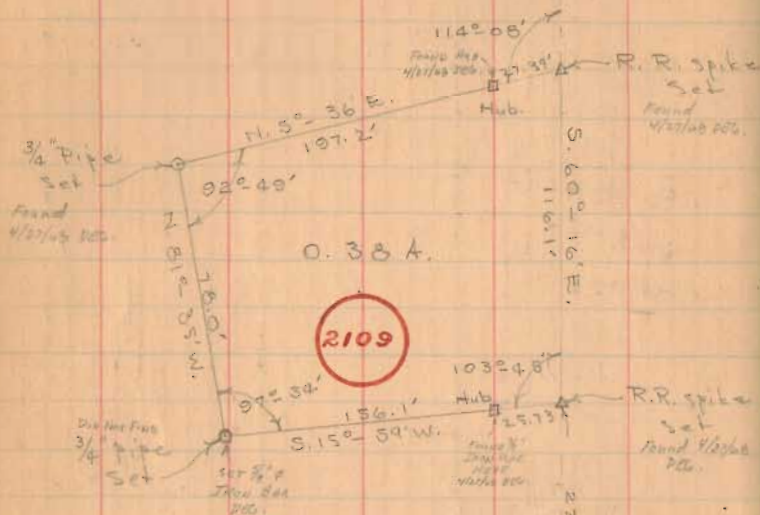
31



245

Road SW

255+00
R/W Mon.



Cecil Oakley Survey
Stokes Twp.
Sec. 30, T-6S, R-8E.

Surveyed By
Don F. Dodson
Chas. Nichols
Feb 20, 1954
50° F.

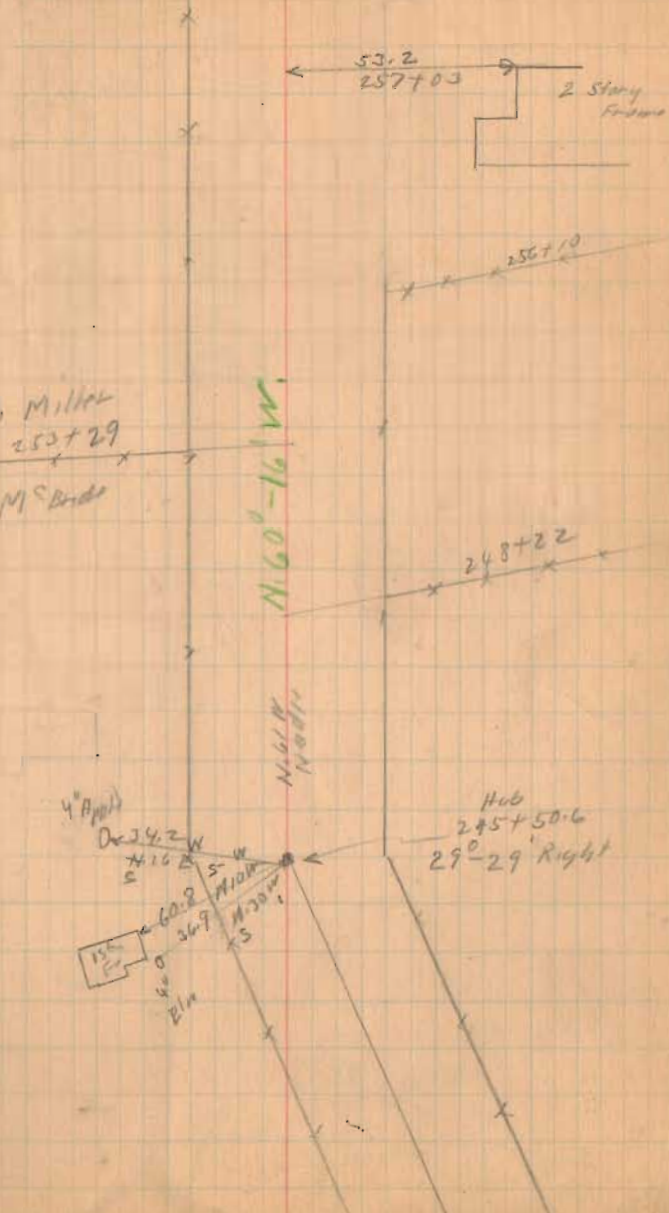
1367
INDEXED ON MAP

4/15/52

32

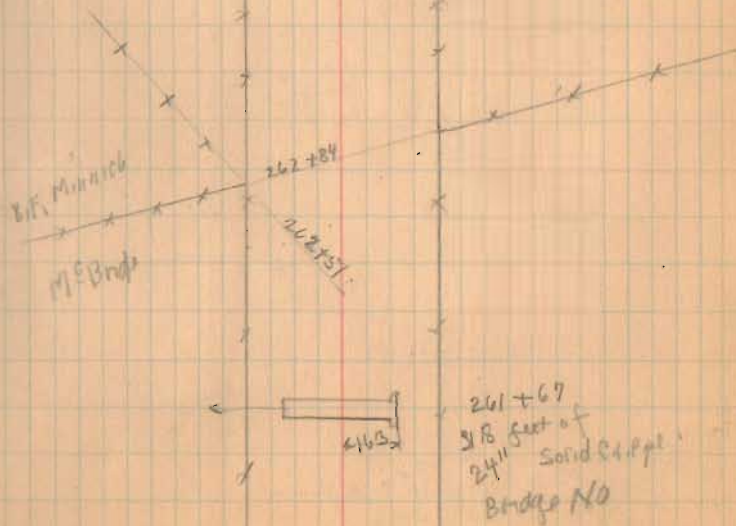
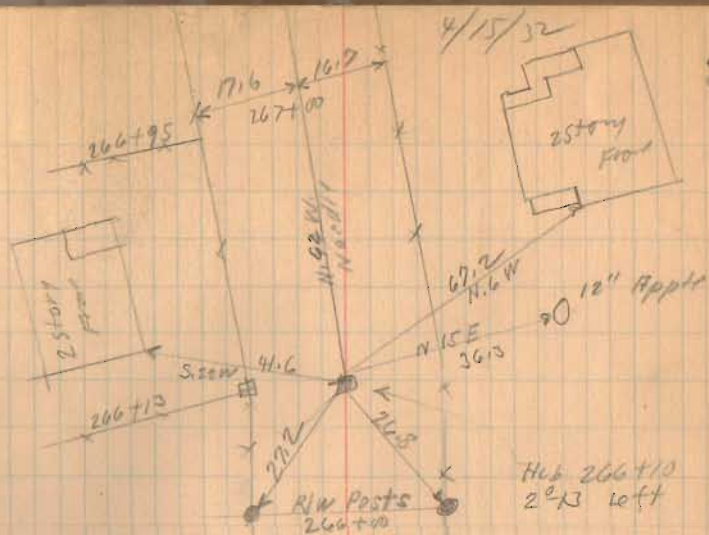
J.M. Miller
253+29
D.F. McBride

N. 60° - 16' W.



Road 54

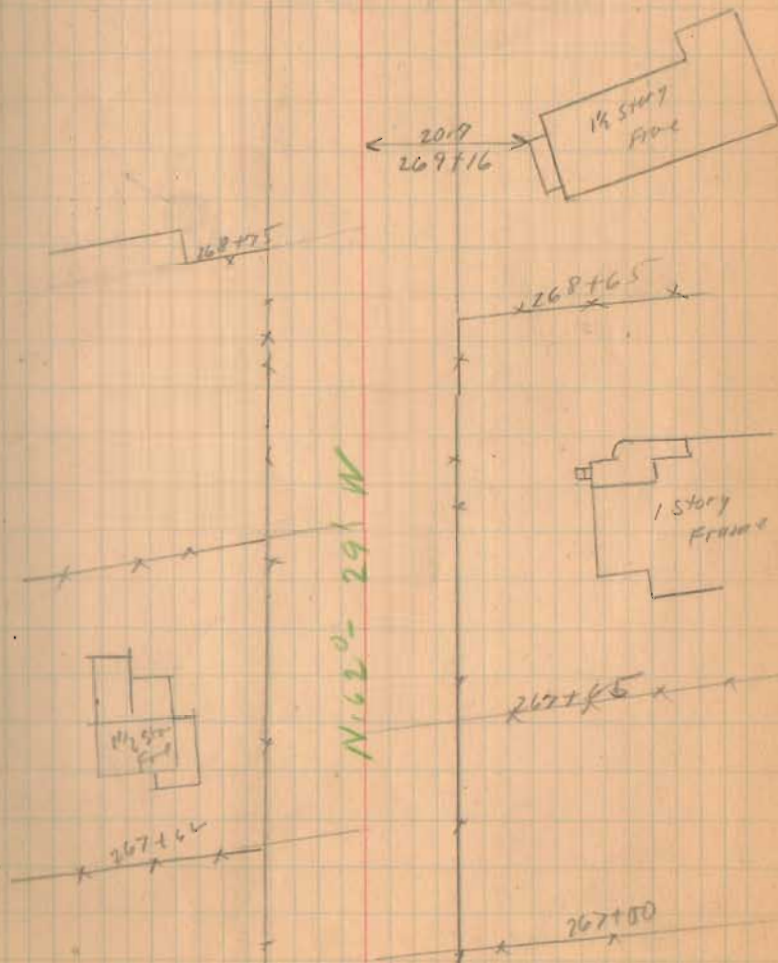
(1367)
INDEXED ON MAP



Road 54

4/15/52

34



INDEXED ON MAP
1362

Road 54

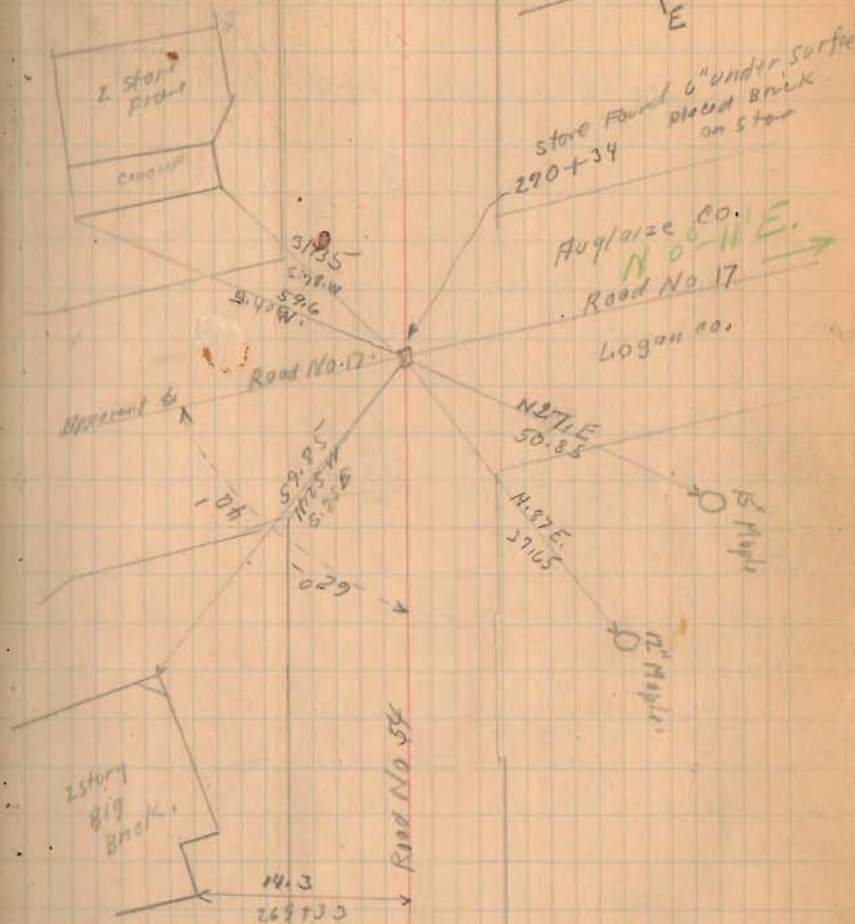
See Print Survey (1366)
Drawer R Stake Top.

Miles 5.12005 Miles

(1367)
INDEXED ON MAP

4/15/72

35



Road 54

50' Pike Record 2 Page 481

stakes 25' from \pm 1-3-5 - 6+74.75 - 8-9
11 - 12+78.75

1367
INDEXED ON MAP

April 2-1934
Clear-Water
Wright
Ed. Coe

65

Sec. 16 Town 7
E. J. Pritchard

Range 8
E. J. Pritchard

Sit. 579
Route 274

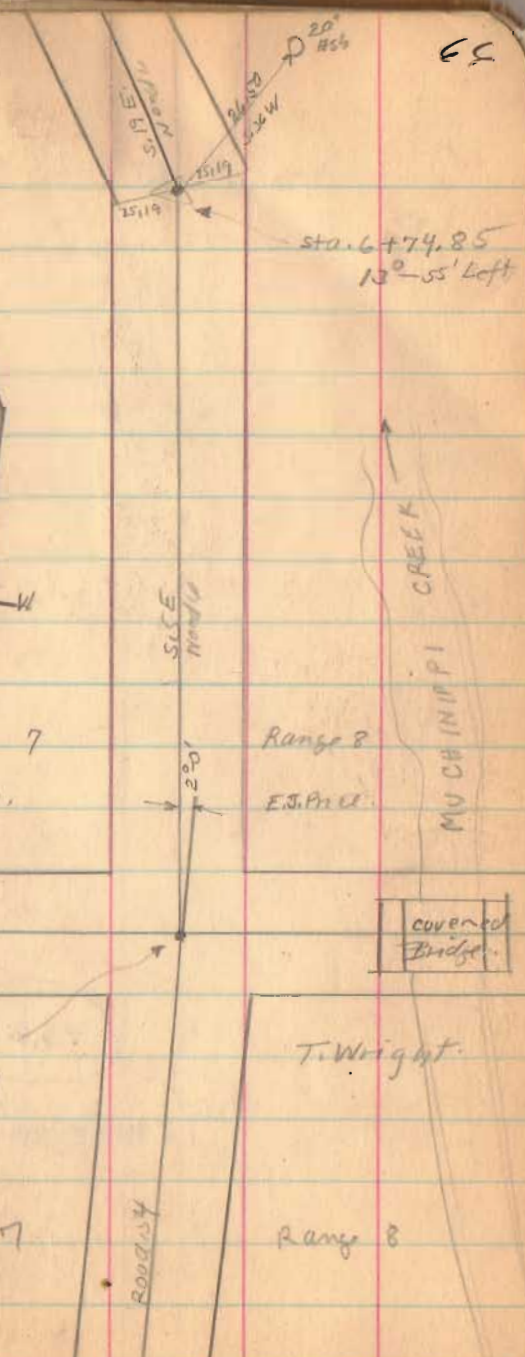
Covered
Bridge

Twigg at
Sta. 10190
Rix Spink
see Book 559
Page 16

Sec. 9 Town 7

T. Wright

Range 8



Road 54

1367

INDEXED ON MAP

4-2-34

67

