

Road 23
Bloomfield Twp.

60' Commissioners Journal

Vol. 6 Page 222

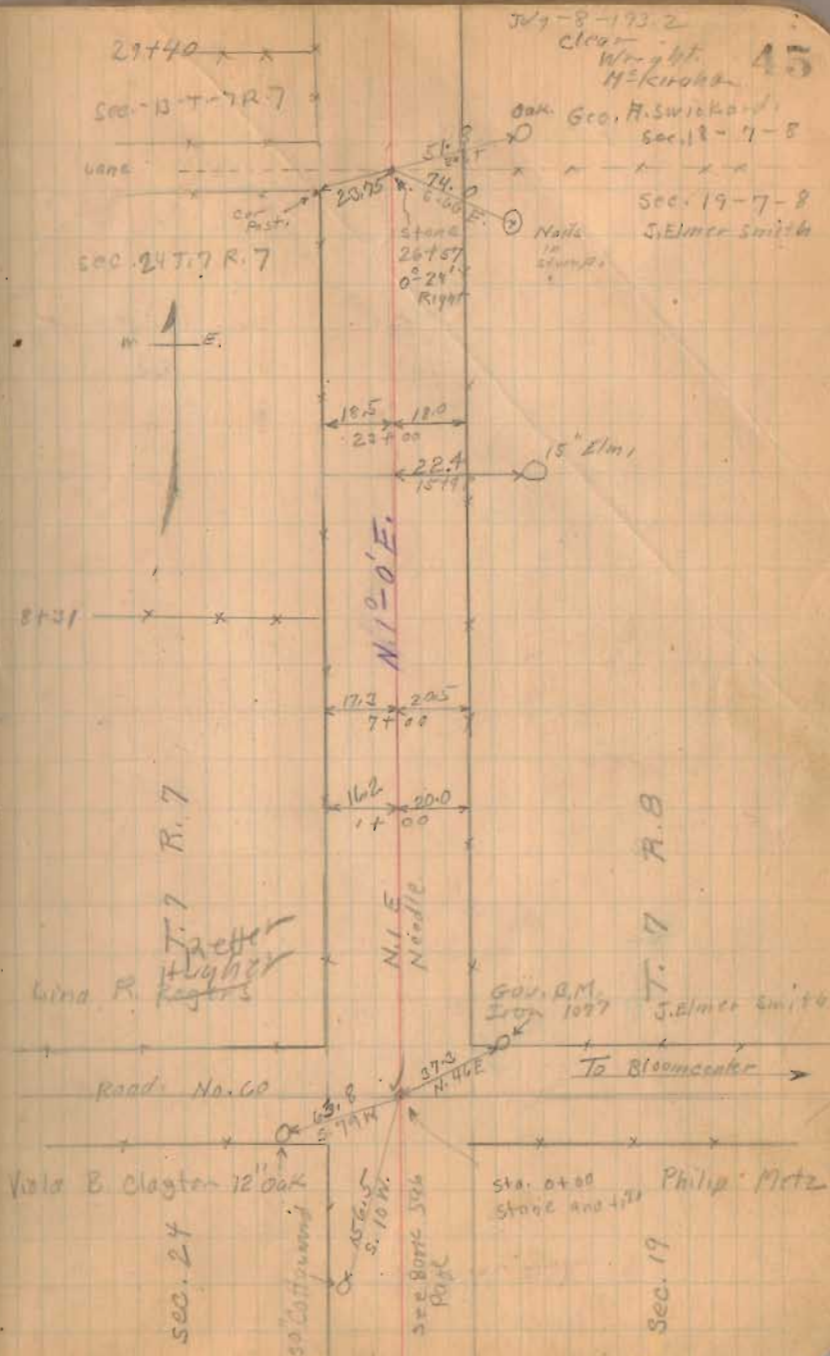
Vol. 6 Page 265

Vol. 6 Page 308

stakes placed 25' from & for
50' road.

Sta. 1-3-5-7-9 etc.

1406
INDEXED ON MAP



Road. 23

7963
5340.5
7623.5

Length. 7963 Feet.
" 1.5081 Miles

1406
INDEXED ON MAP

July 9-1902
Clear
Wright,
MEXICO

47

Sec. 12 T. 7 R. 7

RR. Spine over

Station

79463

Sec. 8014

518 Post 10

Front of Pond
Pike
Pike Book
Page 76

Sec. 9 T. 7 R. 8

667

30'

SH. 572

Route 274

420

30'

7840

Helen J. Sheets

Sec. 13 T. 7 R. 7

165 23.4

77400

Geo. A. Smickard

Sec. 18 T. 7 R. 8

155 27.2

67400

Helen J. Sheets

66122

Geo. A. Smickard

N. 10-24' E.

15.0 28.2
59400