

FB 559

2660
1847.6
512.4

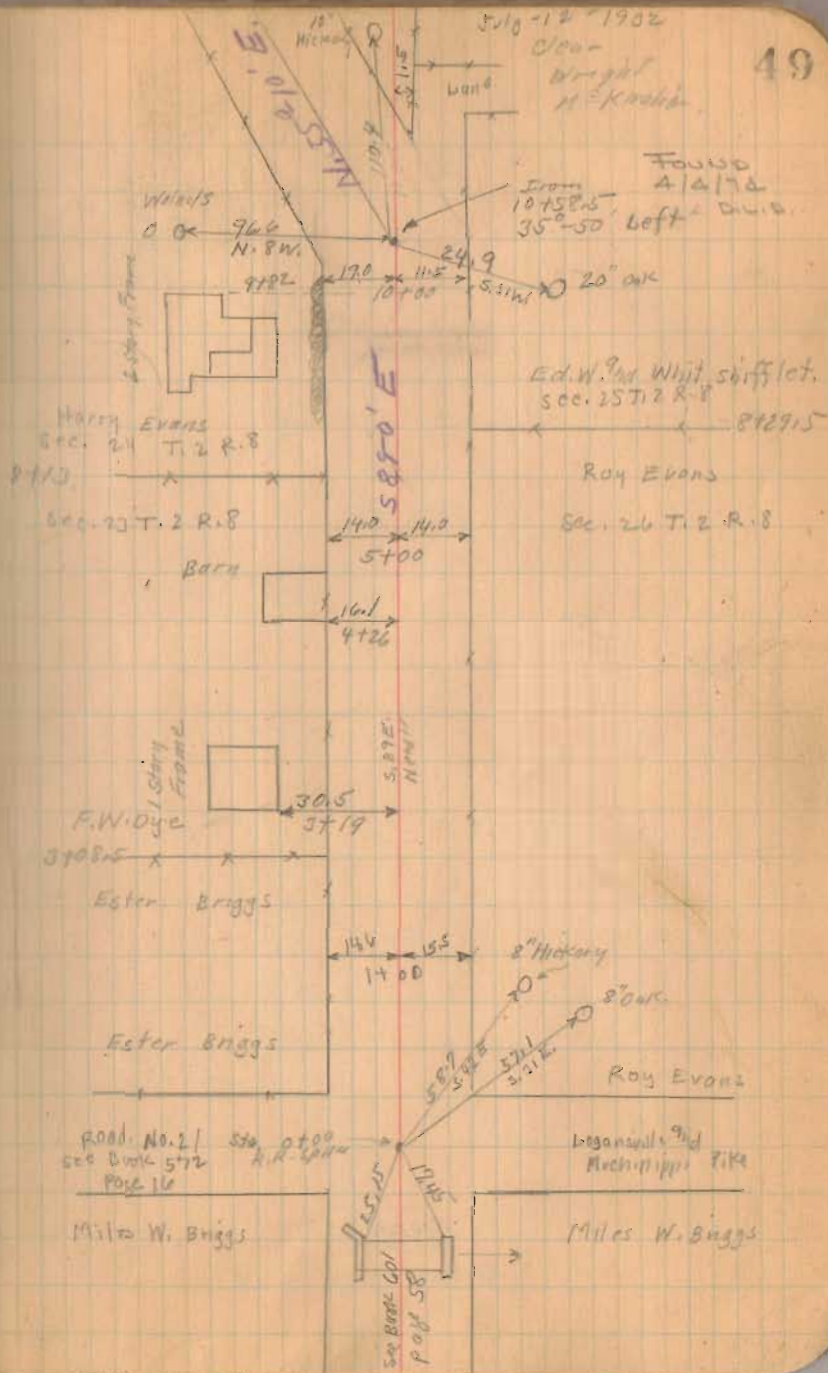
Road No. 59
Loomfield Twp

66 1835 Commissioners Journal Vol. 4 Page 160

Stakes placed 20' from & for 40' road.
Stakes 1-3-5-7-9 etc.

1408
INDEXED ON MAP

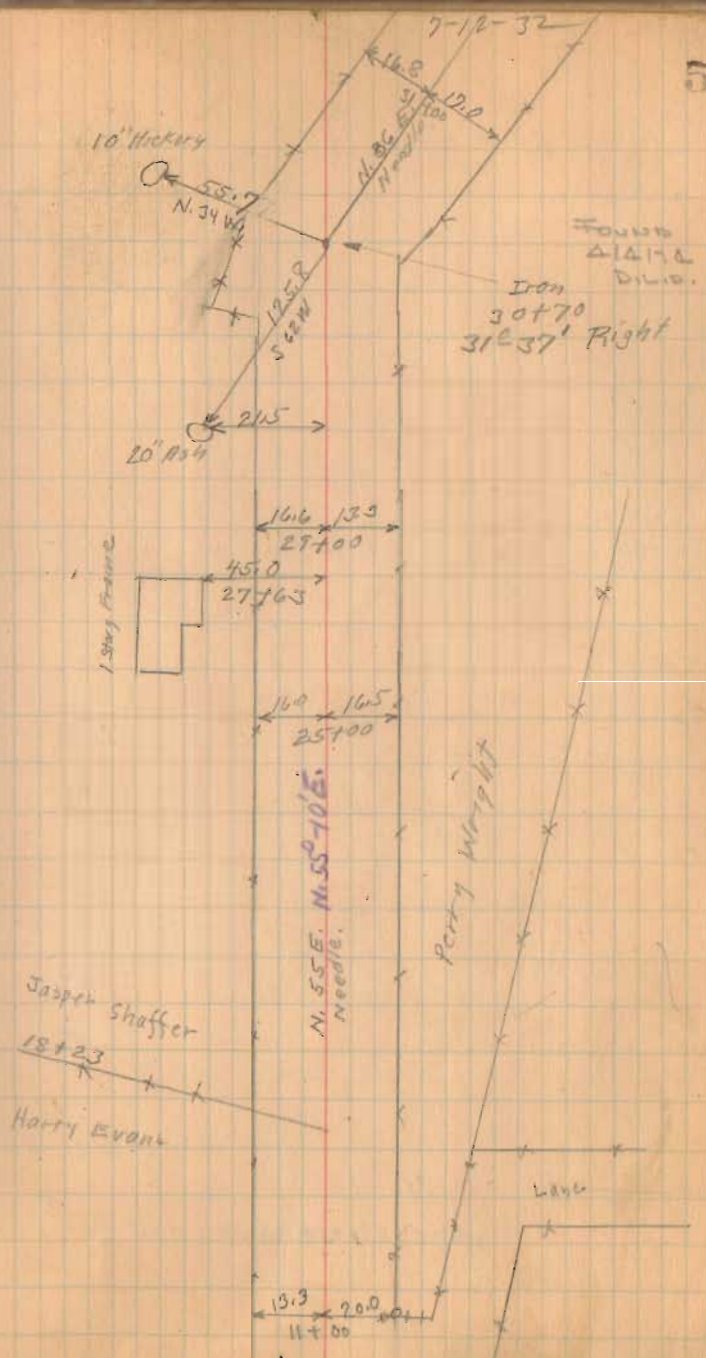
49



FB 559

Road No. 59

50



1408

INDEXED ON MAP

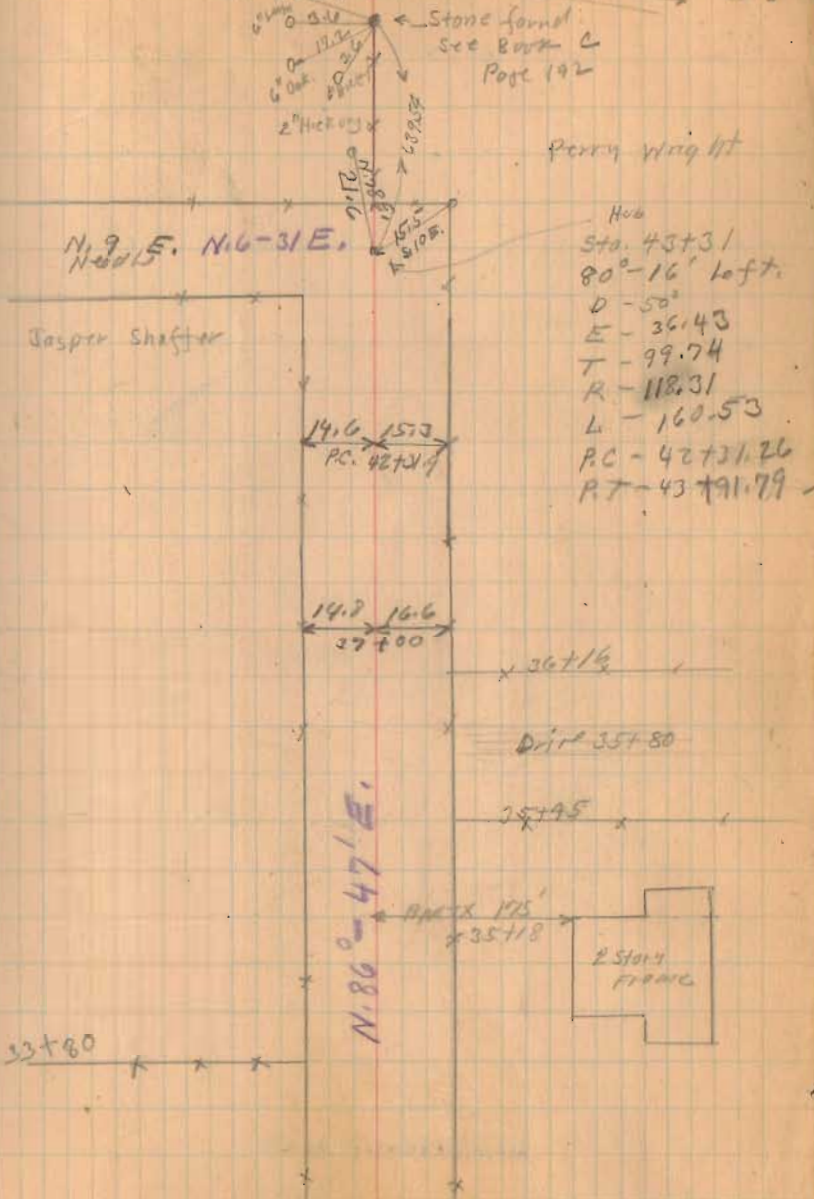
FB 559

Road No. 59

1408

INDEXED ON MAP

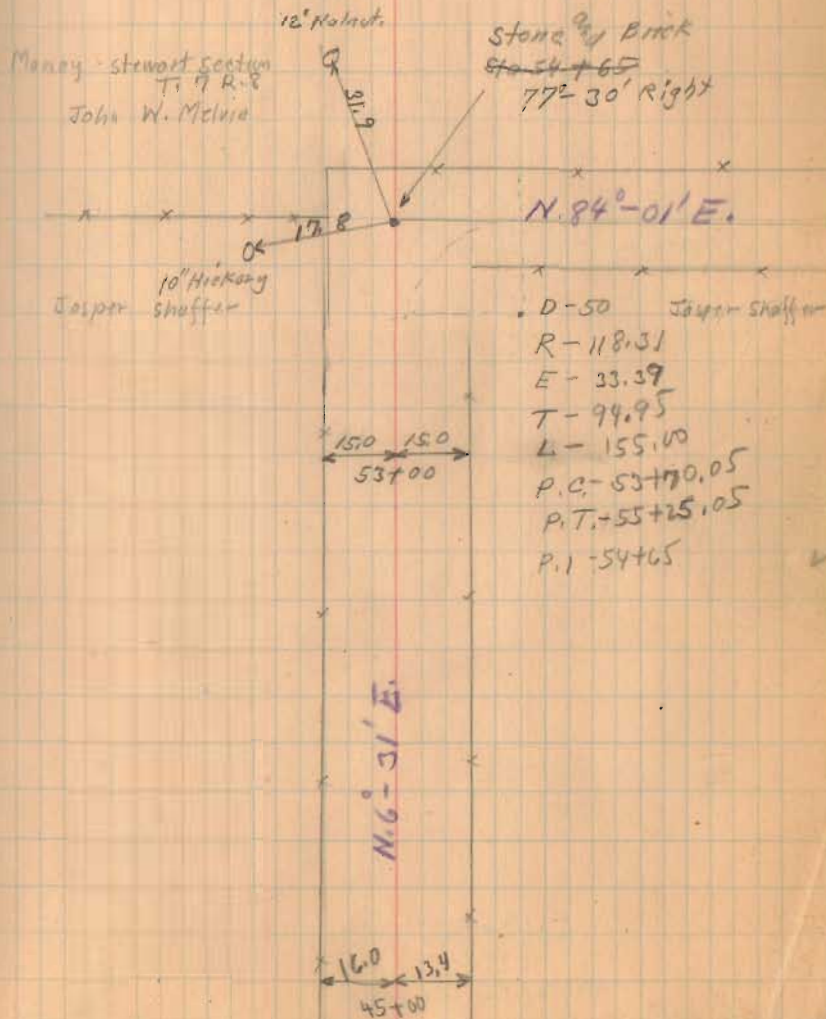
Great Miami River 7-12-32 51



Road. No. 59

1408

INDEXED ON MAP



FB 559

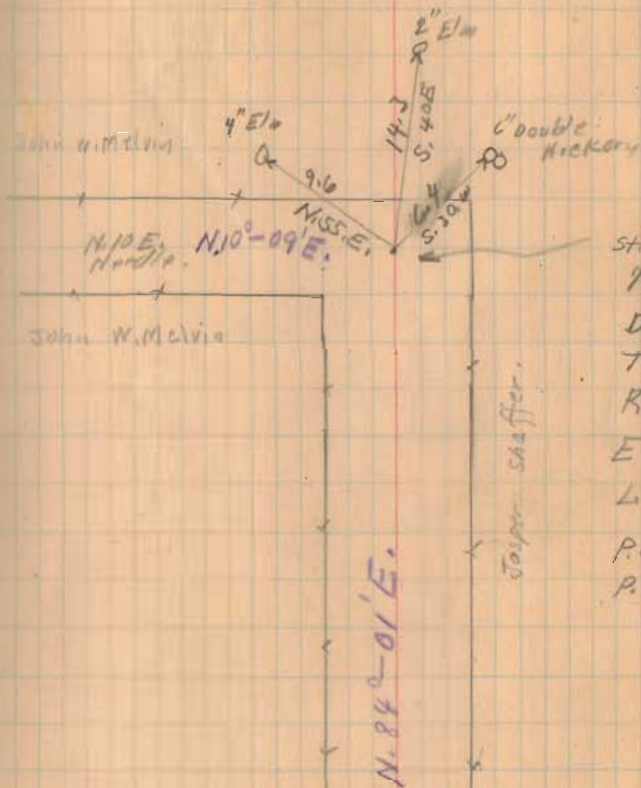
Road. 59.

50'	5°-30'
100'	11°-0'
150'	16°-30'
200'	22°-0'
250'	27°-30'
300'	33°-0'
	38°-52'
	42°-11'
	46°-56'

(1408)
INDEXED ON MAP

July-13-1932
Dear
Wright
McKinnon

53



Hob.
Sta. 4136
93°-52' Left.
D. -22°
T. 196.98
R. 262.04
E. 65.78
L. 335.75
P.C. 59+59.02
P.T. 62+94.77

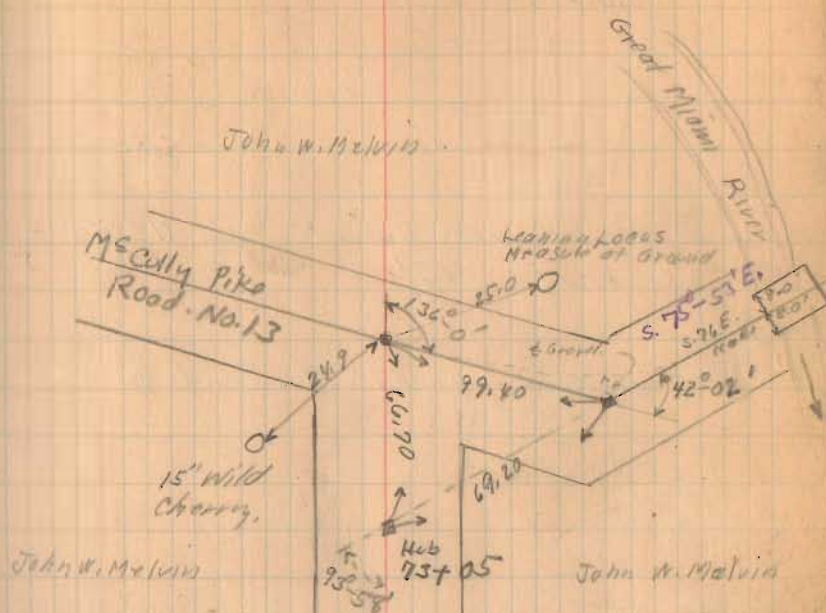
FB 559

Road 59

Total Length (To Pit) 7366. Feet
 " " " " 1.3951 Miles

(1408)
 INDEXED ON MAP

54



P.I. 73+05
 Δ 93°-58'
 D 50°
 R. 118.31
 T. 126.79
 L 187.93
 E. 55.10
 P.C. 71+78.21
 P.T. 73+66.14

FB 713

T.R. 59
Bloomfield Twp.
Logan Co., Ohio

30+69.86 - P.I. - Fd. 5/8" dia.

iron bar \approx 14" deep -

Ref: F.B.K. # 559, pg. 50 -

31°-35'-38" Rt.

10+58.29 - P.I. - Fd. 1" dia. iron

bar \approx 12" deep - Ref: F.B.K. #

559, pg. 49

35°-49'-46" Lt.

0+00 - P.I. - Fd. 1" dia iron bar \approx

14" deep - $\&$ intersection

T.R. 59 w/ C.R. 21 - Ref:

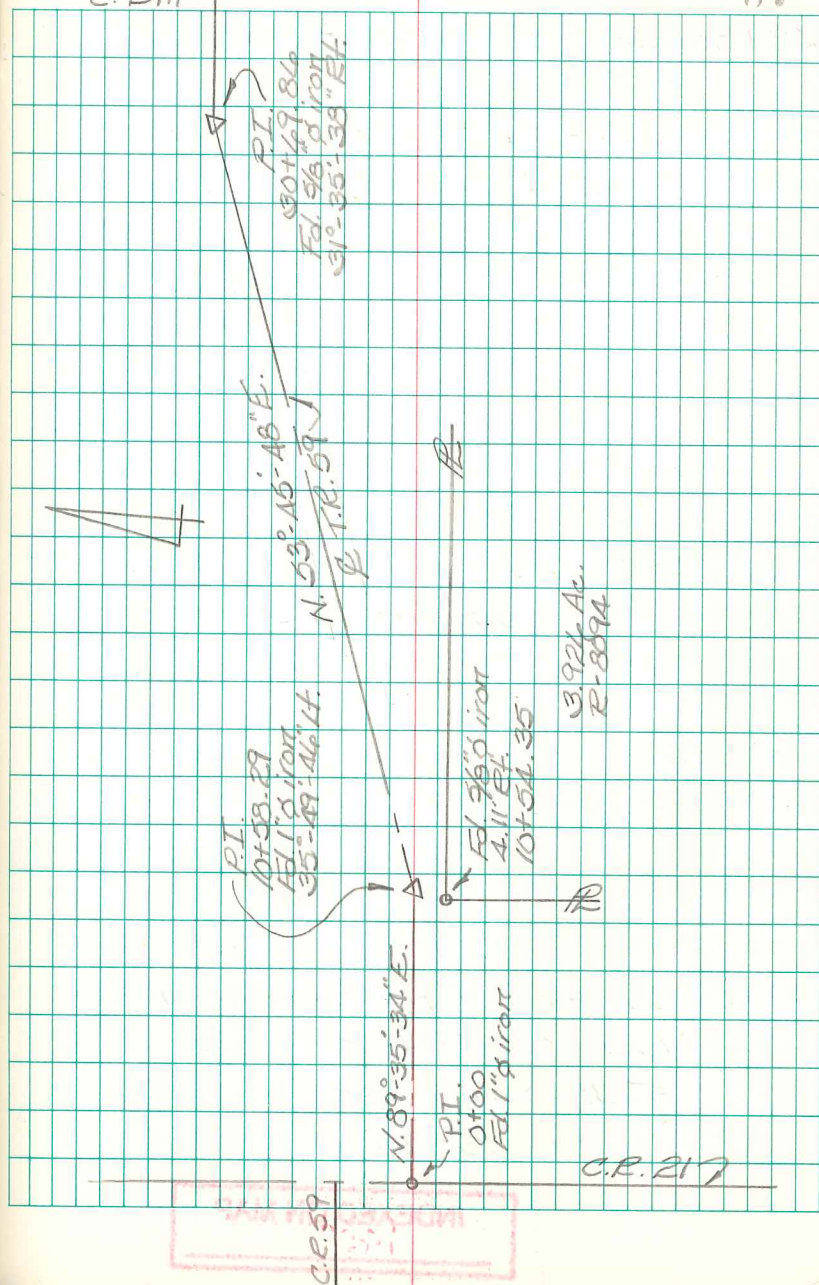
F.B.K. # 559, pg. 49 - Start

of this survey.

B. Simmons
G. Dappert
C. Dill

April 2014

37



FB 713

T.R. 59
Bloomfield Twp.
Logan Co., Ohio

43+96.40 - P.T. - Set R.R. Spike

43+30.44 - P.I. - Set $\frac{3}{8}$ " dia.
capped rebar - searched
for hub but no luck - Set
rebar as per Trout Survey
(Bk. C, pg. 192) & Road notes
in F.BK. #559, pgs. 50 & 51.
80°-18'-15" Lt.

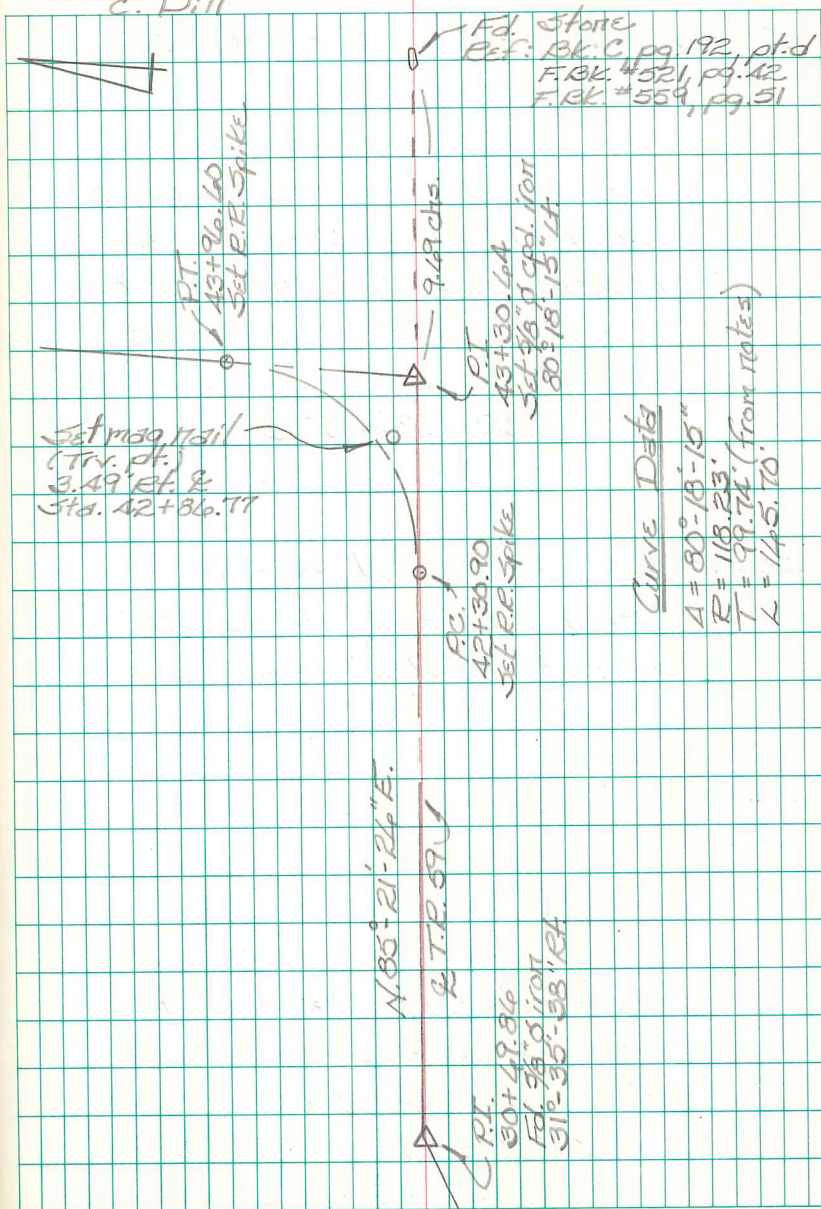
42+30.90 - P.C. - Set R.R. Spike -
(held tangent distances
shown in F.BK. #559, pg. 51)

30+69.86 - P.I. - Fd. $\frac{3}{8}$ " dia. iron
bar \approx 14" deep - Ref:
F.BK. 559, pg. 50
31°-35'-33" Rt.

INDEXED ON MAP
1408

B. Simmons
G. Dappert
C. Pili

April 2014 38



FB 713

T.R. 59
Bloomfield Twp.
Logan Co., Ohio

55+34.24 - P.T. - Set $\frac{3}{8}$ " x 8"
carriage bolt w/ $1\frac{1}{4}$ " dia. head.

54+69.33 - P.I. - Fd. stone w/ brick
(circa 1993 Brg. 13-1.58 site
survey) - Set 10" long section
of 1" I.D. capped pipe over
stone to surface. Ref:
F.Bk. # 559, pg. 52
 $77^{\circ}-57'-29"$ Rt.

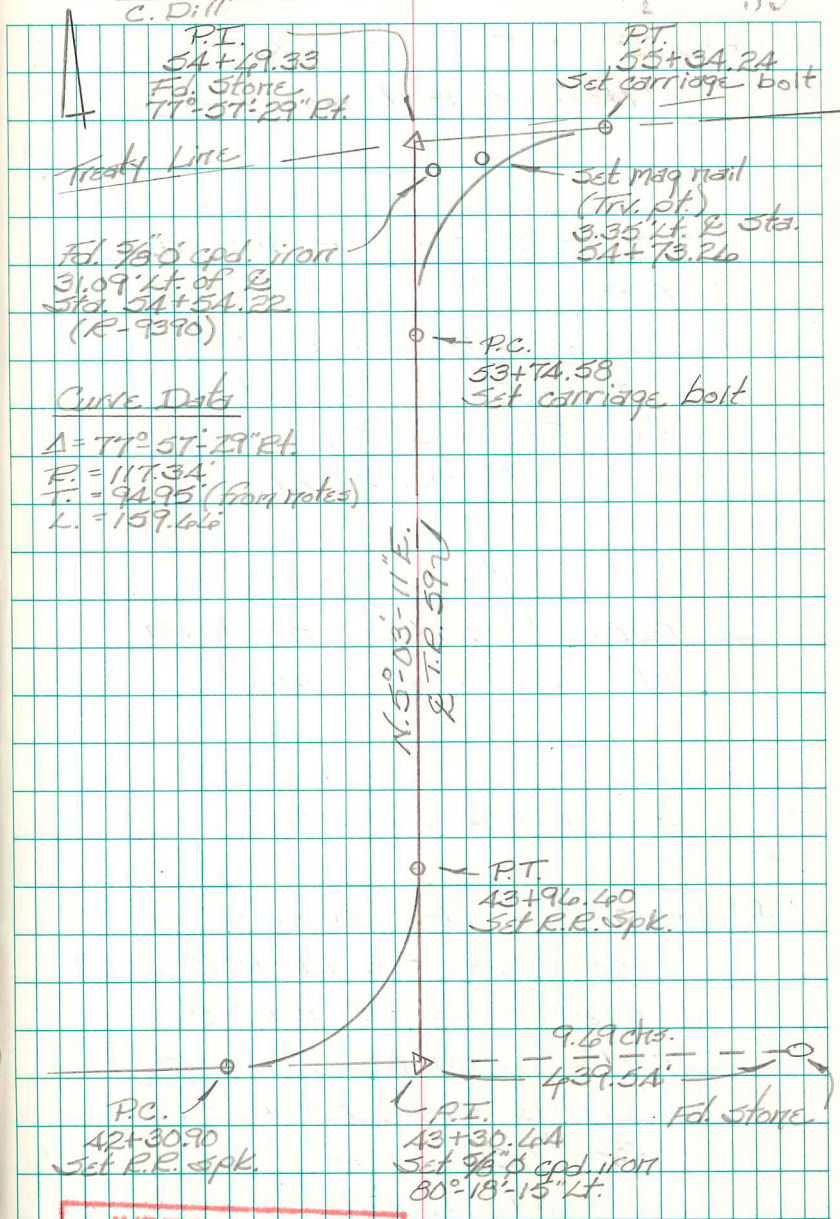
53+74.58 - P.C. - Set $\frac{3}{8}$ " x 8"
carriage bolt w/ $1\frac{1}{4}$ " dia. head -
held tangent distances
shown in F.Bk. # 559, pg. 52

43+96.60 - P.T. - Set R.R. Spike

43+30.64 - P.I. - Set $\frac{3}{8}$ " dia.
capped rebar - searched
for hub but no luck - Set
rebar as per Trout Survey
(Bk. C, pg. 192) & road notes
in F.Bk. # 559, pgs. 50 & 51.
 $80^{\circ}-18'-15"$ Lt.

B. Simmons
G. Dappert
C. Dill

April 2014



INDEXED ON MAP
1408

FB 713

T.R. 59
Bloomfield Twp.
Logan Co. Ohio

43+05.28 - P.T. - Set $\frac{5}{8}$ " x 8"
carriage bolt w/ $1\frac{1}{4}$ " dia.
head.

41+64.57 - P.I. - Fd. $\frac{5}{8}$ " dia. capped
rebar - Fd. pos. of brick
here in 1993 & set rebar
(1993 Brq. 13-1.58 site survey)
Ref: F.Bk. # 559, pg. 53.
73°-56'-50" Lt.

59+47.59 - P.C. - Set $\frac{5}{8}$ " x 8"
bolt w/ $1\frac{1}{4}$ " dia. head - held
tangent distances shown
in F.Bk. # 559, pg. 53.

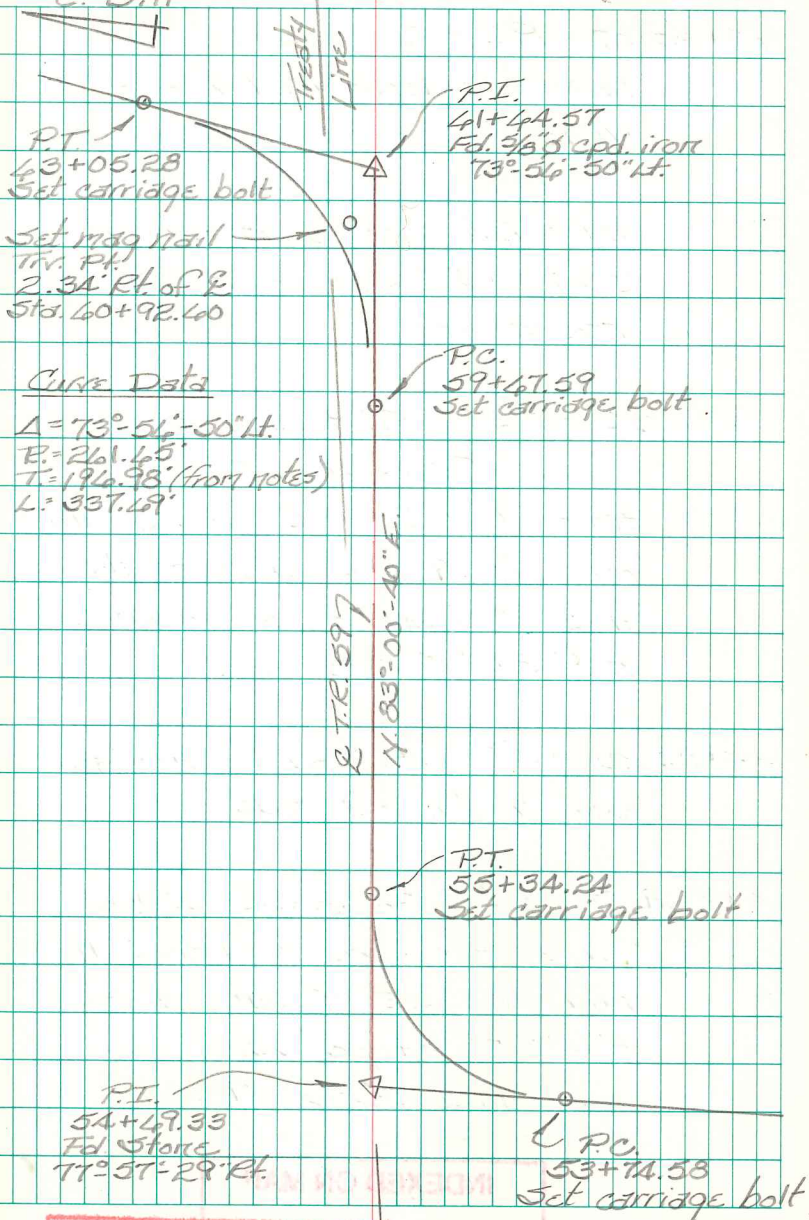
55+34.24 - P.T. - Set $\frac{5}{8}$ " x 8"
bolt w/ $1\frac{1}{4}$ " dia. head.

54+69.33 - P.I. - Fd. stone w/ brick
(circa 1993 Brq. 13-1.58 site
survey) - Set 10" long section
of 1" I.D. capped pipe over
stone to surface - Ref:
F.Bk. # 559, pg. 52
77°-57'-29" Rt.

B. Simmons
G. Dappert
C. Dill

April 2014

40



Curve Data
 $\Delta = 73^\circ-56'-50"$ Lt.
 $R = 261.45'$
 $T = 196.98'$ (from notes)
 $L = 337.69'$

INDEXED ON MAP
140B

FB 713

T.R. 59
Bloomfield Twp.
Logan Co., Ohio

73+82.07 - P.I. - Fd. $\frac{5}{8}$ " dia. capped
rebar - Intersection \perp C.R. 13
w/ \perp T.R. 59 - Fd. a hub here in
1993 & set rebar through hub
(1993 Brq. 13-1.58 site survey) -
Ref: F.B.K. # 598, pg. 59 - End of
this survey.

73+15.54 - P.O.T. - Fd. $\frac{5}{8}$ " dia. capped
rebar - Intersection C.R. 13
tangent w/ \perp T.R. 59 - Fd. a hub
here in 1993 & set rebar through
hub (1993 Brq. 13-1.58 site survey) -
Ref: F.B.K. # 598, pg. 59.

43+05.28 - P.T. - Set $\frac{5}{8}$ " x 8" carriage
bolt w/ 1 $\frac{1}{4}$ " dia. head

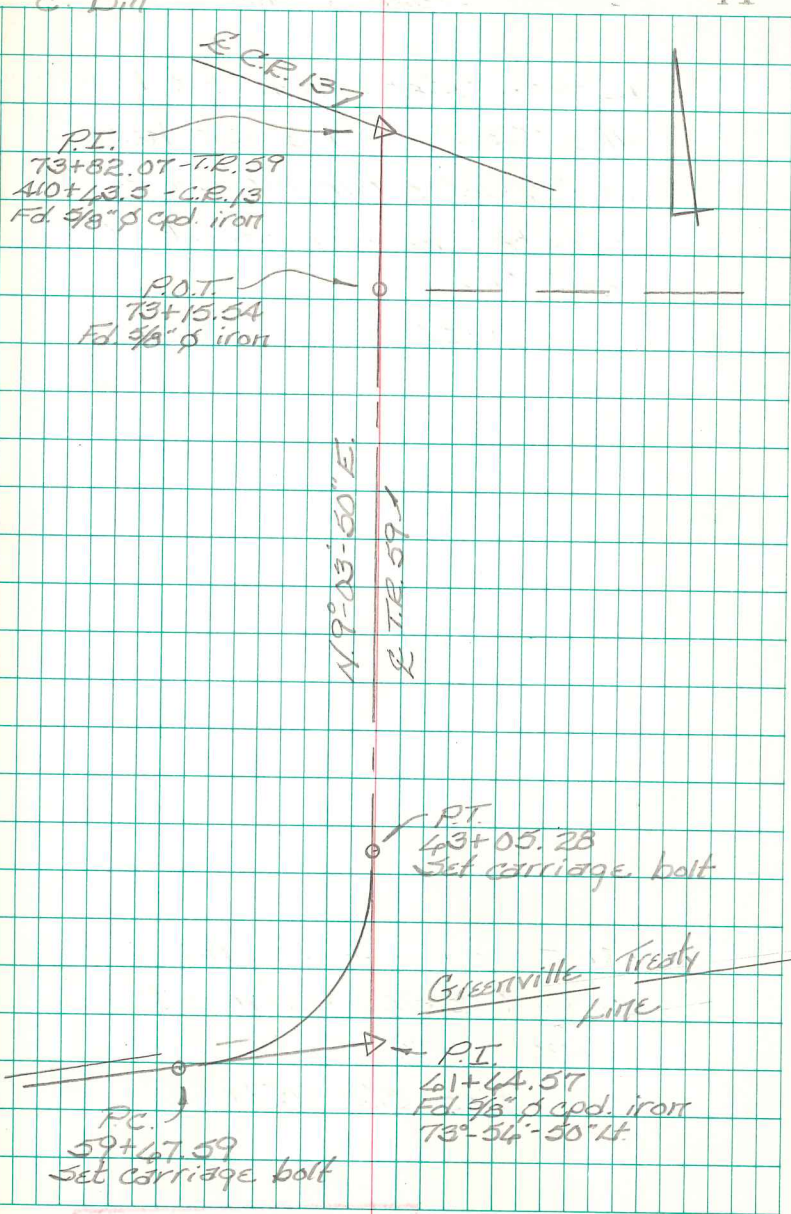
41+44.57 - P.I. - Fd. $\frac{5}{8}$ " dia. capped
rebar - Fd. pcs. of brick here
in 1993 & set rebar - Ref:
F.B.K. # 559, pg. 53
73°-54'-50" Lt.

INDEXED ON MAP
1408

B. Simmons
G. Dappert
C. Dill

April 2014

41



INDEXED ON MAP