

Anderson-Bell Pike

as given by Co. Line Survey. 1884.

N. 1/4 W.	824
N. 1/2 W.	412
N. 1/4 W.	206
N. 1/4 W.	206

Sec. line between

Sec. 16 & 17

Blaring

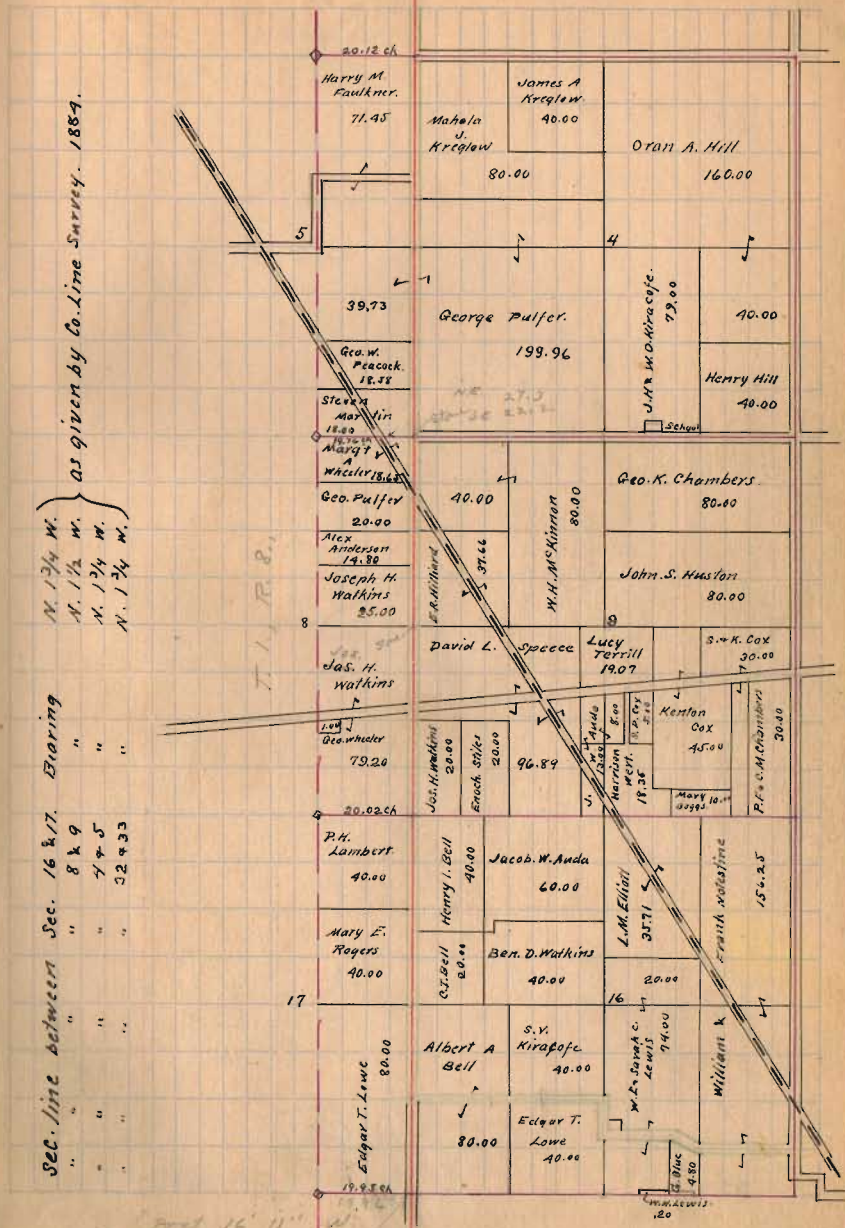
8 & 9

7 & 5

32433

1584

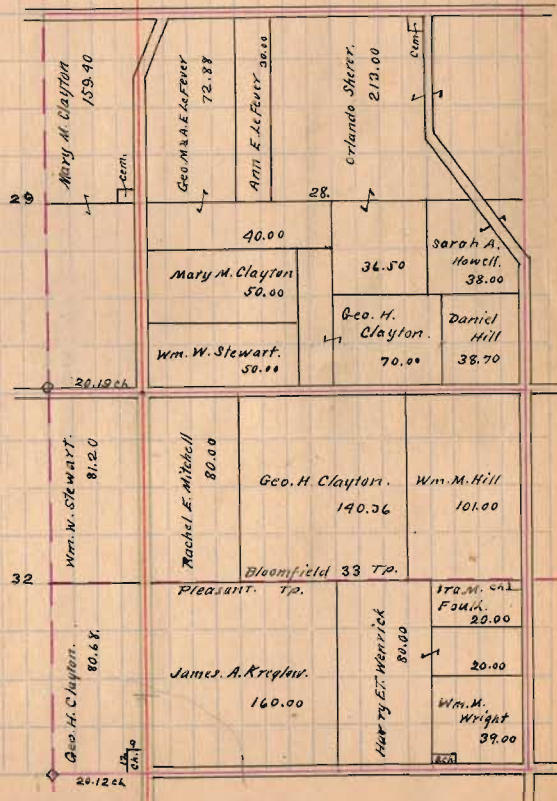
(INDEXED ON MAP)



T. R. B.

Monday 28-29-32-33

Amount Paid W.D. 27-11
Ch. S.E. 24-7



1584

INDEXED ON MAP