

Road. 13

50 & (75') McColly Pike

Free Pike record No 4 Page 152

1875

(75' - sta 48+98 To 51+62)

60' Sta. 444+13 To 483+99 Commissioners

Journal No. 5 Page 183 (1837)

staked for 60' R/W. - 11/7/39

stakes for 50' Road

(13+00) Monuments (Hubs set)

(10+00) Monuments - (Hubs set)

(6+00) Monuments (Hubs set)

(1+50) Monuments Hubs set

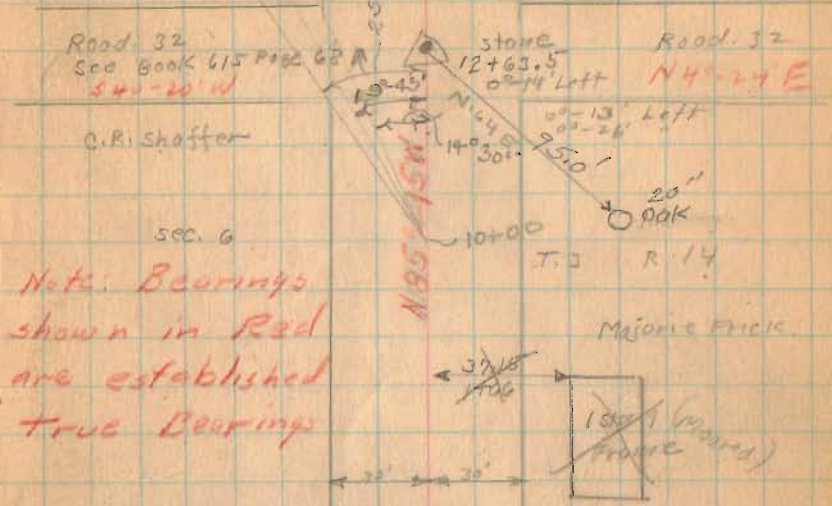
Em bankment 13+00 to 15+00

1727

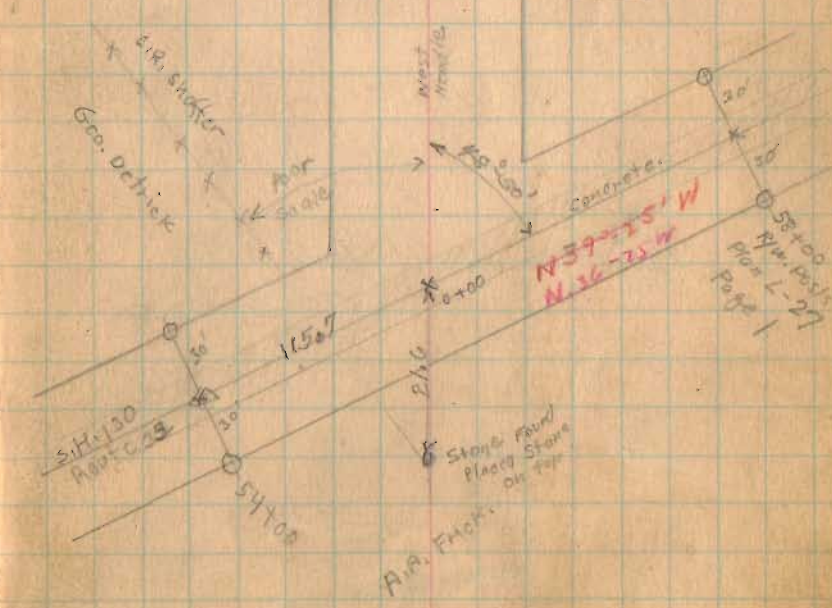
INDEXED ON MAP

Re staked
11/7/39
E. Gore
G. W. Lyle
J. Buckner
M. V. Jones
R. Reed

July-8-1936
Clear-Dry-Warm
F. Wing 17
J.M.
T.3 R.14
J. Loc McCormick



Bridge 40+33-16.9



11/7/39
Restaking

Road 13

(24+00) Monuments (Hubs Set)

(22+00) Monuments - (Hubs Set)

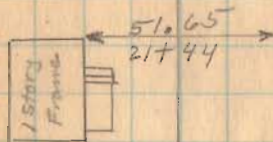
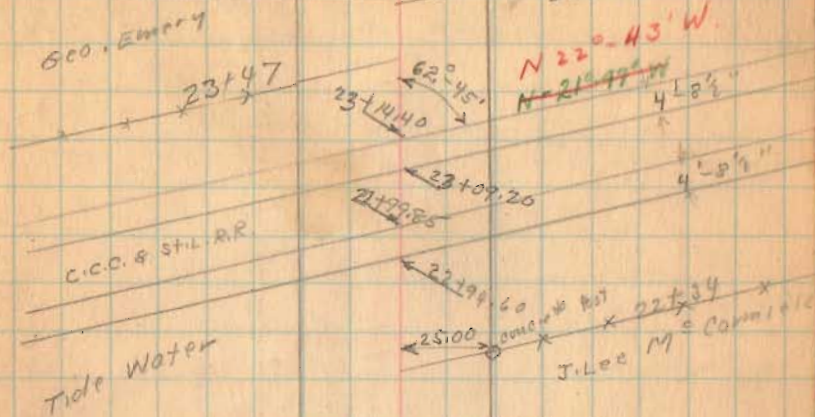
(1727)

(18+00)

INDEXED ON MAP
Monuments - (Hubs Set)

7-8-36

Harry Costin 39



N 65° 18' W

11/8/39 Restaked

E. Cory
G. Wilkes
J. Inskeep
M. Jants
R. Reed

Road 13

60' wide

95+00 Monuments (Hubs set)

90+00 Monuments (Hubs set)

84+00 Monuments (Hubs set)

78+00 Monuments (Hubs set)

74+00 Monuments (Hubs set)

INDEXED MAP
INDEXED ON MAP

1727

✓

July-9-1936
Warm Yes
Clear 42
F. Wright
G. Wilkes
J. Montgomery

E. Z. Kauffman
concrete
post
A. Mark

N. 99+00 W
N. 84+50 W

Stone Found. Lester Marshall
93+58
02+00
left

100.00
N 22 E
92+95
Brick School

91+54
J.H. Hill

90+74.0
R.P. Spike
No angle

83+42.6
83+41

Land To Mark Bldgs.

83+16

N. 83+57 W
N. 83+57 W

70.00
82+88
2 story frame

80+42
Land To Payoff Hill
80+04

N. 50+00 W
N. 50+00 W

Road 13

11-9-39 Restaked

B. Wiggins
C. Kopper
B. Fiske
M. Jones
R. Reed

120+00 Monuments (Hub set)

115+00 Monuments (Hub set)

110+00 Monuments (Hub set)

106+00 Monuments (Hub set)

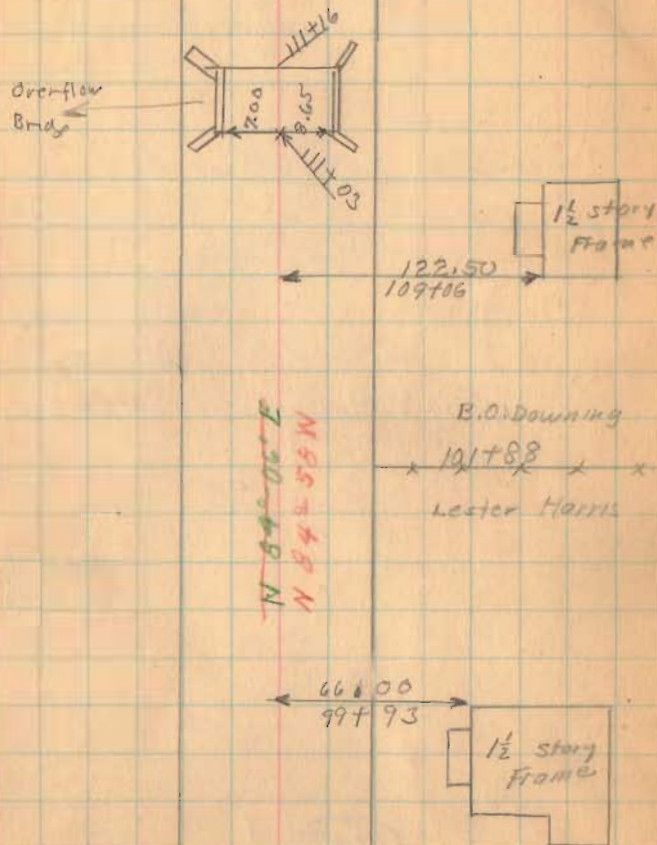
101+00 Monuments (Hub set)

1727

INDEXED ON MAP

7-9-36

43



11-7-39 clear
not cold

Road 13

131+50 Monuments (Hub set)

126+00 Monuments (Hub set)

121+00 Monuments (Hub set)

1727

INDEXED ON MAP

7-7-36 44

7
S 4°-20' W
S 20° W Road 46
see Book 587 Page 14
L
Road 235
Placed Iron
130+95
No. Angle
Fd 12/19/65

sec. 24

T. 3 R. 14

John Lynn
R
Huro

Iron
120+48
1° 10' 4" off
15' 27" W

John Lynn

E. Z. Kauffman

Road No. 46

30° Rod
5600
28130
S. 32° W. Fd 12/19/65
Cement
Post

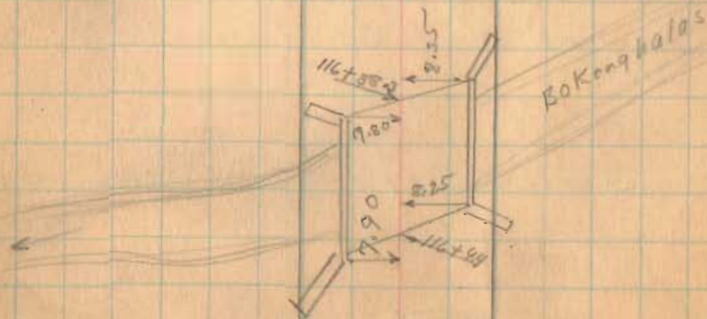
B. O. Downing

sec. 18

T. 3 R. 14

N 88°-06' W
N 89°-38' W

→ 2



11-9-39

Wilgus
Keyser
Restaked Inskip
Jones

Road 13

153+00 Monuments (Hubs set)

147+50 Monuments (Hubs set)

149+00 Monuments (Hubs set)

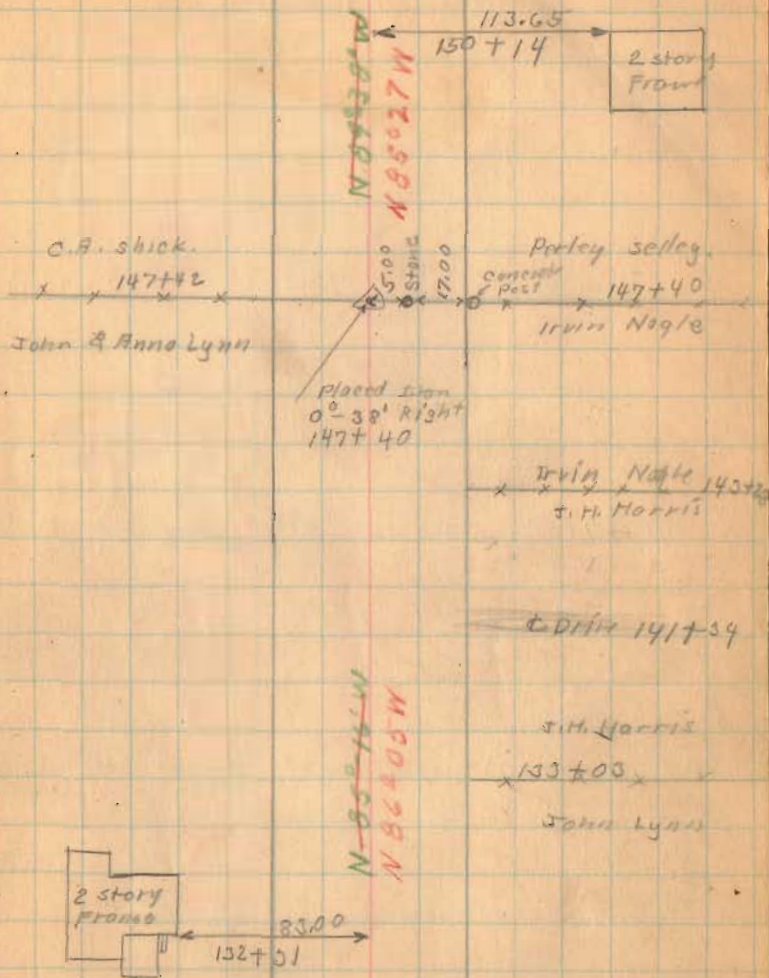
141+00 Monuments (Hubs set)

136+00 Monuments (Hubs set)

INDEXED ON MAP
1727

7-9-36

45



11-10-39
very Windy

G.W. Hubs
C. Keyser
J. Instep
M. Jones

Road 13

7-9-36

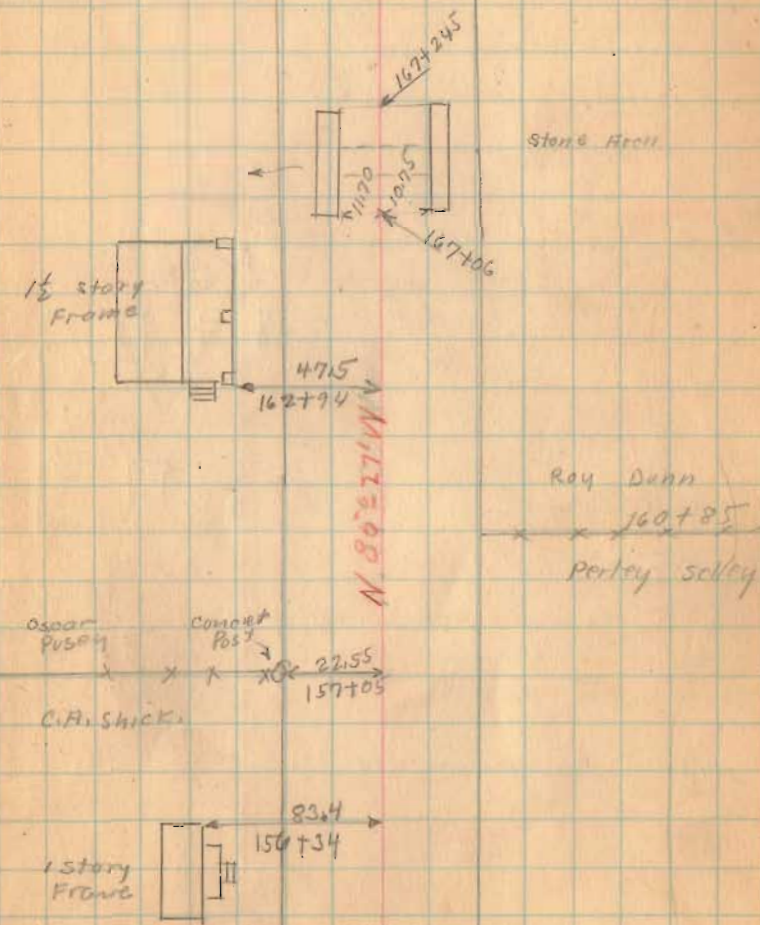
46

(167+00) Monuments (Hubs set)

(162+00) Monuments (Hubs set)

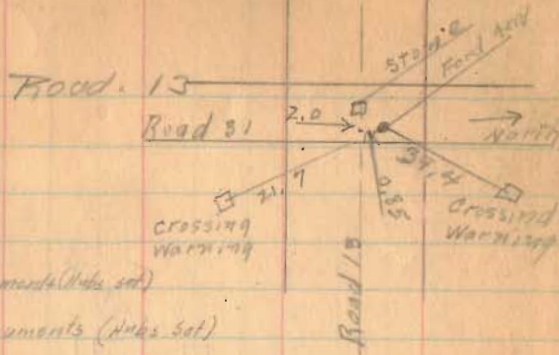
(157+00) Monuments (Hubs set)

(1927)
INDEXED ON MAP



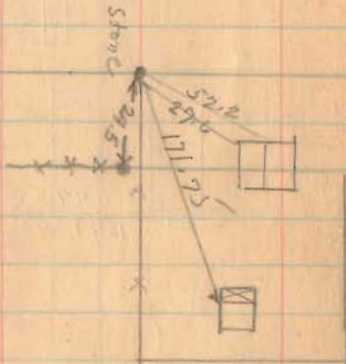
July - 10 - 1936
 Clark - Mot.
 F. Wright
 J. Montgomery
 G. Wilgus

47



186+00 Monuments (Hubb set)

180+00 Monuments (Hubb set)



175+00 Monuments (Hubb set)

Monument - N. side road at 90°
 set by eye.

173+00 Monuments (Hubb set)

Sargent

Oscar Pusoy

1727

INDEXED ON MAP

Sec. 30

Robert Bradley

T. 3 R. 14

Mary E. Moore

174+48

Road 31
 540-19' W

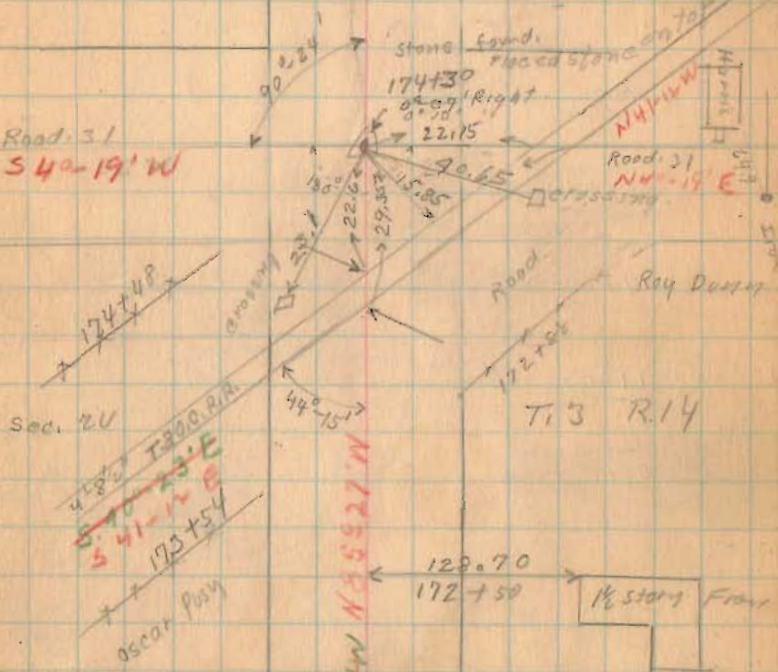
Sec. 20

482 T300.00
 570-23'E
 541-12'E
 170+54

Oscar Pusoy

N 65 27' W

N 45 27' W



Road 13

11/14/39
Rechecked - 60'
E.K. Coyne
G.W. Wilgus
H.E. Jones
C.B. Kesson
R. Root

214+00 Monuments - (Hubs Set)

209+00 Found 5-9-53 Monuments (Hubs set)

204+00 Found 5-9-53 Monuments (Hubs set)

201+00 Found 5-9-53 Monument - (Hubs Set)

200+00 Monuments - (Hubs Set)

195+00 Monuments (Hubs Set)

191+00 Monuments (Hubs set)

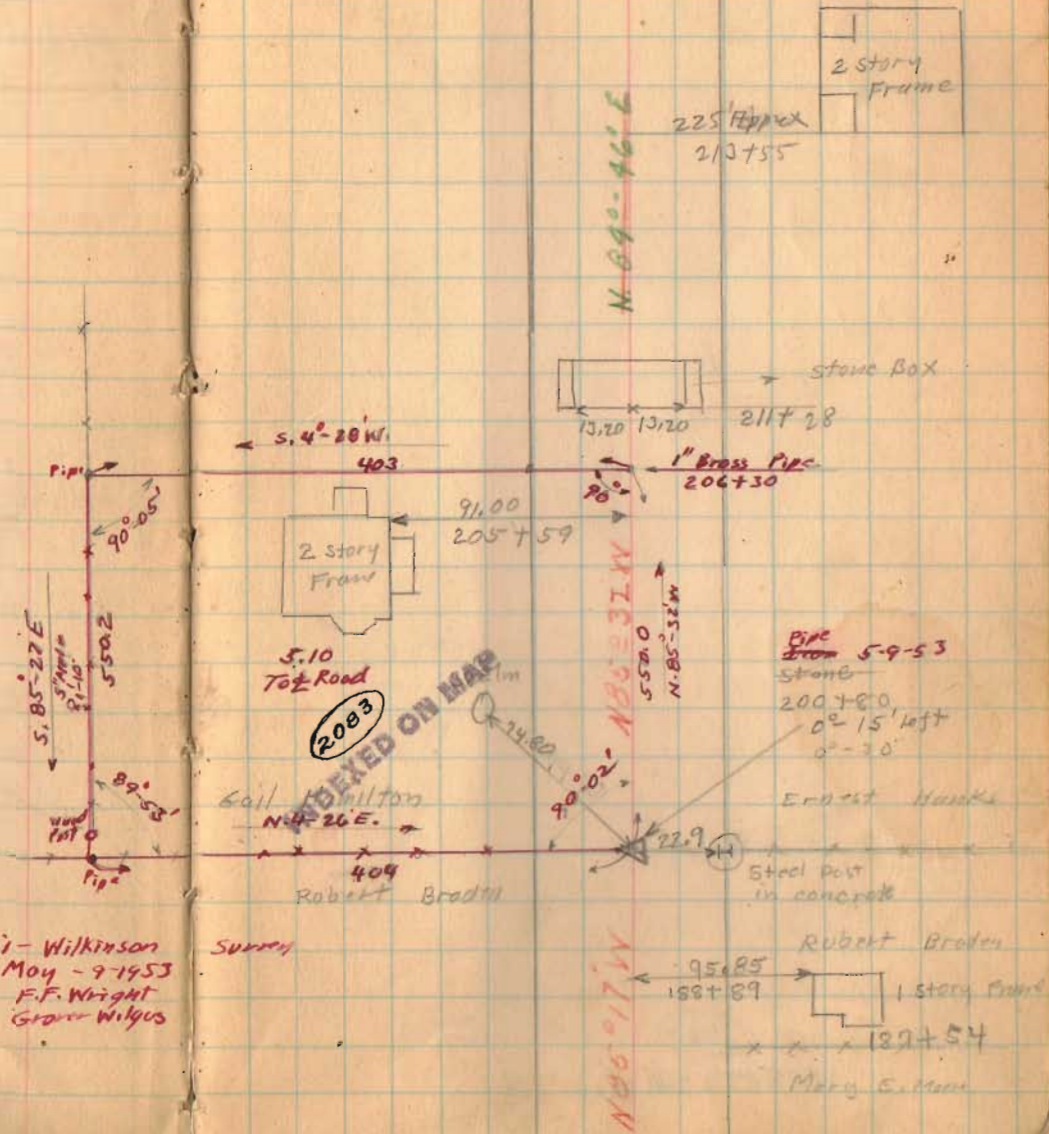
INDEXED ON MAP
1727

Arni - Wilkinson
May - 9-1953
F.F. Wright
G.W. Wilgus

Surrey

7-10-34

48



Road 13

(219+00) Monuments (Hubs Set)

(1722)

INDEXED ON MAP

9-10-36

49

✓
Z x 217+50 x
Lane
Z 217+34 x

N 77° 49' W
~~N 77° 49' W~~
N 85° 31' W

Lawrence Milligan

Lane

217+67

Ernest Hanks

11/14/39
 Restaked 60'
 Cox
 Wilgus
 Keyser
 Jones
 Reed.

Road. 13

246+00 Monuments (Hubs Set)

241+50 Monuments (Hubs Set)

240+75 Monuments (Hubs Set)

237+00 Monuments (Hubs Set)

233+00 Monuments (Hubs Set)

228+00 Monuments (Hubs Set)

227+00 Monuments (Hubs Set)

224+00 Monuments (Hubs Set)

1927

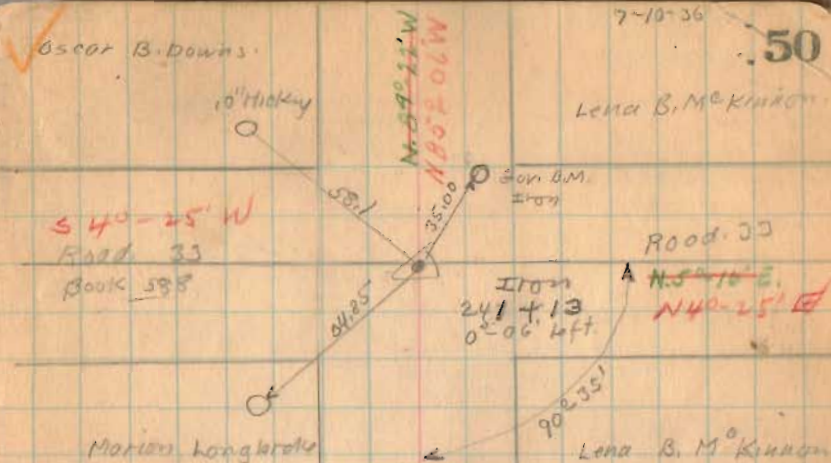
INDEXED ON MAP

✓ Oscar B. Downs.

7-10-36

50

Lena B. McKinnon



Washington
 sec. 30

Township 2
 T. 3 R. 14

Marion Longbrake

Iron 227+60
 0°-32' Right Lena B. McKinnon

x x x
 Gail Hamilton
 sec. 30

28.00
 N 55° E
 56" Elm
 Lawrence Milligan
 T. 3 R. 14

Harrison

Township

N 85° 20' W
 N 85° 16' W
 N 85° 15' E
 N 40° 25' E

Food. 13

269+00 Monuments (Hubs Set)

265+00 Monuments (Hubs Set)

260+00 Monuments (Hubs Set)

255+00 Monuments (Hubs set)

250+00 Monuments (Hubs Set)

INDEXED ON MAP

INDEXED (1727) MAP

INDEXED ON MAP

✓ Everett Knowlton

268+30

Kreglow

7-10-36

E. B. Roock

51

268+30

268+20 of Drive



Storage Box

263+00

Noah H. Coover

262+12

Leola B.M. Kinnear



52.25

258+77

N 85° 26' W
N 85° 26' W

placed Iron

254+65

0°-20' to ft.

Kreglow

Corner of
Box

19.45

Oscar B. Downs

43.50 30" dia

N. 12 E.

44.90 24" dia
N. 40 E.



57.25

246+71

N 85° 26' W
N 85° 26' W

Road 13

11/15/39
Resfaked - 60'
Care
Wilbur
Keyser
Jones
Reed

292+00 Monuments (Hubs Set)

289+00 Monuments (Hubs Set)

281+50 Monuments (Hubs Set)

278+00 Monuments (Hubs Set)

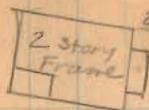
273+00 Monuments (Hubs Set)

1927

INDEXED ON MAP

7-10-36

52



292+34

N 88° 58' 00" N

← established bearing

Supt. Books

x x 289+79 x

Errett Knowlton

281+79
Plored Iron
92-02' Lift

123.8

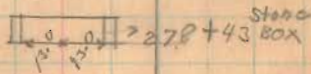
Starley Allen

20'

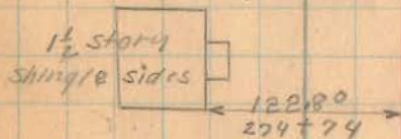
Road 214

N 4° 34' E

E. B. Rood



Stand
Box



1 1/2 story
shingle sides

122.80
274+74

N 92° 55' N
N 85° 26' W

272+79 D174

Road. 13

311+00 Monuments (Hubs Set)

308+00 Monuments (Hubs Set)

302+00 Monuments (Hubs Set)

296+00 Monuments (Hubs Set)

1727

INDEXED ON MAP

7-10-36

.53

Lawrence Milligan

Supt. Banks

Stone found.
308+38.5
No Angle

Mary C. Coover

E. & H.C. Shultz



92.00

306+96

2 story
Frame

N 85° 28' W

E. & H.C. Shultz

295+50

Starlay Alley

Road 13

330+00 Monuments (Hubs Set)

325+00 Monuments (Hubs Set)

321+00 Monuments (Hubs Set)

316+00 Monuments (Hubs Set)

1727

INDEXED ON MAP

July-13-1936

Clear - 106°

F. Wright

J. Montgomery

G. Wilgus

Joe Roberts

Max James

54

~~Dist 327+29~~



Law Margus

321+91

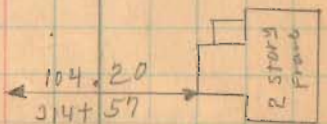
Lane

Emma S. Wilgus

M02+08N

Emma S. Wilgus
316+55

Mary C. Coover



11/15/39
Restated .60'

Road 13

346+90

344+00 Monuments (Hubs Set)

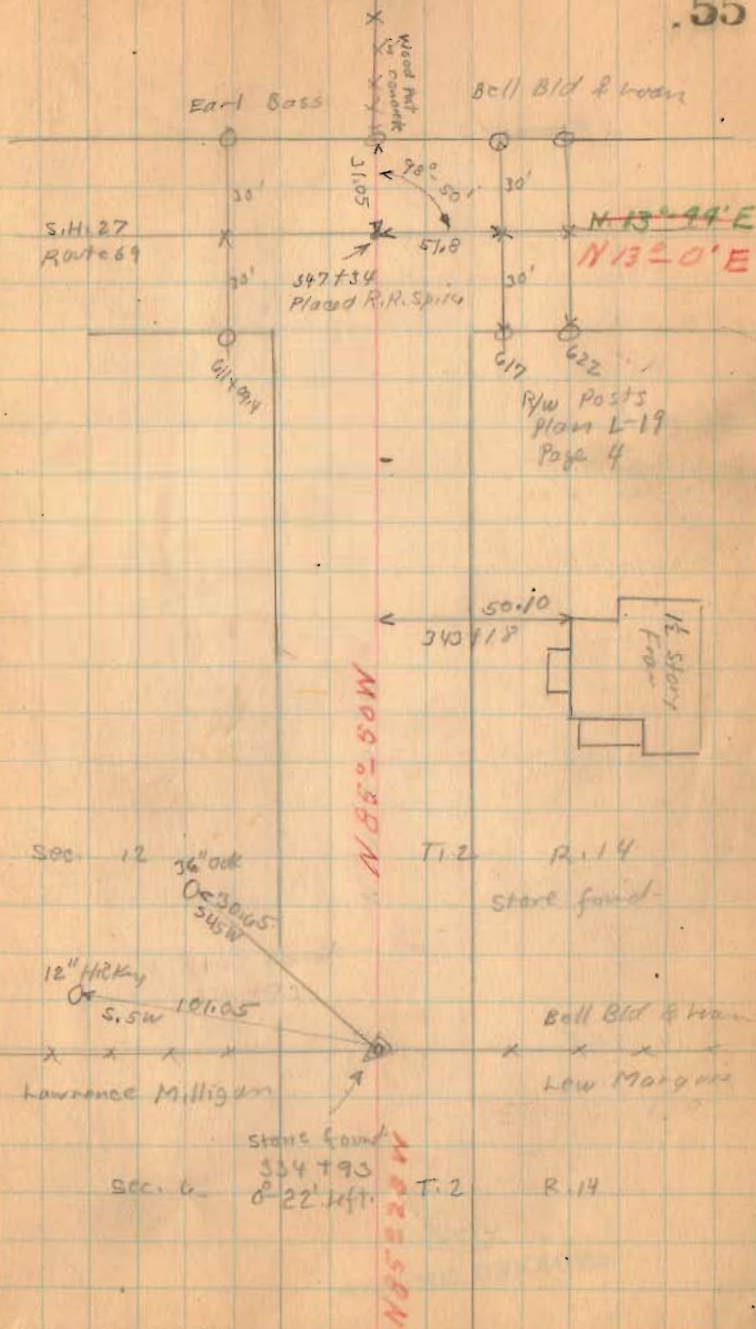
339+00 Monuments (Hubs set)

335+00 Monuments (Hubs Set)

INDEX 1722 MAP

7-15-34

55



Road 13

372+00

367+00

362+00

358+00

354+00

348+00

1727

INDEXED ON MAP

9-13-36

56

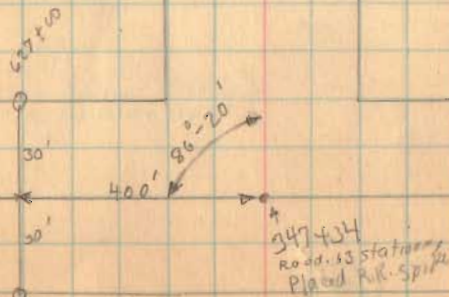
Milt McKinnon
x 360+93
Bell Bid & Loan

Milt McKinnon
x x x x
Bell Bid & Loan

12" Hickory 63.4
O ← 353+57
S.W. → H+6
No
Angle

Bell Bid & Loan

Bell Bid & Loan



Road 13

7-13-34

57

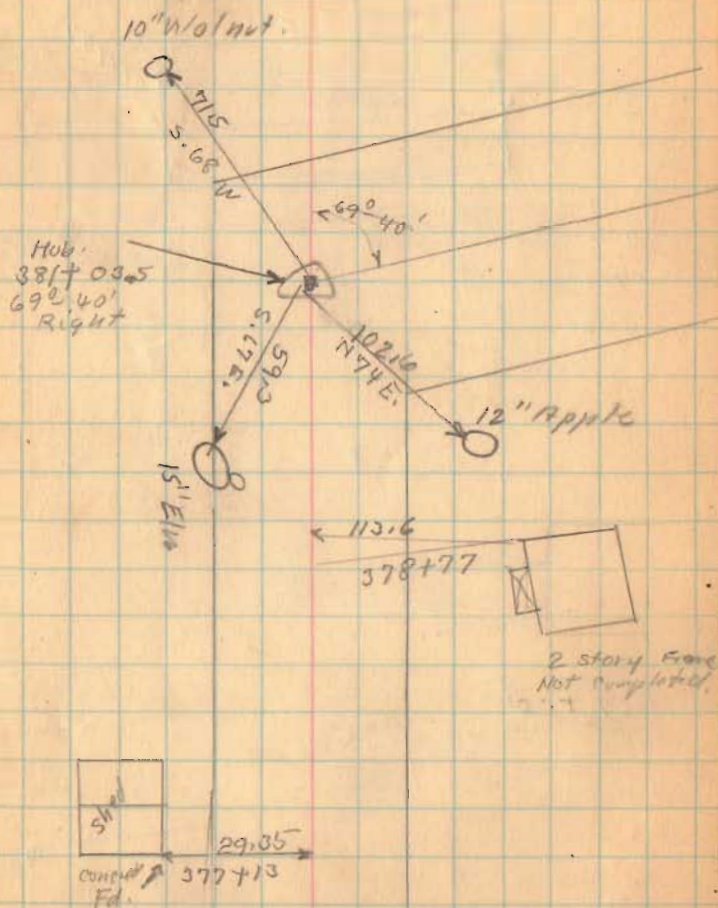
382+00

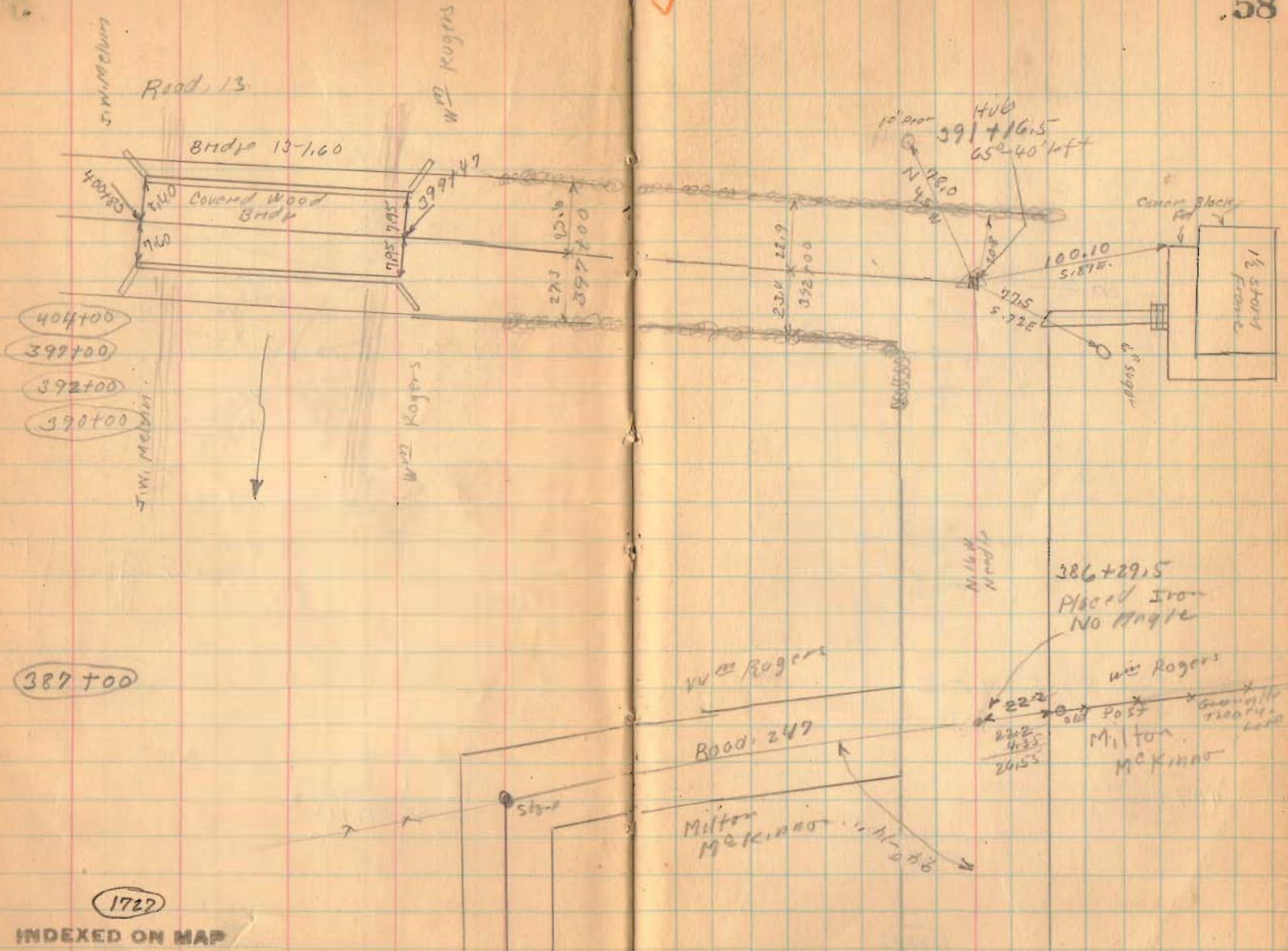
380+00

377+00

1727

INDEXED ON MAP





Road 13

Bridge 13-160

Covered Wood Bridge

Wm Rogers

Wm Rogers

Wm McKin

Wm McKin

Wm Rogers

Road 247

Milton McKinnon

Wm Rogers

Milton McKinnon

1722

INDEXED ON MAP

386+29.5
Placed Iron
No Angle

Cedar Block

1 1/2 story frame

Milton McKin

222
222
435
2455

Old Post

Survey to
Road 13
1936

10' error
HUB
391+16.5
652-40' left

N 78.0
45 W

100.10
5187E

5725
572E

6\"/>

27.7
10.6
397700

23.0
22.9
32700

404700

399700

392700

390700

387700



Road. 13

July 15 1932

Clear - 25°

F. Wright

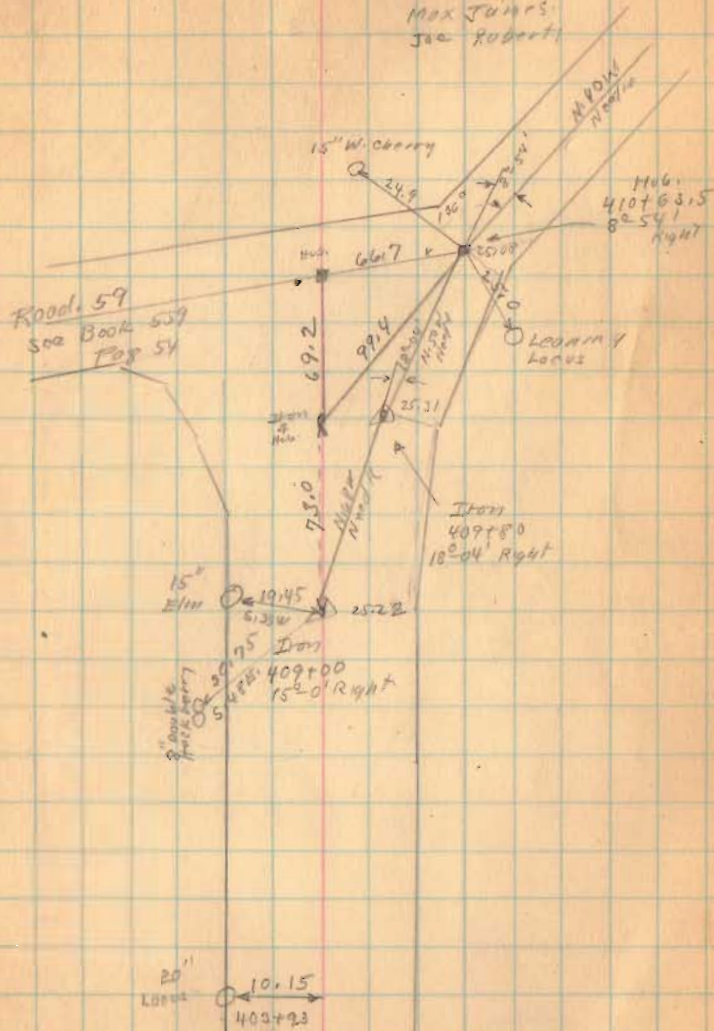
G. Wilgus

J. Montgomery

Max Jumps

Jac Roberts

59



410+63.5

409+80

Right only

409+100

1727

INDEXED ON MAP

Road, 13

420+50

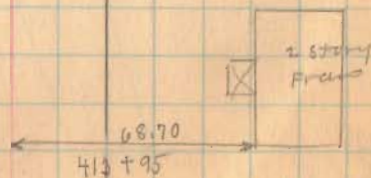
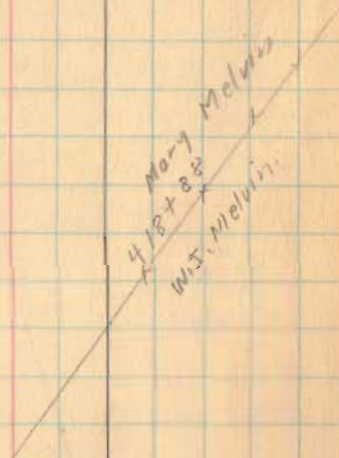
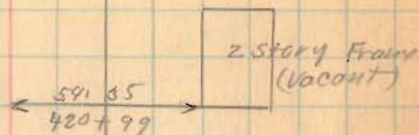
415+00

1727

INDEXED ON MAP

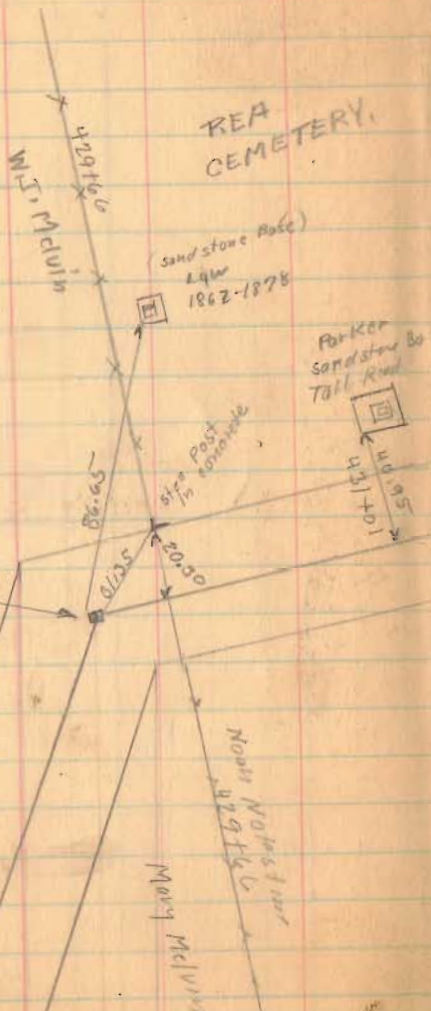
2-15-36

60



Road 13

REA CEMETERY



436+65

Hub
429+40
34'±50'
Right

430+00

429+00

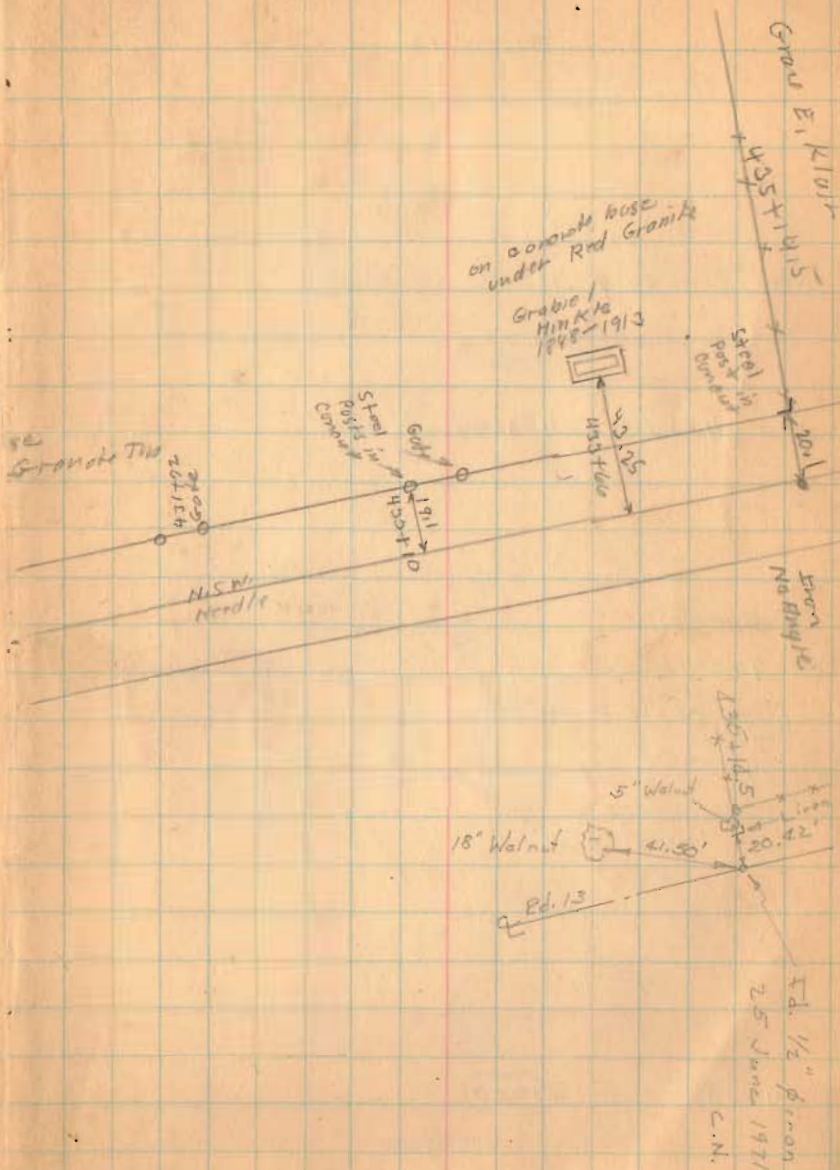
425+00

1722

INDEXED ON MAP

9-15-36

61



on coarse base
under Red Granite
Gravel
Minkie
1898-1913

Stump
Post
Concrete
Corner

SE
Granite Top
421+14
421+14
NSW
Needle

5' Walnut
18' Walnut
41.50'

Rd. 13

Ed. 1/2" piron
25 June 1971
C.N.

Road 13



469+00

461+00

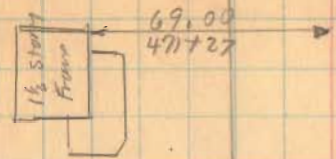
456+80

1727

INDEXED ON MAP

7-15-36

63



The Shelby Bid of Lot
Gross E. Klair

460+91
Iron
0'-04" left

W.E. & G.H. Aikin

Z - Southern L.S.

457+52
Found Not shown
James O. Ellis

