

FB 598

Road 80  
Blomfield Tap.

Stones found and witnessed  
as shown.

Not staked.

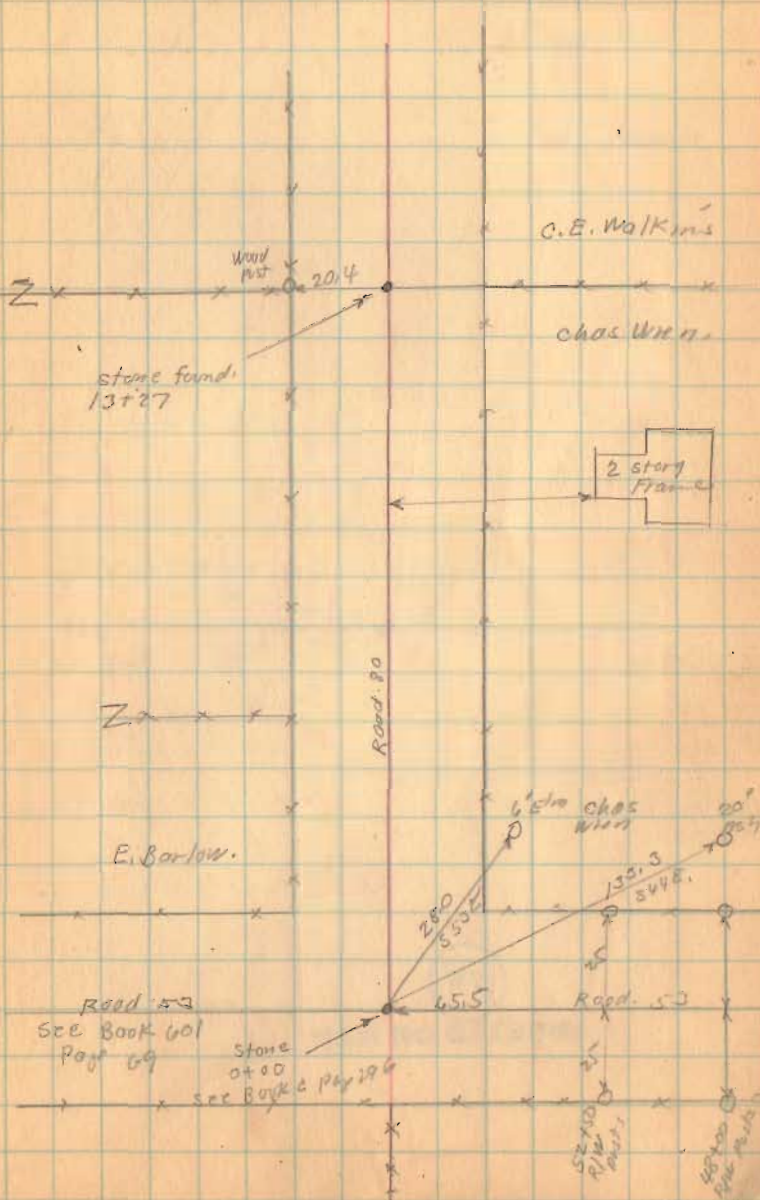
See Book C Page 296

(174)

INDEXED ON MAP

Sept. 12-1936  
Clear  
F. Wright  
G. Wilges  
Mar Jones  
Joe Roberts

177



FB 598

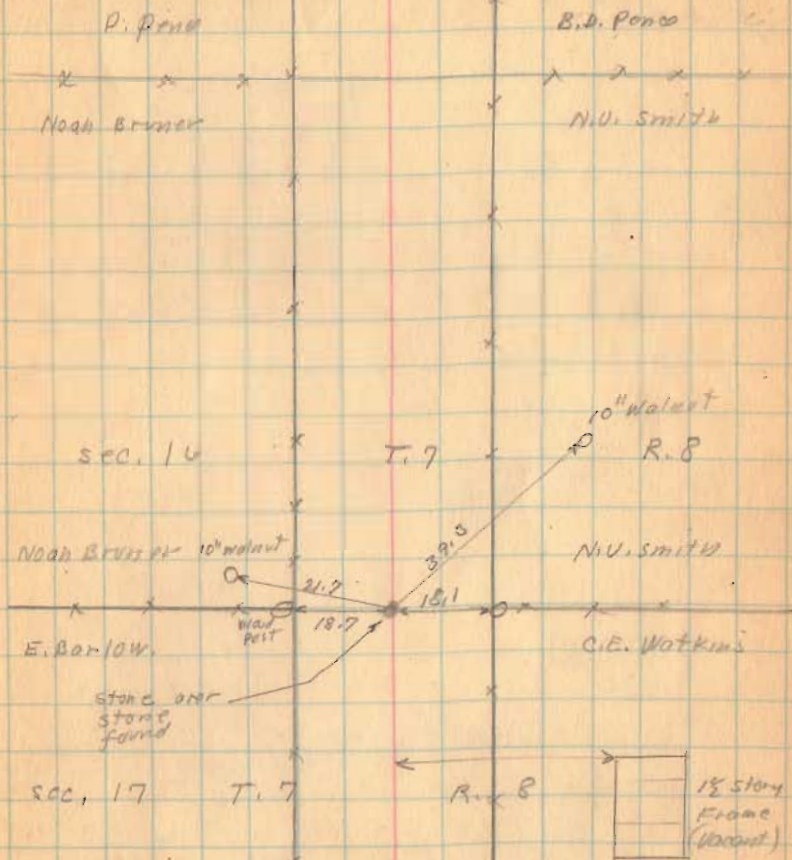
Road 80

174

INDEXED ON MAP

9-12-26

78





FB 713

T.R. 80  
Bloomfield Twp.  
Logan Co., Ohio

53+14.21 - P.I. - Fd. Stone

1/4 section corner - Intersection

T.R. 53 w/ T.R. 80 - shown as

Sta. 53+15.5 in F.Bk. # 401,

pg. 49 - placed brick pos.

around stone - Set R.R.

Spike over stone to surface

w/ 3/4" mag nail straddles.

Bk. C, pg. 71, pt. # 8

Bk. C, pg. 296

24+54.5 - P.I. - Fd. Stone -

1/4 section corner - Fd. bundle

of R.R. Spikes on top of stone

for magnetic attraction - This

stone is  $\approx$  5' West of the

West pavement edge of

T.R. 53.

F.Bk. # 401, pg. 48

Bk. C, pg. 71, pt. # 3

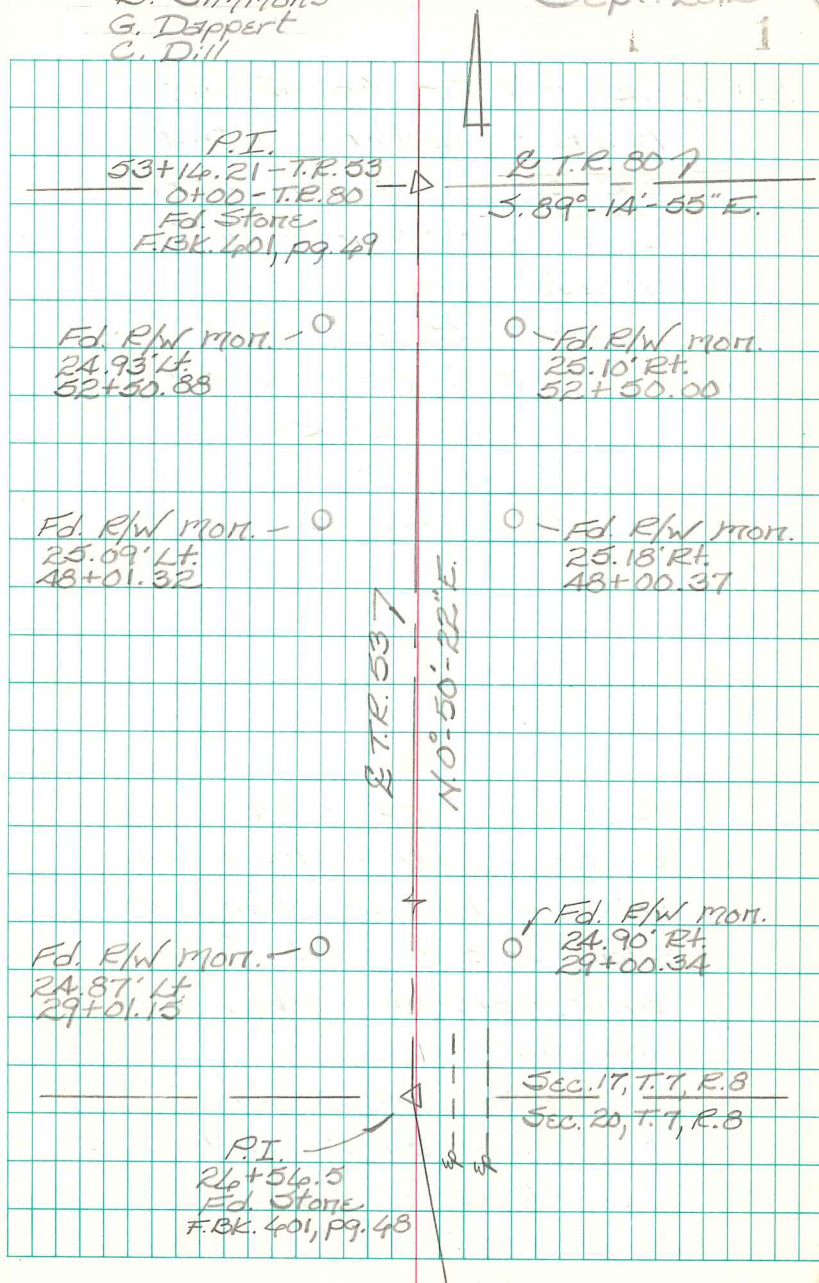
Bk. C, pg. 296, pt. C

INDEXED ON MAP

1741

B. Simmons  
G. Dappert  
C. Dill

Sept. 2012



FB 713

T.R. 80  
Bloomfield Twp  
Logan Co., Ohio

13+27.04 - P.I. - Fd. Stone w/  
brick -  $\frac{1}{4}$  corner - Set  
R.R. Spike over stone to  
surface +  $\frac{3}{4}$ " mag nail  
straddles

Ref: F.B.K. #598, pg. 77

Bk. C, pg. 71, pt. #9  
 $0^{\circ}-35'-29"$  Rt.

10+00.00 - P.O.T. - Set R.R. Spike

5+00.00 - P.O.T. - Set R.R. Spike

0+50.00 - P.O.T. - Set R.R. Spike

0+00.00 - P.I. - Fd. Stone -  $\frac{1}{4}$   
section corner - Intersection  
T.R. 53 w/ T.R. 80 - shown as  
Sta. 53+15.5 in F.B.K. #401,  
pg. 49 - placed brick pcs.  
around stone - Set R.R.  
Spike over stone to surface  
w/  $\frac{3}{4}$ " mag nail straddles.

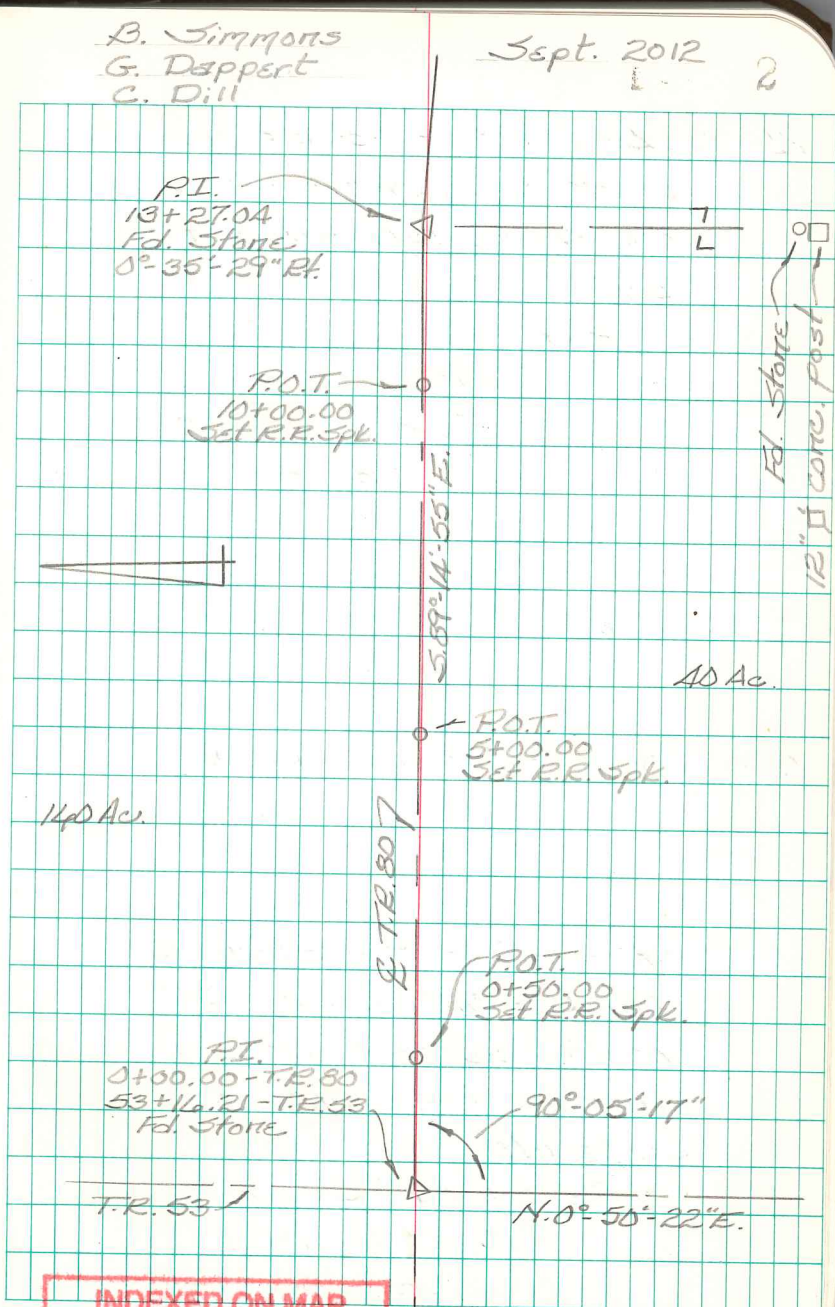
Ref: Bk. C, pg. 71, pt. #8

Bk. C, pg. 296

B. Simmons  
G. Dappert  
C. Dill

Sept. 2012

2



INDEXED ON MAP  
1741

FB 713

T.R. 80  
Bloomfield Twp.  
Logan Co., Ohio

24+51.44 - P.I. - Fd. stone over  
stone w/ brick - 1/4 section  
corner - Installed monument  
box

Ref: Bk. C, pg. 71, pt. #10  
Bk. C, pg. 296, pt. B  
F.Bk. #598, pg. 78  
0°-30'-59" Lt.

20+00.00 - P.O.T. - Set R.R. Spike

15+00.00 - P.O.T. - Set R.R. Spike

13+27.04 - P.I. - Fd. stone w/  
brick - 1/4 corner - Set  
R.R. Spike over stone to  
surface + 3/4" mag nail  
straddles

Ref: F.Bk. #598, pg. 77  
Bk. C, pg. 71, pt. #9  
0°-35'-29" Rt.

B. Simmons  
G. Dappert  
C. Dill

Sept. 2012

99.4669 Ac.

20.259 Ac.

Sec. 16, T. 7, R. 8

Section line 7

Sec. 17, T. 7, R. 8



P.I.  
24+51.44  
Fd. Stone over stone  
0°-30'-59" Lt.  
See pg. 7

P.O.T.  
20+00.00  
Set R.R. Spike

140 Ac.

E T.R. 80 7  
5.88°-39'-24" E.

40 Ac.

P.O.T.  
15+00.00  
Set R.R. Spike

Set mag nail  
4.25" Pt.  
13+27.04  
Tfv. pt.

P.I.  
13+27.04  
Fd. Stone  
0°-35'-29" Rt.

40 Ac.

INDEXED ON MAP

174



FB 713

T.R. 80  
Bloomfield Twp.  
Logan Co., Ohio

53+09.02 - P.I. - Fd. 1" square  
iron bar - 1/4 section  
corner

Ref: F.Bk. # 598, pg. 79  
F.Bk. # 572, pg. 27  
F.Bk. # 708, pg. 23, Pt. B  
Bk. C, pg. 330, Pt. D.  
R-7871  
0°-04'-33" Rt.

52+00.00 - P.O.T. - Set R.R. Spike

45+00.00 - P.O.T. - Set R.R. Spike

40+00.00 - P.O.T. - Set R.R. Spike

39+85.02 - P.I. - Fd. stone w/  
brick - 1/16 corner - Set R.R.  
Spike over stone to surface  
+ 3/4" mag nail straddles.

Ref: F.Bk. # 598, pg. 79  
R-5230  
R-7871  
0°-05'-35" Lt.

INDEXED ON MAP

B. Simmons  
G. Dappert  
C. Dill

Sept. 2012

5

1/4 section line 7

Fd. R.R. Spk.  
0.25' Lt.  
53+00.55

P.I.  
53+09.02  
Fd. 1" iron bar  
0°-04'-33" Rt.

9.09' (per notes)

Q.C.R. 217

52+99.93  
(per notes)  
F.Bk. # 572, pg. 27  
F.Bk. # 598, pg. 79

2.38 Ac.

P.O.T.  
52+00.00  
Set R.R. Spk.

19.25 Ac.

5.89' 1/4" - 00' E.

99.1619 Ac.

P.O.T.  
45+00.00  
Set R.R. Spk.

Q.T.R. 807

P.O.T.  
40+00.00  
Set R.R. Spk.

P.I.  
39+85.02  
Fd. Stone  
0°-05'-35" Lt.

60 Ac.

INDEXED ON MAP

174



FB 713

T.R. 80  
Bloomfield Twp.  
Logan Co., Ohio

26+51.44 - P.I. - Fd. stone over  
stone w/ pcs. of brick -  
1/4 section corner - Installed  
a monument box.  
0°-30'-59" Lt.

Fd. 5/8" dia. iron bar  
31.33' Lt. / 26+50.08  
R-4697

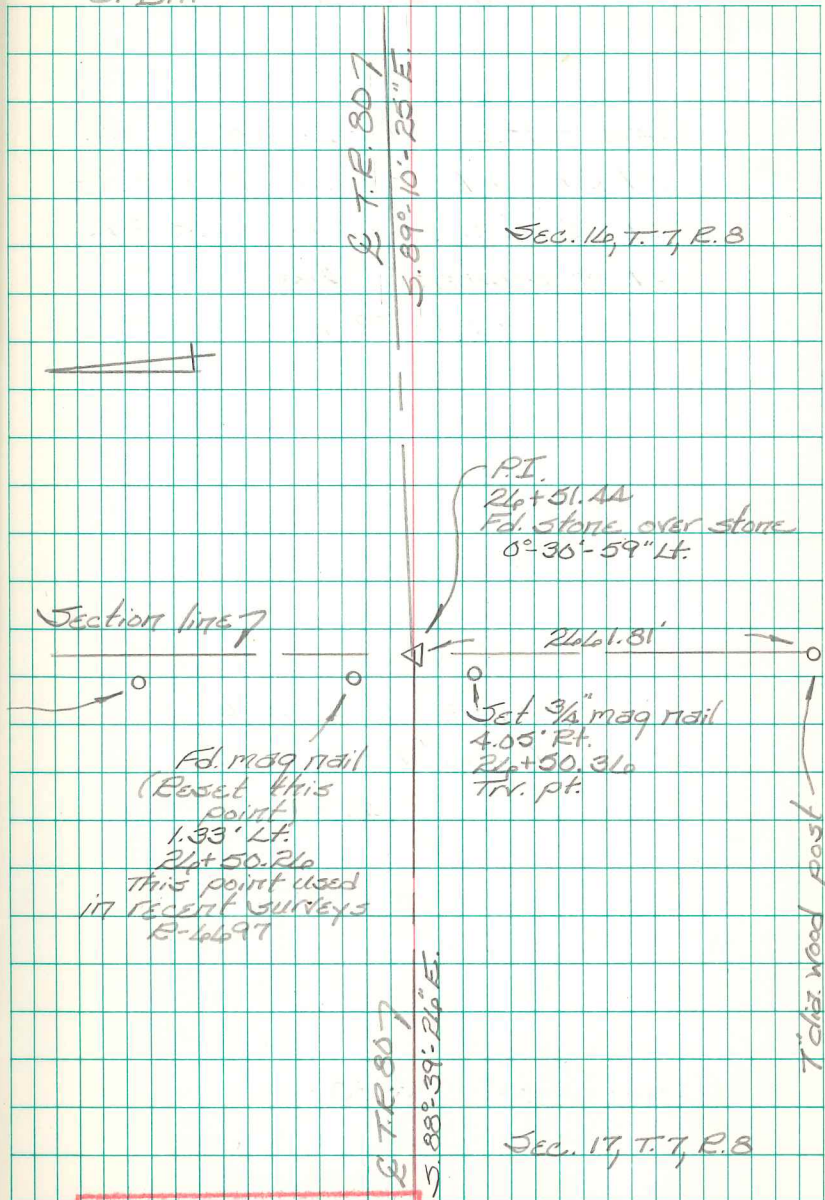
Note:

The notes on pg. 6 were  
compiled from a 2010 site  
survey of Brq. 80-1.46.

C.D.D.

B. Simmons  
G. Dappert  
C. Dill

Sept. 2012



INDEXED ON MAP  
1741