

Lenhart - Darmyple Survey
 Bloomfield Twp.
 sec. 17 T. 7 R. 8

SIT. 579
 Route 274
 see BOOK 518
 Page 14

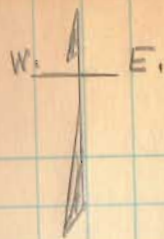
- A - Stone see Book 601 Page 69
- B " " " 601 " 70
- C Iron (see Book 601 Page 66)
- D " " " " " 4
- E " " " " " 69

see Book C Page 71
 see Book C Page 296

E $\frac{1}{2}$ Dist A TO B.
 Turned $90^{\circ}-21'$ as shown
 set stakes on line
 EF.
 I did not establish
 corner F.

Road 35
 see Book 601
 Page 66

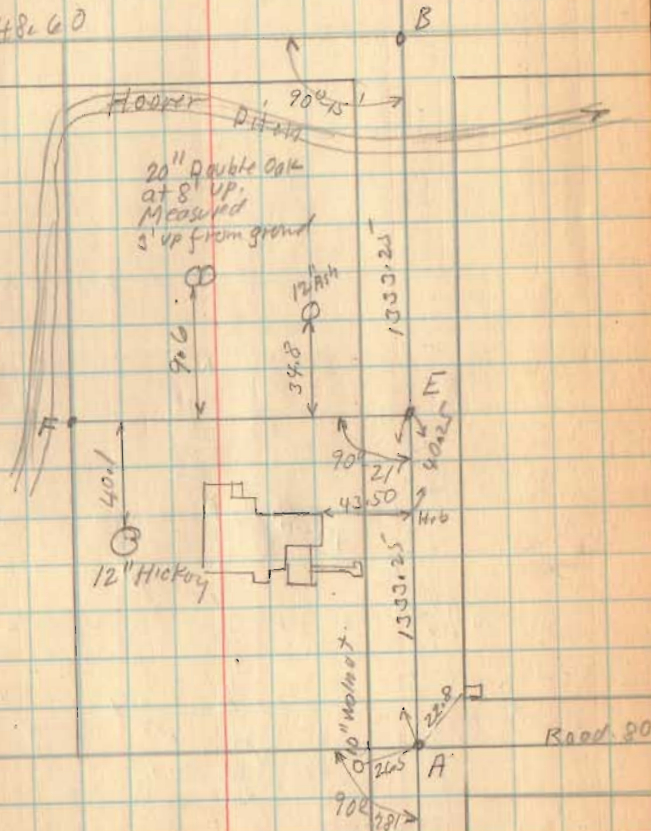
Road 35
 see Book 601
 Page 6970



JUNE-12-1937
 WORM
 F. WRIGHT
 W. R. WRIGHT.

2648.60

2658.0



(1781)

INDEXED ON MAP