

Road No 23 - Bloomfield Twp.
 from Road # 58 to Road # 59

Sta. 1+00 Monuments.

Monumented - 40' Road -

See



Section 29 T.2 R.8

Mary M. Claytor

To Maplewood
 Road # 58

Sta. 0+00
 0°-18'-30" left
 0°-37'

Stone
 51.0'

Fannie A. Stewart

Sec. 32 T.2 R.8

August 17, 1959 88

E. Cox
 J. Montgomery
 M. Johns
 G. C. Inskeep

Sec. 28 - T.2 - R.8

concrete curb

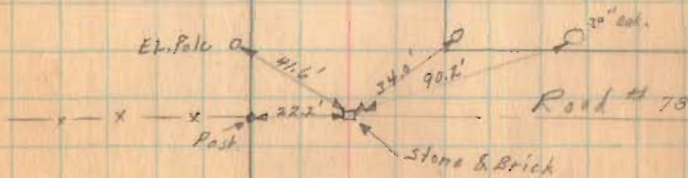
R.L. Cooke et al

Id. stone & Aug 1970 rd.
 .4' deep

Road # 59

8" Column
 Wm. R. Wingo

Sec. 33 T.2 R.8



1817

Road # 23 Bloomfield Township

21+00 Monuments

16+00 Monuments

11+00 Monuments

6+00 Monuments

8-17-1939

63

Raymond Miller et al
19+8

No fence

Mary M. Clayton

18+58
13.3

Burr
48" Oak

Mary M. Clayton
10+95 x x

R. L. Burk et al

20" Elm. O 6+18.5
14.47

Dbl. Sycamore

18" Sycamore O

12" Sycamore O 5+10.3
14.3

1817

INDEXED ON MAP

Road # 23 Bloomfield Township

42+00 Monuments

37+00 Monuments

32+00 Monuments

27+00 Monuments

26+00 Monuments

Shelby County
Adair County



31+31
15.0 30° Elm

22+79
17.5' 30° Elm
22+05
17.0' 36° Elm
1817

INDEXED ON MAP

Road No. 23 - Bloomfield Township

47400 Monument (West side only)

Ed mon. at 47400
 top six inches
 broken off.
 12" Locust
 "Y"
 12 B June 1872 CN.
 Ed. 1/2 ϕ rebar
 20" long
 top bent
 Straightened it.
 Made search
 for monuments
 did not find

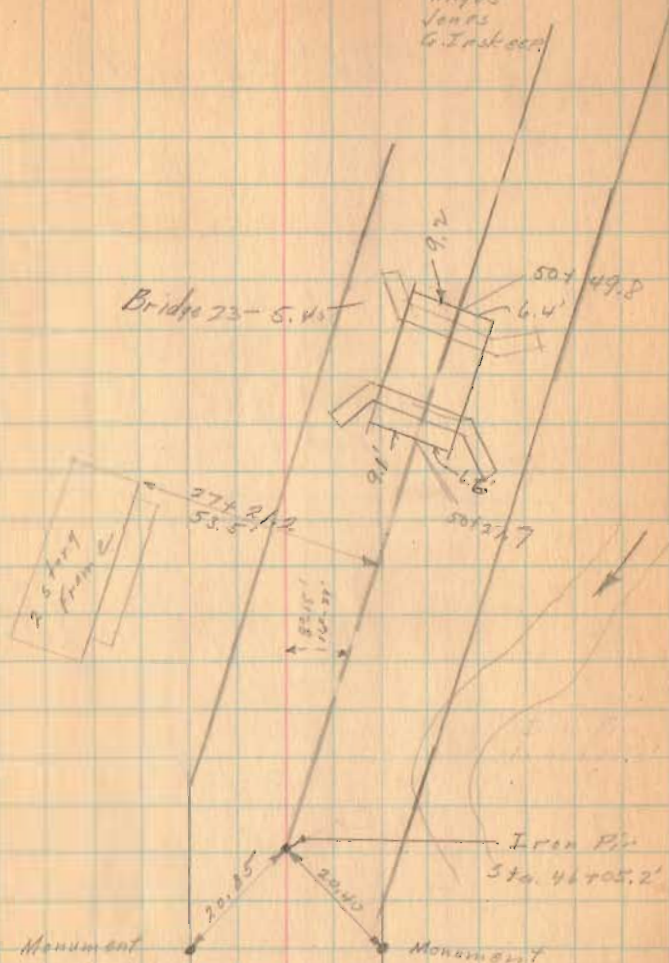
46700 Monuments



8/21/39

65

Coe
 Wilgus
 Jones
 G. Inskeep



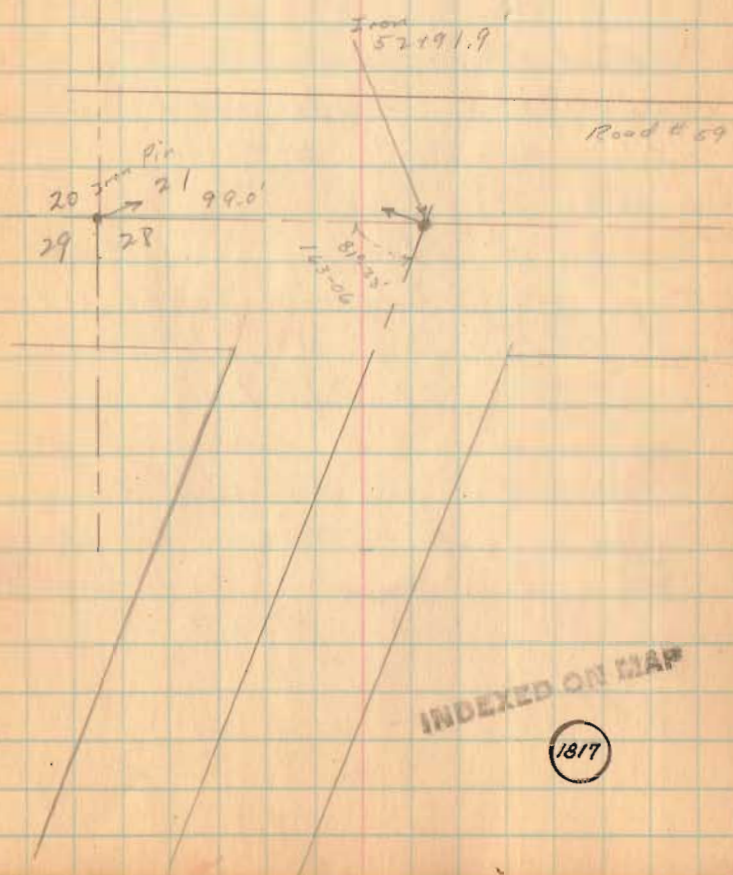
Sec 29-2-P

1817

1817

INDEXED ON MAP

Rd # 23 (contd)



52700 Measurements

INDEXED ON MAP

1817

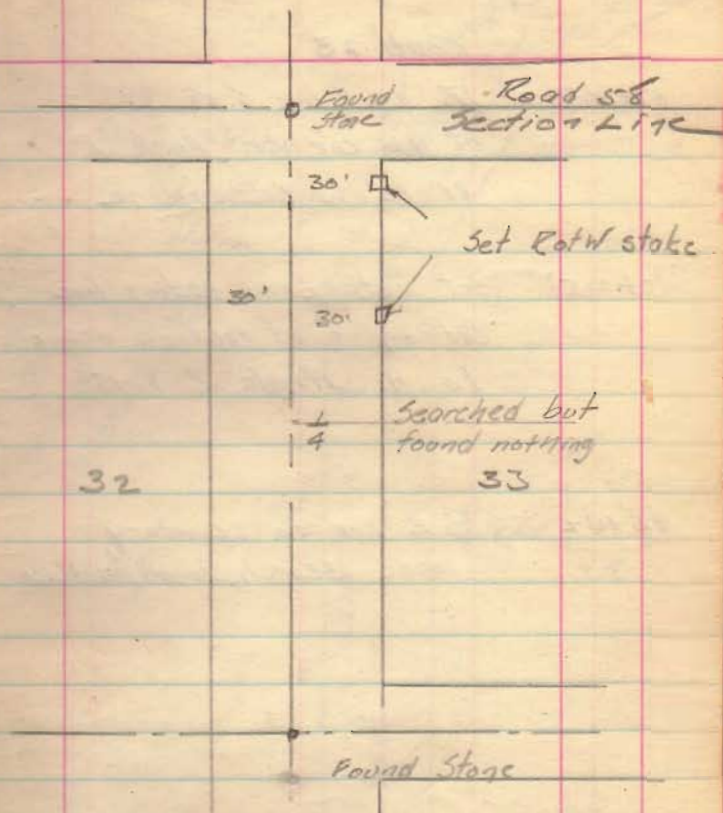
2 30

7-28-36

Road 23

29.

28 30



1819

INDEXED ON MAP

7-28-36

C.A.L.
J.H.
R. Cocherel
W. Hodson

Road 23

51+91.7 17. of N. line S. 28, 99° E
at N.W. corner. Angle R
81°-35' to Section Line

45+00.5 Set stake on section line
and on E. of road as occupied
to N. Angle R 8°-15'

25+42 S.E. cor to cemetery
Made search, found nothing

0+00 Stakes (found)

70-10
81-35
+8-15
180-00

51+83.0

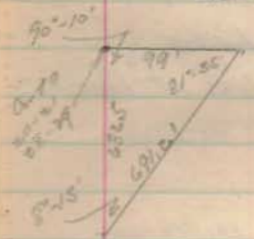
90°-10

IP set (see page
17 set to this book)

Road 59
see Book 601

Set R. of W
stakes

Set stake
8°-15'



Com

29

1/4 cor

2542

28

51+30.1
Range line

Cement corner

Book 58

Stake (found)

8° Catal po

30' 30'