

C.A. Inskip
Bill Wright
Murray Jones
G. Wilque

4/21/35

Road 21

See Page 15 this book

+49.3 PT 14-23-30 ✓ 4°-00' Curve

146 13°-24' ✓

145 11°-24' ✓

144 9°-24' ✓

143 7°-24' ✓

142 5°-24' ✓

141 3°-24' ✓

140 R 1°-24' ✓

+29.7 P.C. 4°-00' Curve R

139

60
1 1/2
20

85

A = 28°-47'

D = 4°-00'

R = 1432.69

T = 367.33

L = 719.6

E = 46.4

P.I. 142+97

14297

367.33

13929.67

719.6

14649.3

set 1/2" iron bar

PC 139+29.7

PT set 1/2" I.P.
old sta
see page 15
146+49.3
146+49.3

3593

INDEXED ON MAP

154 9-4L

153 7-4L ✓

152 5-4L ✓

151 3-4L ✓

150 L 1°-46' ✓

+ 11.2 PC, 4°-00' Corre L

149

148

147

15313
386.8
<hr/> 15699.8

66

A = 30°-13'

D = 4°-00'

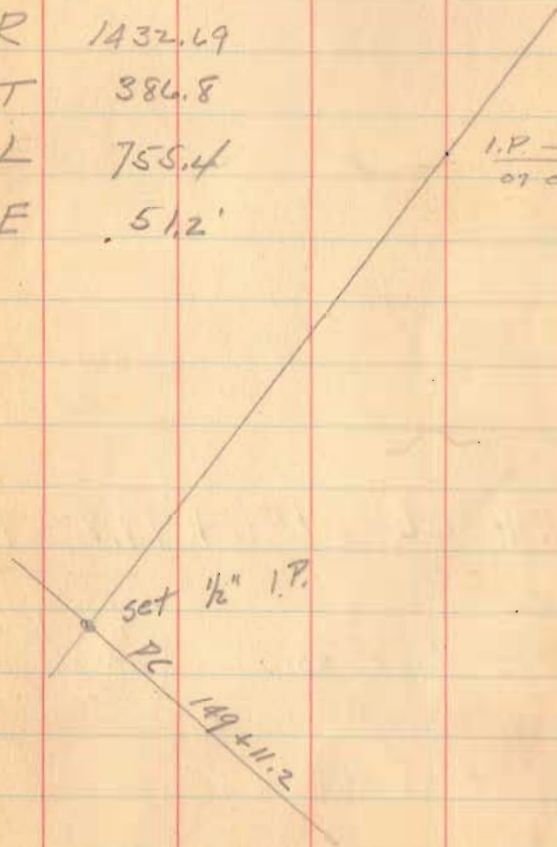
R 1432.69

T 386.8

L 755.4

E 51.2'

I.P. - Found
of old L



$$\begin{array}{r} 100 \\ 66.6 \\ \hline 33.4 \end{array}$$

$$\begin{array}{r} 99.8 \\ 33.4 \\ \hline 66.4 \end{array}$$

$$156 + 66.6 = 156 + 99.8 = 157$$

+66.6 P.T. 15-06-30

3 to 156 + 99.8
of old survey
see page 15

156 13-46

155 11-46

Set 1/2" I.P.

Reset 3/8" x 24" I.P. 7/25/83

1920
3630
18250

Restaking Curves on Road 21

Sta 139+29.7 to Sta 152+66.6

see page 65 this book

set 1"x24" stakes 30' R & L at 25' stations

+50	6-24	✓	
+25	5-54	✓	
142	5-24	✓	
+75	4-54	✓	
+50	4-24	✓	
+25	3-54	✓	
141	3-24	✓	
+75	2-54	✓	
+50	2-24	✓	
+25 ^E	1-54	✓	
140	1-24	✓	
+75	0-54	✓	
+50	0-24	✓	
+29.7	Pl.	1°-00'	Curve R
139			

C.A. Hiskoop
J.H. Hiskoop
Murray Jones
R.J. Kinnard

7/25/35

28

A = 28-41'

D = 4-00'

R = 1432.69

T = 367.33

L = 719.6

E = 46.4

hub □ 30'

Iron bar $\frac{1}{2}$

30' □ hub

147

set 1"x2"x24" stakes 30' P.B.L. of E
100' stations

+49.3 P.I. 14-23-30 4°-00 Curve

+25 13-54 ✓

146 13-24 ✓

+75 12-54 ✓

+50 12-24 ✓

+25 11-54 ✓

145 11-24 ✓

+75 10-54 ✓

+50 10-24 ✓

+25 9-54 ✓

144 9-24 ✓

+75 8°-54 ✓

+50 8°-24 ✓

+25 7-54 ✓

143 7°-24 ✓

+75 6°-54 ✓

142

7

100' bar

□ 30' • 30' □

□ 30' □ 30' □

152 5'-46" ✓

+75 5'-16" ✓

+50 4'-46" ✓

+25 4'-16" ✓

151 3'-46" ✓

+75 3'-16" ✓

+50 2'-46" ✓

+25 2'-16" ✓

150 L 1'-46" ✓

+75 1'-16" ✓

+50 0'-46" ✓

1" x 2" x 24" stakes set 30' R @ L odd
at 25' o/a.

+ 1112 P.C. 4'-00" Curve L

149

148

$$A = 30^{\circ} - 13'$$

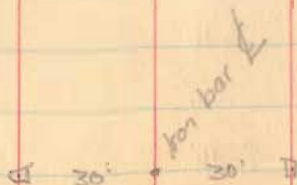
$$D = 4^{\circ} - 00'$$

$$R = 1432.69$$

$$T = 386.8$$

$$L = 756.4$$

$$E = 51.2'$$



+66L	15°-06'-30"	P.T.	4°-00'	Corr'd
+50	14°-46'			
+25	14°-16'			✓
156	13°-46'			✓
+75	13°-16'			✓
+50	12°-46'			✓
+25	12°-16'			✓
155	11°-46'			✓
+75	11°-16'			✓
+50	10°-46'			✓
+25	10°-16'			✓
154	9°-46'			✓
+75	9°-16'			✓
+50	8°-46'			✓
+25	8°-16'			✓
153	7°-46'			✓
+75	7°-16'			✓
+50	6°-46'			✓
+25	6°-16'			✓
152				

30' 30'

100 bar E