

MINNICH SURVEY
SEC. 9 T-7s. R-8e.
BLOOMFIELD TOWNSHIP
APRIL 13, 1968

The following described real estate situated in Bloomfield Township, Logan County, Ohio and being part of the southeast 1/4 of Section 9, Town 7 south, Range 8 east of the First Principal Meridian and more particularly described as follows:

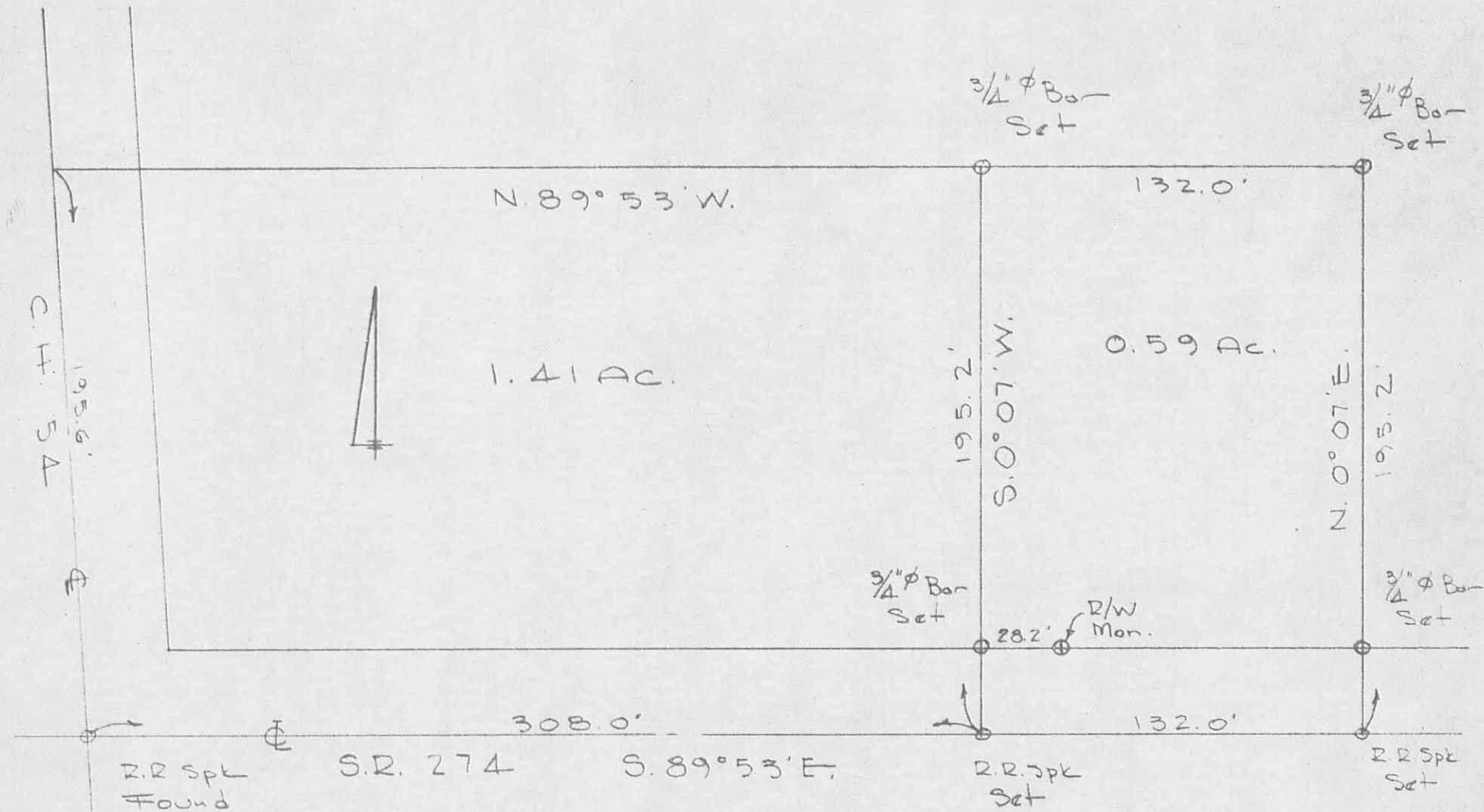
Beginning at an iron pin in the center of State Route 274 at the southeast corner of Myron D. Minnich's 2.00 acre tract, said pin being S.89° 53'E. 440.0 feet from an iron pin at the intersection of said centerline and the centerline of County Highway No. 54; thence with said Minnich's east line N.0° 07'E. 195.2 feet to an iron bar at the northeast corner of said tract, passing an iron bar at 30.0 feet; thence with said Minnich's north line N.89° 53'W. 132.0 feet to an iron bar; thence S.0° 07'W. 195.2 feet to an iron pin in the center of said S.R. 274, passing an iron bar at 165.2 feet; thence S.89° 53'E. 132.0 feet to the place of beginning.

Containing 0.59 of an acre more or less.

The above described tract being part of Myron D. Minnich's 2.00 acre tract.

INDEXED ON MAP

4218 ID



MINNICH SURVEY
 SEC. 9 T-7S. R-8E.
 BLOOMFIELD TWP.
 LOGAN COUNTY, OHIO
 APRIL 13, 1968
 SCALE 1" = 50'

INDEXED ON MAP

4218 IP

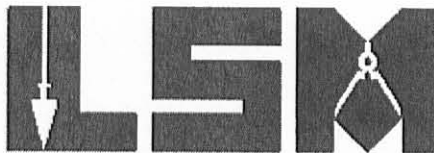
DAN L. DODSON
 REG. SURVEYOR 4270
 BELLEFONTAINE, O.

REC'D 12-3-09 SMY AK ✓

Lee Surveying and Mapping Co., Inc.

Land Surveys • Topography • Subdivisions • Construction Layout

117 N. Madriver St.
Bellefontaine OH 43311



Phone: (937) 593-7335
Fax: (937) 593-7444
surveys@lsmcinc.us

DAVIS 4.444 ACRES

Lying in Section 9, Town 7, Range 8, Bloomfield Township, Logan County, Ohio.

Being out of the Josephine A. Davis 78 acre tract as deeded and described in Official Record 471, Page 310, Tract III, Parcel Two of the Logan County Records of Deeds and being more particularly described as follows:

Beginning on a MAG nail set on the surface over a railroad spike found on the south line of Section 9 at the intersection of the center-lines of Ohio Route 274 and County Road 54.

THENCE, with the south line of Section 9 and the center-line of Ohio Route 274 (60 feet wide), S 89°-40'-48"W, a distance of 279.82 feet to a MAG nail set.

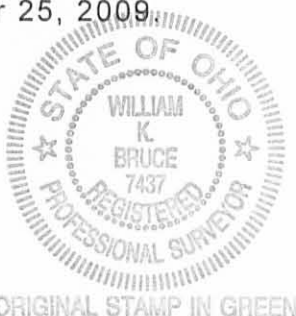
THENCE, N 05°-28'-46"W, a distance of 659.90 feet to a 5/8 inch iron rod set, passing a 5/8 inch iron rod set at 30.12.

THENCE, N 85°-09'-54"E, a distance of 298.07 feet to a MAG nail set on the center-line of County Highway 54, passing a 5/8 inch iron rod set at 268.04 feet.

THENCE, with the center-line of County Highway 54 (60 feet wide), S 03°-51'-05"E, a distance of 681.99 feet to the point of beginning, passing a MAG nail set at 486.39 feet.

Containing 4.444 acres, of which 0.641 acre is within the highway rights-of-way.

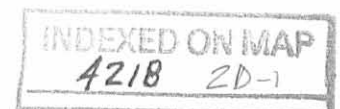
The basis for bearings is the south line of Section 9 east of the intersection of County Highway 54, being S 89°-41'-33"W, and all other bearings are from angles and distances measured in a field survey by Lee Surveying and Mapping Co., Inc. on November 25, 2009.



Description prepared by:

William K. Bruce

William K. Bruce
Professional Surveyor 7437
November 30, 2009



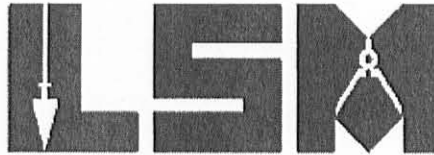
3183119B

REC'D 12-3-09 SVM/OM

Lee Surveying and Mapping Co., Inc.

Land Surveys • Topography • Subdivisions • Construction Layout

117 N. Madriver St.
Bellefontaine OH 43311



Phone: (937) 593-7335
Fax: (937) 593-7444
surveys@lsminc.us

DAVIS 62.185 ACRES

Lying in Section 9, Town 7, Range 8, Bloomfield Township, Logan County, Ohio.

Being out of the Josephine A. Davis 78 acre tract as deeded and described in Official Record 471, Page 310, Tract III, Parcel Two of the Logan County Records of Deeds and being more particularly described as follows:

Commencing on a MAG nail set on the surface over a railroad spike found on the south line of Section 9 at the intersection of the center-lines of Ohio Route 274 and County Road 54.

THENCE, with the center-line of County Highway 54 (60 feet wide), N 03°-51'-18"W, a distance of 195.60 feet to a MAG nail set at the TRUE POINT OF BEGINNING.

THENCE, with the center-line of County Highway 54, the following two courses:

N 03°-51'-05"W, a distance of 1451.08 feet to a 1 inch iron pipe found at P.I. Station 228+51.85 (Logan County Engineer's Right-of-Way Plans X-54A), passing a MAG nail set at 486.39 feet and a 5/8 inch iron rod found at Station 223+53.15 at 952.36 feet.

N 17°-15'-16"W, a distance of 1062.14 feet to a 5/8 inch iron rod found at Station 239+10.75 on the north lines of the southeast quarter of Section 9 and Bloomfield Township, passing a 3/4 inch iron pipe found at Station 231+48.1 at 299.31 feet.

THENCE, with the north lines of the southeast quarter of Section 9 and Bloomfield Township and the south line of the Betty J. Davis and Lanny L. Davis Trustee, 114.32 acre tract (O.R. 290, Pages 948 & 949), N 89°-46'-42"E, a distance of 1340.95 feet to a 5/8 inch iron rod set at the northeast corner of the southeast quarter, and on the east line of, Section 9, passing a 5/8 inch iron rod set at 31.38 feet.

THENCE, with the east line of Section 9 and the west lines of the Phyllis B. Yeasel, Trustee 78.83 acre tract (O.R. 433, Pg. 45, Tract III) and the Brian P. Huber 1.17 acre tract (O.R. 921, Pg. 628), S 00°-00'-00"E, a distance of 2657.09 feet to a MAG nail set at the southeast corner of Section 9 on the center-line of Ohio Route 274, passing a 5/8 inch iron rod set at 2627.09 feet.

THENCE, with the south line of Section 9 and the center-line of Ohio Route 274, S 89°-41'-33"W, a distance of 475.09 feet to a railroad spike found.

Lee Surveying and Mapping Co., Inc.

Land Surveys • Topography • Subdivisions • Construction Layout

117 N. Madriver St.
Bellefontaine OH 43311



Phone: (937) 593-7335
Fax: (937) 593-7444
surveys@lsminc.us

THENCE, with the east line of the Shawn T. Jordan 0.59 acre tract (O.R. 217, Pg. 297), N 00°-25'-30"W, a distance of 195.29 feet to a 3/4 inch iron rod found, passing a 3/4 inch iron rod found at 29.75 feet.

THENCE, with the north lines of the said 0.59 acre tract and the Terry L. Cumbo 1.41 acre tract (O.R. 498, Pg. 554), S 89°-37'-24"W, a distance of 451.82 feet to the point of beginning, passing a 5/8 inch iron rod set at 420.75 feet and a railroad rail found at 419.74 feet.

Containing 62.185 acres, of which 1.954 acres are within the highway rights-of-way.

The basis for bearings is the south line of Section 9 east of the intersection of County Highway 54, being S 89°-41'-33"W, and all other bearings are from angles and distances measured in a field survey by Lee Surveying and Mapping Co., Inc. on November 25, 2009.



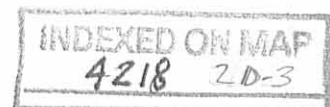
ORIGINAL STAMP IN GREEN

Description prepared by:

William K. Bruce

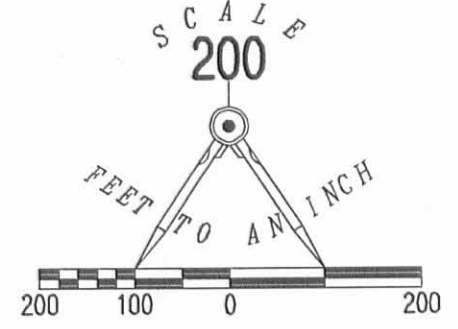
William K. Bruce
Professional Surveyor 7437
November 30, 2009

3183119B



BETTY J. DAVIS AND
LANNY L. DAVIS, TRUSTEE
114.32 ACRES
O.R. 290, PAGES 948 & 949

BETTY J. DAVIS AND
LANNY L. DAVIS, TRUSTEE
57.99 ACRES
O.R. 290, PG. 948



LEGEND:

- ⊕ MAG NAIL SET ON SURFACE OVER RAILROAD SPIKE FOUND
- ⊗ RAILROAD SPIKE FOUND
- ⊙ MAG NAIL SET
- ⊙ 1 INCH IRON PIPE FOUND
- ⊙ 3/4 INCH IRON PIPE FOUND
- 5/8 INCH IRON ROD FOUND
- 5/8 INCH IRON ROD SET WITH PLASTIC I.D. CAP STAMPED "LEE 7437"
- 3/4 INCH IRON ROD FOUND
- ⊠ RAILROAD RAIL FOUND

STOKES TOWNSHIP
BLOOMFIELD TOWNSHIP

STATION 239+10.75
(LOGAN COUNTY ENG.
R/W PLANS X-54A)

COUNTY HIGHWAY 54 (60')

STATION 231+48.1
(LOGAN COUNTY ENG.
R/W PLANS X-54A)

P.I. STATION 228+51.85
(LOGAN COUNTY ENG.
R/W PLANS X-54A)

62.185 ACRES
OF WHICH 1.954 ACRES ARE WITHIN
THE HIGHWAY RIGHTS-OF-WAY

JOSEPHINE A. DAVIS
78 ACRES
O.R. 471, PG. 310
TRACT III, PARCEL TWO

PHYLLIS B. YEASEL, TRUSTEE
78.83 ACRES
O.R. 433, PG. 45
TRACT III

STATION 223+53.15
(LOGAN COUNTY ENG.
R/W PLANS X-54A)

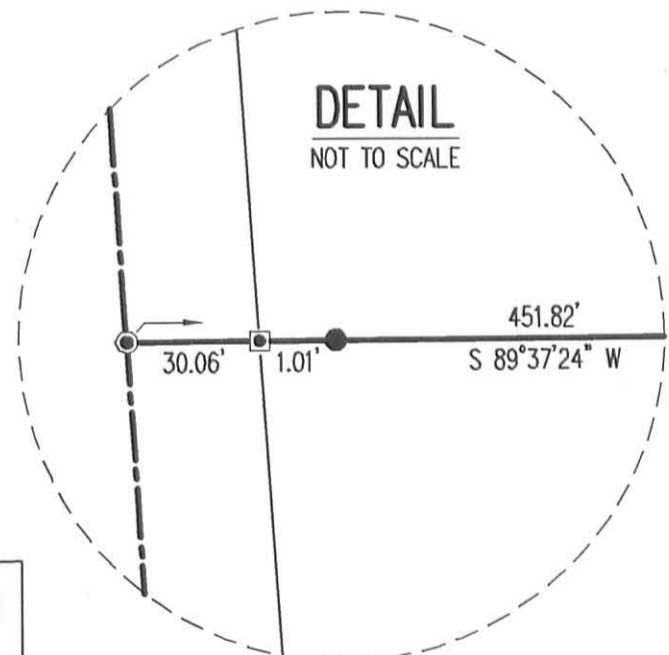
4.444 ACRES
OF WHICH 0.641 ACRE IS WITHIN
THE HIGHWAY RIGHTS-OF-WAY

SEE
DETAIL

TERRY L. CUMBO
1.41 ACRES
O.R. 498, PG. 554

SHAWN T. JORDAN
0.59 ACRE
O.R. 217, PG. 297

BRIAN P. HUBER
1.17 ACRES
O.R. 921, PG. 628



SURVEY OF TWO TRACTS OUT OF THE
JOSEPHINE A. DAVIS
78 ACRE TRACT
OFFICIAL RECORD 471, PAGE 310
TRACT III, PARCEL TWO
SECTION 9, TOWN 7, RANGE 8
BLOOMFIELD TOWNSHIP
LOGAN COUNTY, OHIO

SURVEYED BY:

William K. Bruce
WILLIAM K. BRUCE
PROFESSIONAL SURVEYOR 7437
NOVEMBER 25, 2009

COPYRIGHT 2009 BY:
LEE SURVEYING & MAPPING CO., INC.
117 North Modriver Street
BELLEFONTAIN, OHIO 43111
(937) 593-7335
surveys@lsmcinc.us



ORIGINAL STAMP IN GREEN

KSS D1109 3183119B L-3183-2

