

# Lee Surveying and Mapping Co., Inc.

Land Surveys • Topography • Subdivisions • Construction Layout

117 N. Madriver St.  
Bellefontaine OH 43311



Phone: (937) 593-7335  
Fax: (937) 593-7444

## WHITEHEAD 0.126 ACRES

Lying in Section 25, Town 2, Range 8, Bloomfield Township, Logan County, Ohio.

Being out of the James Howard Whitehead and Kathleen Whitehead 1.086 acre tract as deeded and described in Official Record 125, Page 416 of the Logan County Records of Deeds and being more particularly described as follows:

Beginning at a P.K. nail over stone found at the southwest corner of Section 25, on the center-line of County Highway 58 (48 feet wide).

THENCE, with the south line of Section 25 and the center-line of County Highway 58, S 83°-00'-00" E, a distance of 2575.20 feet to a MAG nail set.

THENCE, N 7°-00'-00" E, a distance of 164.03 feet to a 5/8 inch iron rod set at the TRUE POINT OF BEGINNING, passing a 5/8 inch iron rod set at 24.00 feet.

THENCE, N 82°-24'-51" W, a distance of 245.77 feet to a 5/8 inch iron rod set.

THENCE, with the lines of the Howard A. Whitehead original 46.514 acre tract (O.R. 503, Pg. 403, Tract III), the following three (3) courses:

N 11°-53'-30" E, a distance of 21.31 feet to a 5/8 inch iron rod set.

S 83°-00'-00" E, a distance of 243.94 feet to a 5/8 inch iron rod set.

S 7°-00'-00" W, a distance of 23.75 feet to the point of beginning.

Containing 0.126 acres.

The basis for bearings is the south line of Section 25, being S 83°-00'-00" E, and all other bearings are from angles and distances measured in a field survey by Lee Surveying and Mapping Co., Inc. on September 17, 2001.

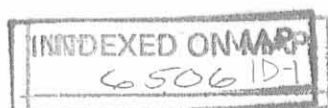
Description prepared by:



ORIGINAL STAMP IN GREEN

*Jeffrey I. Lee*  
Jeffrey I. Lee  
Professional Surveyor 6359  
September 21, 2001

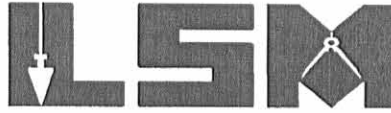
L-775



# Lee Surveying and Mapping Co., Inc.

Land Surveys • Topography • Subdivisions • Construction Layout

117 N. Madriver St.  
Bellefontaine OH 43311



Phone: (937) 593-7335  
Fax: (937) 593-7444

## WHITEHEAD 0.350 ACRES

Lying in Section 25, Town 2, Range 8, Bloomfield Township, Logan County, Ohio.

Being out of the Howard A. Whitehead original 46.514 acre tract as deeded and described in Official Record 503, Page 403, Tract III of the Logan County Records of Deeds and being more particularly described as follows:

Beginning at a P.K. nail over stone found at the southwest corner of Section 25, on the center-line of County Highway 58 (48 feet wide).

THENCE, with the south line of Section 25 and the center-line of County Highway 58, S 83°-00'-00" E, a distance of 2575.20 feet to a MAG nail set at the TRUE POINT OF BEGINNING.

THENCE, with the east line of the James Howard Whitehead 1.086 acre tract (O.R. 125, Pg. 416) N 7°-00'-00" E, a distance of 164.03 feet to a 5/8 inch iron rod set, passing a 5/8 inch iron rod set at 24.00 feet.

THENCE, S 82°-24'-51" E, a distance of 99.62 feet to a 5/8 inch iron rod set.

THENCE, S 11°-29'-10" W, a distance of 163.52 feet to a MAG nail set, passing a 5/8 inch iron rod set at 139.45 feet.

THENCE, with the south line of Section 25 and the center-line of County Highway 58, N 83°-00'-00" W, a distance of 86.83 feet to the point of beginning.

Containing 0.350 acres, of which 0.048 acre is within the highway right-of-way.

The basis for bearings is the south line of Section 25, being S 83°-00'-00" E, and all other bearings are from angles and distances measured in a field survey by Lee Surveying and Mapping Co., Inc. on September 17, 2001.

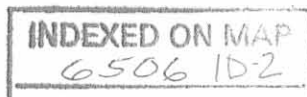
Description prepared by:

Jeffrey I. Lee  
Professional Surveyor 6359  
September 21, 2001



ORIGINAL STAMP IN GREEN

L-775

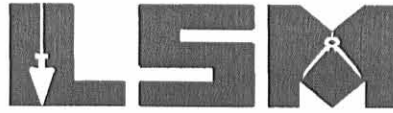


REC'D 9-25-01 5M/OK

# Lee Surveying and Mapping Co., Inc.

Land Surveys • Topography • Subdivisions • Construction Layout

117 N. Madriver St.  
Bellefontaine OH 43311



Phone: (937) 593-7335  
Fax: (937) 593-7444

## WHITEHEAD 4.157 ACRES

Lying in Section 25, Town 2, Range 8, Bloomfield Township, Logan County, Ohio.

Being out of the Howard A. Whitehead original 30.42 acre tract as deeded and described in Official Record 503, Page 403, Tract II of the Logan County Records of Deeds and being more particularly described as follows:

Beginning at a P.K. nail over stone found at the southwest corner of Section 25, on the center-line of County Highway 58 (48 feet wide).

THENCE, with the south line of Section 25, and the center-line of County Highway 58, S 83°-00'-00" E, a distance of 698.32 feet to a harrow tooth found at the TRUE POINT OF BEGINNING.

THENCE, with the east lines of the Duane Brown 3.575 acre tract (O.R. 376, Pg. 839) and the William W. Shultz original 49.0 acre tract (Vol. 396, Pg. 292), N 10°-06'-34" E, a distance of 1228.06 feet to a 5/8 inch iron rod set, passing a 5/8 inch iron rod found at 23.91 feet.

THENCE, with the south line of the Susan B. Shultz 40.0 acre tract (O.R. 32, Pg. 922, Tract II), S 81°-19'-26" E, a distance of 366.00 feet to a 5/8 inch iron rod set.

THENCE, S 10°-06'-34" W, a distance of 119.24 feet to a 5/8 inch iron rod set.

THENCE, S 49°-18'-01" E, a distance of 43.70 feet to a 5/8 inch iron rod set.

THENCE, S 2°-13'-51" W, a distance of 133.52 feet to a 5/8 inch iron rod set.

THENCE, S 31°-43'-15" W, a distance of 129.50 feet to a 5/8 inch iron rod set.

THENCE, N 82°-37'-02" W, a distance of 344.50 feet to a 5/8 inch iron rod set.

THENCE, S 10°-06'-34" W, a distance of 825.06 feet to a MAG nail set, passing a 5/8 inch iron rod set at 801.02 feet.

THENCE, with the south line of Section 25 and the center-line of County Highway 58, N 83°-00'-00" W, a distance of 30.04 feet to the point of beginning.

Containing 4.157 acres, of which 0.017 acre is within the highway right-of-way.

The basis for bearings is the south line of Section 25, being S 83°-00'-00" E, and all other bearings are from angles and distances measured in a field survey by Lee Surveying and Mapping Co., Inc. on September 17, 2001.

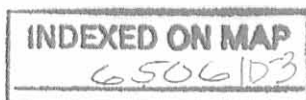
Description prepared by:

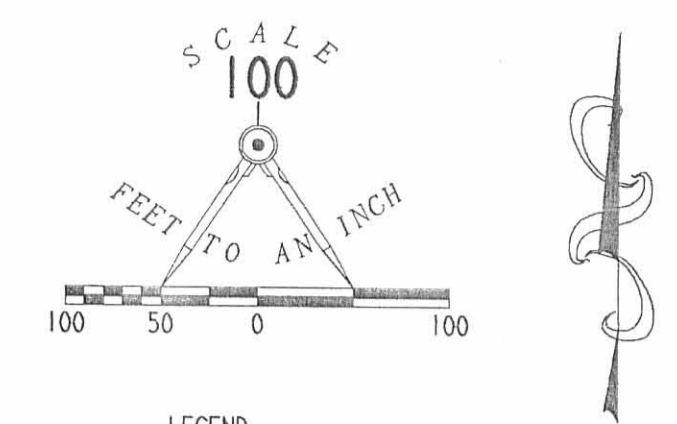


ORIGINAL STAMP IN GREEN

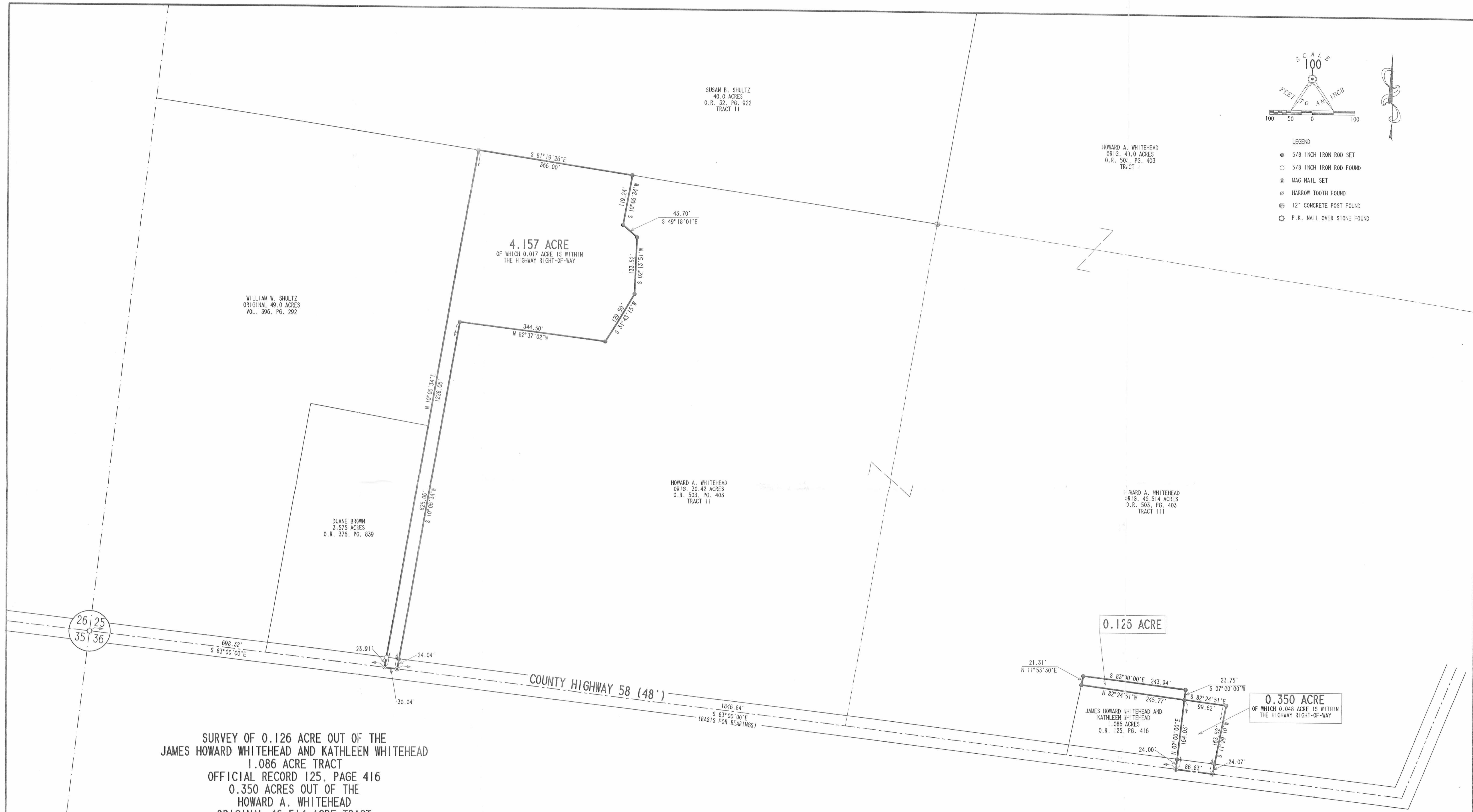
*Jeffrey I. Lee*  
Jeffrey I. Lee  
Professional Surveyor 6359  
September 21, 2001

L-775





- LEGEND
- 5/8 INCH IRON ROD SET
  - 5/8 INCH IRON ROD FOUND
  - ⊙ MAG NAIL SET
  - ⊙ HARROW TOOTH FOUND
  - ⊙ 12" CONCRETE POST FOUND
  - P.K. NAIL OVER STONE FOUND



SURVEY OF 0.126 ACRE OUT OF THE  
 JAMES HOWARD WHITEHEAD AND KATHLEEN WHITEHEAD  
 1.086 ACRE TRACT  
 OFFICIAL RECORD 125, PAGE 416  
 0.350 ACRES OUT OF THE  
 HOWARD A. WHITEHEAD  
 ORIGINAL 46.514 ACRE TRACT  
 OFFICIAL RECORD 503, PAGE 403, TRACT III  
 AND 4.157 ACRES OUT OF THE  
 HOWARD A. WHITEHEAD  
 ORIGINAL 30.42 ACRE TRACT  
 OFFICIAL RECORD 503, PAGE 403, TRACT II  
 SECTION 25, TOWN 2, RANGE 8  
 BLOOMFIELD TOWNSHIP  
 LOGAN COUNTY, OHIO

2 WORKING DAYS  
**BEFORE YOU DIG**  
 CALL TOLL FREE 800-362-2764  
 OHIO UTILITIES PROTECT OR SERVICE.

STATE OF OHIO  
 REGISTERED PROFESSIONAL SURVEYOR  
 JEFFREY L. LEE  
 6359

SURVEYED BY:  
 JEFFREY L. LEE  
 PROFESSIONAL SURVEYOR 6359  
 SEPTEMBER 17, 2001

COPYRIGHT 2001 BY:  
**LEE SURVEYING & MAPPING CO., INC.**  
 117 North Madison Street  
 BELLEFONTAINE, OHIO 43311  
 (937) 593-7335

ORIGINAL STAMP IN GREEN  
 D 404 HOWHITE L-775-1

INDEXED ON MAP  
 6506 P



# Lee Surveying and Mapping Co.



Farm Surveys • Lot Surveys • Topography • Subdivisions • Construction Layout

855 EAST SANDUSKY AVENUE  
BELLEFONTAINE, OHIO 43311

(513) 593-5780

CLAYTON M. LEE, P.S.  
JEFFREY I. LEE, P.S.

## WHITEHEAD SURVEY

Lying in Section 25, T-2, R-8, Bloomfield Township, Logan County, Ohio.

Being out of that 47.60 acres deeded and described in Volume 326, Page 983 of the Logan County Records of Deeds (Part 3) and more particularly described as follows:

Beginning at a railroad spike set on the center-line of County Highway 58, a distance easterly of 522.13 feet from the southwest corner of said 47.60 acres and also lying easterly a distance of 1616.73 feet from the line between grantor and the Duane Brown 17.72 acre tract. Beginning point designated as being Station 195+85.41 in the County Engineer's records. (Field Book 601, Page 42).

THENCE, N 11°-53'-30" E, a distance of 188.48 feet to an iron rod.

THENCE, parallel with the road, S 83°-00' E, a distance of 243.94 feet to an iron rod.

THENCE, at right angles, S 7°-00' W, a distance of 187.78 feet to a railroad spike set on the center-line of County Highway 68.

THENCE, with said road center-line, N 83°-00' W, a distance of 260.01 feet to the point of beginning. Containing 1.086 acre.

Last previous deed reference: Volume 326, Page 983.

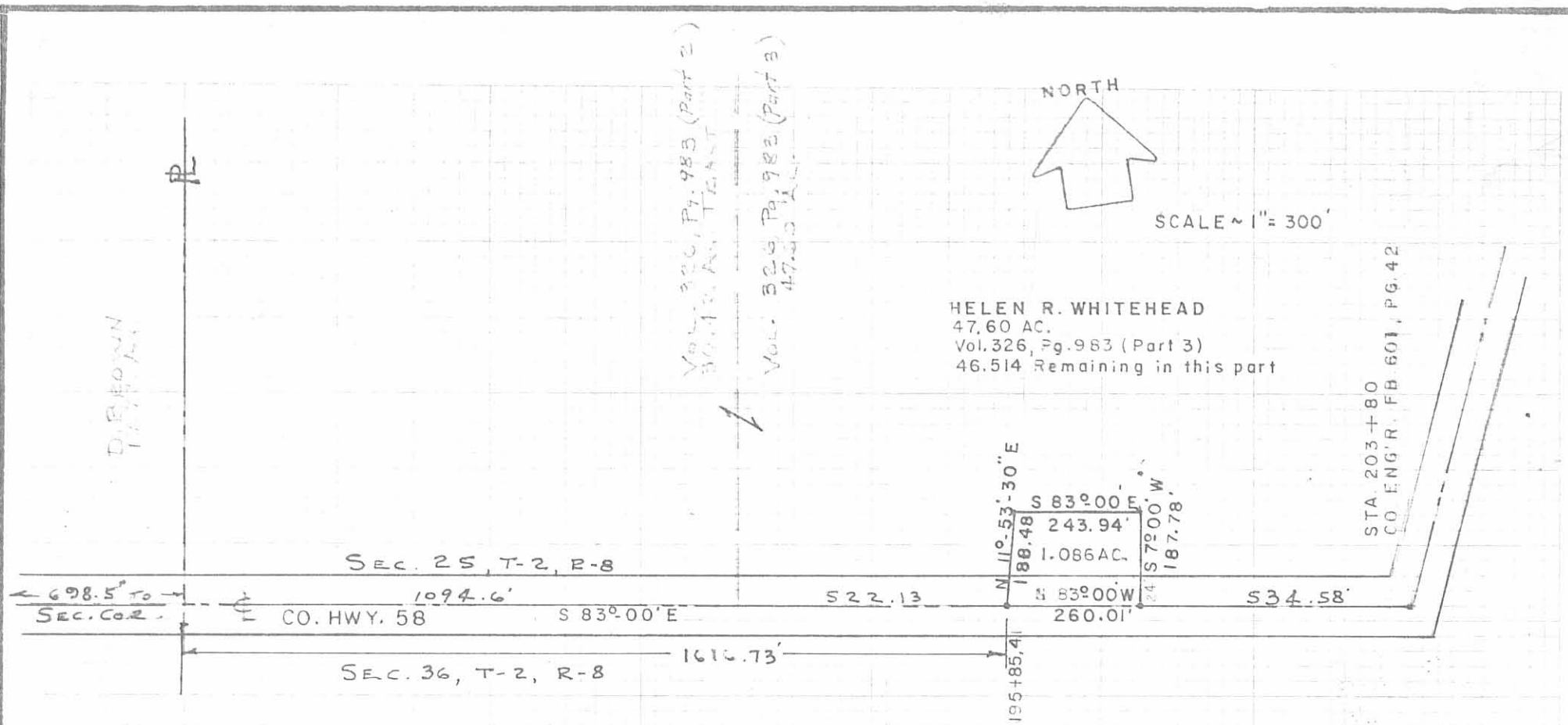
Surveyed by:

*Clayton M. Lee*

Clayton M. Lee  
Reg. Surveyor No. 6181  
9-30-80



INDEXED ON MAP  
6506 2D



SCALE ~ 1" = 300'

HELEN R. WHITEHEAD  
 47.60 AC.  
 Vol. 326, Pg. 983 (Part 3)  
 46.514 Remaining in this part

STA. 203+80  
 CO. ENG'R. FB 601, PG. 42

SURVEY OF 1.086 ACRE OUT OF THE HELEN WHITE HEAD  
 47.60 ACRE TRACT (Vol. 326, Pg. 983, Remainder of part 3)  
 SEC. 25, T-2, R-8, BLOOMFIELD TOWNSHIP,  
 LOGAN COUNTY, OHIO

By: *Clayton M. Lee*

Clayton M. Lee  
 Reg. Surveyor 6181  
 9-30-80



6506 2P

INDEXED ON MAP

LEE SURVEYING & MAPPING CO.  
 855 E. Sandusky Ave.  
 BELLEFONTAINE, OHIO 43311  
 (513) 593-5780

L-755-5