

Eoad No. 23 Miami, Pleasant, & Bloomfield Twp

25+00 P.O.T. Set RR Spike, 3' from edge.

FB 708

21+26.55 Fd. stone w. brick 1.5' deep, set hub on stone.  
No Angle

20+00 P.O.T. RR Spike set.

15+00 P.O.T. Set RR Spike, 1' from West edge.

10+00 P.O.T. hhd. hub, off West edge pavement.

8+49.48 P.O.T. Set hhd. hub, on West edge pavement  
military crest of ridge.

5+00 P.O.T. Set hhd. hub, on West edge pavement.

0+00 Fd. stone 1' deep, See F.B. 589, pg. 59  
set hub on stone.

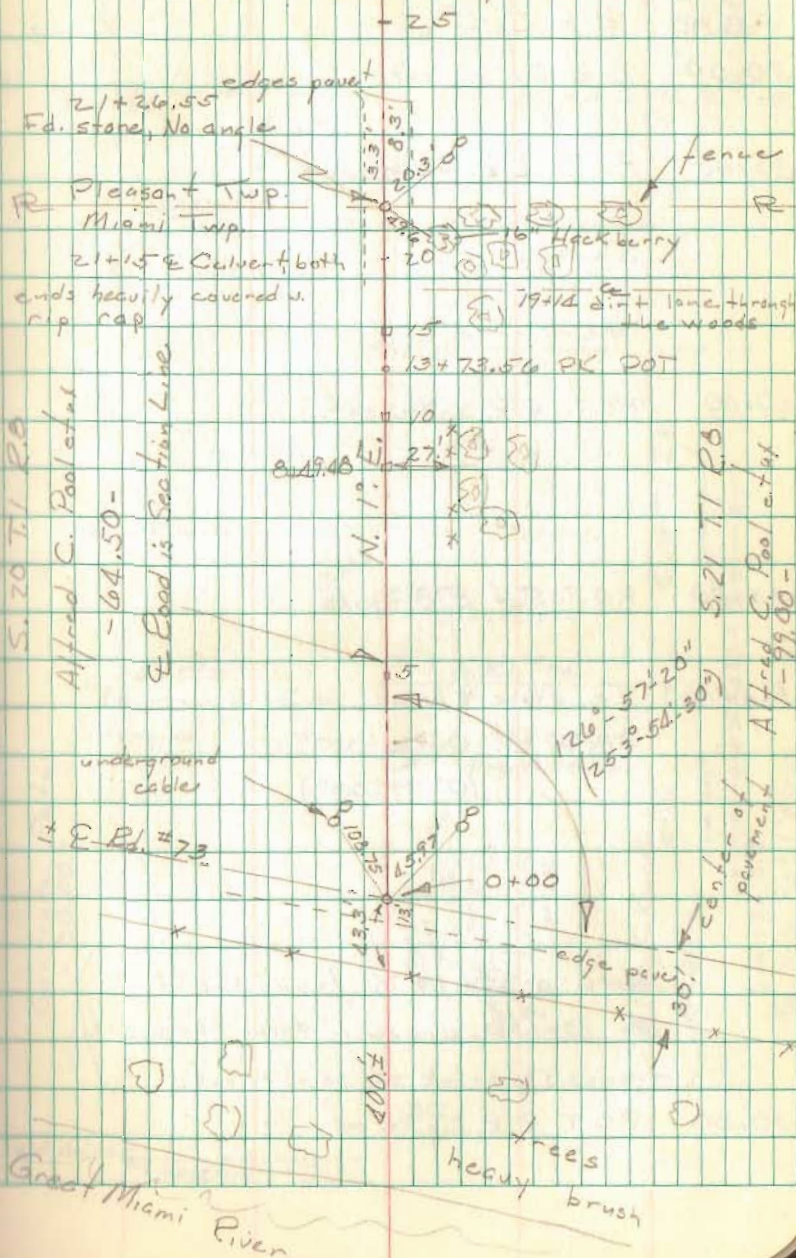
6672

INDEXED ON MAP

Nichols  
Brooks Prall  
Henry X

18 August 1970  
85° Sunny  
Gurley

10



FB 708

Ed. No. 218 Pleasant Twp. cont.

55+00 R.R. Spike set

50+00 R.R. Spike set

45+00 P.O.T. R.R. Spike set

40+00 P.O.T. R.R. Spike set.

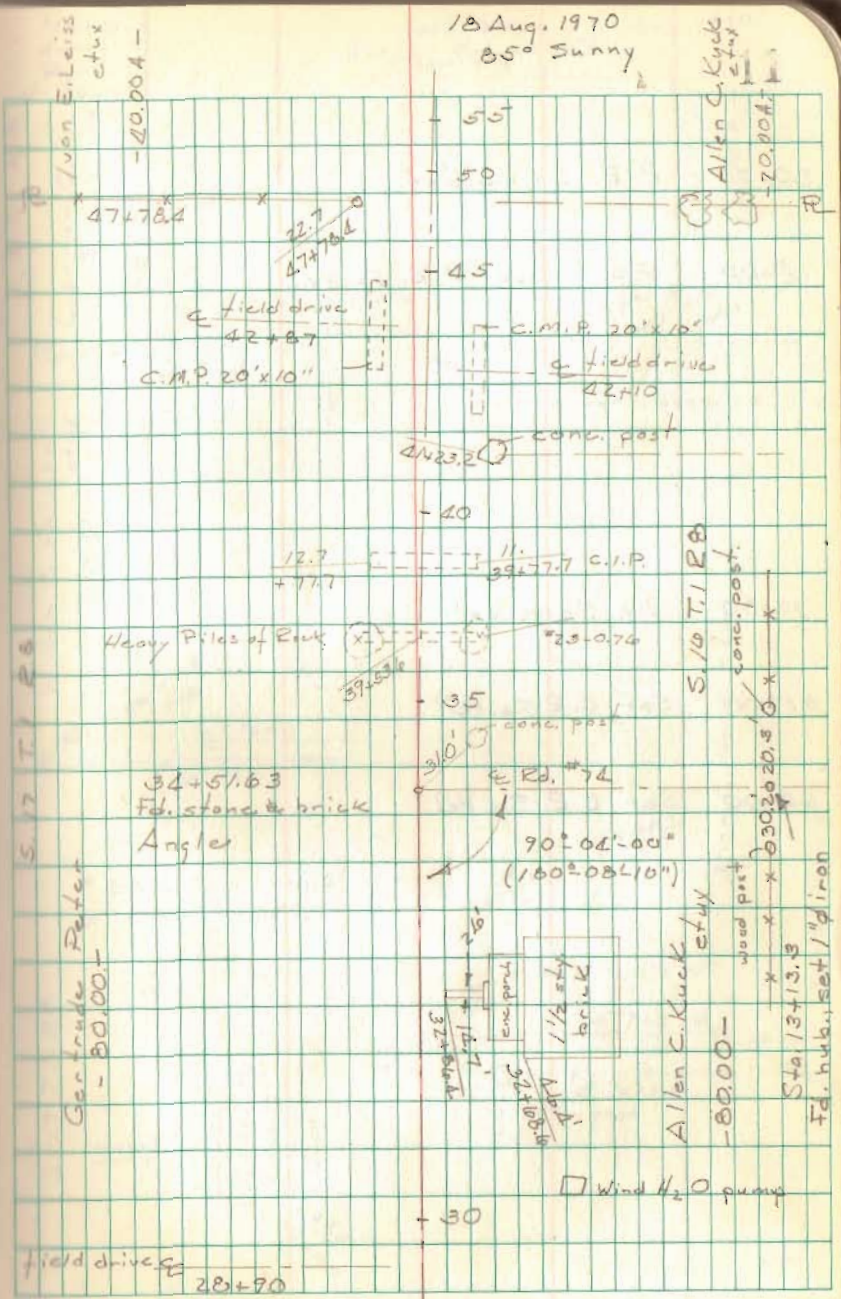
35+00 P.O.T. Set R.R. Spike

34+51.63 Fd. stone & brick  
 Angle Pt.  $0^{\circ}04'30''$   
 ( $0^{\circ}09'00''$ )

(Note: on Rd. No. 74 found hub of sta. 13+13.3, drove 1" pipe through it, traces of brick at point of hub.)

30+00 P.O.T. R.R. Spike set

18 Aug. 1970  
 85° Sunny



Gertrude Peter  
 - 80.00 -

Allen C. Kuck  
 et ux  
 - 80.00 -

Sta. 13+13.3  
 Fd. hub, set 1" pipe

Wind H<sub>2</sub>O pump

FB 708

Ed. No. 23 cont.

80+00 R.R. Spike set.

75+00 P.O.T. set R.R. Spike

70+00 R.R. Spike set.

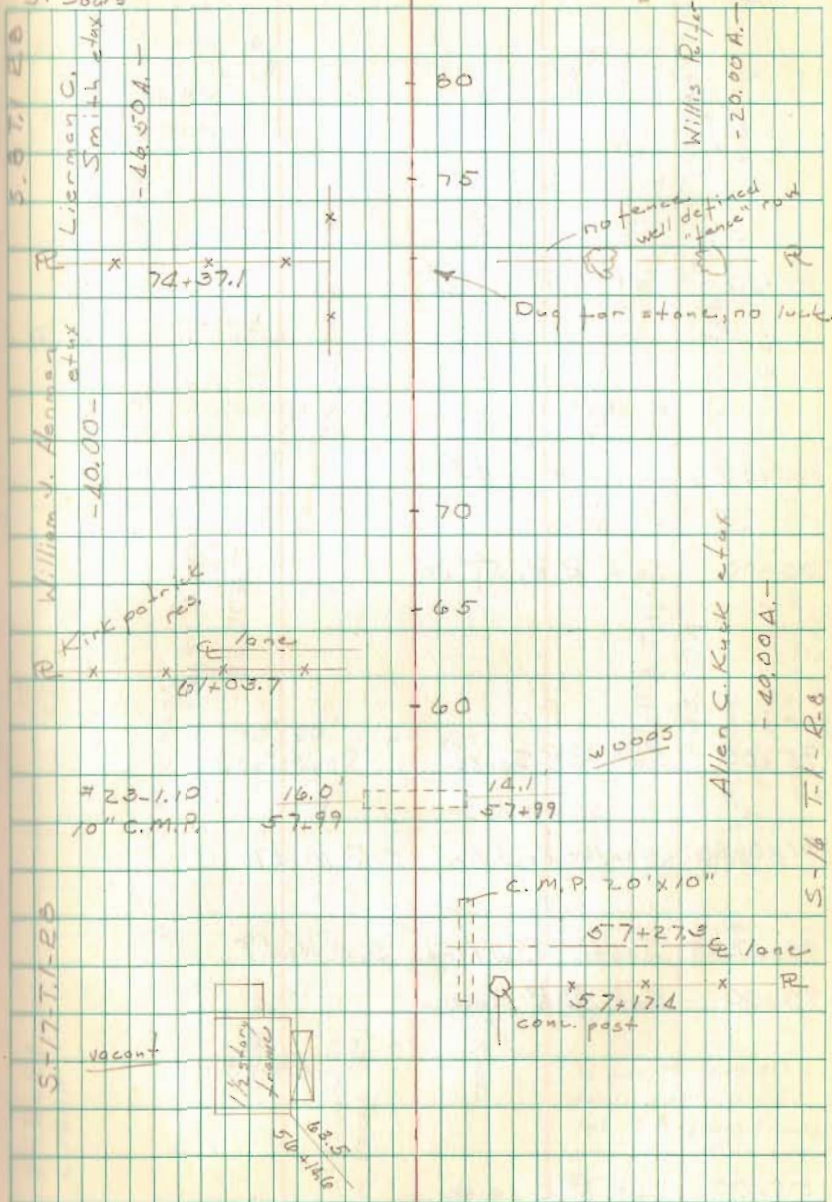
65+00 Set R.R. Spike

60+00 Set R.R. Spike

Nichols  
Henry X  
Droll  
J. Sours

Sta. 6500 - 19 Aug. 1970  
Gurley

12



Rd. No. 23 cont.

FB 708

110+00 Set R.R. Spike

105+00 Set R.R. Spike

100+00 Set R.R. Spike

95+00 Set R.R. Spike

91+06.98 North R/W line S.R. No. 47

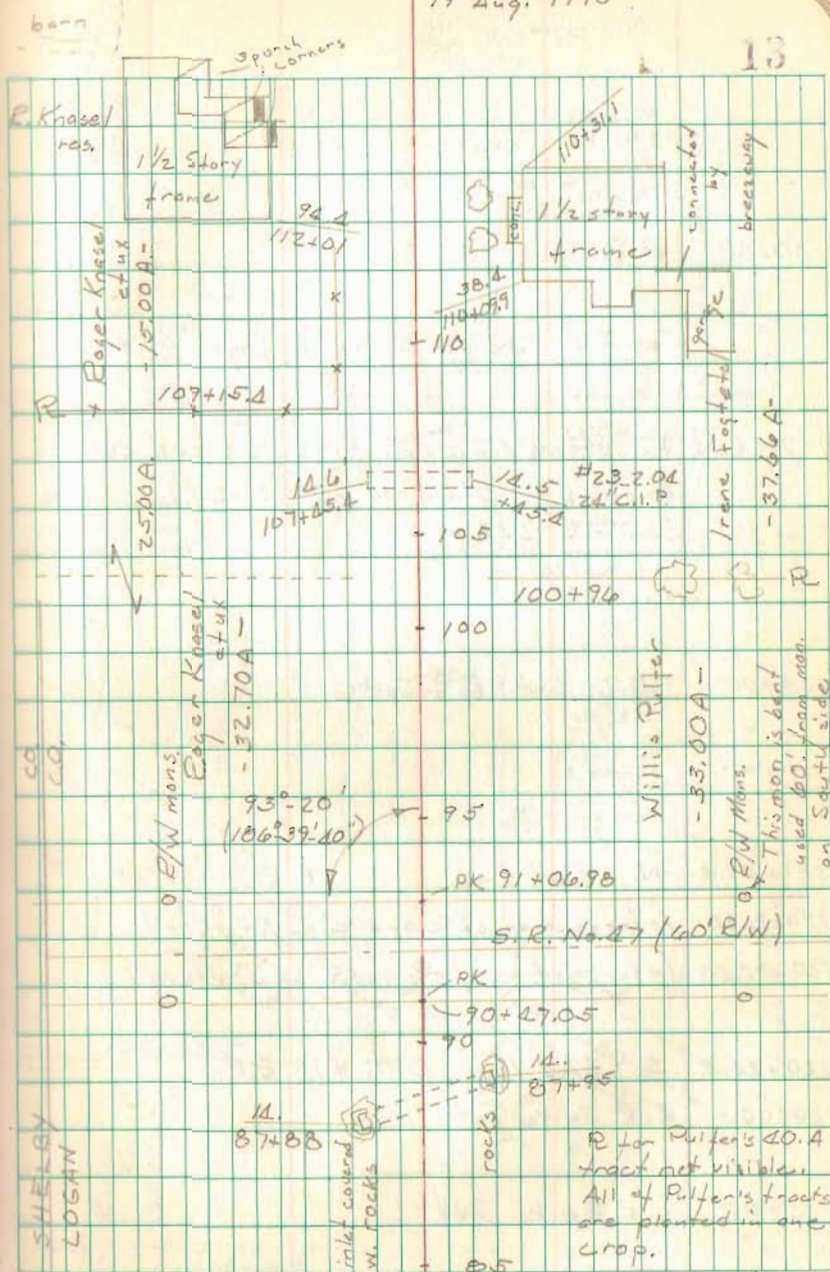
90+47.05 South R/W line S.R. No. 47

90+00 Set R.R. Spike

85+00 Set R.R. Spike

19 Aug. 1970

13





Ed. 23 cont.

FB 708

155+00 R.R. Spike set.

153+97.06 Fd. stone & brick, 3' deep See F.B. 575, pg 62  
Angle Pt.  $0^{\circ}00'40''$  (angle turned 20° E)  
( $0^{\circ}01'20''$ )

150+00 R.R. Spike set

145+00 R.R. Spike set

140+00 R.R. Spike set

135+00 R.R. Spike set

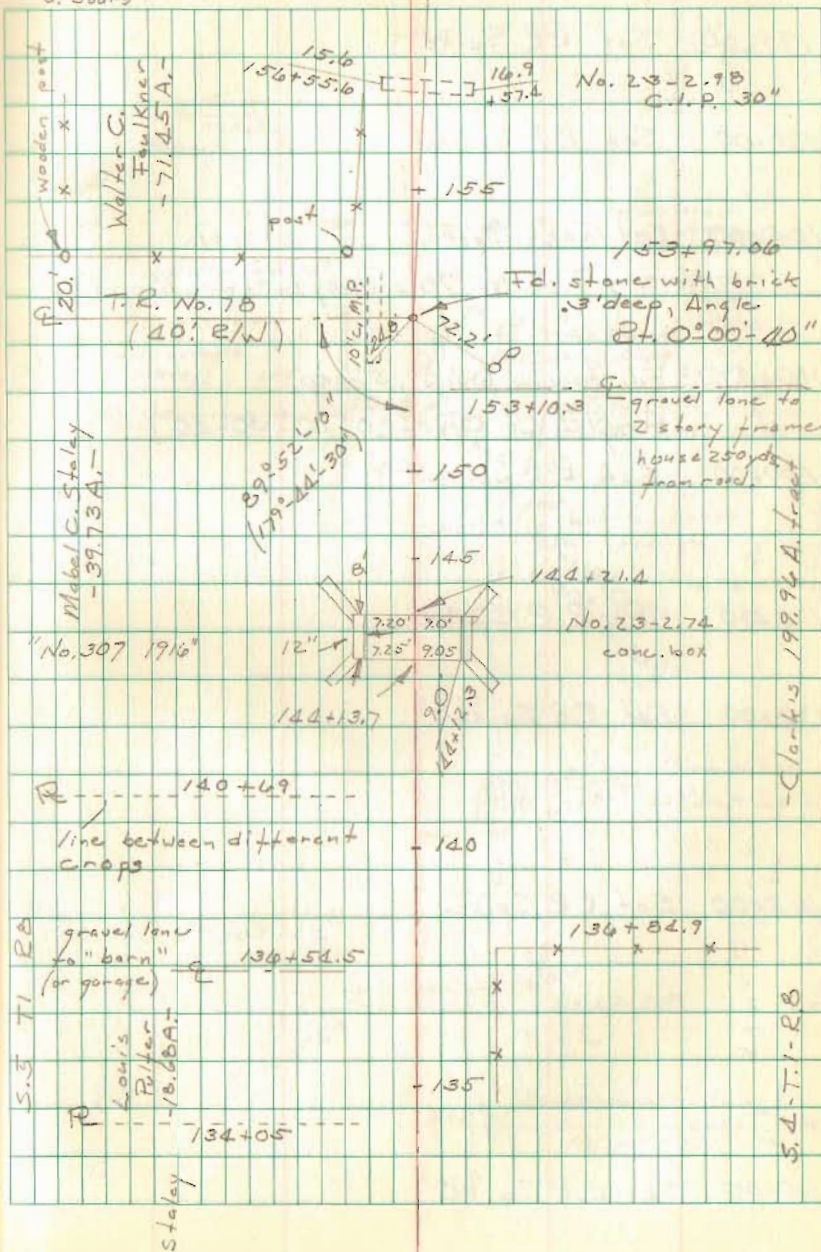
Nichols  
S. Henry F  
D. Prall  
V. Jours

20 Aug. 1970

80°

rain @ 10:15.

15



FB 708

Rd. No. 23 Pleasant Twp.

195+00 Set R.R Spike

190+00 Set R.R Spike

185+00 Set R.R Spike

Note: (T. R. No. 78 survey in F.B. 575 pg. 72)

180+49.73 Fd. stone w. brick .5' deep.

Angle Lt.  $0^{\circ}15'20''$  ( $0^{\circ}30'40''$ )

180+00 Set R.R Spike

175+00 Set R.R Spike

170+00 Set R.R Spike

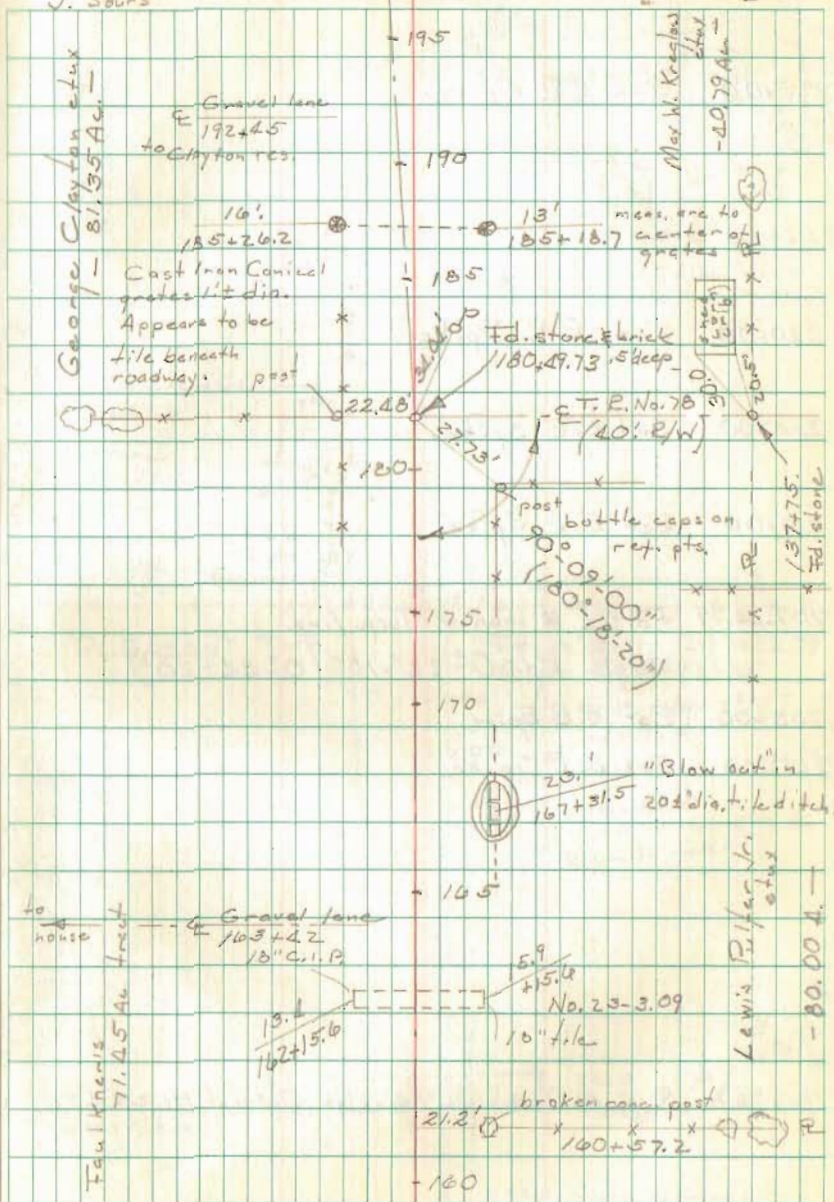
165+00 Set R.R Spike

160+00 Set R.R Spike

Nichols  
S. Henry T  
D. Prall  
V. Sours

20 Aug 1970, 180+49.73 on 21 Aug.  
pm 80° overcast

16



Rd. No. 23 cont. Pleasant & Bloomfield

FB 708

225+00 Set R.R. Spike

220+00 Set R.R. Spike

215+00 Set R.R. Spike

210+00 Set R.R. Spike

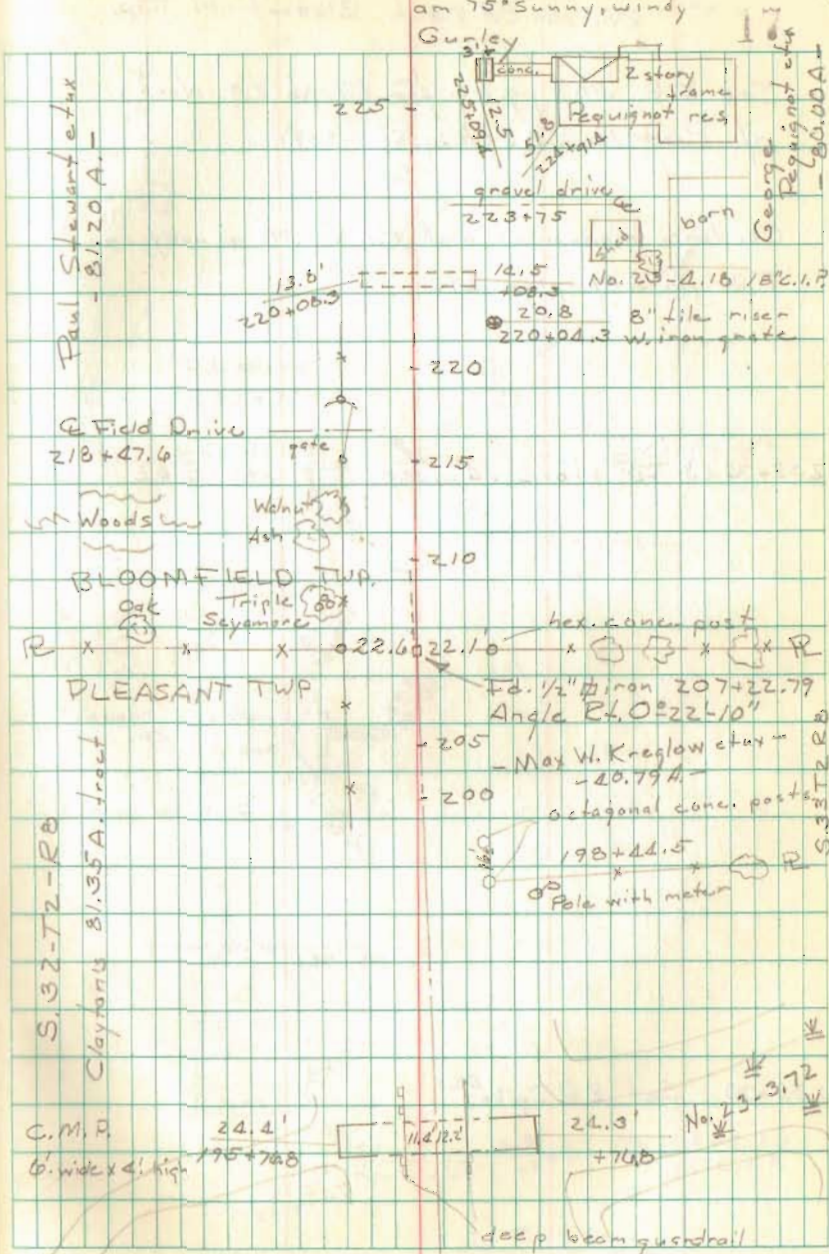
207+22.79 Fd. 1/2" # iron. Twp. line  
Angle R.L.  $0^{\circ}22'-10''$  ( $0^{\circ}44'-20''$ )

205+00 Set R.R. Spike

200+00 Set R.R. Spike

195+76.8 E.C.M.P. 6' wide x 4' high, Culvert No. 23-3.72

21 Aug. 1970  
at 75° Sunny, windy





FB 708

Rd. No. 23 cont. Bloomfield Twp.

See F.B. 589 pg. 42 for Rd. No. 23 North  
of Road No. 58. (August 1939)

Co. line monument and Rd. No. 58 survey in  
F.B. No. 601 page 29.

233+74.43 Fd. stone .4' deep. F.B. 589 pg. 42

230+00 Set RR Spite

21 Aug. 1970  
pm 7:50 Sunny, windy  
Gurley

18

