

FB 708

T.R. 80
Bloomfield TWP

R/W WIDTH = 30' Bd. Rec. 1 pg. 37

A = Stone St. 182+79.2 - Did not dig for
Stone - located St. from R/W Mark,
ft 1.5' W. of Fence as indicated in
F.B. 518 pg. 24

Set Cpd. P-K nail on Φ at
St. 182+79.2

B = $\frac{3}{4}$ " Bar found See F.B. 572, pg. 27

Meas. from A, South 2664.7 B2C; 330
Meas. from B, east 2672.3 " "

C = 1" Φ BAR Found 2663.0 from A &
2671.4 from B

NORTH R/W LINE STAKED FROM
"B", east 1900' FOR LOGAN COUNTY
CO-OP. - Staked 15' NORTH OF LINE
B-C

C.P. 21

0+00

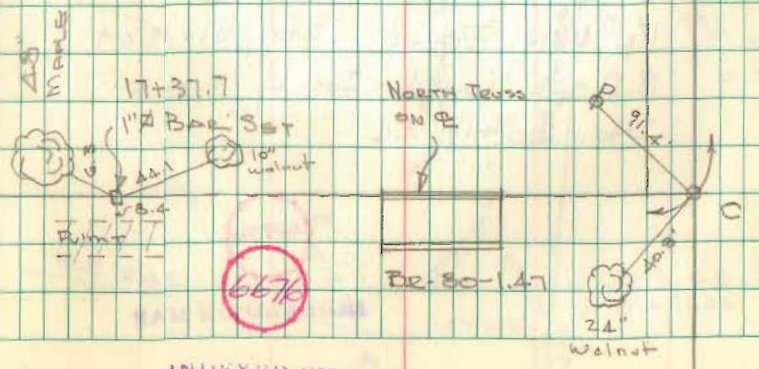
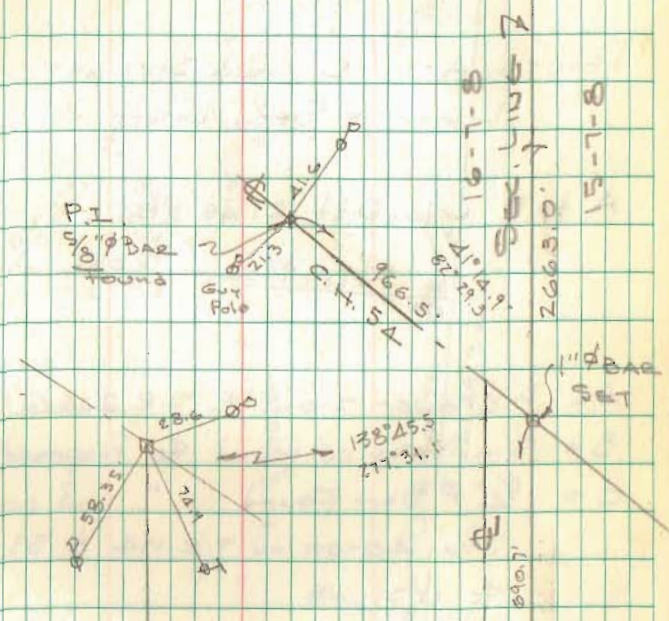
T.R. 80 1/4 Sec. Line 7
2672.4



Dobson - Goodin
Kim - Nichols

12/10/71
50°
RAIN - WINDY 23

S.R. 274



INDEXED ON MAP

FB 713

T.R. 80
Bloomfield Twp.
Logan Co. Ohio

79+45.20 - P.I. - Nothing set
89°-35'-20" Lt.

72+20.87 - P.O.T. - Fd. 5/8" dia. iron
bar - S.E. corner 1.98 Ac. tract
Ref: R-4807

49+78.47 - P.O.T. - Fd. 3/4" dia. iron bar -
N.E. corner 5 Ac. tract
Ref: R-5531

49+46.60 - P.O.T. - Fd. 3/4" dia. iron bar -
Ref: R-4807

49+36.55 - P.O.T. - Fd. 5/8" dia. iron bar

46+44.87 - P.O.T. - Fd. 3/4" dia. iron bar

53+09.02 - P.I. - Fd. 1" square
iron bar - 1/4 section corner -
Ref: F.Bk. # 598, pg. 79

F.Bk. # 572, pg. 27

F.Bk. # 708, pg. 23, pt. B

Bk. C, pg. 330, pt. D.

R-7871

0°-04'-33" Rt.

INDEXED ON MAP

INDEXED ON MAP

6676

Simmons
Dappert
Dill

27 Oct. 2010

