

Lee Surveying and Mapping Co.



Farm Surveys • Lot Surveys • Topography • Subdivisions • Construction Layout

855 EAST SANDUSKY AVENUE
BELLEFONTAINE, OHIO 43311

(513) 593-5780

CLAYTON M. LEE, P.S.
JEFFREY I. LEE, P.S.

CENTERS (17.913 ACRES)

Lying in Sections 25 and 36, T-7, R-7, Bloomfield Township, Logan County, Ohio.

Being out of that 76.05 acre tract in the name of Centers as deeded and described in Volume 338, Page 992 of the Logan County Records of Deeds and being more particularly described as follows:

Beginning at a railroad spike set on the center-line of Township Road 23 at the northeast corner of the Samuel Copeland 20.56 acre tract (Volume 390, Page 847) and also being a corner in the grantor's east line.

THENCE, with the north line of said 20.56 acre tract, N 89°-05'-40" W, a distance of 1119.98 feet to a 5/8" iron rod set at the northwest corner of said 20.56 acre tract.

THENCE, with the west line of the said 20.56 acre tract, extended, N 1°-05'-25" E, a distance of 861.35 feet to a 5/8" iron rod set on the grantor's north line.

THENCE, with said north line, S 88°-05'-35" E, a distance of 649.69 feet to a 5/8" iron rod set at the northwest corner of the Faulder 4.00 acre tract (O.R. 37, Page 2).

THENCE, with the boundary of said 4.00 acre tract, the following 2 bearings and distances:
S 1° -09'-10" W, 373.85 feet to an iron rod (found).

S 89°-12'-30" E, 472.10 feet to an iron rod found on the center-line of Township Road 23.

THENCE, with said center-line, S 1°-15' W, a distance of 477.09 feet to the point of beginning.

Containing 17.913 acres, of which 15.219 acres are in Section 36, T-7, R-7 and 2.694 acres are in Section 25, T-7, R-7.

This description prepared from an actual field survey.

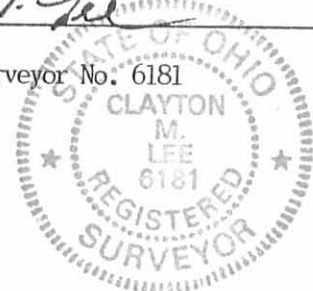
Basis for bearings = South line of Section 36, N 89°-23' W.

Prepared by:

Clayton M. Lee

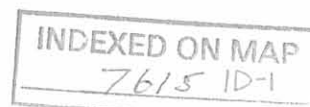
Registered Professional Surveyor No. 6181

March 25, 1987



ORIGINAL STAMP IN GREEN

L-1550



Lee Surveying and Mapping Co.



Farm Surveys • Lot Surveys • Topography • Subdivisions • Construction Layout

855 EAST SANDUSKY AVENUE
BELLEFONTAINE, OHIO 43311

(513) 593-5780

CLAYTON M. LEE, P.S.
JEFFREY I. LEE, P.S.

CENTERS (41.551 ACRES)

Lying in Section 25 and Section 36, T-7, R-7 and Section 21, T-2, R-8, Bloomfield Township, Logan county, Ohio.

Being out of that 75.05 acre tract in the name of Centers as deeded and described in Volume 338, Page 992 of the Logan County Records of Deeds and being more particularly described as follows:

Beginning at a 'PK' nail over a stone found on the center-line of County Highway 59, also being on The Greenville Treaty Line and marking the southwest corner of said 75.05 acres and being on the west line of Logan County.

THENCE, with the west line of Logan County, N 0°-47'-50" E, a distance of 1097.34 feet to the center of Rum Creek. THE TRUE POINT OF BEGINNING.

THENCE, continuing with the west line of Logan County, N 0°-47'-50" E, a distance of 661.20 feet to a county line stone monument found at the line between said Sections 25 and 36.

THENCE, still continuing with the west line of Logan County, N 2°-02'-20" E, a distance of 185.64 feet to a 2" iron pipe found at grantor's northwest corner.

THENCE, with the grantor's north line, S 88°-05'-35" E, a distance of 1304.99 feet to a 5/8" iron rod.

THENCE, S 1°-05'-25" W, a distance of 1899.40 feet to a railroad spike set on the south line of Section 21 in the roadway of County Highway 59.

THENCE, with the said south line of Section 21, N 89°-23' W, a distance of 259.64 feet to a railroad spike.

THENCE, N 0°-24' E, a distance of 196.02 feet to a 5/8" iron rod set at an angle in an east-west fence.

THENCE, continuing into grantor's land, the following 4 bearings and distances:

N 34°-15' W, a distance of 191.69 feet to a 5/8" iron rod.

N 78°-56'-45" W, a distance of 46.98 feet to a 5/8" iron rod.

N 35°-25'-10" W, a distance of 206.23 feet to a 5/8" iron rod.

N 86°-58'-55" W, a distance of 68.03 feet to a point in the center of Rum Creek.

THENCE, more or less, with the center-line of Rum Creek, the following 4 bearings and distances:

N 28°-47'-30" W, 103.30 feet.

N 72°-53'-15" W, 353.67 feet.

N 26°-02'-10" W, 355.13 feet.

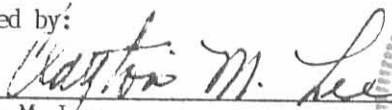
N 72°-31'-35" W, 147.26 feet to the point of beginning.

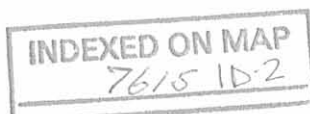
Containing 41.551 acres, of which 35.248 acres are in Section 36, T-7, R-7; 5.508 acres are in Section 25, T-7, R-7 and 0.795 acre is in Section 21, T-2, R-8.

This description prepared from an actual field survey.

Basis for bearings = South line of Section 36, N 89°-23' W.

Prepared by:


Clayton M. Lee
Registered Professional Surveyor No. 6181
March 25, 1987



ORIGINAL STAMP IN GREEN

Lee Surveying and Mapping Co.



Farm Surveys • Lot Surveys • Topography • Subdivisions • Construction Layout

855 EAST SANDUSKY AVENUE
BELLEFONTAINE, OHIO 43311

(513) 593-5780

CLAYTON M. LEE, P.S.
JEFFREY I. LEE, P.S.

CENTERS (10.753 ACRES)

Lying in Section 36, T-7, R-7; Section 20, T-2, R-8; Section 21, T-2, R-8, Bloomfield Township, Logan County, Ohio.

Being out of that 76.03 acre tract in the name of Centers as deeded and described in Volume 338, Page 992 of the Logan County Records of Deeds and being more particularly described as follows:

Beginning at a 'PK' nail over a stone found on the center-line of County Highway 59, also being on the Greenville Treaty Line and marking the southwest corner of the said 75.05 acres and being on the west line of Logan County.

THENCE, with the county line, N 0°-47'-50" E, a distance of 1097.34 feet to the center of Rum Creek, passing a county line stone monument at 25.00 feet.

THENCE, more or less, with the center of Rum Creek, the following three bearings and distances:

S 72°-31'-35" E, a distance of 147.26 feet.

S 26°-02'-10" E, a distance of 355.13 feet.

S 72°-53'-15" E, a distance of 297.69 feet.

THENCE, S 29°-58' W, a distance of 84.21 feet.

THENCE, with a cultivation line, S 1°-47'55" E, a distance of 564.41 feet to a railroad spike set on the south line of Section 21, near the center-line of County Highway 59.

THENCE, with the south lines of Sections 21 and 20, N 89°-23' W, a distance of 454.66 feet to an iron rod found at the intersection of The Greenville Treaty Line.

THENCE, with the Greenville Treaty Line, S 83°-11'-10" W, a distance of 117.99 feet to the point of beginning.

Containing 10.753 acres, of which 10.455 acres are in Section 36, T-7, R-7; 0.264 acre is in Section 20, T-2, R-8 and 0.034 acre is in Section 21, T-2, R-8,

This description prepared from an actual field survey.
Basis for bearings = South line of Section 36, N 89°-23' W.

Prepared by:

Clayton M. Lee

Registered professional Surveyor No. 6181

March 25, 1987

Revised March 31, 1987



ORIGINAL FILED IN 157

INDEXED ON MAP
7615 1D-3

Lee Surveying and Mapping Co.



Farm Surveys • Lot Surveys • Topography • Subdivisions • Construction Layout

855 EAST SANDUSKY AVENUE
BELLEFONTAINE, OHIO 43311

(513) 593-5780

CLAYTON M. LEE, P.S.
JEFFREY I. LEE, P.S.

CENTERS (5.001 ACRE HOUSE LOT)

Lying in Section 36, T-7, R-7, and Section 21, T-2, R-8, Bloomfield Township, Logan County, Ohio.

Being out of that 76.05 acre tract in the name of Centers as deeded and described in Volume 338, Page 992 of the Logan County Records of Deeds and being more particularly described as follows:

Beginning at a 'PK' nail over a stone found on the center-line of County Highway 59, also being on The Greenville Treaty Line and marking the southwest corner of the said 75.05 acres and being on the west line of Logan County.

THENCE, with The Greenville Treaty Line, N 83°-11'-10" E, 117.99 feet to an iron rod at the west corner of Section 20.

THENCE, with the south line of Sections 20 and 21, S 89°-23' E, 454.66 feet to a railroad spike (Set). THE TRUE POINT OF BEGINNING.

THENCE, with a cultivation line, N 1°-47'-55" W, a distance of 564.41 feet.

THENCE, N 29°-58' E, a distance of 84.21 feet to the center of Rum Creek.

THENCE, more or less, with the center-line of Rum Creek, the following 2 bearings and distances:
S 72°-53'-15" E, a distance of 55.98 feet.
S 28°-47'-30" E, a distance of 103.30 feet.

THENCE, leaving the creek, S 86°-58'-55" E, a distance of 68.03 feet to a 5/8" iron rod set by a fence line.

THENCE, with said fence line, S 35°-25'-10" E, a distance of 206.23 feet to a 5/8" iron rod.

THENCE, S 78°-56'-45" E, a distance of 46.98 feet to a 5/8" iron rod.

THENCE, S 34°-15' E, a distance of 191.69 feet to a 5/8" iron rod set at an angle in an east-west fence.

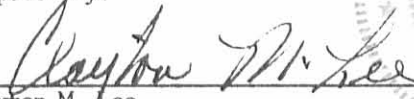
THENCE, S 0°-24' W, a distance of 196.02 feet to a railroad spike set on the south line of Section 21 in the roadway of County Highway 59.

THENCE, with said section line, N 89°-23' W, a distance of 467.71 feet to the point of beginning.

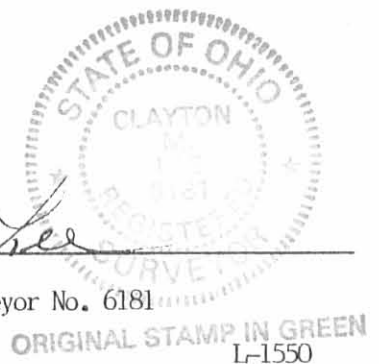
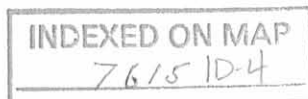
Containing 5.001 acres, of which 4.066 acres are in Section 36, T-7, R-7 and 0.935 acre is in Section 21, T-2, R-8.

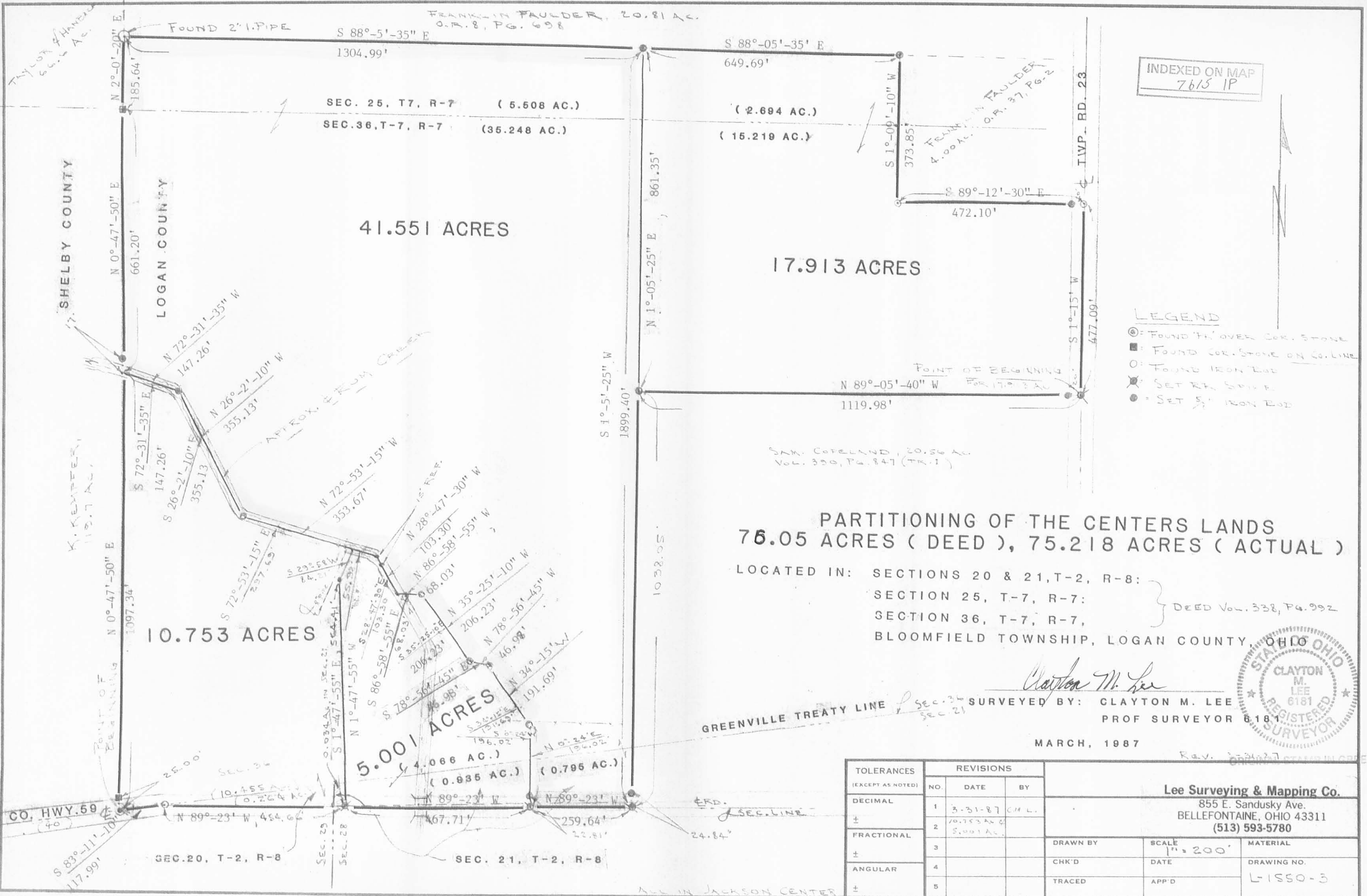
This description prepared from an actual field survey.
Basis for bearings = South line of Section 36, N 89°-23' W,

Prepared By:


Clayton M. Lee
Registered Professional Surveyor No. 6181
March 25, 1987

Revised March 31, 1987





INDEXED ON MAP
7615 IP

- LEGEND**
- ⊙: FOUND 7\"/>
 - : FOUND COR. STONE ON CO. LINE
 - : FOUND IRON ROD
 - ✕: SET RT. SPIKE
 - : SET S. IRON ROD

PARTITIONING OF THE CENTERS LANDS
75.05 ACRES (DEED), 75.218 ACRES (ACTUAL)
 LOCATED IN: SECTIONS 20 & 21, T-2, R-8:
 SECTION 25, T-7, R-7: } DEED Vol. 338, Pg. 992
 SECTION 36, T-7, R-7,
 BLOOMFIELD TOWNSHIP, LOGAN COUNTY, OHIO

Clayton M. Lee

SURVEYED BY: CLAYTON M. LEE
 PROF SURVEYOR 6181



MARCH, 1987

| TOLERANCES (EXCEPT AS NOTED) | REVISIONS | | | DRAWN BY | SCALE 1" = 200' | MATERIAL |
|---------------------------------|-----------|---------|-------|----------|--------------------|-------------|
| | NO. | DATE | BY | | | |
| DECIMAL | 1 | 3-31-87 | CH L. | CHK'D | DATE | DRAWING NO. |
| ± | 2 | 10-7-87 | CL L. | | | |
| FRACTIONAL | 3 | | | TRACED | APP'D | L-1550-3 |
| ± | 4 | | | | | |
| ANGULAR | 5 | | | | | |
| ± | | | | | | |

Lee Surveying & Mapping Co.
 855 E. Sandusky Ave.
 BELLEFONTAINE, OHIO 43311
 (513) 593-5780