

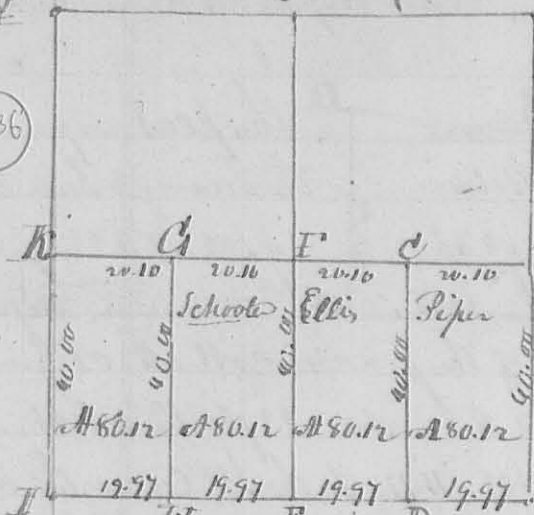
N^o 235

Oct. 1835
S 85 1/2 W R 82

1835

207

336



The lines of the survey, bear as follows -
 the lines running North, bear N 4 W. and
 those running West bear S 85 1/2 W. length of
 the lines, as marked on the plat, for the con-
 tents see also the plat. - 1

Description of corners -

A. S E corner of the section. B. Original
 bearing trees. at Gr. Corner, at C Back
 11 1/2 P 128 E 22 links, and Back 8 1/2 P 128 W
 22 links, at letter D. Back 8 1/2 P. Corner tree. at E. Back 22 1/2 P 133 W
 24 links. Red Oak 18 1/2 P 533 W 38 links, F. Gum 18 1/2 P 13 W 9 links, Iron
 wood 6 1/2 P 531 W 31 links, at G. Ash 18 1/2 P 585 1/2 W 26 links, Back 10 1/2 P
 531 E 34 links, at H. Back 15 1/2 P 124 W 18 links, E. Elm 18 1/2 P 123 E 31 links
 K. an Elm 48 1/2 P 17 E 22. an Elm 22 1/2 P 539 E 31 H S W corner of the
 section.

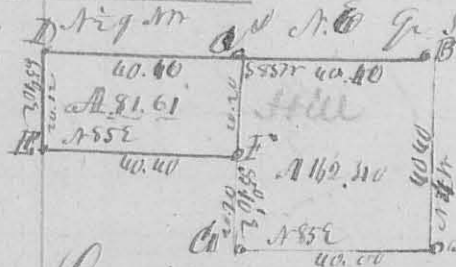
Oct: 23rd 1835

San Hopkins Survey & Co

N^o 256 Surveyed Oct: 24th 1834 for old Mr. Ashbrook, the North half of
 the West half of 1/4 Gr. of S 4 1/2 R 82 Beginning at the N W corner in
 center of the west boundary, at a sugar 6 1/2 P from 14 1/2 P. Back 15 1/2 P
 N 74 E 57 links, then S 85 E 20 chains, 66 links to a Back 10 1/2 P 130 E
 26, and Back 18 1/2 P 133 W 16 1/2, then S 6 E 19 ch 88 links to a Hickory
 12 1/2 P N 79 E 12 links, Red Oak 20 1/2 P N 65 W 12 links then S 85 W 20
 ch. links to a Bar Oak 20 1/2 P N 27 E 13 links, Ash 15 1/2 P N 79 E 13 links
 then S 4 W 19 ch. 88 links to the beginning containing 39 3/4
 acres

San Hopkins, S. C. Surveyor

N^o 257



This plat represents the survey of 1/4 of 1/4 Gr. of
 S 4 1/2 R 82, and 1/4 Gr. of 1/4 section for John
 Hill for corner & distance, see the plat

Description of corners A. orig. gr. corner on the East-line of the section
 a Back 5 1/2 P 185 W 25 links, Water Back 6 1/2 P 184 E 6. C. no corner
 made B. Sect corner Back 17 1/2 P 189 W 10. D and Swamp on Ash 18 1/2 P
 N 79 E 26, D Back 12 1/2 P 147 W 32 1/2 Back 10 1/2 P 135 E 16 links, H. Ash 15
 1/2 P N 20 W 29 links, Sugar 16 1/2 P 580 W 10 links, F. Gum 15 1/2 P 583 W 22, Back 15 1/2 P
 533 W 4 1/2

Over