

Oct 1835

293

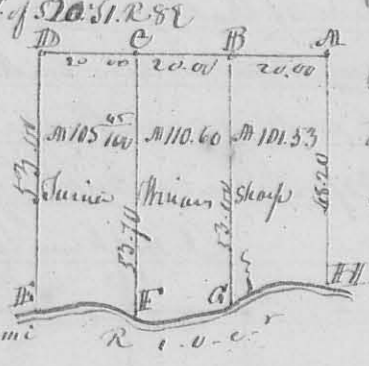
N^o 287 Surveyed Oct. 16 1835 for Philip Le dricks part of the S. E. q^r of S 22 S. R 14 M. R. D as follows. Beginning at the NW corner of said Quarter Section a Hickory 15th N 95^o E 36 Links, Bur. Oak 18th N 35^o W 57 Links, then W East 1.52 to R. Oak 12th W 21 Links, and E W 10th W 65^o Links, then S^o W 39.25 crossing the creek to Hickory 12th S 8^o E 11 Links, & Hickory 8th N 23^o W 30 Links, then West 1.52 to the SW Corner of said Corner, orig. witness trees, then N^o W 39.25 crossing creek at about 8 p.m. to the beginning containing six Acres.

Oct 16 1835

Dan Hopkins Sur. L. C.

N^o 289

Part of S 20 S. R 8 E



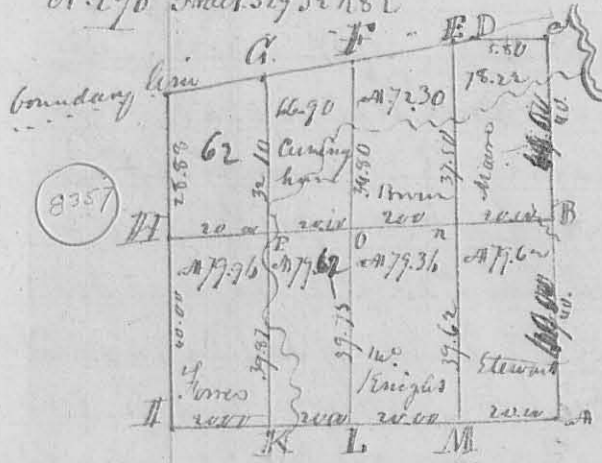
Divided tract S 20 S. R 8 E between James Minam & Shoop as shown by the plat. Beginning at B. Corner between Martin & Grove on the South line of S 16. at an old 3rd N 45^o W 32^o Ch 2nd S 7^o W 11^o Links, then S 5^o E 53 Ch to the River see letter a, a dyc a map 1st S 5^o E 15 Links, Hackberry 24th N 15^o W 68^o Ch then began at C. Orig^l q^r. Post then S 5^o E 53 Ch. 70 Links, to a stone at H. then began at D Corner on South line of S 16. between Grove, Thane a pole 15th N 11^o W 14 Links, & Hickory, then S 5^o E 33 Ch. to River at G a Log 15th West 10 Links Buck Eye 8th N 37^o W 10 Links.

Oct. 1835

Dan Hopkins L. C. Surveyor

N^o 290

Tract S 29 S. R 8 E



This Plat represents the Survey Sub. division of S 29 S. R 8 E. between the individuals whose names are written on the map - Corner of the line N 37^o W. boundary line runs from the East by 8th W. the description of corners as follows. at A Section Corner B. Beach 22th N 35^o W 6^o Links. Beach 18th S 6^o E 37 Links. C Sect. corner D. orig^l Corner a boundary (C. L. cut down was the corner tree) E Sugar 12th S 5^o E 55 Links, Ironwood 8th S 10^o E 16^o 8^o Links, F Sugar 18th S 5^o E 33 Buck Eye 8th N 37^o W 33 Links, G Beach 12th N 37^o W 13^o Links. Beach 5th S 8^o E 6^o Links H orig^l q^r corner I Sect. corner. K Ch & Hickory from one root 12th N 37^o W 8^o Links 16th N 34^o E 25^o Links. at the

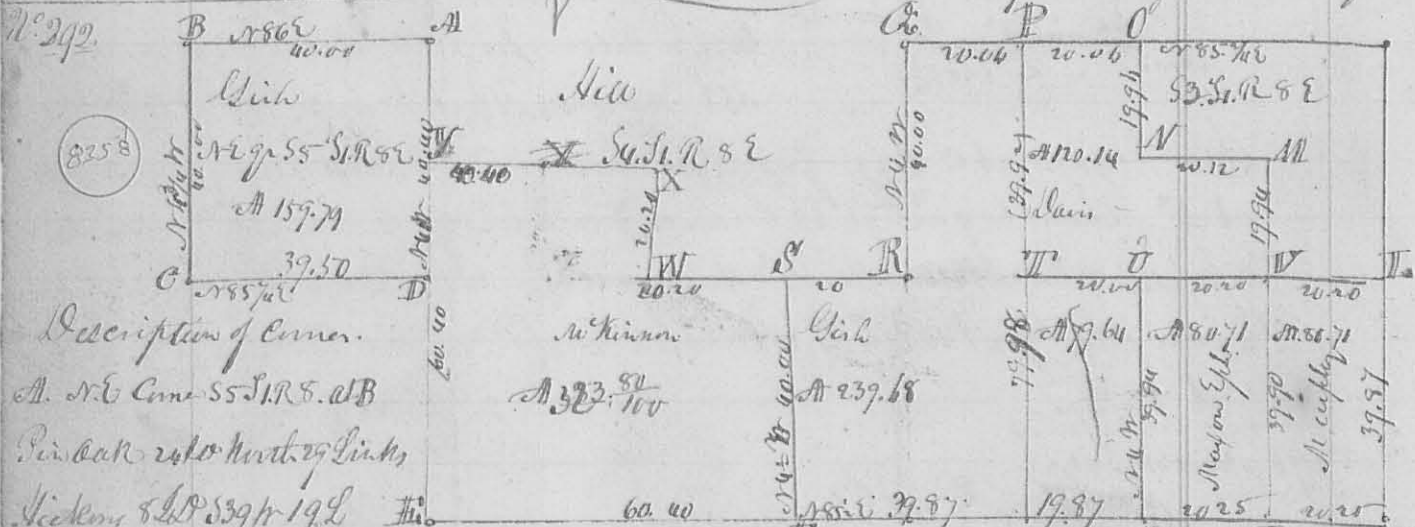
Orig. gr. Post on South line of the section M Beech 20 1/2 185 E
 4 Links Beech 15 1/2 178 1/2 to 15 Links M Beech 6 1/2 53 1/2 5 Links from
 wood 3 1/2 16 1/2 11 8 1/2 O Elm 4 1/2 58 1/2 8 1/2 E Hickory 6 1/2 16 1/2 11
 2 1/2 P Red Oak 36 1/2 124 1/2 35 Ironwood 2 1/2 5 8 1/2 7 Links.
 for the length of the line & quantity of Acres see the plat
 Surveyed Nov. 9th 1835

Amza Saunders
 Silas Arbogast ch. carrier

Lan Hoptkin
 Logan County Surveyor

N^o 291 Surveyed Nov. 9th 1835 a line for Amza Saunders & James Weatherhead
 dividing part S 36 S 75 R 7 E Lewis town Reserve as follows Beginning on
 the center of the North line of said section at the original gr. corner a Beech
 15 1/2 D No 6 18 L Ironwood 3 1/2 cut down, marked new angle 4 1/2 D 53 1/2 E
 11 Links, then S 33 3/4 E 26 ch. 30 Links crossing run Creek at 10 ch to the
 boundary line a Spruce Beech 15 1/2 D 157 1/2 33 Links Buck Eye 8 1/2 D 58 1/2
 16 1/2 Links

L Hoptkin Logan County Surveyor



Description of Corner.

A. N. E. Corner S 5 S 1 R 8. 2 B
 Pin Oak 24 1/2 North 29 Links
 Hickory 8 1/2 D 53 1/2 19 L
 C Beech 18 1/2 D 56 1/2 25 Hickory 12 1/2 D 18 1/2 25 Links D Beech 18 1/2 D 56 1/2 25 L Beech
 22 1/2 D 112 20 Links Ironwood 18 1/2 18 1/2 30 Links A Hickory 18 1/2 D 18 1/2 28 Links A W
 24 1/2 D 53 1/2 20 L H Original gr. corner on south line of S 3. p. II Logwood 3 1/2
 17 1/2 W 34 L 4 Logwood 1 1/2 D 54 1/2 13 Links K S. E. Corner of Sect. II Sugar 6 1/2
 Iron 14 Links Beech 15 1/2 D 174 1/2 57 Links M Beech 22 1/2 W 17 L Beech 12 1/2
 18 1/2 W 12 B N Hickory 18 1/2 D 58 1/2 11 1/2 L Beech 8 1/2 D 16 1/2 31 1/2 B O Beech 1/2 52 L
 56 1/2 W 27 L Sugar 5 1/2 D 16 1/2 20 Links P Elm 22 1/2 D 56 1/2 42 L Hickory 10 1/2
 13 1/2 W 14 L G Sect. corner R. gr. Post between S 3 1/4 Beech 6 1/2 D 18 1/2 25 L
 Water Beech (down) 11 1/2 D Beech 20 1/2 D 132 1/2 11 L Lynn 16 1/2 D 53 1/2 17 L
 T Hickory 18 1/2 D 16 1/2 19 L Iron 12 1/2 D 54 1/2 25 L Gray Ash 15 1/2 D 54 1/2 38 V Iron 20 1/2
 Iron 20 Hickory 6 1/2 D 54 1/2 14 L 1/2 1/2 1/2 1/2 ch. corner Nov. 11 1835 L Hoptkin L ch. carrier