

280
N^o 357
8397

July 1837

Surveyed for the Mulkem on part of the S.E. Quarter of
S28. T3. R14 M. 1837 as follows. Beginning at a stone in
the N. line of S31. Gr. S. Corner, thence North 30 ch 94 to a
stone, thence N 89 E 25. ch 94 to a stone, thence South
30 ch 80 to a stone, thence S 89 W 25 ch 94 to the beginning
Containing 10 acres.

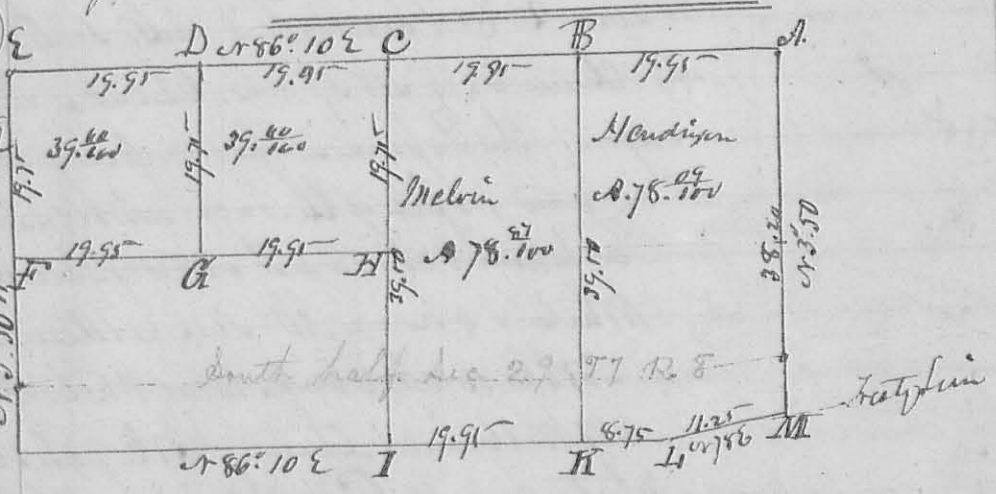
D. Hopkins Sur. S. C. O.

N^o 358
8398

Surveyed July 19. 1837. for the Mulkem part of
Military Survey N^o 9905 as follows. Beginning at an Elm
and Sugar Corns easterly corner to Peter Stamaty thence
N 12 W 19 poles, ending a Road at 92 poles to the south
line of Survey N^o 9930. at a Hickory and Wild Cherry bush
thence with said line N 74 E 86 poles to a Sugar Hickory
corner to Horner Patterson's Lease, thence S 12 E 140 poles, ending
a Road at 88 poles to a large Elm on the bank of a new
corner to Saml. C. Hull, thence with the Meander of said
Creek N 27 W 16 poles, S 67 W 20 poles, S 9 E 13 poles, S 34 W 12 poles,
S 57 W 12 poles, S 15 W 11 poles, S 27 E 8 poles, S 70 W 11 poles, S 40 W 8 poles,
S 58 W 8 poles, and S 10 W 10 poles to the beginning. Containing 81²/₁₀₀
Acres.

J. Ferguson. R. Patterson ch. D. Hopkins Sur. S. C. O.

N^o 359 8399
S. 29 N 7 S. R. 5 E
Lewis & Ann
Reserve
Surveyed
July 26.
1837.

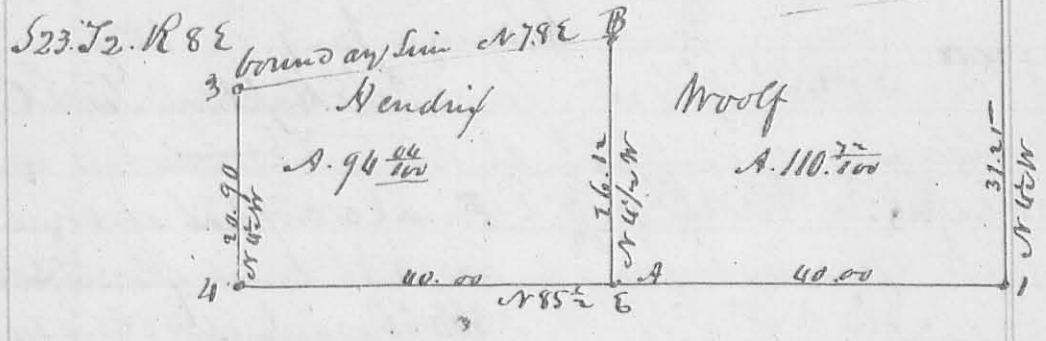


Corners. A. Gr. S. Corner between S28. 29
B. Ash 12 S. South 35. Ash. 6 S. N. 30 W 12
C. Ash 10. S. S. 53 N 36. Elm 15 S. N. 15 E 13
D. Elm 15. N. 14 E 26. Hickory 12. S. 22 E 37
E. Quarter Section Corner between S29. 30.

F. R. Oak 15. 1st DP N10E 15 Sinks Hickory 6. 1st DP S19E 5 Sinks
 G. Beech 15. 56E 11 Sinks Jr. Wood. N30W 10 Sinks.
 I. Ash 12. 1st DP. S48W 23 Sinks. Ash 6. 1st DP N48E 35 Sinks
 H. R. Oak. 6. 1st DP N89W 41. Sugar 22. 1st DP N80E 47 S
 K. Beech 9. 1st DP. N55E 3 Sinks Jr. wood 3. 1st DP S16W 14 Sinks
 L. Corner of Section. -

Dea Hopkins Co. Sur. S. G.

N. 360
 9400



Description of Corner. at A. Beech 15. 1st DP N12W 23 Sinks Elm 22. 1st DP S5E 40 Sinks
 " B Sugar 6. 1st DP S53W 6 S. Hickory 2. 1st DP N53E 4 Sinks.
 at 1. 2. 3. 4. Origin at Section Corner -
 the foregoing survey of T. 23. R. 8 E was made for Hendrix & Woolf
 Jan'y 25. & 26. 1837.

Dea Hopkins Co. Sur. S. G.

Also at Larnestown.

N. 361
 8401

Survey is for Larnestown. the SW quarter of Section 28. T. 5 S
 R. 8 E. is divided the same as follows. Beginning at the South
 East Corner of the same at an ~~elm~~ Ash 12. 1st DP S53W 10.
 Sinks. then N30W 33 ch. ending a creek to J. Driebach's
 S. E. Corner. thence with his south line S86° 10' W 39 ch. 80 Sinks
 ending a creek at 6. 7. 310 ch. to the origin of quarter corner
 between 528 & 29. a Beech 56 W 40 S. Date & 5th DP. N57E 29 Sinks. then
 S3° 50' E 38 ch. 20 Sinks to the SW Corner of the said section in the old
 boundary line. thence with said line N78E to the beginning
 the division line begins on the N. line of the quarter 19 ch 90
 Sinks from either corner at an Elm 8. 1st DP S55W 23 S. Beech 14.
 1st DP. N68E 45 Sinks. then S3° 50' E 35 ch. 62 links to Sugar 2. 1st DP
 N35E 6 Sinks. Beech 15. 1st DP S10E 21 Sinks. in the boundary line -

Dea Hopkins S. G.