

RECEIVED 7-18-94 AL GUY ✓



# Lee Surveying and Mapping Co.



Farm Surveys • Lot Surveys • Topography • Subdivisions • Construction Layout

143 EAST COLUMBUS AVENUE  
BELLEFONTAINE, OHIO 43311

(513) 593-7335

JEFFREY I. LEE, P.S.

## VIRGINIA HOGAN 1.560 ACRES

Lying in Section 30, Town 7, Range 8, Bloomfield Township, Logan County, Ohio.

Being out of the Virginia E. Hogan 60 acre tract as deeded and described in Volume 335, Page 59, Tract I of the Logan County Records of Deeds and being more particularly described as follows:

Beginning at a 5/8 inch iron rod (with a Logan County Engineer's cap) found at the northeast corner of said Section 30 and, also, on the center-line of County Highway 35.

THENCE, with the east line of Section 30 and the center-line of County Highway 35, S 0°-02'-20" W, a distance of 2226.05 feet to a railroad spike set at the TRUE POINT OF BEGINNING.

THENCE, with the east line of Section 30 and the center-line of County Highway 35, S 0°-02'-20" W, a distance of 264.28 feet to a railroad spike set. The said railroad spike is N 0°-02'-20" E, a distance of 160.00 feet from a Logan County Engineer's 5/8 inch iron rod found at the southeast corner of the northeast quarter of Section 30.

THENCE, N 83°-32'-03" W, a distance of 287.29 feet to a 5/8 inch iron rod set.

THENCE, N 0°-40'-50" W, a distance of 209.55 feet to a 5/8 inch iron rod set.

THENCE, N 85°-33'-20" E, a distance of 289.00 feet to the point of beginning.

Containing 1.560 acres of which 0.180 acre is within the highway right-of-way.

The basis for bearings is based upon the east line of Section 30 being S 0°-02'-20" W, and all other bearing are from angles and distances measured in a field survey by Lee Surveying and Mapping Company on July 1, 1994.

Description prepared by:

Jeffrey I. Lee  
Professional Surveyor 6359  
July 17, 1994



L 2202

ORIGINAL STAMP IN GREEN

INDEXED ON MAP  
8930 1D

LEGEND

- 5/8" I. ROD FOUND  
LOGAN COUNTY ENGINEER
- ⊕ RAILROAD SPIKE SET
- 5/8" I. ROD SET



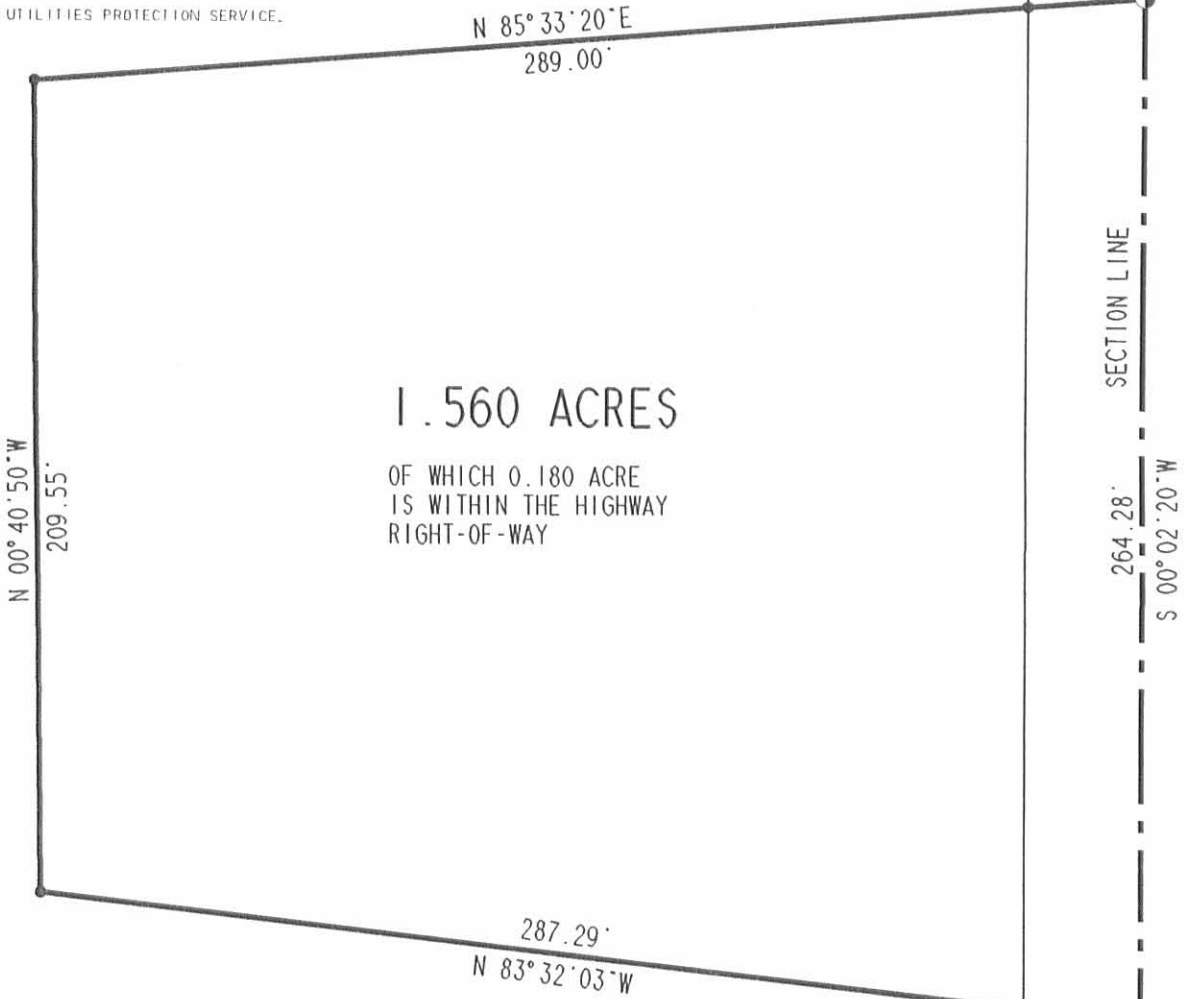
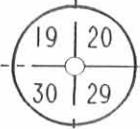
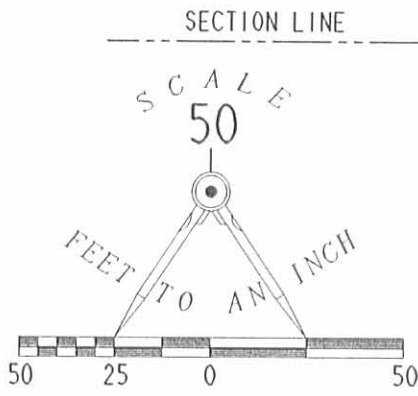
2 WORKING DAYS

**BEFORE YOU DIG**



CALL TOLL FREE **800-362-2764**

OHIO UTILITIES PROTECTION SERVICE.



**1.560 ACRES**

OF WHICH 0.180 ACRE  
IS WITHIN THE HIGHWAY  
RIGHT-OF-WAY

**SURVEY OF 1.560 ACRES  
OUT OF THE  
VIRGINIA E. HOGAN  
60 ACRE TRACT  
VOLUME 335. PAGE 59  
SECTION 30. TOWN 7. RANGE 8  
BLOOMFIELD TOWNSHIP  
LOGAN COUNTY. OHIO**

QUARTER SECTION LINE

REFERENCES:

LOGAN COUNTY ENGINEER'S RECORDS:  
FIELD BOOK 601. PP 60 - 63

SURVEYED BY:



**LEE SURVEYING & MAPPING CO.**  
143 East Columbus Avenue  
BELLEFONTAINE, OHIO 43311  
(513) 593-7335

D 241 VHOGAN

L 2202-4

INDEXED ON MAP  
8930 1P

ORIGINAL STAMP IN GREEN