

Lee Surveying and Mapping Co., Inc.

Land Surveys • Topography • Subdivisions • Construction Layout

117 N. Madriver St.
Bellefontaine OH 43311



Phone: (937) 593-7335
Fax: (937) 593-7444
surveys@lsmine.us

SCHAFFER 5.000 ACRES

Lying in Section 33, Town 2, Range 8, Bloomfield Township, Logan County, Ohio.

Being out of the Karen K. Schaffer original 140.36 acre tract as deeded and described in Official Record 492, Page 343, Tract I of the Logan County Records of deeds and being more particularly described as follows:

Beginning at a stone found in a monument box at the northeast corner of Section 33, at the intersection of the center-lines of County Highway 58 and County Highway 34.

THENCE, with the north line of Section 33, and the center-line of County Highway 58 (60 feet wide), N 83°-30'-00"W, a distance of 2737.93 feet to a MAG nail set at the TRUE POINT OF BEGINNING.

THENCE, S 06°-30'-00"W, a distance of 435.60 feet to a 5/8 inch iron rod set, passing a 5/8 inch iron rod set at 30.00 feet.

THENCE, N 83°-30'-00"W, a distance of 500.00 feet to a 5/8 inch iron rod set.

THENCE, N 06°-30'-00"E, a distance of 435.60 feet to a MAG nail set, passing a 5/8 inch iron rod set at 405.60 feet.

THENCE, with the north line of Section 33, and the center-line of County Highway 58, S 83°-30'-00"E, a distance of 500.00 feet to the point of beginning.

Containing 5.000 acres, of which 0.344 acre is within the highway right-of-way.

The basis for bearings is the north line of Section 33, being N 83°-30'-00"W, and all other bearings are from angles and distances measured in a field survey by Lee Surveying and Mapping Co., Inc. on March 21, 2003.

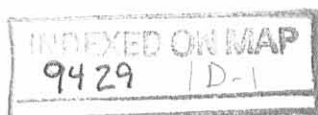
Description prepared by:

A handwritten signature in black ink that reads "William K. Bruce". The signature is written in a cursive, flowing style.

William K. Bruce
Professional Surveyor 7437
March 27, 2003
Revised August 9, 2011



L-3546



Lee Surveying and Mapping Co., Inc.

Land Surveys • Topography • Subdivisions • Construction Layout

117 N. Madriver St.
Bellefontaine OH 43311



Phone: (937) 593-7335
Fax: (937) 593-7444

SCHAFFER 17.662 ACRES

Lying in Section 33, Town 2, Range 8, Bloomfield Township, Logan County, Ohio.

Being out of the Karen K. Schaffer original 140.36 acre tract as deeded and described in Official Record 492, Page 343, Tract I, of the Logan County Records of deeds and being more particularly described as follows:

Beginning at a stone found in a monument box at the northeast corner of Section 33, at the intersection of the center-lines of County Highway 58 and County Highway 34.

THENCE, with the north line of Section 33, and the center-line of County Highway 58 (60 feet wide), N 83°-30'-00"W, a distance of 1676.20 feet to a MAG nail set at the TRUE POINT OF BEGINNING.

THENCE, with the west line of the Richard A. Cron 101 acre tract (Vol. 385, Pg. 408, Parcel I, Tracts I and II), S 07°-06'-49"W, a distance of 2667.95 feet to a 5/8 inch iron rod set, passing a 5/8 inch iron rod set at 30.00 feet.

THENCE, with the north line of the Franklin L. Pulfer 80 acre tract (O.R. 407, Pg. 57, Tract II), N 83°-14'-32"W, a distance of 982.27 feet to a 5/8 inch iron rod set.

THENCE, N 07°-05'-40"E, a distance of 723.77 feet to a 5/8 inch iron rod set.

THENCE, S 83°-14'-32"E, a distance of 952.51 feet to a 5/8 inch iron rod set.

THENCE, N 07°-06'-49"E, a distance of 1944.04 feet to a MAG nail set, passing a 5/8 inch iron rod set at 1914.04 feet.

THENCE, with the north line Section 33 and the center-line of County Highway 58, S 83°-30'-00"E, a distance of 30.00 feet to the place of beginning.

Containing 17.662 acres, of which 0.021 acre is within the highway right-of-way.

The basis for bearings is the north line of Section 33, being N 83°-30'-00"W, and all other bearings are from angles and distances measured in a field survey by Lee Surveying and Mapping Co., Inc. on March 21, 2003.

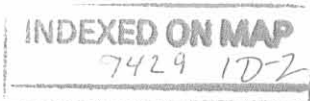


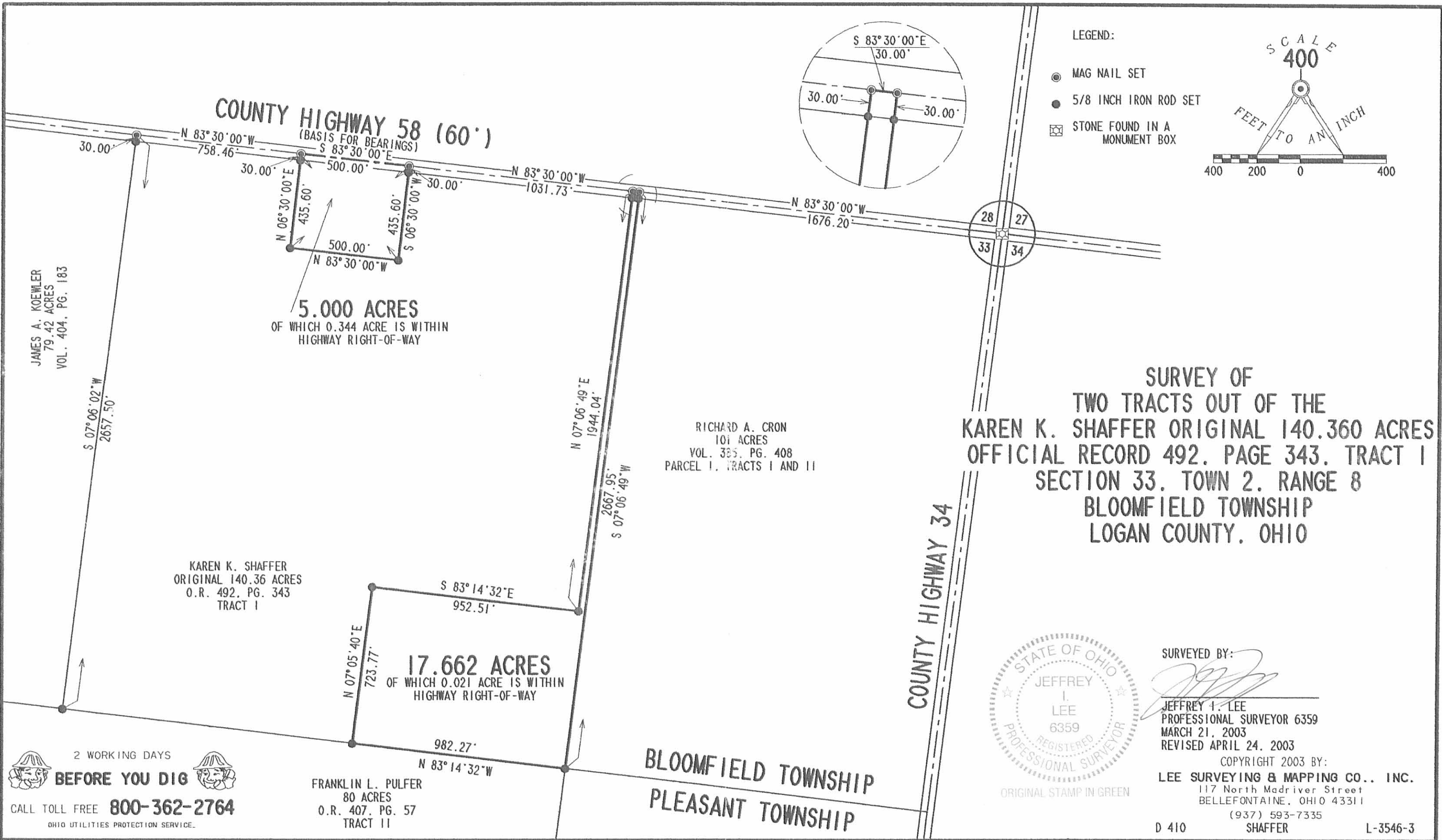
ORIGINAL STAMP IN GREEN

Description prepared by:

A handwritten signature in black ink, appearing to read 'Jeffrey I. Lee', written over a light blue background.
Jeffrey I. Lee
Professional Surveyor 6359
March 27, 2003
Revised June 27, 2006

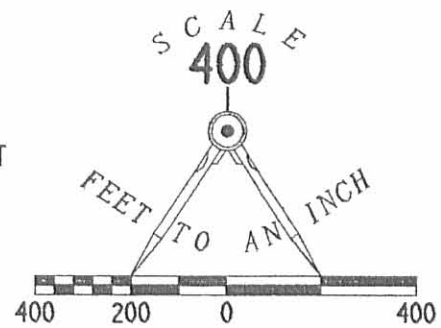
L-3546





LEGEND:

- MAG NAIL SET
- 5/8 INCH IRON ROD SET
- ☒ STONE FOUND IN A MONUMENT BOX



**SURVEY OF
TWO TRACTS OUT OF THE
KAREN K. SHAFFER ORIGINAL 140.360 ACRES
OFFICIAL RECORD 492, PAGE 343, TRACT I
SECTION 33, TOWN 2, RANGE 8
BLOOMFIELD TOWNSHIP
LOGAN COUNTY, OHIO**

JAMES A. KOEWLER
79.42 ACRES
VOL. 404, PG. 183

KAREN K. SHAFFER
ORIGINAL 140.36 ACRES
O.R. 492, PG. 343
TRACT I

RICHARD A. CRON
101 ACRES
VOL. 385, PG. 408
PARCEL I, TRACTS I AND II

17.662 ACRES
OF WHICH 0.021 ACRE IS WITHIN
HIGHWAY RIGHT-OF-WAY

FRANKLIN L. PULFER
80 ACRES
O.R. 407, PG. 57
TRACT II



SURVEYED BY:
[Signature]
JEFFREY I. LEE
PROFESSIONAL SURVEYOR 6359
MARCH 21, 2003
REVISED APRIL 24, 2003

COPYRIGHT 2003 BY:
LEE SURVEYING & MAPPING CO., INC.
117 North Madriver Street
BELLEFONTAINE, OHIO 43311
(937) 593-7335

2 WORKING DAYS
BEFORE YOU DIG
CALL TOLL FREE **800-362-2764**
OHIO UTILITIES PROTECTION SERVICE.

9429 1P