

**EXHIBIT "A"**  
**WETLANDS RESERVE PROGRAM**  
**42.199 ACRE EASEMENT DESCRIPTION**

**WILLIAM SHULTZ**  
**SECTION 26 & 25, TOWN 2, RANGE 8**  
**TOWNSHIP of BLOOMFIELD**  
**COUNTY of LOGAN**  
**STATE of OHIO**

The following described 42.199 acre tract is a conservation easement for the Wetland Reserve Program and is lying in the SE quarter of Section 26, Town 2, Range 8, and in the SW quarter of Section 25, Town 2, Range 8, and also being part of William W. Shultz's 80.26 acre tract described in Official Record 32, page 920, and being part of William W. Shultz's 15.005 acre tract described in Deed Volume 396, page 292, and also being part of Susan B. Shultz's 40.00 acre tract described in Official Record 32, page 922 (Tract II), and being more particularly described as follows;

Beginning for reference at a 1/2 inch diameter iron pin found at the intersection of the centerline of County Road 21 (60') with the centerline of County Road 58, and bears N. 88° - 49' - 12" E. a distance of 19.54 feet from a stone found at the Southwest corner of said 80.26 acre tract and the Southeast corner of Susan B. Shultz's 40.00 acre tract described in Official Record 181, page 905. Said iron pin found being on the South line of said 80.26 acre tract and on the South line of the Southeast quarter of Section 26, Town 2, Range 8, having a G.P.S. coordinate of North 262029.2500 and East 1565309.0300.

Thence N. 2° - 31' - 59" E. 428.99 feet, more or less, departing from the South line of said Section 26 and the centerline of said County Road 58, entering said 80.26 acre tract to a point on the East side of said County Road 21, said point being the true **place of beginning**.

Thence N. 1° - 13' - 38" E. 744.67 feet, more or less, to a point.

Thence N. 89° - 03' - 39" E. 176.92 feet, more or less, to a point.

Thence N. 9° - 43' - 06" E. 132.52 feet, more or less, to a point.

Thence N. 22° - 22' - 12" E. 218.43 feet, more or less, to a point.

Thence N. 87° - 40' - 55" E. 109.28 feet, more or less, to a point.

Thence N. 1° - 32' - 46" E. 143.80 feet, more or less, to a point.

INDEXED ON MAP  
9493 127

Thence N. 25° - 56' - 15" W. 111.07 feet, more or less, to a point.

Thence N. 31° - 25' - 42" W. 101.97 feet, more or less, to a point.

Thence N. 3° - 34' - 55" E. 315.32 feet, more or less, to a point.

Thence N. 34° - 27' - 22" E. 146.45 feet, more or less, to a point.

Thence N. 82° - 14' - 26" E. 83.70 feet, more or less, to a point.

Thence S. 75° - 29' - 08" E. 21.51 feet, more or less, to a point.

Thence S. 43° - 21' - 25" E. 91.49 feet, more or less, to a point.

Thence N. 89° - 11' - 00" E. 125.46 feet, more or less, to a point.

Thence N. 68° - 45' - 22" E. 167.33 feet, more or less, to a point.

Thence S. 64° - 42' - 58" E. 46.01 feet, more or less, to a point.

Thence S. 20° - 12' - 44" E. 191.78 feet, more or less, to a point.

Thence S. 77° - 13' - 43" E. 255.00 feet, more or less, to a point.

Thence S. 81° - 37' - 53" E. 405.93 feet, more or less, leaving said 80.26 acre tract and said Section 26 and entering said 40.00 acre tract and said Section 25, to a point.

Thence S. 4° - 03' - 58" E. 225.37 feet, more or less, to a point.

Thence N. 84° - 55' - 02" W. 270.56 feet, more or less, to a point.

Thence S. 31° - 01' - 18" E. 264.45 feet, more or less, to a point.

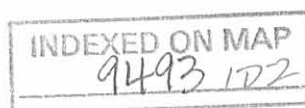
Thence N. 85° - 40' - 08" E. 152.27 feet, more or less, to a point.

Thence S. 28° - 10' - 29" E. 113.67 feet, more or less, to a point.

Thence S. 74° - 41' - 19" E. 293.41 feet, more or less, to a point.

Thence S. 88° - 32' - 41" E. 148.44 feet, more or less, to a point.

Thence N. 87° - 48' - 37" E. 355.67 feet, more or less, to a point.



**Thence S. 4° - 09' - 08" E. 182.44 feet, more or less,** to a point on the South line of said 40.00 acre tract and the North line of Howard A. Whitehead's 30.42 acre tract, described in Official Record 503, page 403 (Tract II).

**Thence N. 88° - 07' - 04" W. 459.12 feet, more or less,** following the South line of said 40.00 acre tract, the North line of said 30.42 acre tract and the North line of Rhonda Dee Butler's 4.157 acre tract, described in Official Record 523, page 489, to a point at the Northwest corner of said 4.157 acre tract and northeast corner of said 15.005 acre tract.

**Thence S. 3° - 15' - 46" W. 363.35 feet, more or less,** departing from the South line of said 40.00 acre tract and following the West line of said 4.157 acre tract and the East line of said 15.005 acre tract, to a point.

**Thence N. 81° - 49' - 23" W. 711.45 feet, more or less,** departing from the West line of said 4.157 acre tract and entering said 15.005 acre tract, to a point.

**Thence N. 36° - 21' - 29" W. 388.48 feet, more or less,** leaving said 15.005 acre tract and said Section 25; entering said 80.26 acre tract and said Section 26, to a point.

**Thence N. 16° - 13' - 54" W. 577.37 feet, more or less,** to a point.

**Thence N. 84° - 12' - 32" W. 217.04 feet, more or less,** to a point.

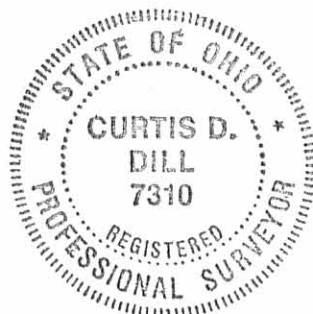
**Thence S. 4° - 39' - 09" W. 1394.52 feet, more or less,** to a point.

**Thence S. 87° - 42' - 03" W. 602.63 feet, more or less, to the place of beginning.**

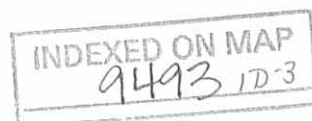
**Containing 42.199 acres** of which 28.289 acres being out of said 80.26 acre tract, 8.60 acres being out of said 40.00 acre tract and 5.310 acres being out of said 15.005 acre tract.

Basis of bearing being the centerline of County Road 21 (N. 1° - 23' - 17" E.) from Station 18 + 27.6 to Station 42 + 92 as shown in Field Book No. 572, pages 13-15. Said bearing derived from G.P.S. coordinates supplied by the Logan Soil and Water Conservation District.

This easement description was prepared by Curtis D. Dill, Registered Surveyor No. 7310, from deeds and surveys of record and information provided by the Logan Soil and Water Conservation District in July 2004.



*Curtis D. Dill*  
Curtis D. Dill  
Deputy Surveyor  
Logan County Engineer's Office  
Registered Surveyor No. 7310



Received 10/12/04 OK GMA

**EXHIBIT "A"**  
**WETLANDS RESERVE PROGRAM**  
**37.212 ACRE EASEMENT DESCRIPTION**

**WILLIAM SHULTZ**  
**SECTION 26, TOWN 2, RANGE 8**  
**TOWNSHIP of BLOOMFIELD**  
**COUNTY of LOGAN**  
**STATE of OHIO**

The following described 37.212 acre tract is a conservation easement for the Wetland Reserve Program and is lying in the SE and SW quarter of Section 26, Town 2, Range 8, and being part of William W. Shultz's 59.950 acre tract described in Deed Volume 366, page 763, and being part of William W. Shultz's 13.56 acre tract described in Official Record 275, page 306 (Tract II), and also being part of Susan B. Shultz's 40.00 acre tract described in Official Record 181, page 905, and being more particularly described as follows;

Beginning for reference at a 1/2 inch diameter iron pin found at the intersection of the centerline of County Road 21 (60') with the centerline of County Road 58, and bears N. 88° - 49' - 12" E. a distance of 19.54 feet from a stone found at the Southeast corner of said 40.00 acre tract and the Southwest corner of William W. Shultz's 80.26 acre tract described in Official Record 32, page 920. Said iron pin found being on the South line of said 80.26 acre tract and on the South line of the Southeast quarter of Section 26, Town 2, Range 8, having a G.P.S. coordinate of North 262029.2500 and East 1565309.0300.

Thence N. 3° - 49' - 03" W. 540.27 feet, more or less, departing from the south line of said Section 26 and the centerline of said County Road 58, crossing said 80.26 acre tract and entering said 40.00 acre tract, to a point on the West side of County Road 21, said point being the true **place of beginning**.

**Thence N. 88° - 39' - 44" W. 1234.09 feet, more or less**, crossing said 40.00 acre tract to a point on the West line of said 40.00 acre tract and on the East line of said 59.950 acre tract.

**Thence N. 1° - 05' - 58" E. 332.02 feet, more or less**, following the West line of said 40.00 acre tract and the East line of said 59.950 acre tract, to a point.

**Thence N. 56° - 43' - 41" W. 735.18 feet, more or less**, departing from the West line of said 40.00 acre tract and entering said 59.950 acre tract, to a point.

**Thence N. 19° - 57' - 14" W. 642.47 feet, more or less**, to a point on the North line of said 59.950 acre tract and the South line of Velda L. Knief Trustee Etal's 95.12 acre tract described in Official Record 232, page 476.

INDEXED ON MAP  
9493 1D4

**Thence S. 89° - 07' - 17" E. 809.87 feet, more or less,** following the North line of said 59.950 acre tract, the South line of said 95.12 acre tract and a South line of William W. Shultz's 28.27 acre tract as described in Official Record 275, page 306 (Tract I), to a point.

**Thence S. 2° - 33' - 49" E. 195.62 feet, more or less,** departing from a South line of said 28.27 acre tract and entering said 59.950 acre tract, to a point.

**Thence S. 89° - 20' - 39" E. 263.02 feet, more or less,** leaving said 59.950 acre tract and entering said 13.56 acre tract, to a point.

**Thence S. 7° - 41' - 58" E. 245.72 feet, more or less,** to a point.

**Thence S. 87° - 03' - 50" E. 568.88 feet, more or less,** to a point.

**Thence S. 3° - 19' - 18" E. 218.85 feet, more or less,** leaving said 13.56 acre tract and entering said 40.00 acre tract, to a point.

**Thence S. 85° - 58' - 37" E. 381.58 feet, more or less,** to a point on the West side of said County Road 21.

**Thence S. 1° - 18' - 30" W. 639.42 feet, more or less, to the place of beginning.**

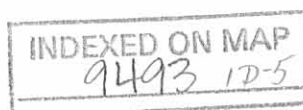
**Containing 37.212 acres** of which 22.313 acres being out of said 40.00 acre tract, 12.820 acres being out of said 59.950 acre tract and 2.080 acres being out of said 13.56 acre tract.

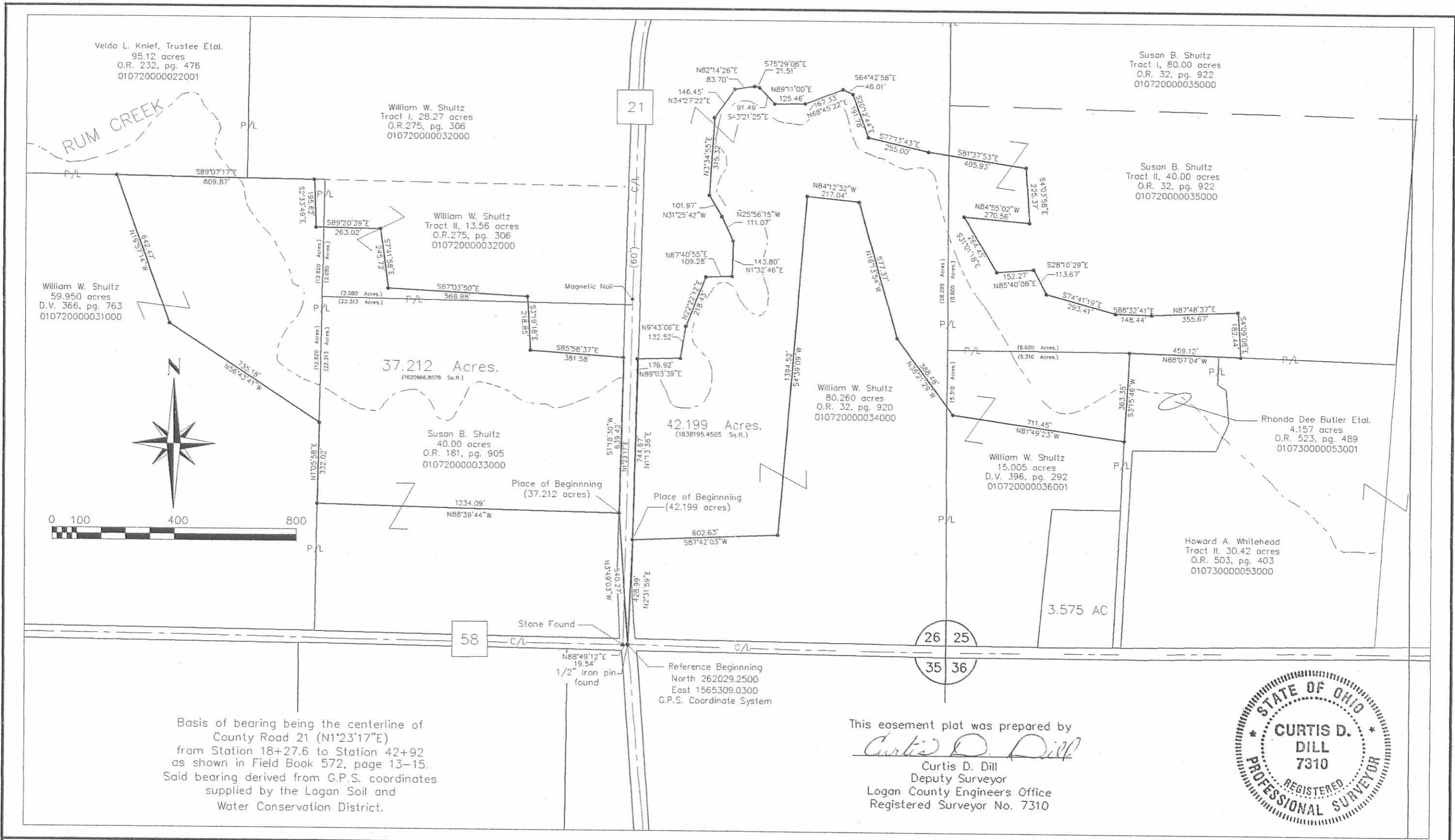
Basis of bearing being the centerline of County Road 21 (N. - 1° - 23' - 17" E.) from Station 18 + 27.6 to Station 42 + 92 as shown in Field Book No. 572, pages 13-15. Said bearing derived from G.P.S. coordinates supplied by the Logan Soil and Water Conservation District.

This easement description was prepared by Curtis D. Dill, Registered Surveyor No. 7310, from deeds and surveys of record and information provided by the Logan Soil and Water Conservation District in July 2004.



Curtis D. Dill  
Deputy Surveyor  
Logan County Engineer's Office  
Registered Surveyor No. 7310





Basis of bearing being the centerline of County Road 21 (N1°23'17"E) from Station 18+27.6 to Station 42+92 as shown in Field Book 572, page 13-15. Said bearing derived from G.P.S. coordinates supplied by the Logan Soil and Water Conservation District.

This easement plot was prepared by  
*Curtis D. Dill*  
 Curtis D. Dill  
 Deputy Surveyor  
 Logan County Engineers Office  
 Registered Surveyor No. 7310



LOGAN COUNTY ENGINEER'S OFFICE  
 Logan County Engineer's Office  
 Scott C. Coleman, P.E., P.S.  
 1991 County Road 13, P.O. Box 427  
 Bellefontaine, OH 43311  
 Phone: (937) 592-2791  
 Fax: (937) 599-2658  
 Map Room: (937) 599-7238

DATE	REVISIONS	DATE	BY
DATE :			
SCALE : 1" = 400'			
CHECKED BY: CDD			
DRAFTED BY: GTD			

Wetland Reserve Program (WRP) Easement Area  
 TOWNSHIP of BLOOMFIELD  
 COUNTY of LOGAN  
 Sections 25 and 26, Town 2, Range 8  
 William Shultz

SHEET 1 OF 1

INDEXED ON MAP  
 9493 1P