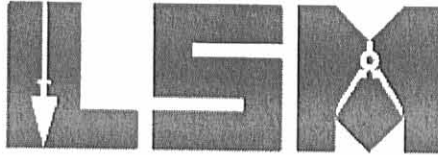


RECID 2-14-08 sum ok

Lee Surveying and Mapping Co., Inc.

Land Surveys • Topography • Subdivisions • Construction Layout

117 N. Madriver St.
Bellefontaine OH 43311



Phone: (937) 593-7335
Fax: (937) 593-7444

FALER 2.047 ACRES

Lying in Sections 29 & 28, Town 2, Range 8, Bloomfield Township, Logan County, Ohio.

Being out of the Gertrude Faler 79 acre tract and 1.12 acre tract as deeded and described in Volume 343, Page 677 of the Logan County Records of Deeds and being more particularly described as follows:

Commencing on a 1/2 inch iron rod found on the intersection of the center-lines of County Highway 59 and Township Road 23.

THENCE, with the center-line of Township Road 23 (40 feet wide), S 9°-28'-58"W, a distance of 487.72 feet to a MAG nail set at the TRUE POINT OF BEGINNING.

THENCE, with the center-line of Township Road 23, S 9°-28'-58"W, a distance of 203.90 feet to a 1/2 inch iron rod found on the east line of Section 29.

THENCE, with the center-line of Township Road 23 and the east line of Section 29, S 1°-15'-00"W, a distance of 97.06 feet to a 5/8 inch iron rod set.

THENCE, N 87°-45'-46"W, a distance of 289.67 feet to a 5/8 inch iron rod set passing a 5/8 inch iron rod set at 20.00 feet.

THENCE, N 3°-10'-14"E, a distance of 305.86 feet to a 5/8 inch iron rod set.

THENCE, S 86°-33'-25"E, a distance of 308.80 feet to the point of beginning, passing a 5/8 inch iron rod set at 288.69 feet.

Containing 2.047 acres, of which 0.138 acre is within the highway right-of-way. There are 1.979 acres within Section 29 and 0.068 acre within Section 28.

The basis for bearings is the east line of Section 29, being N 1°-15'-00"E, and all other bearings are from angles and distances measured in a field survey by Lee Surveying and Mapping Co., Inc. on February 11, 2008.



ORIGINAL STAMP IN GREEN

Description prepared by:

William K. Bruce
Professional Surveyor 7437
February 12, 2008

4589028



REC'D 2-14-08 SMY OK

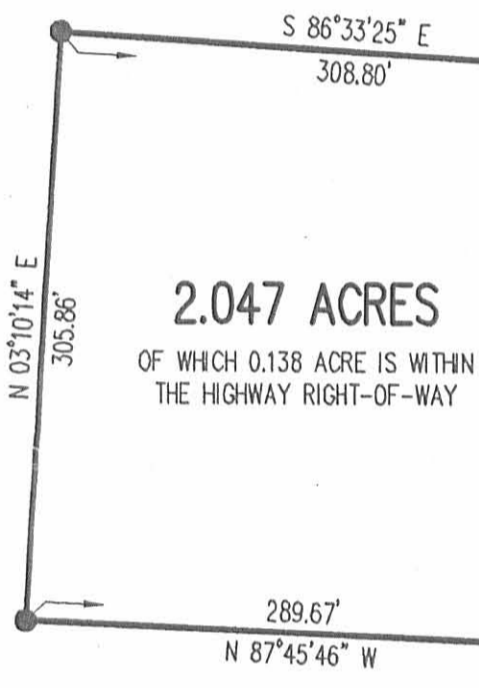
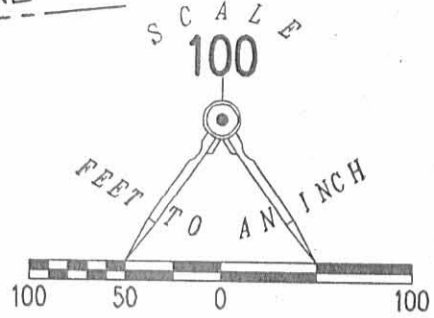
GREENVILLE TREATY LINE

COUNTY HIGHWAY 59

GERTRUDE FALER
79 ACRES
VOL. 343, PG. 677

SECTION 29, TOWN 2, RANGE 8

SECTION 28, TOWN 2, RANGE 8



GERTRUDE FALER
79 ACRES
VOL. 343, PG. 677

TOWNSHIP ROAD 23 (40')

SURVEY OF 2.047 ACRES OUT OF THE
GERTRUDE FALER
79 ACRE TRACT AND
1.12 ACRE TRACT
VOLUME 343, PAGE 677
SECTIONS 29 & 28, TOWN 2, RANGE 8
BLOOMFIELD TOWNSHIP
LOGAN COUNTY, OHIO

INDEXED ON MAP
9573 IP



SURVEYED BY:

William K. Bruce

WILLIAM K. BRUCE
PROFESSIONAL SURVEYOR 7437
FEBRUARY 10, 2008

COPYRIGHT 2008 BY:
LEE SURVEYING & MAPPING CO., INC.
117 North Madriver Street
BELLEFONTAINE, OHIO 43311
(937) 593-7335

2 WORKING DAYS
BEFORE YOU DIG
CALL TOLL FREE **800-362-2764**
OHIO UTILITIES PROTECTION SERVICE.

ORIGINAL STAMP IN GREEN

C.H. 58

KSS D0208 4589028 L-4589-3