

1-4-17

Lee Surveying and Mapping Co., Inc.



Land Surveys • Topography • Subdivisions • Construction Layout

117 N. Madriver St.
Bellefontaine OH 43311



Phone: (937) 593-7335
Fax: (937) 593-7444
surveys@lsminc.us

MUCHINIPPI CREEK FARM LLC 1.756 ACRES

Lying in Section 21, Town 7 South, Range 8 East, Bloomfield Township, Logan County, Ohio.

Being out of the Muchinippi Creek Farm LLC, 31-3/4 acre tract as deeded and described in Official Record 1010, Page 309, Tract II of the Logan County Records of Deeds and being more particularly described as follows:

Commencing on a 1 inch iron rod found on the intersection of the north line of Section 21 at the northeast corner of the northwest quarter of said Section and the center-line of County Highway 21.

THENCE, with the east line of the northwest quarter of Section 21 and the center-line of County Highway 21 (60 feet wide), S 01°-52'-00"W, a distance of 646.02 feet to a MAG nail set at the TRUE POINT OF BEGINNING.

THENCE, with the east line of the northwest quarter of Section 21 and the center-line of County Highway 21, S 01°-52'-00"W, a distance of 402.00 feet to a MAG nail set.

THENCE, with the north line of the Jerry L. Knief, as Trustee, 15.75 acre tract (O.R. 277, Pg. 489, Parcel V), N 88°-32'-47"W, a distance of 188.00 feet to a 5/8 inch iron rod set, passing a 5/8 inch iron rod set at 30.00 feet.

THENCE, N 01°-52'-01"E, a distance of 411.95 feet to a 5/8 inch iron rod set.

THENCE, S 85°-30'-54"E, a distance of 188.19 feet to the point of beginning, passing a 5/8 inch iron rod set at 158.16 feet.

Containing 1.756 acres, of which 0.277 acre is within the highway right-of-way.

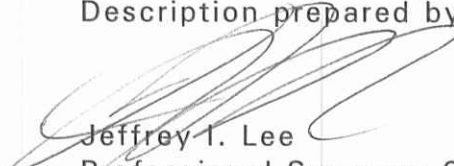
Property is subject to any and all previous easements and rights-of-way of record.

The basis for bearings is the east line of northwest quarter of Section 21, being S 01°-52'-00"W, and all other bearings are from angles and distances measured in a field survey by Lee Surveying and Mapping Co., Inc. on December 28, 2016.

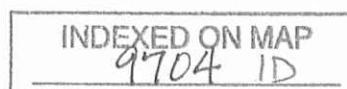


ORIGINAL STAMP IN GREEN

Description prepared by:


Jeffrey I. Lee
Professional Surveyor 6359
December 30, 2016

62081216



1-4-17

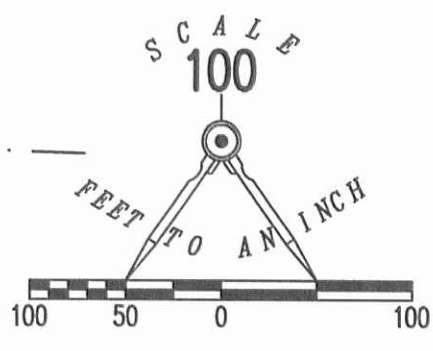
APPROVED

2 WORKING DAYS
BEFORE YOU DIG

CALL TOLL FREE **800-362-2764**
OHIO UTILITIES PROTECTION SERVICE.

THIS SURVEY WAS PREPARED IN THE ABSENCE OF
A COMPLETE AND ACCURATE TITLE SEARCH AND
DOES NOT GUARANTEE TITLE.

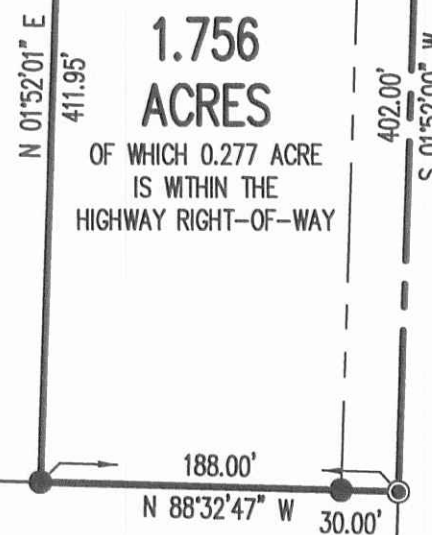
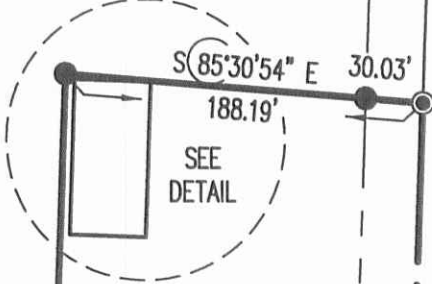
SECTION 16
SECTION 21



LEGEND:

- ⊕ 1 INCH IRON ROD FOUND
- MAG NAIL SET
- 5/8 INCH IRON ROD FOUND
- 5/8 INCH IRON ROD SET WITH PLASTIC I.D. CAP STAMPED "LSM"

MUCHINIPPI CREEK FARM LLC
31-3/4 ACRES
O.R. 1010, PG. 309
TRACT II



COUNTY HIGHWAY 21 (60')

**SURVEY OF 1.756 ACRES OUT OF THE
MUCHINIPPI CREEK FARM LLC
31-3/4 ACRE TRACT
OFFICIAL RECORD 1010, PAGE 309
TRACT II
SECTION 21, TOWN 7 SOUTH, RANGE 8 EAST
BLOOMFIELD TOWNSHIP
LOGAN COUNTY, OHIO**

JERRY L. KNIEF, AS TRUSTEE
15.75 ACRES
O.R. 277, PG. 489
PARCEL V

INDEXED ON MAP
9704 IP

COUNTY HIGHWAY 60



SURVEYED BY:

JEFFREY I. LEE
PROFESSIONAL SURVEYOR 6359
DECEMBER 28, 2016

COPYRIGHT 2016 BY:
LEE SURVEYING & MAPPING CO., INC.
117 North Madriver Street
BELLEFONTAINE, OHIO 43311
(937) 593-7335
WWW.LSMINC.US
surveys@lsminc.us