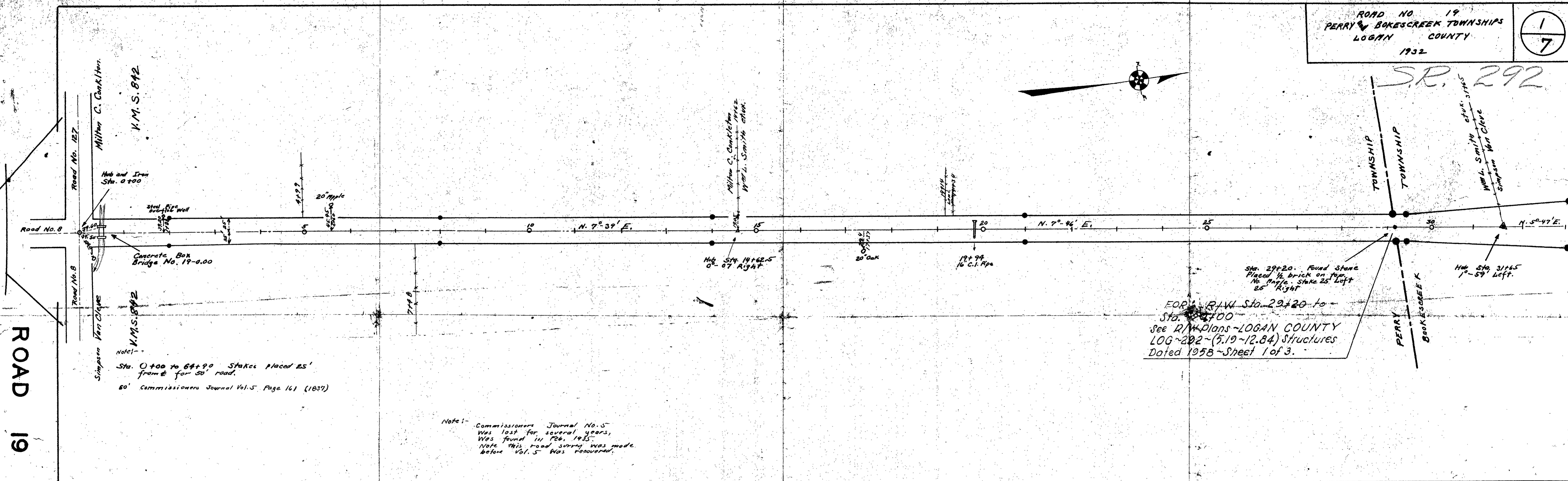


S.R. 292

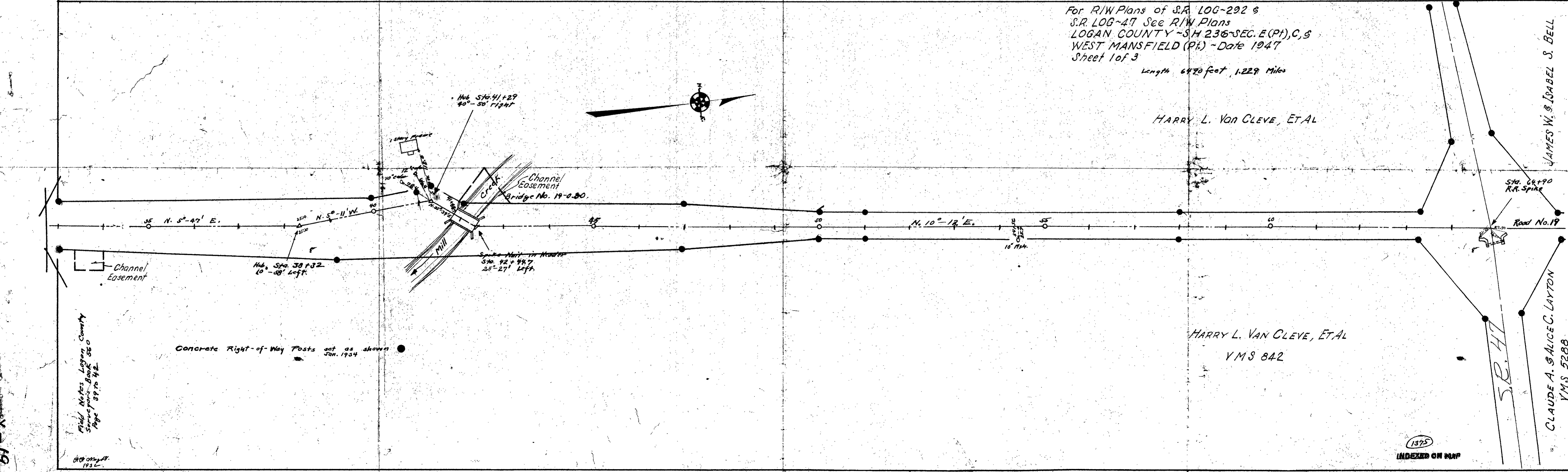
ROAD 19



Note: - Commissioners Journal No. 5 was lost for several years, was found in Feb. 1945. Note this road survey was made before Vol. 5 was recovered.

For R/W Plans of S.R. LOG-292 &
 S.R. LOG-47 See R/W Plans
 LOGAN COUNTY - SH 236-SEC. E (Pt), C, S
 WEST MANSFIELD (Pt) - Date 1947
 Sheet 1 of 3
 Length 6470 feet, 1.229 Miles

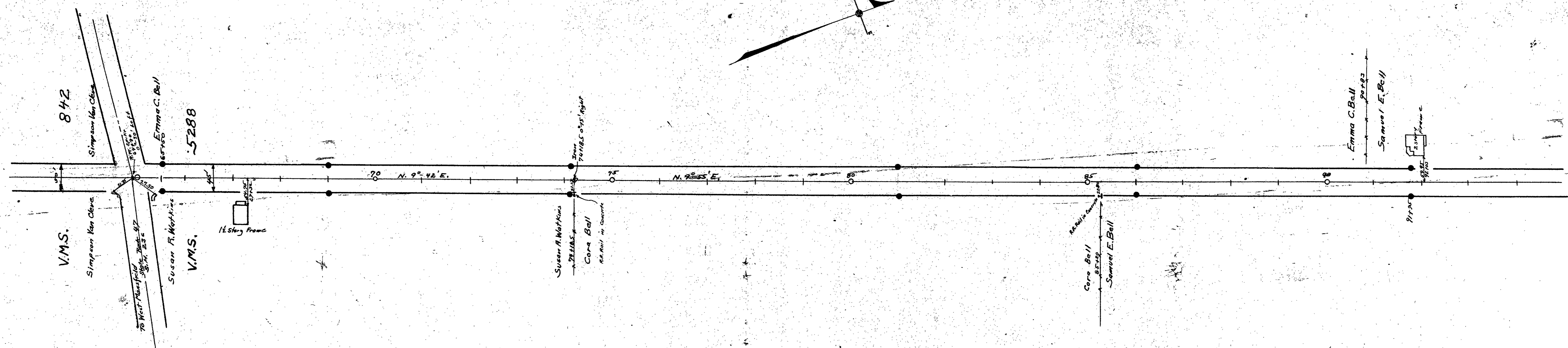
HARRY L. VAN CLEVE, ET AL



HARRY L. VAN CLEVE, ET AL
 YMS 842

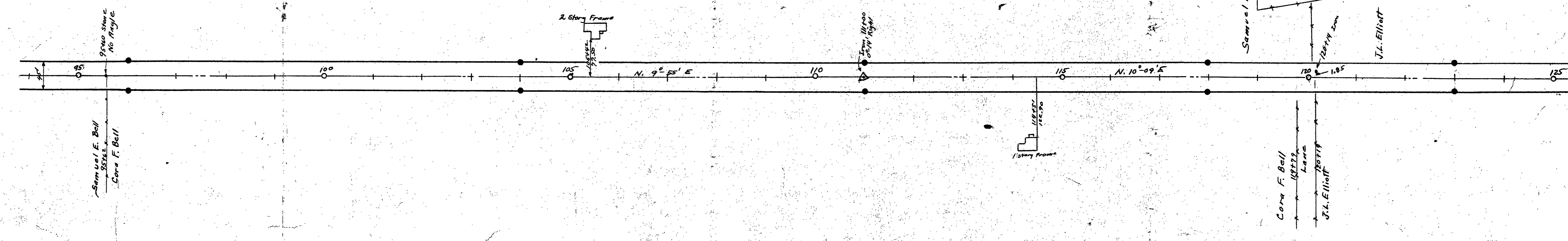
Field Notes Logan County
 Surveyors Book 520
 Page 39 to 42

57-X-19

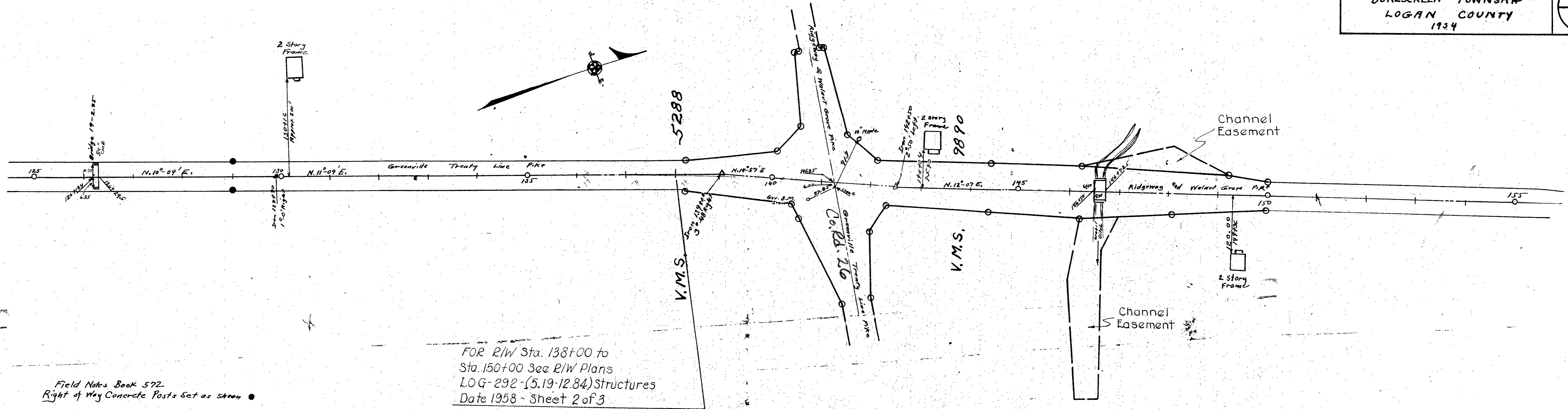


45' PIKE - Sta. 84+90 to 141+25
Greenville Treaty Lane Pike - Free Turn Pike
Record No. 9 Page 7, Book H Page 116
60' Commissioners Journal Vol. 5 Page 161 (1837)

Field Notes Book 572
Right of Way Concrete Posts Set as Shown



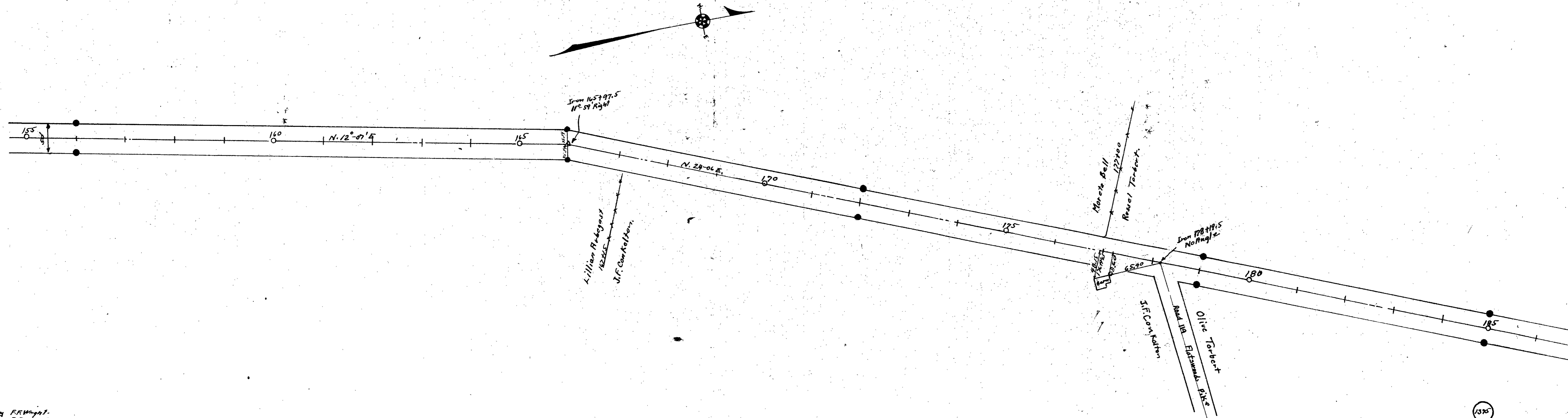
Surveyed By G. W. Wright
Drawn By G. W. Wright



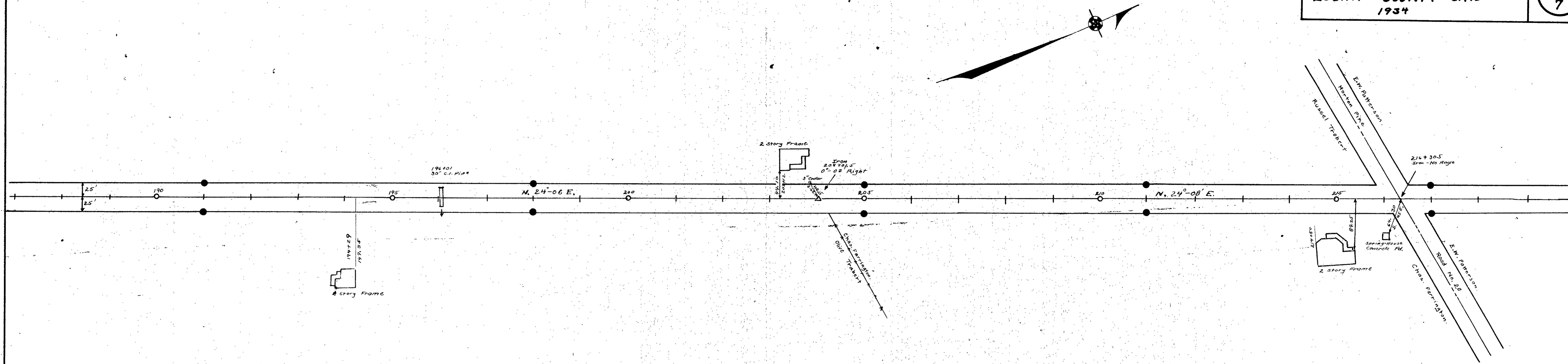
Field Notes Book 572
 Right of Way Concrete Posts Set as shown

50' Pike Sta. 141+25 To Sta. 423+79
 Ridgeway and Walnut Grove Pike - Pike Book
 N Page 76 (1896)
 60' Commissioners Journal Vol. 5 Page 161 (1837)

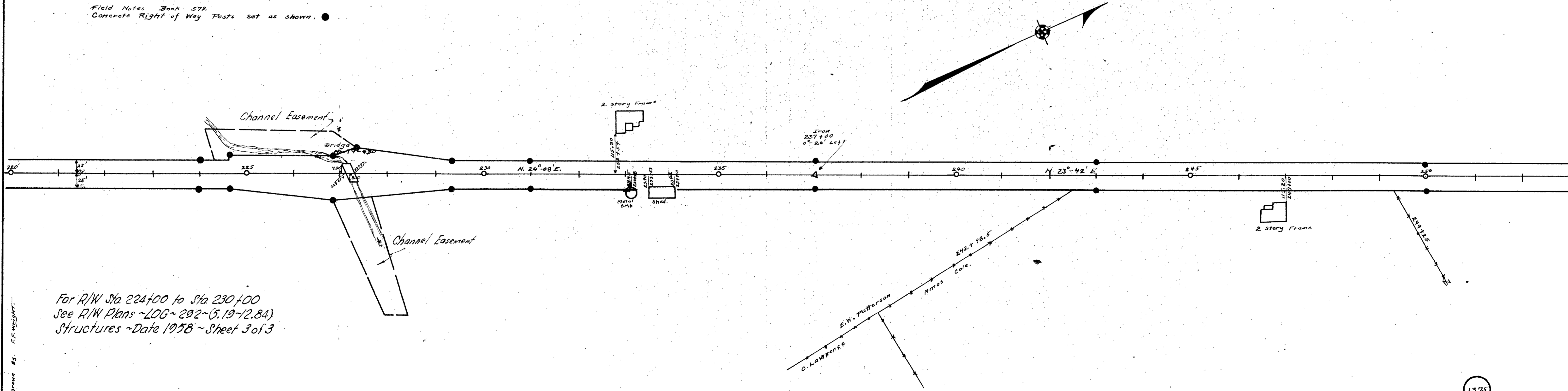
FOR R/W Sta. 138+00 to
 Sta. 150+00 See R/W Plans
 LOG-292-(5.19-12.84) Structures
 Date 1958 - Sheet 2 of 3



Surveyed by F.R. Wright
 Drawn by F.R. Wright

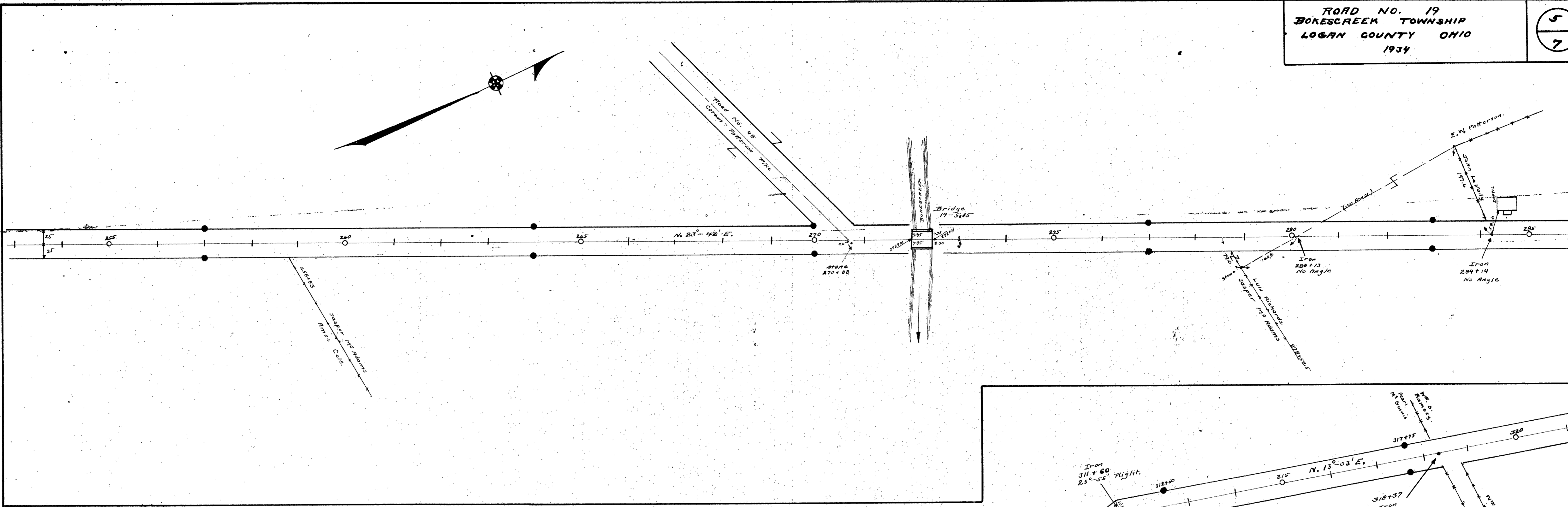


Field Notes Book 572
 Concrete Right of Way Posts set as shown.

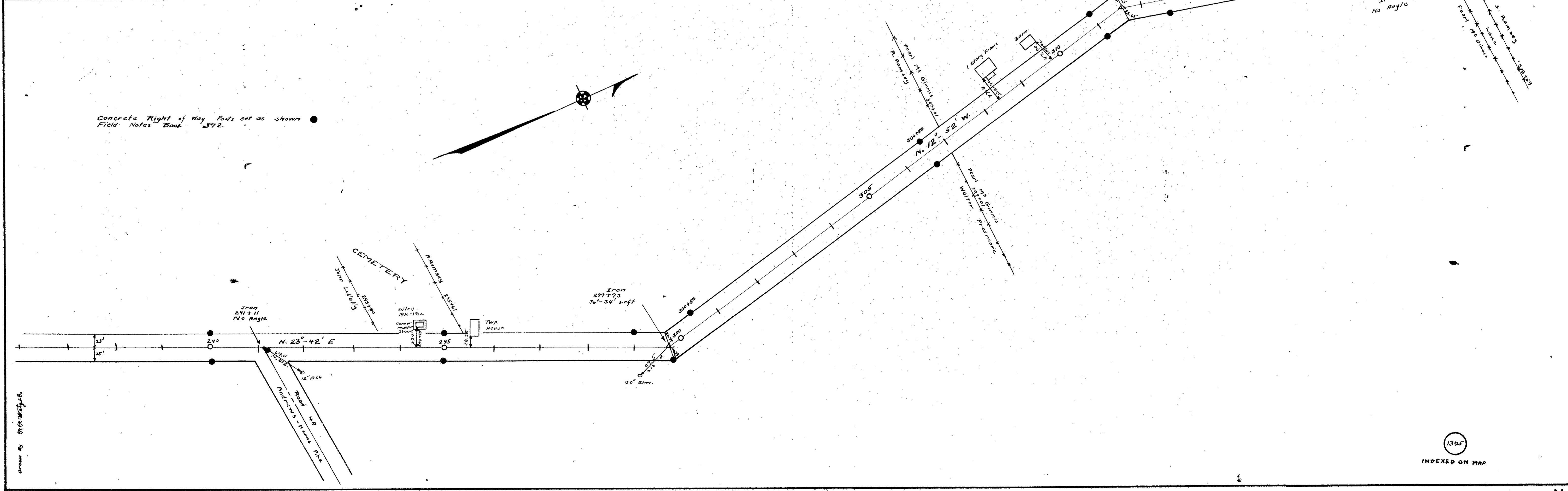


For R/W Sta 224+00 to Sta 230+00
 See R/W Plans ~LOG~ 202~(5.19-12.84)
 Structures ~Date 1938 ~Sheet 3 of 3

Drawn by R.F. WELSH

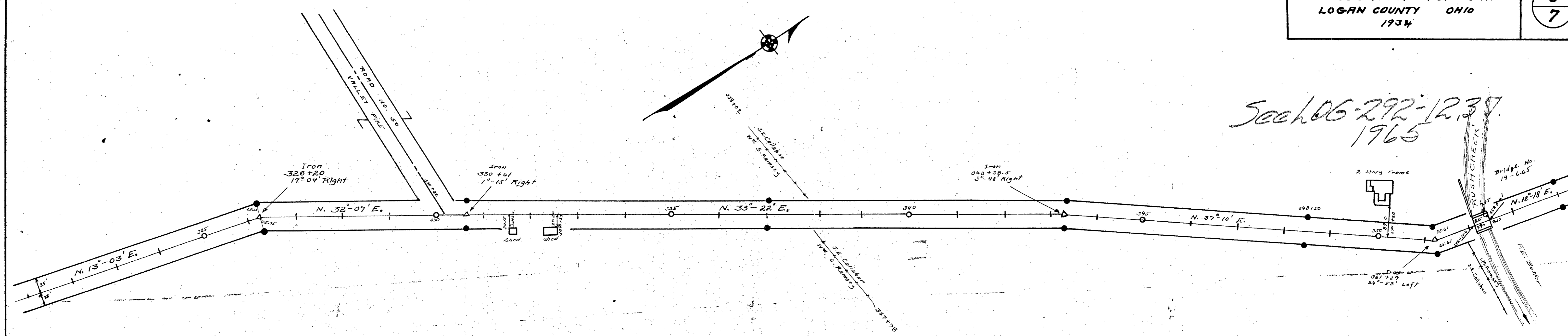


Concrete Right of Way Poles set as shown
 Field Notes Book 372

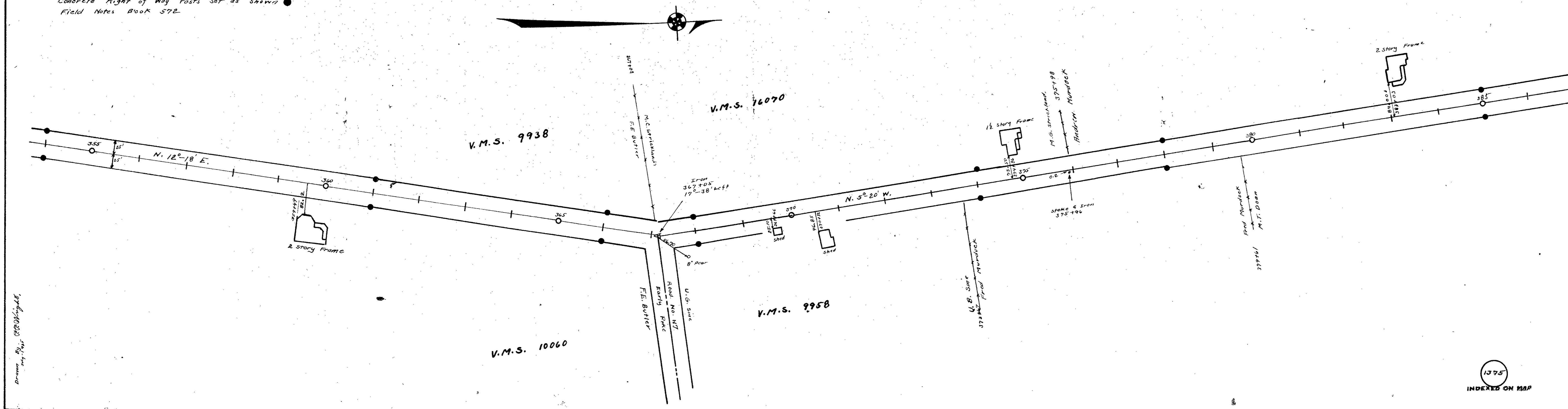


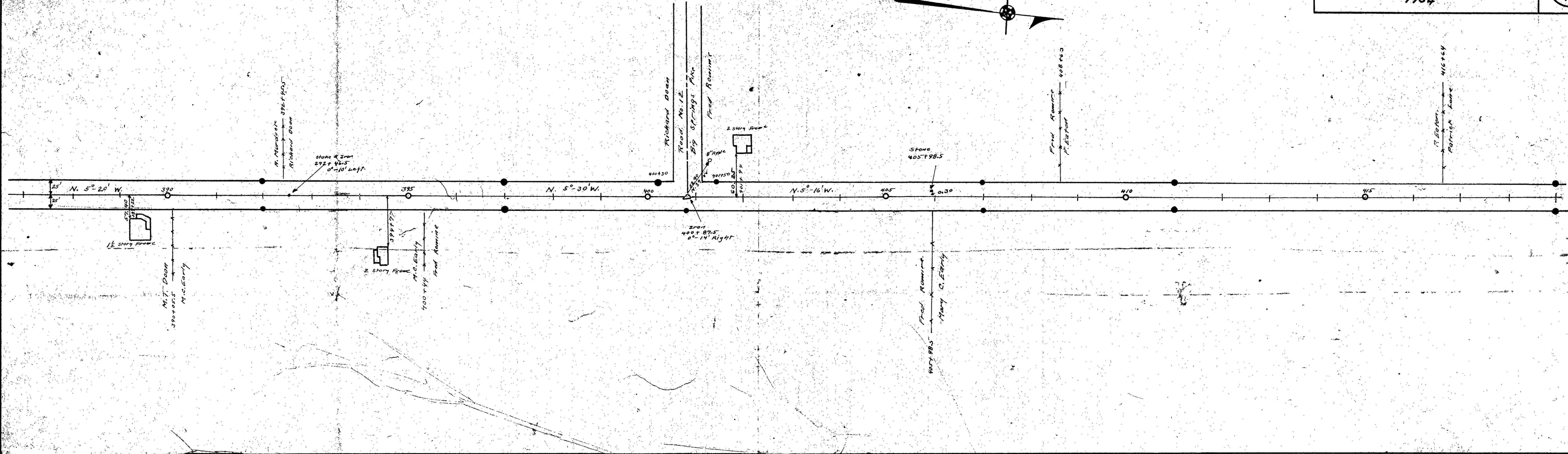
Drawn by G. H. [unclear]

See 06-292-12, 31
 1965

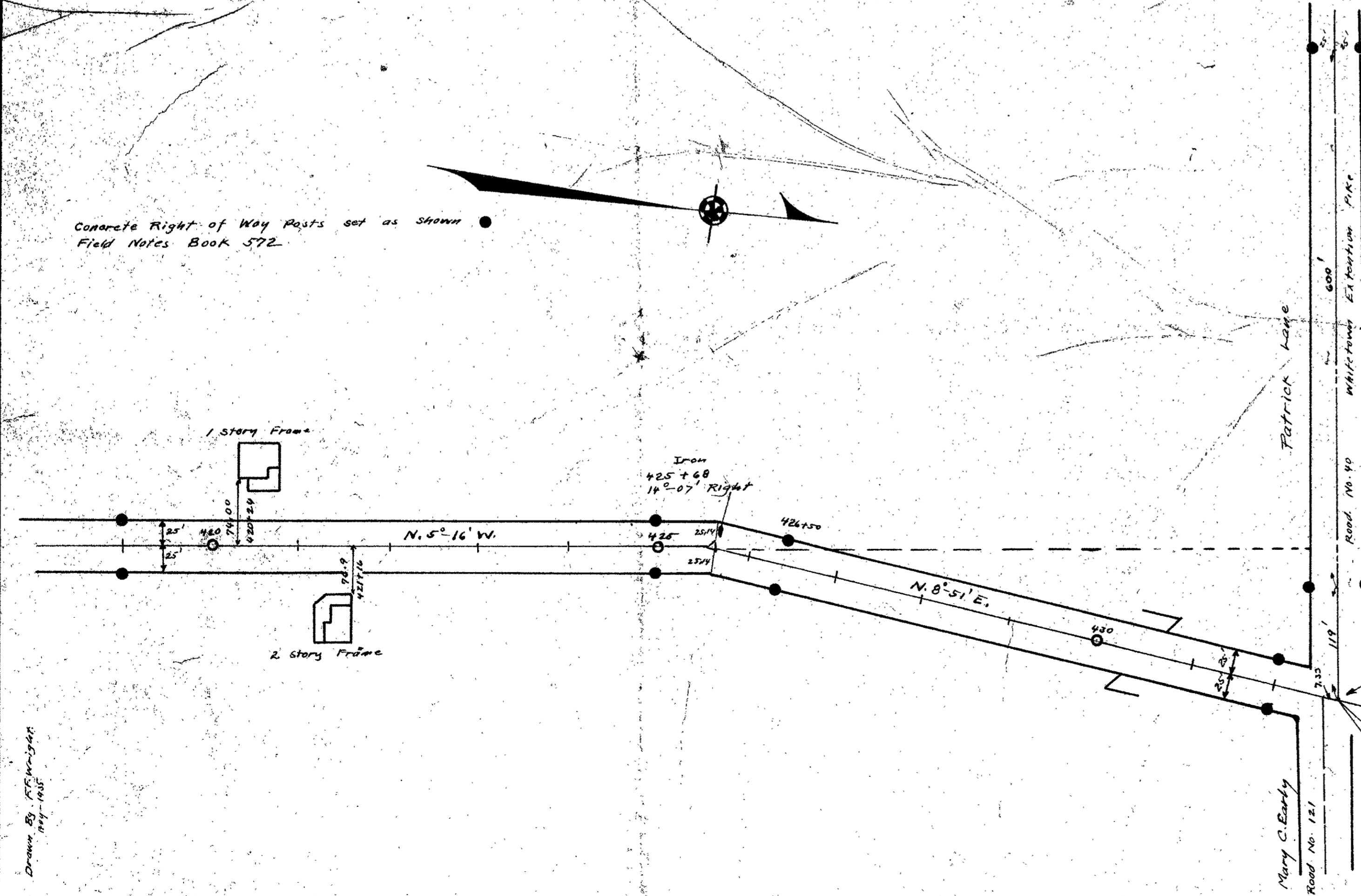


Concrete Right of Way Posts set as shown
 Field Notes Book 572





Concrete Right of Way Posts set as shown
 Field Notes Book 572



50' sta. 741+85 to 432+79 Pigeonry Rd Walnut Grove
 Pike - Pike Book H Page 76 (1876)
 60' Commissioned Journal Vol. 5 Page 161 (1837)

Length 43279 Feet.
 Length 8.20 Miles.

Drawn by J.P. McLaughlin
 July 1934