

Whitney Survey Bokescreek Township March 1965 1.06 Acres.

The following described land in Bokescreek Township, Logan County, Ohio and being in V.M.S. 9914

Beginning at an iron in the center of County Road Number 120 and in the center of County Road Number 20 also known as the Horton Pike.

Thence with the center line of said Road Number 20 N. $85^{\circ} - 00'$ E. ~~87/8/30/~~ 978.30 feet to a small iron, said small iron being the true beginning point of this survey. Thence turning ninety degrees to the left and measuring N. $5^{\circ} - 00'$ W. 200.00 feet to a stake. The last described line passing an iron pipe at the north side of the highway at 20.00 feet.

Thence turning ninth degrees to the right and measuring N, $85^{\circ} - 00'$ E. 230.00 feet to a stake.

Thence turning ninety degrees to the right and measuring S. $5^{\circ} - 00'$ E. 200.00 feet to a small iron in the center of said road Number 20. The last described line passing an iron pipe at the north side of the highway at 180.00 feet.

Thence with the center of said County Road Number 20 S. $85^{\circ} - 00'$ W. 230.00 feet to the place of beginning.

The above described tract contains 1.06 acres and is off of the south side of a 68.56 acre tract now in the name of Chester A. Potee.

cc
Logan County Engineer

68.56
- 1.06
67.50



3788 ID

REID 3-18-09 smjok

Lee Surveying and Mapping Co., Inc.

Land Surveys • Topography • Subdivisions • Construction Layout

117 N. Madriver St.
Bellefontaine OH 43311



Phone: (937) 593-7335
Fax: (937) 593-7444
surveys@lsmcinc.us

ROSS AND WHITNEY, CO-TRUSTEES 0.115 ACRE

Lying in Virginia Military Survey 9914, Bokescreek Township, Logan County, Ohio.

Being out of the Joyce L. Ross and E. Elizabeth Whitney, Co-Trustees, 1.06 acre tract as deeded and described in Official Record 906, Page 81 of the Logan County Records of Deeds and being more particularly described as follows:

Commencing on a 3/4 inch iron pipe found in a monument box on the southwest corner of Virginia Military Survey 9914 on the intersection of the center-lines of County Highway 120 and County Highway 20 at center-line Station 319+21.7 (Logan County Engineer's Field Book 702, Page 75).

THENCE, with the south line of Virginia Military Survey 9914 and the center-line of County Highway 20 (60 feet wide), N 83°-19'-47"E, a distance of 978.30 feet to a MAG nail set at the TRUE POINT OF BEGINNING, passing a railroad spike found at center-line Station 320+00 (Logan County Engineer's Field Book 702, Page 75) at 78.30 feet.

THENCE, with the lines of The Whitney Partnership, 67.5 acre tract (Vol. 394, Pg. 417, Tract II), the following two courses:

N 06°-40'-13"W, a distance of 200.00 feet to a point in a mound, passing 5/8 inch iron rods set at 30.00 feet and 163.00 feet.

N 83°-19'-47"E, a distance of 25.00 feet to a 5/8 inch iron rod set, passing a 5/8 inch iron rod set at 5.00 feet.

THENCE, S 06°-40'-13"E, a distance of 200.00 feet to a MAG nail set on the south line of Virginia Military Survey 9914 and the center-line of County Highway 20, passing a 5/8 inch iron rod set at 170.00 feet.

THENCE, with the south line of Virginia Military Survey 9914 and the center-line of County Highway 20, S 83°-19'-47"W, a distance of 25.00 feet to the point of beginning.

Containing 0.115 acre, of which 0.017 acre is within the highway right-of-way.

The basis for bearings is the south line of Virginia Military Survey 9914, being N 83°-19'-47"E, and all other bearings are from angles and distances measured in a field survey by Lee Surveying and Mapping Co., Inc. on August 13, 2009.

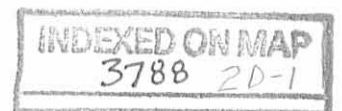
Description prepared by:

William K. Bruce
Professional Surveyor 7437
August 14, 2009



ORIGINAL STAMP IN GREEN

4841089



REC'D 8-18-09 Survey
Lee Surveying and Mapping Co., Inc.

Land Surveys • Topography • Subdivisions • Construction Layout

117 N. Madriver St.
Bellefontaine OH 43311



Phone: (937) 593-7335
Fax: (937) 593-7444
surveys@lsmcinc.us

**THE WHITNEY PARTNERSHIP
0.234 ACRE**

Lying in Virginia Military Survey 9914, Bokescreek Township, Logan County, Ohio.

Being out of The Whitney Partnership, 67.5 acre tract as deeded and described in Volume 394, Page 417, Tract II of the Logan County Records of Deeds and being more particularly described as follows:

Commencing on a 3/4 inch iron pipe found in a monument box on the southwest corner of Virginia Military Survey 9914 on the intersection of the center-lines of County Highway 120 and County Highway 20 at center-line Station 319+21.7 (Logan County Engineer's Field Book 702, Page 75).

THENCE, with the south line of Virginia Military Survey 9914 and the center-line of County Highway 20 (60 feet wide), N 83°-19'-47"E, a distance of 1208.30 feet to a MAG nail set at the TRUE POINT OF BEGINNING, passing a railroad spike found at center-line Station 320+00 (Logan County Engineer's Field Book 702, Page 75) at 78.30 feet, MAG nails set at 978.30 feet and 1003.30 feet and a railroad spike found at center-line Station 330+00 (Logan County Engineer's Field Book 702, Page 75) at 1078.63 feet.

THENCE, with the east line of the Joyce L. Ross and E. Elizabeth Whitney, Co-Trustees, 1.06 acre tract (O.R. 906, Pg. 81), N 06°-40'-13"W, a distance of 200.00 feet to a 5/8 inch iron rod set, passing a 5/8 inch iron rod set at 30.00 feet.

THENCE, N 83°-19'-47"E, a distance of 51.00 feet to a 5/8 inch iron rod set.

THENCE, S 06°-40'-13"E, a distance of 200.00 feet to a MAG nail set on the south line of Virginia Military Survey 9914 and the center-line of County Highway 20, passing a 5/8 inch iron rod set at 170.00 feet.

THENCE, with the south line of Virginia Military Survey 9914 and the center-line of County Highway 20, S 83°-19'-47"W, a distance of 51.00 feet to the point of beginning.

Containing 0.234 acre, of which 0.035 acre is within the highway right-of-way.

The basis for bearings is the south line of Virginia Military Survey 9914, being N 83°-19'-47"E, and all other bearings are from angles and distances measured in a field survey by Lee Surveying and Mapping Co., Inc. on August 13, 2009.



ORIGINAL STAMP IN GREEN

Description prepared by:

William K. Bruce

William K. Bruce
Professional Surveyor 7437
August 14, 2009

4841089



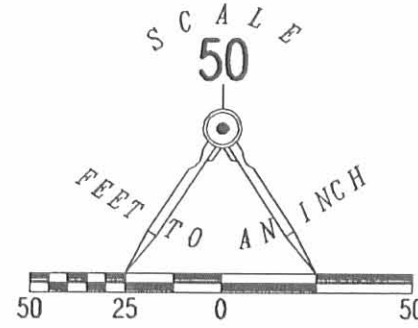
REC'D 8-18-09 SUM ON

2 WORKING DAYS
BEFORE YOU DIG
CALL TOLL FREE **800-362-2764**
OHIO UTILITIES PROTECTION SERVICE.

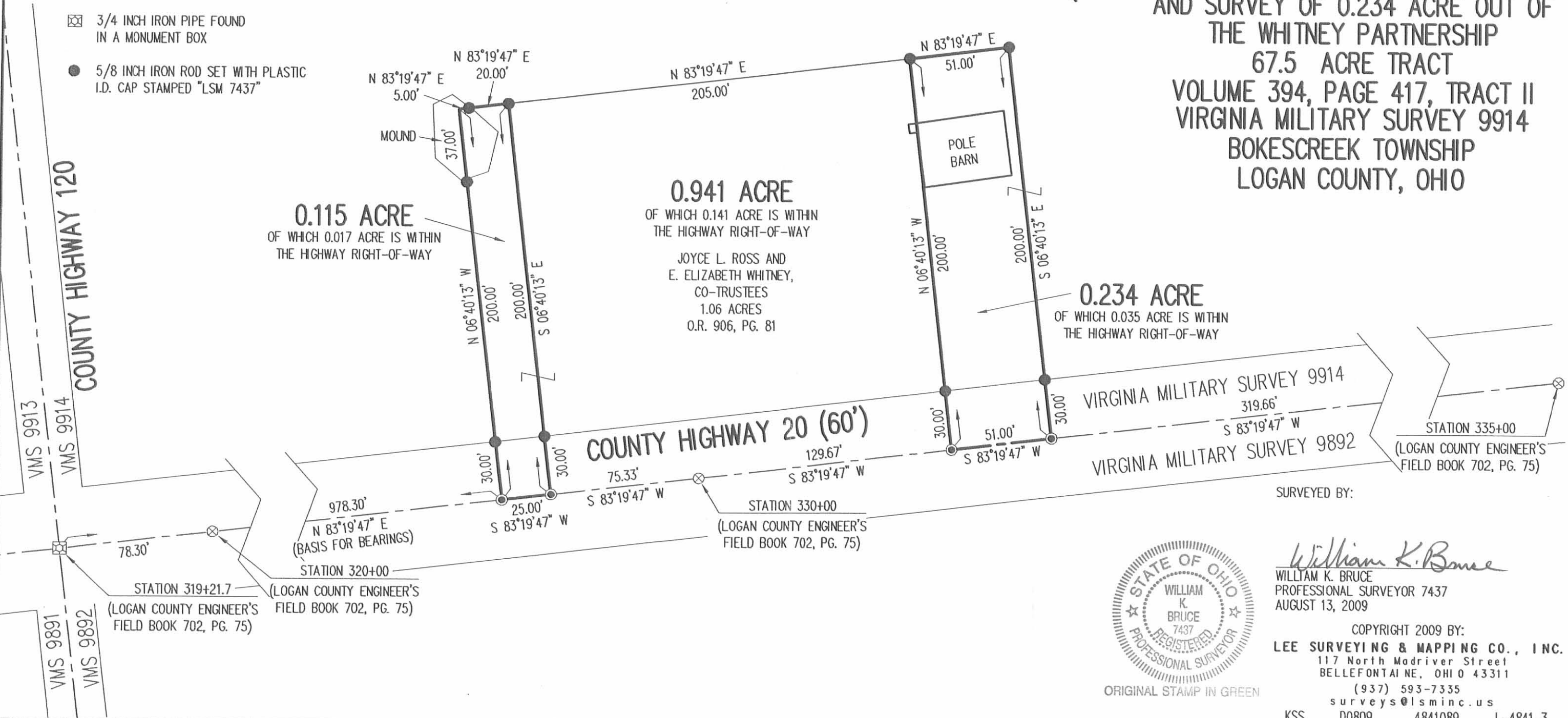
LEGEND:

- ⊗ RAILROAD SPIKE FOUND
- MAG NAIL SET
- ☒ 3/4 INCH IRON PIPE FOUND IN A MONUMENT BOX
- 5/8 INCH IRON ROD SET WITH PLASTIC I.D. CAP STAMPED "LSM 7437"

THE WHITNEY PARTNERSHIP
67.5 ACRES
VOL. 394, PG. 417
TRACT II



RETRACEMENT SURVEY AND SURVEY OF
0.115 ACRE OUT OF THE
JOYCE L. ROSS AND
E. ELIZABETH WHITNEY, CO-TRUSTEES
1.06 ACRE TRACT
OFFICIAL RECORD 906, PAGE 81
AND SURVEY OF 0.234 ACRE OUT OF
THE WHITNEY PARTNERSHIP
67.5 ACRE TRACT
VOLUME 394, PAGE 417, TRACT II
VIRGINIA MILITARY SURVEY 9914
BOKESCREEK TOWNSHIP
LOGAN COUNTY, OHIO



SURVEYED BY:

William K. Bruce
WILLIAM K. BRUCE
PROFESSIONAL SURVEYOR 7437
AUGUST 13, 2009



ORIGINAL STAMP IN GREEN

COPYRIGHT 2009 BY:
LEE SURVEYING & MAPPING CO., INC.
117 North Madriver Street
BELLEFONTAINE, OHIO 43311
(937) 593-7335
surveys@lsminc.us
KSS D0809 4841089 L-4841-3

INDEXED ON MAP
3788 2P