

FB 614

11-14-95 Wilgus  
Haines

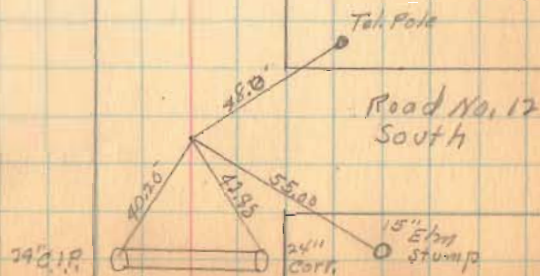
63

Road No-50 from No 12 E

4328

INDEXED ON MAP

See 1919





FB 614

Road No 50

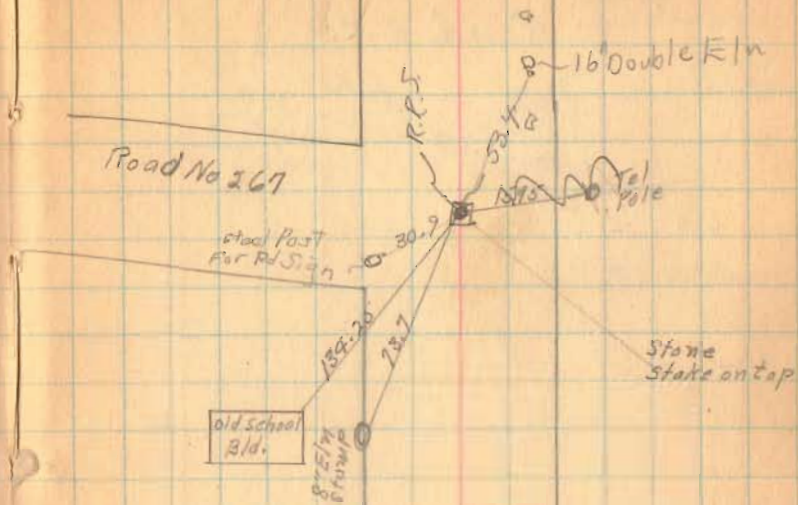
65



FB 614

Road No 50

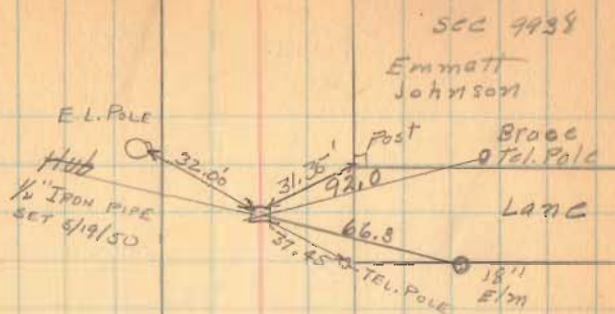
66



FB 614

Road # 50

67



SEC 9938  
Emmatt  
Johnson

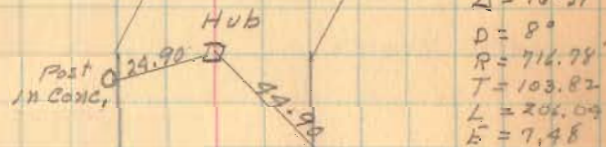
Foster Ramsey

SEC 9937

FB 614

Road No 50

68



staked  
11-16-95

Cole  
Wilgus  
Holmes

Hubs  
set for  
Mon. on  
R.C. & P.T.

FB 614

Road No 50

69

Lewis F  
Predmore

X X X X

Emmett Johnson

stone

X X X X

stone

FB 614

Road No 50

70

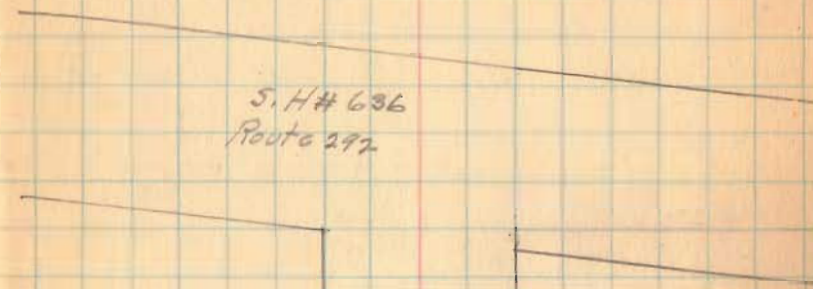




FB 614

Road No 50

71



S. H# 636  
Route 292

FB 703

C.H. No. 50

Rushcreek &amp; Bokescreek Twp.

R/W Mon Set for 60' Road

Sta. R.R. Spikes on E of R/W Mon.

30+00 R/W Mon. Set @ 30' from E

25+00 R/W Mon. Set @ 30' from E

20+00 R/W Mon. Set @ 30' from E

16+89.0 Iron Pin Found -  $\Delta = 0^{\circ}05'$  Rt - R/W Mon. Set

13+00 R/W Mon. Set @ 30' from E

6+00 R/W Mon. Set @ 30' from E

1+00 R/W Mon. Set @ 30' from E

0+00 Iron Pin Found

Aug-1957 - Surrey

Aug-1964 - Mon. Set

Shirk  
Silverstein  
Tevis  
Heminger

19

Imogene Porter

Boyd Stanfield

\* PB Sta. 32+65.7

~~\* PB Sta. 27+59~~

4328

INDEXED ON MAP

Sta 26+07

Sta 26+01

118.55

Geo. J. Ansley

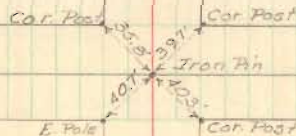
Harry Kramer Jr.

Sta 16+89.0 \* PB  
Iron Pin Found  
 $\Delta = 0^{\circ}05'$  Rt.

John E. Kinney

E. C.H. 110

E. C.H. 50



FB 703

C.H. 50 contd.

Sta.

65+00 R/W Mon. Set @ 30' from E

60+00 R/W Mon. Set @ 30' from E

55+00 R/W Mon. Set @ 30' from E

53+10.1 Iron Pin Found -  $\Delta = 0^{\circ} 09' 1/2''$  Lt.

50+00 R/W Mon. Set @ 30' from E

48+31.3 Iron Pin Found -  $\Delta = 0^{\circ} 12' 1/2''$  - Section Line

45+00 R.R. Spike Set on E but no R/W Mon. Set

40+00 R/W Mon. Set @ 30' from E

35+00 R/W Mon. Set @ 30' from E

19

John S. Watkins

\* R Sta. 64+88 \*



Choice Beck

John E. Kinney

Iron Pin Found  
Sta 53+10.1  
 $\Delta = 0^{\circ} 09' 1/2''$   
E.P. CMP

E. CH. 12  
To Walnut Grove

Choice Beck

\* R Sta. 50+26.3 \*

V.M.S. 9936

E. CH. 131

V.M.S. 10041

Iron on Stand  
Sta 48+31.3  
 $\Delta = 0^{\circ} 12' 1/2''$

Cemetery

V.M.S. 13199

V.M.S. 10631

\* R Sta. 47+06 \*

W<sup>o</sup> B. Green

Arrol B. Cost

\* R Sta. 40+45 \*

\* R Sta. 36+30 \*

Imogene Porter

Boyd Stanfield

FB 703

C.H. 50 cont'd.

Sta.

105+00 R/W Mon Set @ 30' Rt. Only

97+41.80 Ahead

97+39.66 Back P.T. - R/W Mon set @ 30' Lt. only

96+41.7 P.I. - Iron Pin Found -  $\Delta = 20^\circ - 28'$  Lt.

95+41.60 P.C. - R/W Mon Set @ 30' from  $\mathcal{L}$

90+00 R/W Mon Set @ 30' from  $\mathcal{L}$

85+00 R/W Mon Set @ 30' from  $\mathcal{L}$

81+43.1 Iron Pin Found - No Angle

80+00 R/W Mon. Set @ 30' from  $\mathcal{L}$

75+00 R/W Mon Set @ 30' from  $\mathcal{L}$

70+00 R/W Mon Set @ 30' from  $\mathcal{L}$

20

CURVE DATA

$\Delta = 20^\circ - 28'$   
 $D = 10^\circ - 20'$   
 $R = 554.48'$   
 $T = 100.10'$   
 $L = 198.06'$   
 $E = 8.96'$

Wellington T. Mitchell

V.M.S. 12201

Iron Pin Found  
 Sta. 96+41.7  
 $\Delta = 20^\circ - 28'$

Survey Cor. Stone

26+41.7

V.M.S. 13200

Odio D. Frey

John S. Watkins

C.H. 12

← To Big Springs

E. Pole

Iron Pin Found  
 Sta. 81+43.1  
 No Angle

John E. Kinney

FB 703

C. H. 50 cont'd.

150+00 R/W Mon Set @ 30' from L

145+00 R/W Mon Set @ 30' from L

140+00 R/W Mon Set @ 30' from L

135+00 R/W Mon Set @ 30' from L Rt. Only

130+00 R/W Mon Set @ 30' from L

125+00 R/W Mon. Set @ 30' from L

120+00 R/W Mon. Set @ 30' from L

116+07.6 Iron Pin Found -  $\Delta = 0^\circ - 05' \text{ Rt.}$

115+00 R/W Mon. Set @ 30' from L

110+00 R/W Mon. set @ 30' from L

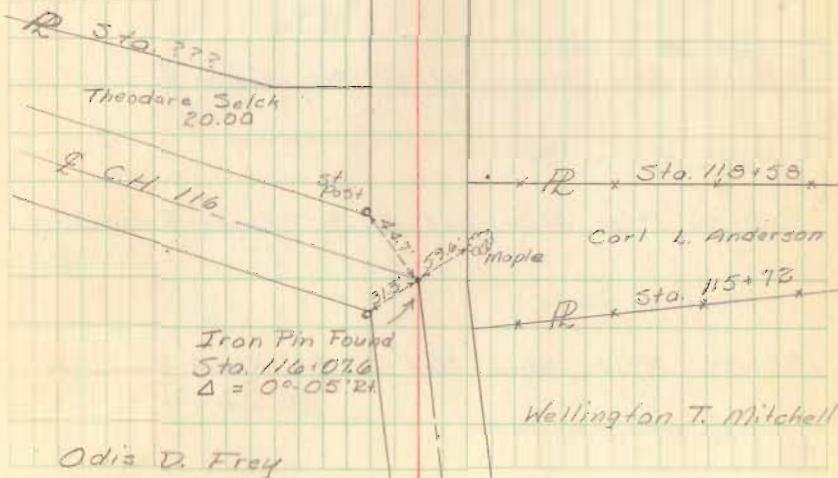
21

Bakescreek  
Bushcreek

Township  
Township

Richard T. Deubler

Elton E. Kinney



FB 703

C.H. 50 cont'd.

190+00 R/W Mon. Set @ 30' from E

187+39.2 Iron Pin Found - No Angle

185+00 R/W Mon. Set @ 30' from E Rt. Only

180+00 R/W Mon. Set @ 30' from E

175+00 R/W Mon. Set @ 30' from E

170+00 R/W Mon. Set @ 30' from E

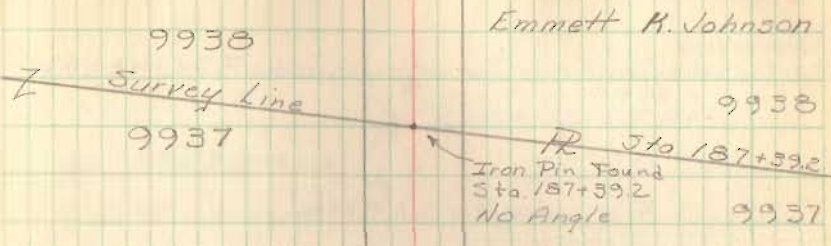
169+75.1 Iron Pin Found - No Angle

165+00 R/W Mon. Set @ 30' from E

160+00 R/W Mon. Set @ 30' from E

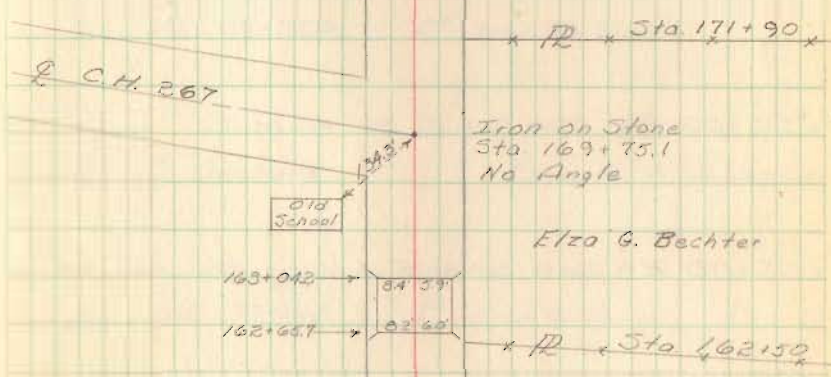
155+00 R/W Mon. Set @ 30' from E

22



Earl F. Fish

Donald C. Frederick



Elza G. Bechter

Theodore Jatch

Orville Gibson



Richard T. Deubler

Elton E. Kinney

FB 703

C.H. 50 cont'd.

Sta.

223+66.6 Ahead  
223+73.0 Back Correction sta of angle - Iron Pin -  $\Delta = 13^{\circ} 29' Rt.$

220+00 R/W Mon. Set @ 30' from E Rt. Only

215+00 R/W Mon. Set @ 30' from E

210+00 R/W Mon. Set @ 30' from E

205+00 R/W Mon. Set @ 30' from E

200+00 R.R. Spike Set on E but no R/W Mon. Set

195+25.0 Iron Pin Found - R/W Mon. Set -  $\Delta = 16^{\circ} 29' Rt.$

23

Wm S. Ramsey

Wilbur M. Ramsey

Iron Pin Set  
Sta. 223+66.6  
 $\Delta = 13^{\circ} 29' Rt.$

\* RR \* Sta. 223+58.6 \* RR \* Sta. 223+58.6 \*  
Maple Pear

Hazel Deardorff

Hazel Deardorff

Stone Found  
Sta. 214+61  
No Angle

\* RR \* Sta. 209+25.9 \*  
Iron Pin Found

Colvin E. Deskard

Emmett K. Johnson

\* RR \* Sta. 197+24.2 \*  
Iron Pin Found

Iron Pin Found  
Sta. 195+25.0  
 $\Delta = 16^{\circ} 29' Rt.$

Earl E. Fish

Sta.

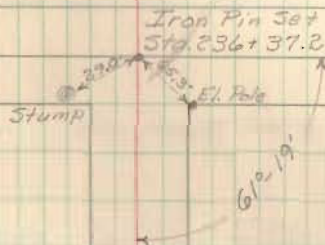
236+37.2 Iron Placed in E. S.P. 292

235+00 R/W Mon. Set @ 30' from E

230+00 R/W Mon. Set @ 30' from E

225+00 R/W Mon. Set @ 30' from E

E S.P. 292

W<sup>m</sup> S. RamseyW<sup>m</sup> S. Ramsey~~+ TD + Sta 224+87~~

Wilbur M. Ramsey