

Survey of CR48
~~Dushcreek Twp~~ Bakescreek
 SR292 To CR142

FB 703

12+66.40 7" I.P. Found 11' 0.7' E of 4

0+00 CR48 = 291+11 SR292

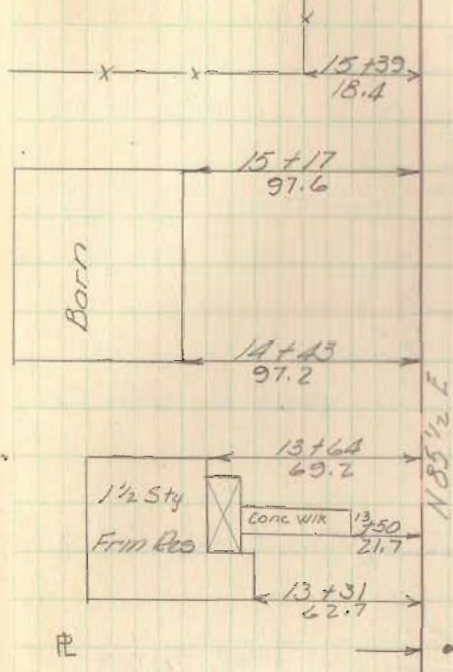
Dec 1964

CR48

Gaslin
 Cole
 Ricketts

39

Note: Rk. Nails on
 all stations

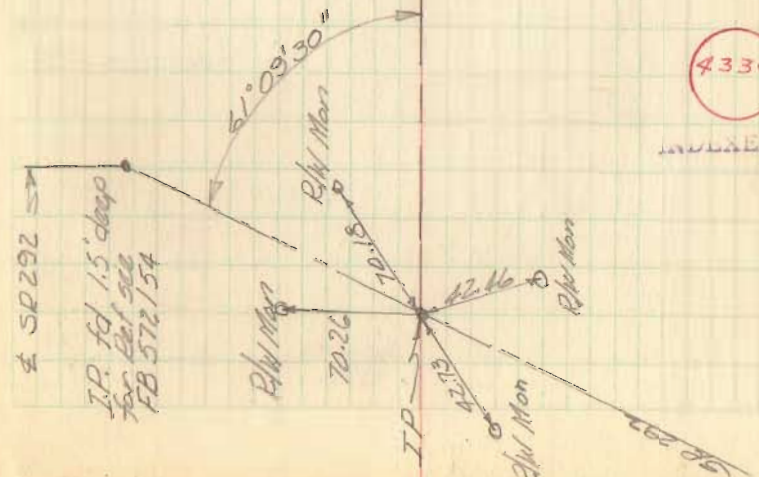


Mayme L. Lindamood

Harry C. Dugan

4330

INDEXED ON M



68

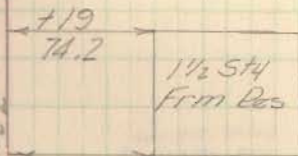
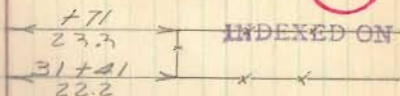
FB 703

Dec 1964

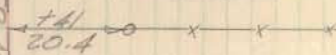
Las Gaslin
Roger Coliz
CH 48 Carl Ricketts 39

4330

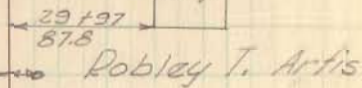
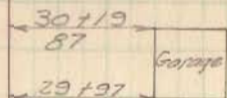
INDEXED ON MA



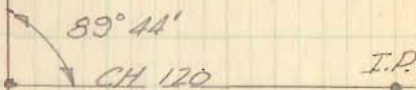
N 85 1/2 E



Orville Ramsey

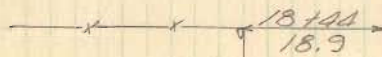


Robley T. Artis



Lindamood

Dugan



29 + 99.25 1" iron pin fd 0.25' pt of 4

27 + 57.30 1/2" iron pin found over stone (1.5' deep No Angle)

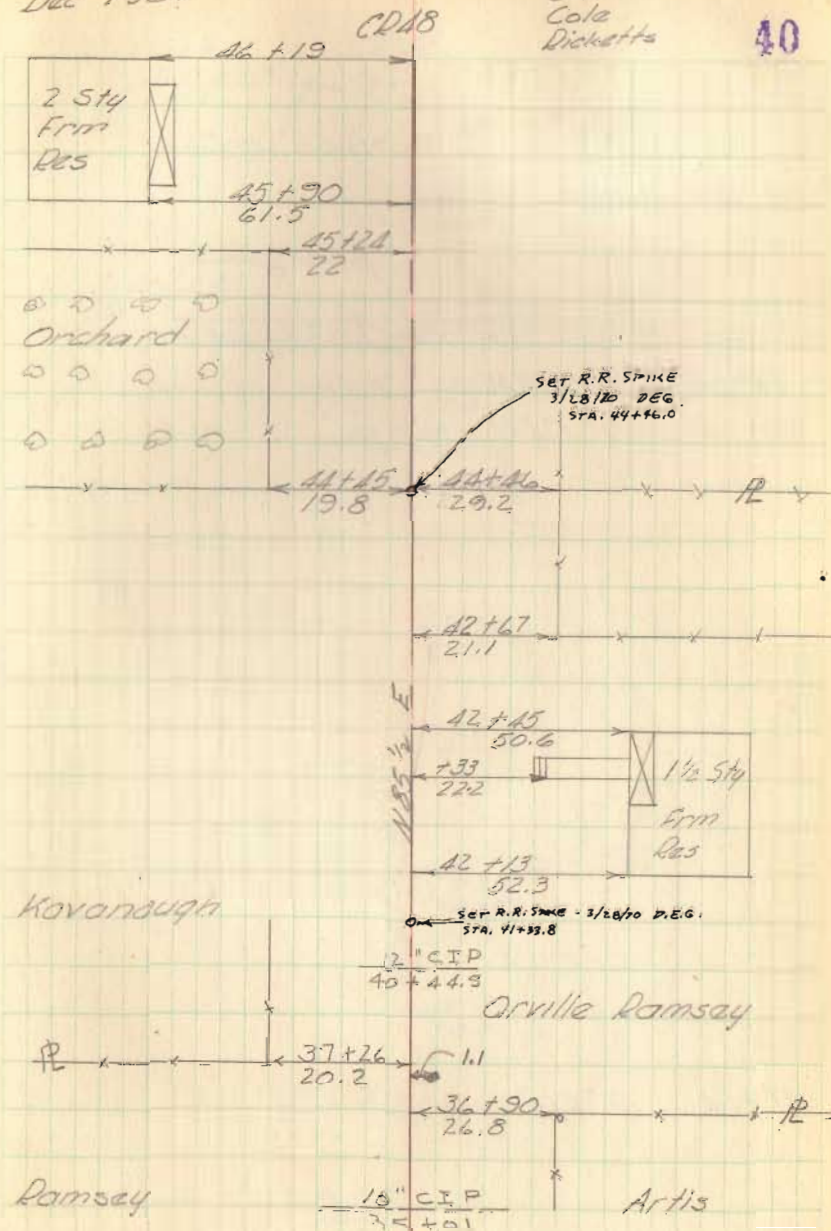
IP Set by D. Tevis 8/14/61
F.B. 761 Pg 76

FB 703

Dec 1964

Geaslin
Cole
Dickette

40



40+44.5 12" CIP

37+24.15 1" iron pin fd 1.1' pt of E

35+01 10" C.I.P.

FB 703

RR R/W Fence

Pluses taken to the inside of ea rail

RR R/W Fence

54+54 10" CIP

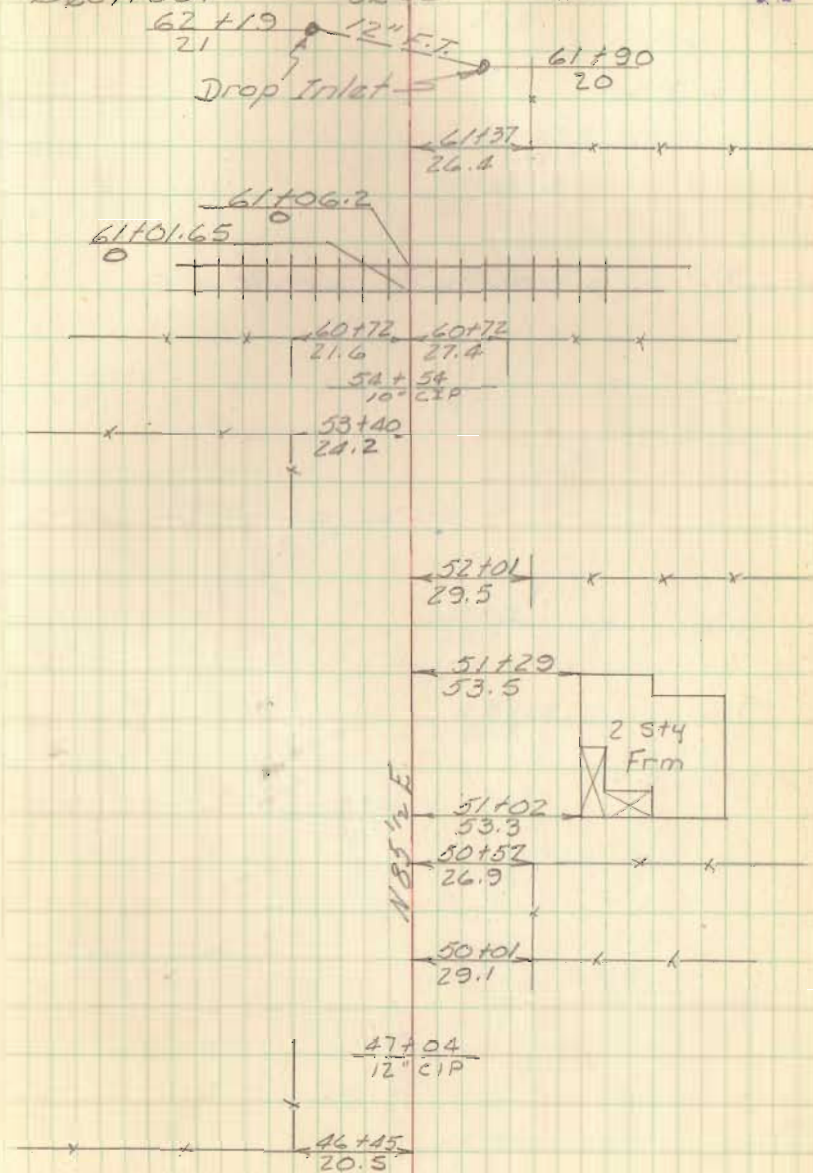
47+04 12" CIP

Dec. 1964

CR 18

Gasline
Cola
Dietetts

41



FB 703

74+92.2 1" Iron Pin fd 1.1' Pt. of E

71

Dec. 1964

CR48, 76+70

Gaaslin
Cola
Dicketts 42

41.8

Hog
House

76+12.5
10.7

75+85
24.7

71+33

71+33
24.9

12" Diser

71+33
20.5

24' CMP

71+26
17.1

71+31.5
17.8

68+63
25.1

68+28
51.8

1 1/2 Sty
Fritz

68+16
25.3

68+07
51.8

67+38
25.2

34.9

Garage

67+19.5
20.1

66+26
25

185 1/2 E

FB 703

End this survey.

94+40.90 1 1/2" Iron Pin found

Dec. 1964

Geeslin
Cola
Ricketts

43

