

FB 700

C. H. No. 123

Bakescreek Township

Existing R/W 40' - stakes

Set for 60' R/W by order of
Township Trustees.

10+00 Hubs Set for Mon's. - spk. on $\text{\$}$ (Per Set)

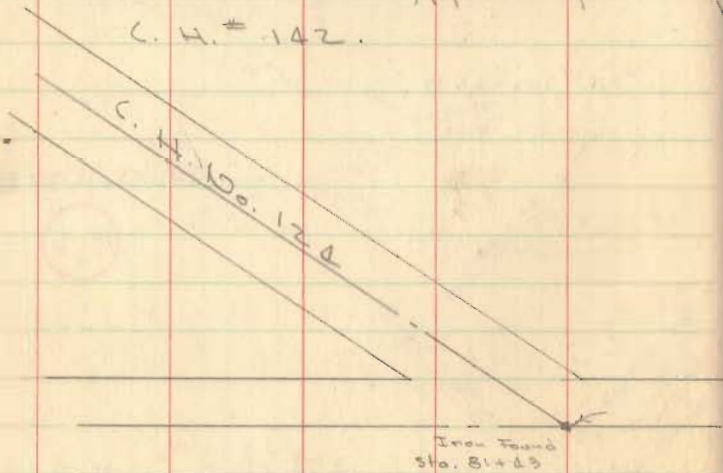
7+02.75 R.R. spk. set on $\text{\$}$ - for line

6+00 Hubs Set for Mon's. - spk. on $\text{\$}$ (Mon Set)

1+00 Hubs Set for Mon's. - spk. on $\text{\$}$ (Mark Set)

0+00 $\text{\$}$ C.H. # 142 @ Sta. 74+75.7

See F.B. # 497, pg. 64 for survey
C. H. # 142.



Dodson
Nichols
Touss
Gilbert

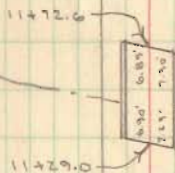
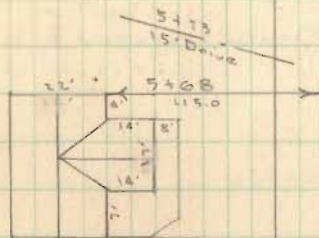
May 28, 1957

41

4373

INDEXED ON MAP

Eliabet Middleleworth



Pratt Post Truss
5/2 left forward skew
19.5' Clear Roadway
42.5' span

S. 18 1/2° E.

Nellie I. Kennedy



No. 142

FB 700

C. H. No. 123
Dokes Creek Township

36+09.9 Iron Set on County line - also
Hubs set for Mon's. on Co. line.

31+00 Hubs set for Mon's. - spt. on E

27+23.4 Hubs set for Mon's

26+00 spt. set on E

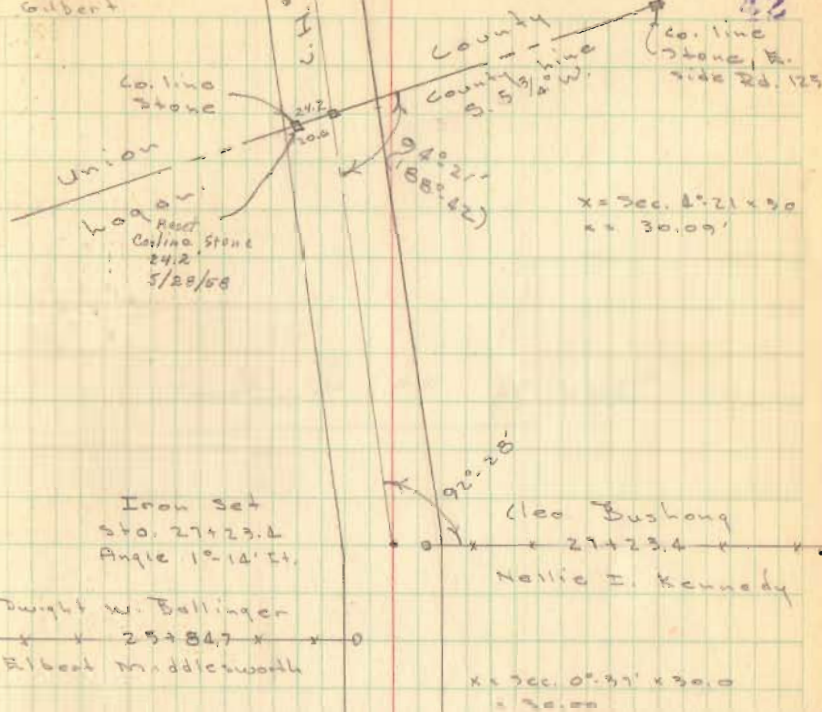
21+00 Hubs set for Mon's - spt. on E

16+00 Hubs set for Mon's - spt. on E ^(Marty)

Dodson
Nichols
Touss
Gilbert

May 29, 1957

42



See pg. 55 this book

