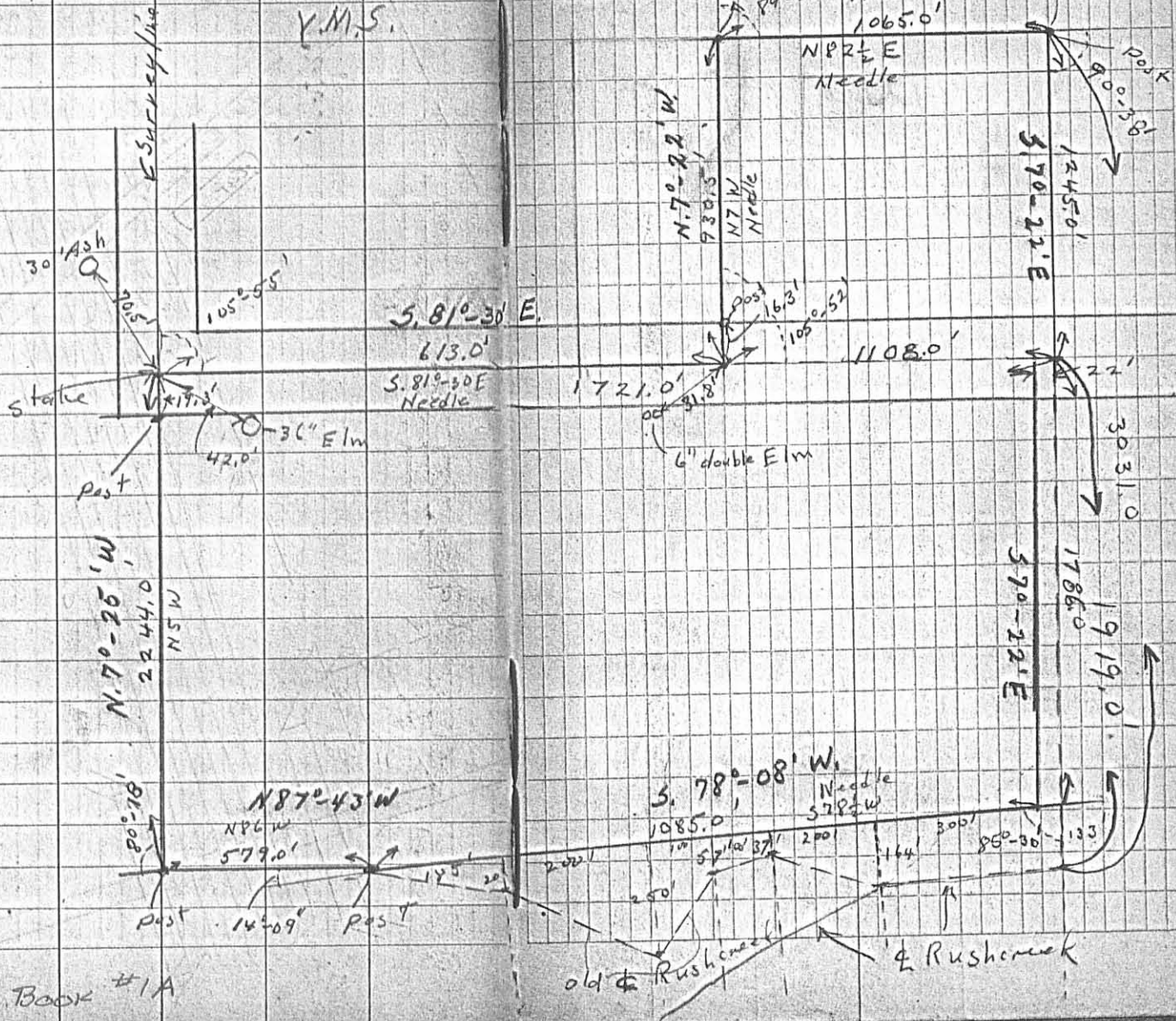


December 13, 1934

A8

David Logan Survey - Baker Creek Trwp

I.P. Core
E.K. Core



E.K. CORE BOOK #1A

6387 IP

Lee Surveying and Mapping Co.



Farm Surveys • Lot Surveys • Topography • Subdivisions • Construction Layout

855 EAST SANDUSKY AVENUE
BELLEFONTAINE, OHIO 43311

(513) 593-5780

CLAYTON M. LEE, P.S.
JEFFREY I. LEE, P.S.

KARL P. SIEG SURVEY

PAGE 1.

Lying in V.M.S. 9959, Bokescreek Township, Logan County, Ohio and being that same tract of land deeded and described in Volume 380, Page 691 of the Logan County Records of Deeds (shown as being 121.7 acres) and more particularly described as follows:

Beginning at an iron pipe found on the west line of V.M.S. 9959 marking the point of an angle in the center-line of County Highway 121.

THENCE, with the said center-line of County Highway 121, S 84°-10'-30" E, a distance of 612.24 feet to an iron spike set at a corner of subject property at the southeast corner of the R. Ansley 50 acre tract (Volume 254, Page 308, Tract 2).

THENCE, with the east line of said 50 acre tract, N 10°-00'-30" W, a distance of 932.55 feet to an iron rod set at the northwest corner of this survey.

THENCE, with the north line, N 79°-34'-25" E, a distance of 1063.43 feet to an iron rod set at the northeast corner on the west line of the J. Ramsey lands (Volume 380, Page 466).

THENCE, with said west line, S 10°-06'-10" E, a distance of 1242.48 feet to a spike set on the center-line of County Highway 121 at the northeast corner of a 22 foot lane along the west line of said Ramsey lands.

THENCE, with the center-line of County Highway 121, N 84°-10'-30" W, a distance of 22.88 feet to the northwest corner of said lane.

THENCE, with the west line of said lane, S 10°-05'-50" E, a distance of 2187.60 feet to an iron rod set at the center of the old channel of Rush-creek, passing the center of the present channel at 1934 feet.

THENCE, with the center of the old channel, the following twelve (12) bearings and distances:

- S 89°-24'-05" W, a distance of 230.00 feet.
- N 29°-52'-40" W, a distance of 191.23 feet (Center of present channel).
- N 72°-52'-55" W, a distance of 212.52 feet.
- S 76°-13'-35" W, a distance of 49.93 feet.
- S 42°-36'-50" W, a distance of 45.49 feet.
- S 1°-58'-05" W, a distance of 220.0 feet.
- N 88°-01'-55" W, a distance of 130.0 feet.
- N 49°-01'-55" W, a distance of 210.0 feet.
- N 83°-43' W, a distance of 167.62 feet.
- S 5°-44'-10" W, a distance of 865.78 feet.
- S 27°-59'-40" W, a distance of 144.02 feet.
- S 67°-29'-20" W, a distance of 275.47 feet to an iron rod set on the

west line of V.M.S. 9959.

INDEXED ON MAP

6387 2D-1

Lee Surveying and Mapping Co.



Farm Surveys • Lot Surveys • Topography • Subdivisions • Construction Layout

855 EAST SANDUSKY AVENUE
BELLEFONTAINE, OHIO 43311

(513) 593-5780

CLAYTON M. LEE, P.S.
JEFFREY I. LEE, P.S.

PAGE 2.

THENCE, with the said west line of V.M.S. 9959, N 10°-11'-10" W, a distance of 3351.62 feet to the point of beginning. Containing 118.97 acres., subject to all legal highway easements of record.

Last previous deed reference: Volume 380, Page 691.



Surveyed by:

A handwritten signature in cursive script that reads "Clayton M. Lee". The signature is written over a horizontal line.

Clayton M. Lee
Reg. Surveyor No. 6181
12-31-79

INDEXED ON MAP
6387 2D-2



KARL P. SIEG
118.97 ACRES (Deed=121.7 Ac.)
VOL. 380, PG. 691

J. Ram. 24
Vol. 380, Pg. 466



SCALE ~ 1" = 300'

SURVEY OF THE KARL SIEG LANDS
LOCATED IN V.M.S. NO. 9959
BOKESCREEK TOWNSHIP
LOGAN COUNTY, OHIO

By: Clayton M. Lee
Clayton M. Lee
Reg. Surveyor No. 6181
12-31-79



63817 2P
INDEXED ON MAP

SCALE:	APPROVED BY	DRAWN BY
DATE:		
		DRAWING NUMBER
		L-668-2

LEE SURVEYING & MAPPING CO.
855 E. Sandusky Ave.
BELLEFONTAINE, OHIO 43311
(513) 593-5780