

The following described real estate situated in the Township of Bokescreek, County of Logan, State of Ohio and being a part of Virginia Military Survey's No. 7161 and 10060 and being more particularly described as follows:

Beginning at a concrete monument in the centerline of C. H. No. 117 at Station No. 60 + 89.0 as shown in Logan County Engineers Field Book No. 639 Page 15, said concrete monument being the northeast corner to V. M. S. No. 10060 and the northwest corner to V. M. S. No. 7161;

Thence with the centerline of C. H. No. 117, N. 83° 00.0' E. 1,069.64 feet to a Iron Bar found at the intersection of the centerlines of C. H. No. 117 and C. H. No. 142, passing through a concrete monument at the southeast corner of V. M. S. No. 9958 and the southwest corner to V. M. S. No. 9959 at 453.99 feet;

Thence with the centerline of C. H. No. 142, S. 6° 53.98' E. 2,781.69 feet to a Cap and Nail found at the northeast corner to Charles O. Payne's present 4.588 Acre tract;

Thence with the north line of Payne's tract and the north line of Billie Wingfield's 75.412 Acre tract, S. 82° 27.1' W. 1,061.06 feet to an iron bar set in the west line of V. M. S. No. 7161 and the east line of V. M. S. No. 10060, which is also the east line of Billie Wingfield's present 22.80 Acre tract;

Thence with said V. M. S. Line, N. 7° 04.6' W. 461.48 feet to an iron bar set at the northeast corner to Wingfield's tract;

Thence with Wingfield's north line, S. 83° 20.9' W. 527.96 feet to an iron bar set in the east line of Robert Slabaugh's present 164.13 Acre tract;

Thence with Slabaugh's property line the following three courses and distances, N. 7° 36.4' W. 170.79 feet to an iron bar set, S. 82° 58.0' W. 775.13 feet to an iron bar set and N. 7° 44.0' W. 2,156.75 feet to a stone found in the centerline of C. H. No. 117 at Slabaugh's northeast corner; and in the north line of V. M. S. No. 10060;

Thence with the centerline of C. H. No. 117 and the north line of V. M. S. No. 10060, N. 82° 58.9' E. 1,329.35 feet to the place of beginning, containing 135.446 Acres, more or less.

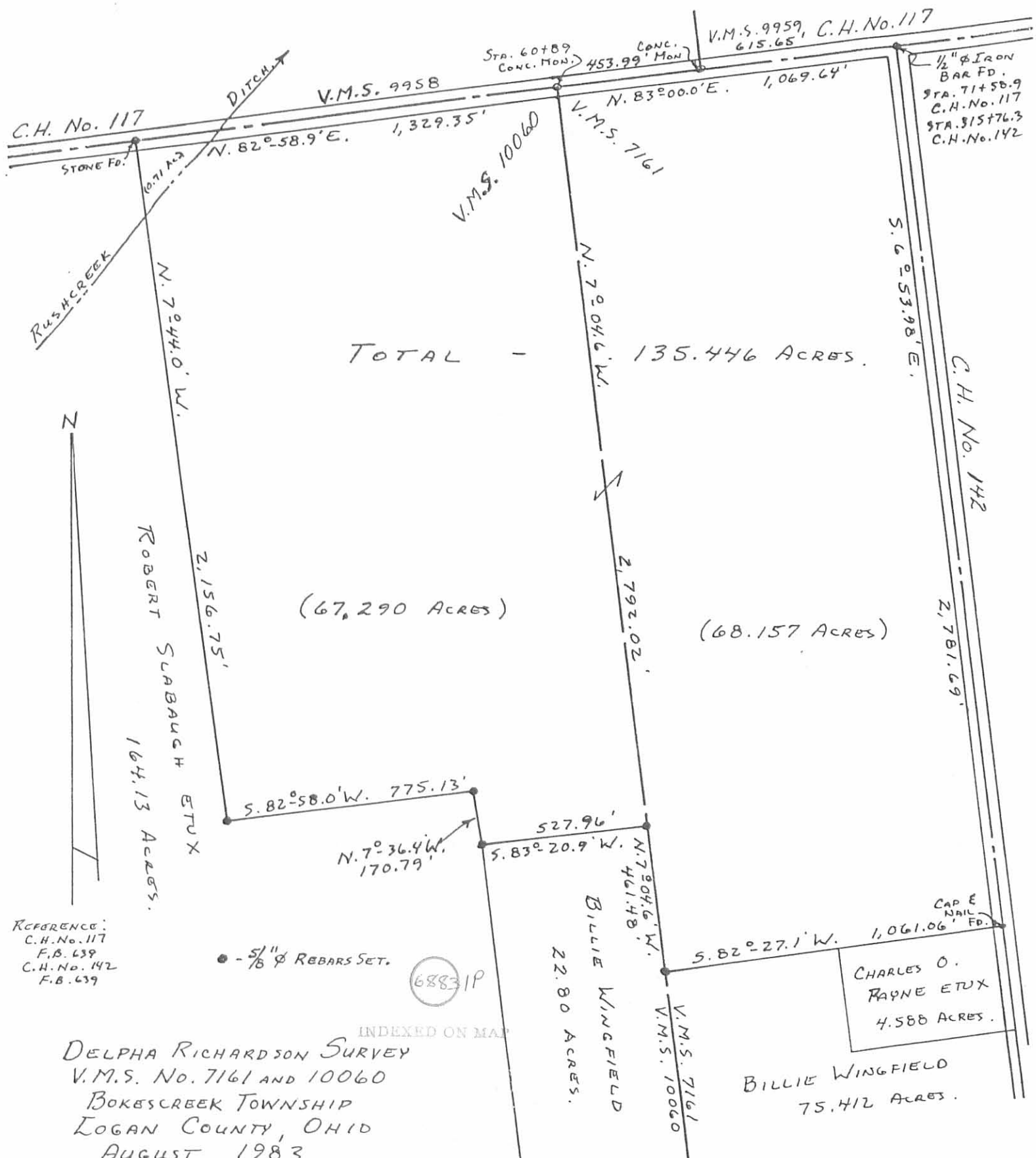
Of the above described tract, there is 68.157 Acres in V. M. S. No. 7161 and 67.290 Acres in V. M. S. No. 10060.

I hereby certify that this is a true and accurate description of a survey made by me in August, 1983.

6883 1D

INDEXED ON MAP

Daniel E. Gilbert
Daniel E. Gilbert, P.S.
Reg. Sur. No. 5402
1041 N. Main St.
Bellefontaine, Ohio 43311



REFERENCE:
 C.H. No. 117
 F.B. 639
 C.H. No. 142
 F.B. 639

INDEXED ON MAP
 DELPHA RICHARDSON SURVEY
 V.M.S. No. 7161 AND 10060
 BOKESCREEK TOWNSHIP
 LOGAN COUNTY, OHIO
 AUGUST 1983

SCALE: 1" = 400'

SURVEYED AND PLATTED BY:
 DANIEL E. GILBERT, P.S.
 REG. SUR. No. 5402
 1041 N. MAIN ST.
 BELLEFONTAINE, OHIO 43311