



Lee Surveying and Mapping Co.



Farm Surveys • Lot Surveys • Topography • Subdivisions • Construction Layout

143 EAST COLUMBUS AVENUE
BELLEFONTAINE, OHIO 43311

(513) 593-7335
(513) 593-5780

CLAYTON M. LEE, P.S.
JEFFREY I. LEE, P.S.

DON HAYS (3.01 ACRES)

Lying in V.M.S. 7995, Bokescreek Township, Logan County, Ohio.

Being out of that original 1448.549 acre tract in the name of Don Hays as deeded and described in O.R. 66, Page 231 of the Logan County Records of Deeds and being more particularly described as follows:

Beginning at a railroad spike set on the center-line of County Highway 26 (Greenville Treaty Line), S 84°-30' W, a distance of 1759.12 feet westerly, with said treaty line, from the center-line of County Highway 120.

THENCE, S 8°-00' E, a distance of 350.00 feet to a 5/8" iron rod (set).

THENCE, parallel to the highway, S 84°-30' W, a distance of 375.00 feet to a 5/8" iron rod (set).

THENCE, N 8°-00' W, a distance of 350.00 feet to a railroad spike set on the center-line of County Highway 26, a distance of 151.48 feet, easterly, with said center-line, from a railroad spike found at Station 145+00 (Field Book 701, Page 44- Logan County Engineer).

THENCE, with said center-line, N 84°-30' E, a distance of 375.00 feet to the point of beginning.

Containing 3.01 acres.

This description prepared from an actual field survey.
Basis for bearings: Greenville Treaty Line = N 84°-30' E.

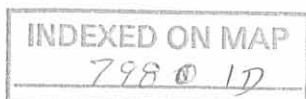
Prepared by:

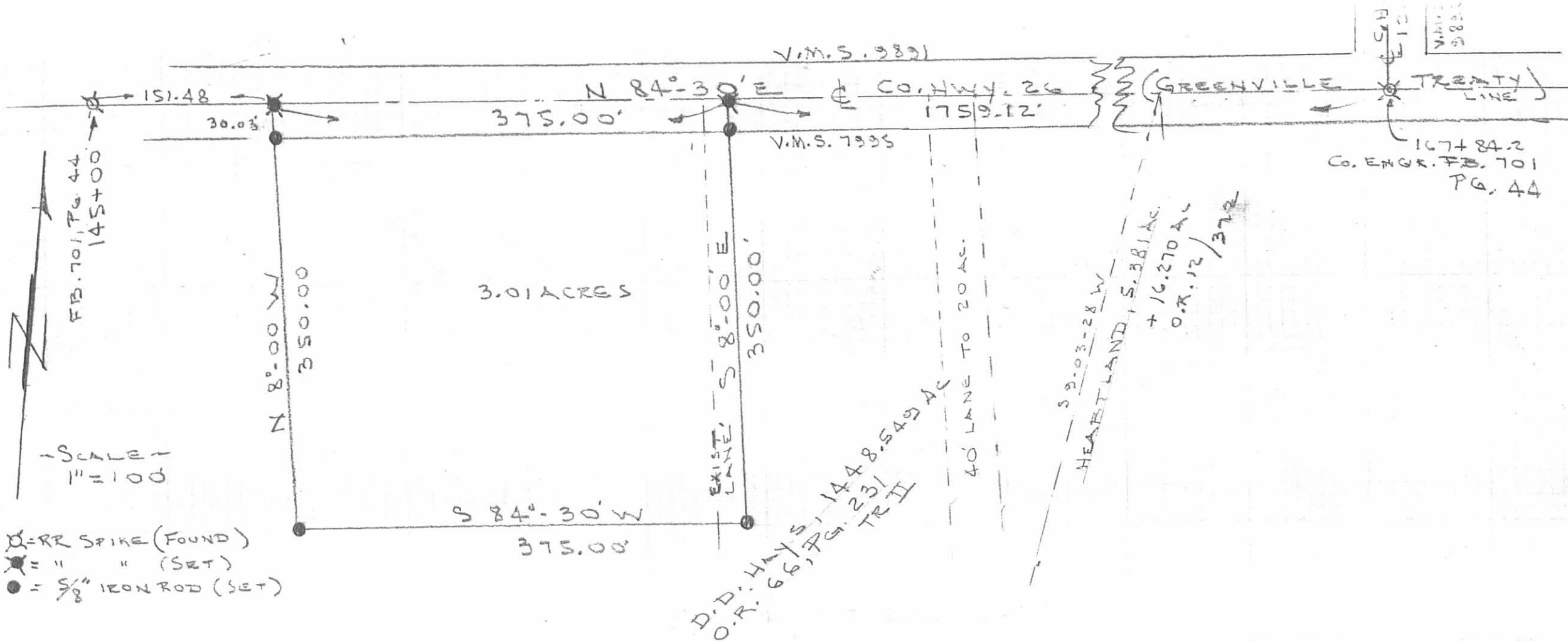
Clayton M. Lee
Clayton M. Lee
Registered Professional Surveyor No. 6181
January 11, 1990



ORIGINAL STAMP IN GREEN

L-1779





SURVEY OF 3.01 ACRES OUT OF THE
 D.D. HAYS 1448.549 ACRES (O.R. 66, PG. 231)
 V.M.S. 7995, BOXES CREEK TWP.,
 LOGAN COUNTY, OHIO

By: *[Signature]*



JEFFREY I. LEE
 REG. SURVEYOR 6359
 JAN. 9, 1990

INDEXED ON MAP
 7980 1P

L-1779-4