

REV ID 10-28-08 SWM OK

# Lee Surveying and Mapping Co., Inc.

Land Surveys • Topography • Subdivisions • Construction Layout

117 N. Madriver St.  
Bellefontaine OH 43311



Phone: (937) 593-7335  
Fax: (937) 593-7444

## ENGLE AND MCGINNIS 2.000 ACRE

Lying in Virginia Military Survey 9914, Bokescreek Township, Logan County, Ohio.

Being out of the Judy Mae Engle and William McGinnis 89.29 acre tract as deeded and described in Official Record 925, Page 510 of the Logan County Records of Deeds and being more particularly described as follows:

Commencing on a 1/2 inch iron rod found in a monument box at center-line Station 27+57.30 (Logan County Engineer's Field Book 703, Page 39) on the intersection of the center-lines of County Highway 48 and County Highway 120.

THENCE, with the center-line of County Highway 48 (60 feet wide), N 83°-26'-45"E, a distance of 2235.93 feet to a railroad spike set at the TRUE POINT OF BEGINNING.

THENCE, with the center-line of County Highway 48, N 83°-26'-45"E, a distance of 182.00 feet to a railroad spike set.

THENCE, S 05°-22'-28"E, a distance of 478.80 feet to a 5/8 inch iron rod set, passing a 5/8 inch iron rod set at 30.00 feet.

THENCE, S 83°-26'-45"W, a distance of 182.00 feet to a 5/8 inch iron rod set.

THENCE, N 05°-22'-28"W, a distance of 478.80 feet to the point of beginning, passing a 5/8 inch iron rod set at 448.80 feet.

Containing 2.000 acres, of which 0.125 acre is within the highway right-of-way.

The basis for bearings is the center-line of County Highway 48, being N 83°-26'-45"E, and all other bearings are from angles and distances measured in a field survey by Lee Surveying and Mapping Co., Inc. on October 24, 2008.

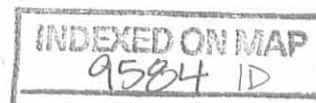


ORIGINAL STAMP IN GREEN

Description prepared by:

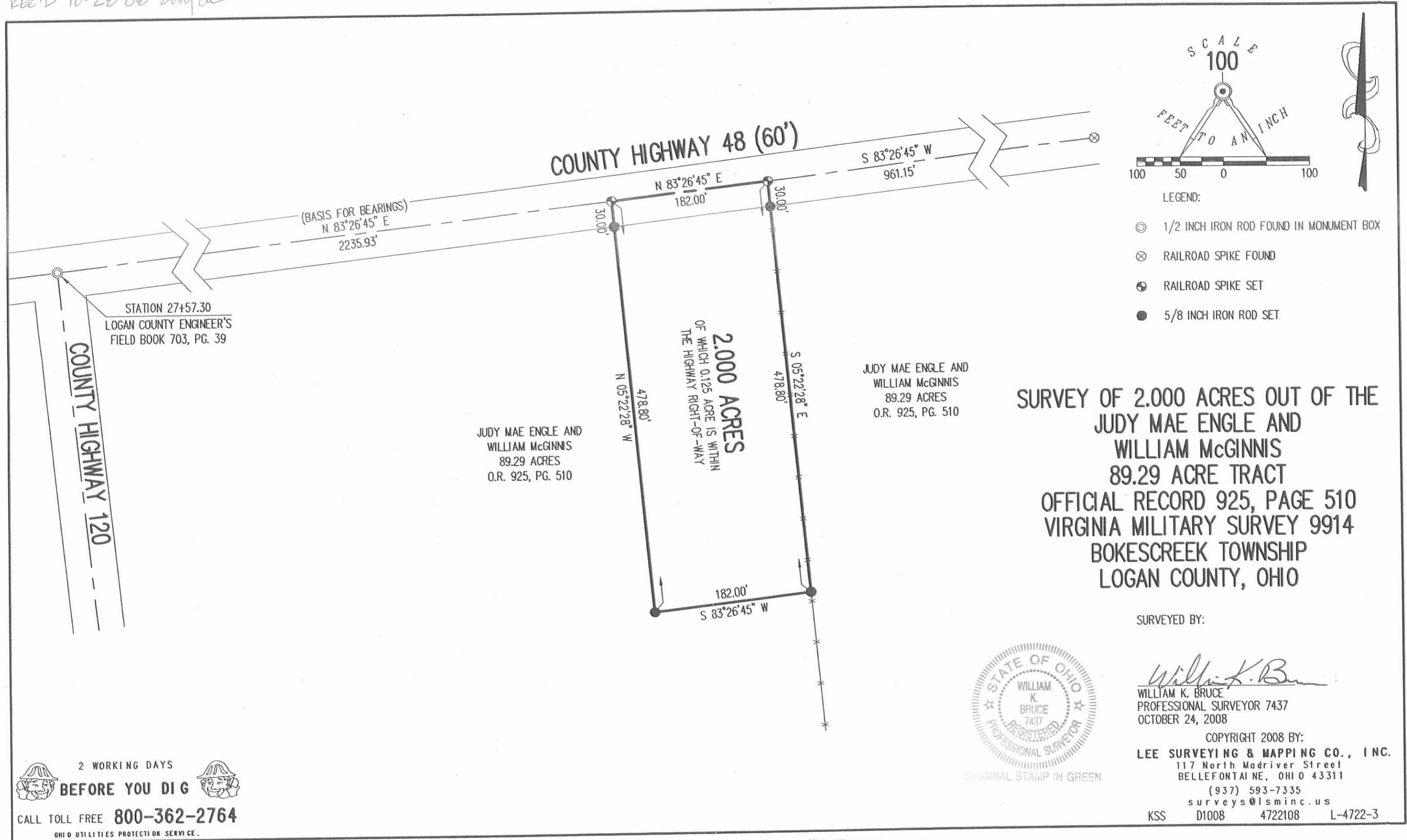
A handwritten signature in black ink that reads 'William K. Bruce'.

William K. Bruce  
Professional Surveyor 7437  
October 27, 2008



4722108

REV'D 10-28-00 SMJ/BL



**SURVEY OF 2.000 ACRES OUT OF THE  
JUDY MAE ENGLE AND  
WILLIAM MCGINNIS  
89.29 ACRE TRACT  
OFFICIAL RECORD 925, PAGE 510  
VIRGINIA MILITARY SURVEY 9914  
BOKESCREEK TOWNSHIP  
LOGAN COUNTY, OHIO**

SURVEYED BY:

*William K. Bruce*

WILLIAM K. BRUCE  
PROFESSIONAL SURVEYOR 7437  
OCTOBER 24, 2008



ORIGINAL STAMP IN GREEN

COPYRIGHT 2008 BY:  
**LEE SURVEYING & MAPPING CO., INC.**  
117 North Madriver Street  
BELLEFONTAINE, OHIO 43311

(937) 593-7335  
surveys@lsminc.us

KSS D1008 4722108 L-4722-3

2 WORKING DAYS  
**BEFORE YOU DIG**  
CALL TOLL FREE **800-362-2764**  
OHIO UTILITIES PROTECTION SERVICE.

INDEXED ON MAP  
9504 1P