

FB 713

C.E. 48
Bokescreek Twp.
Logan Co., Ohio

curve data

$\Delta = 15^\circ - 10' - 04''$ Rt.

$R = 1431.05'$

$T = 196.90'$

$L = 391.34'$

P.I.
Fd. $\frac{3}{4}$ " iron bar
94+40.90

Fd. $\frac{1}{2}$ " iron bar
243+79.2
F.Bk. # 439, pg. 400

C.R. 487

~ C.R. 142

C.R. 487

Note: see pg. 36

Set 1" square head
bolt with $1\frac{1}{8}$ " flange
over stone
182+59
F.Bk. 459, pg. 46

C.E. 207

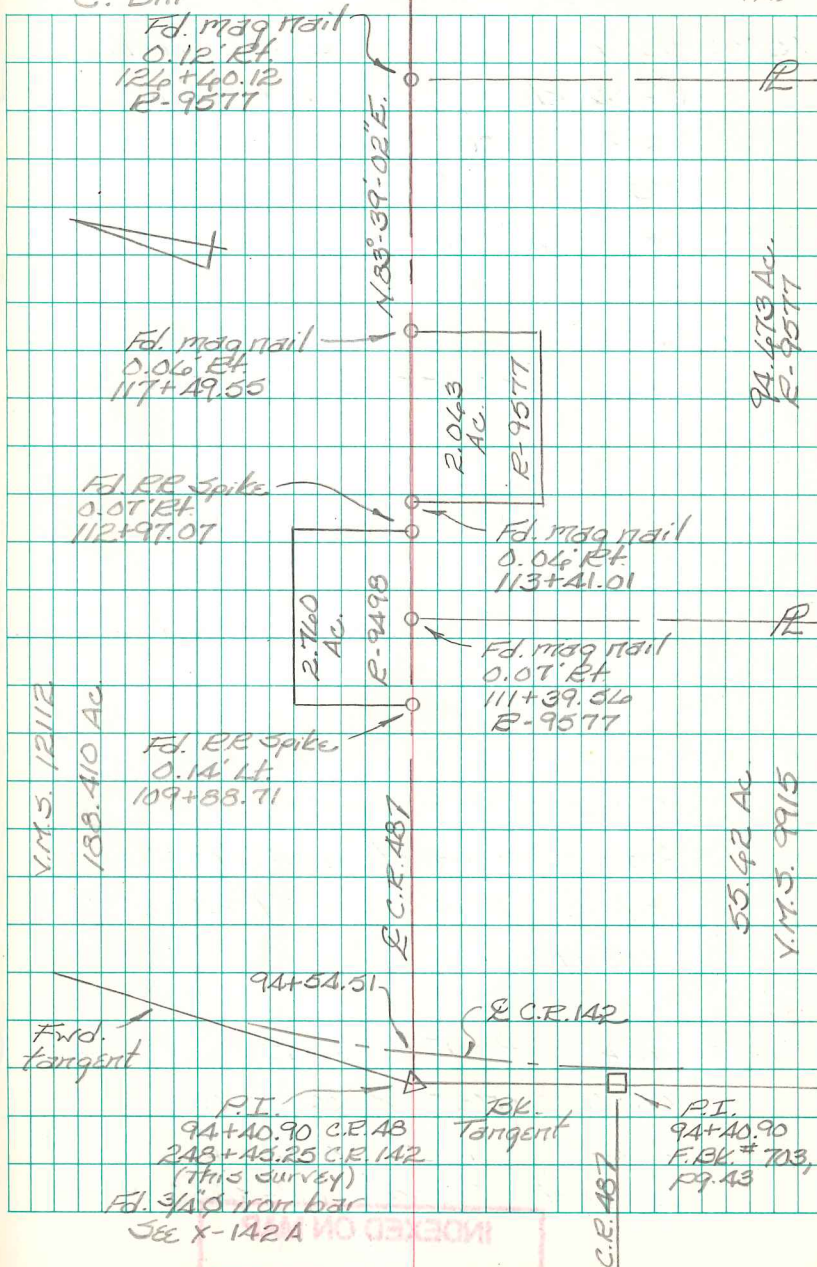
94+40.90 - P.I. - Fd. $\frac{3}{4}$ " dia. iron
bar ≈ 5 " deep - Start of
this survey - shown as
C.R. 142 P.I. Sta. 248+45.7
in F.Bk. # 439, pg. 57 -
carried stationing East
from 1964 survey shown
in F.Bk. # 703, pg. 43

INDEXED ON MAP
9706

B. Simmons
G. Dappert
C. Dill

July 2013

33



INDEXED ON MAP
SEE X-142A

FB 713

C.R. 48
Bakescreek Twp.
Logan Co., Ohio

153+82.41 - P.O.T. - Fd. old hub
(\approx 13" deep) set over stone
(\approx 24" deep) - Set $\frac{3}{4}$ " mag
nail straddles - placed pcs.
of brick around stone -
Set 1" dia. iron bar over
stone & installed monument
box. Ref: Bk. D, pgs. 30 & 31.

140+27.39 - P.O.T. - Fd. R.R. Spike -
N.E. Corner 2.356 Ac. tract -
Ref: 2003 Gilbert Survey
(R-9461)

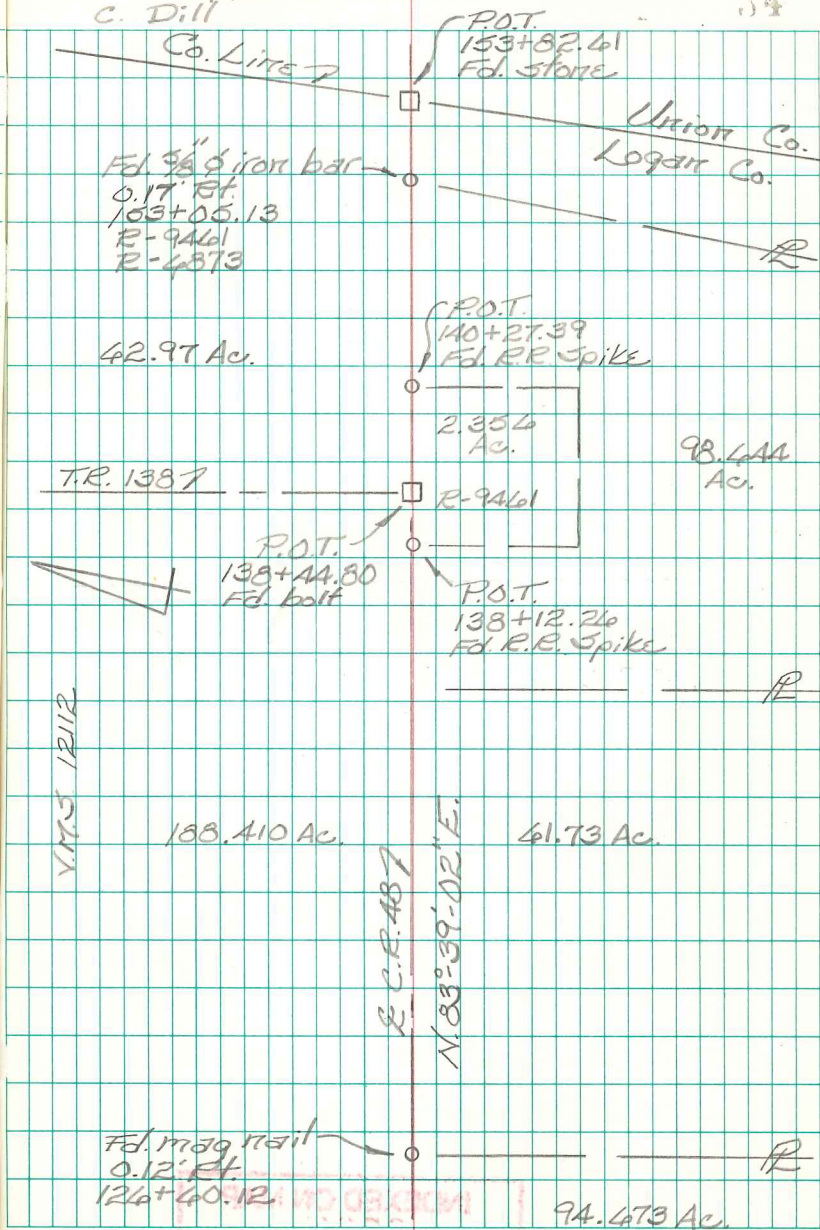
138+44.80 - P.O.T. - Fd. $1\frac{1}{4}$ " square
head bolt in monument
box - Intersection & T.R. 138
w/ & C.R. 48 - Ref: F.Bk. 439,
pg. 71

138+12.26 - P.O.T. - Fd. R.R. Spike -
N.W. Corner 2.356 Ac.
tract - Ref: 2003
Gilbert Survey (R-9461)

INDEXED ON MAP
9706

B. Simmons
G. Dappert
C. Dill

July 2013



FB 713

Intersection C.P. 48 w/ C.P. 142
 Bakescreek Twp.
 Logan Co., Ohio

243+69.77 - P.C. - Fd. 1/2" dia. iron
 bar - shown as being std.
 243+79.2 in F.B.K. # 439, pg. 60

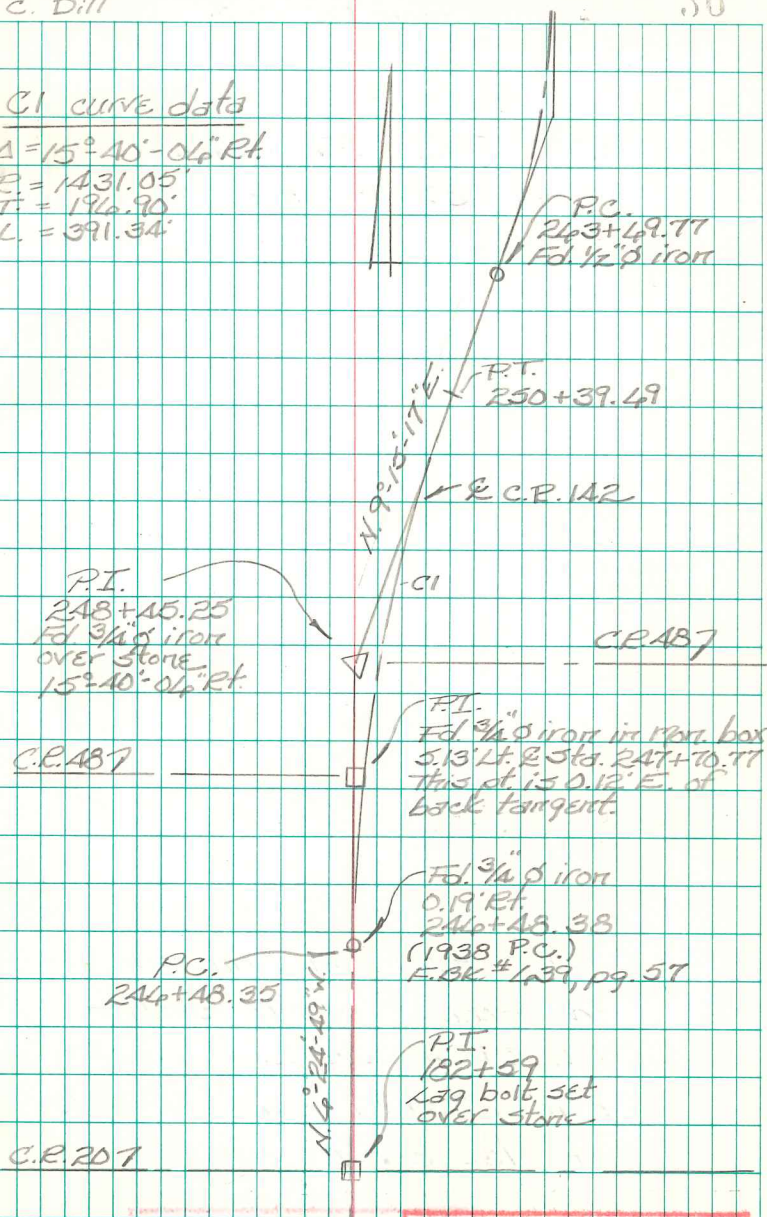
182+59 - P.I. - Fd. both a hub & 1"
 square head bolt in a monument
 box - straddled bolt & hub, removed
 monument box and dug deeper -
 Fd. stone w/ pcs. of brick - both
 bolt & hub were set on the N.
 side of stone - We set a 13"
 long lag bolt (1" dia head w/
 1 3/8" dia. flange) over stone. -
 Reset mon. box

B. Simmons
 G. Dappert
 C. Dill

July 2013

36

CI curve data
 $\Delta = 15^\circ 40' - 04'' \text{ Rt}$
 $R = 1431.05'$
 $T = 196.90'$
 $L = 391.34'$



P.I.
 248+45.25
 Fd. 3/4" iron
 over stone
 15° 40' - 04" Rt.

C.P. 48

P.C.
 246+48.35

C.P. 207

P.C.
 243+69.77
 Fd. 1/2" iron

P.T.
 250+39.49

C.R. 142

CI

C.R. 48

F.I.
 Fd. 3/4" iron in iron box
 5.13' Lt. E. Sta. 247+70.77
 This pt. is 0.12' E. of
 back tangent.

Fd. 3/4" iron
 0.19' Rt.
 246+48.38
 (1938 P.C.)
 F.B.K. # 139, pg. 57

P.I.
 182+59
 Lag bolt set
 over stone

INDEXED ON MAP
 9706