

John C. Farry Survey
 Lot. 13 DeGraff.

John C. Farry Vol. 116 - Page 51 All of lot 13

H.M. Fidler Deed Vol. 125 Page 527 South $\frac{1}{2}$ lot 14

E.J. Rush Deed Vol. 124 Page 4 North $\frac{1}{2}$ lot 14

C.L. Rogers Deed Vol. 50 Page 218 All of lot. 15

C.L. Rogers Deed Vol. 44 Page 387 West $\frac{1}{2}$ lot. 16

C.L. Rogers Deed Vol. 46 Page 283 East $\frac{1}{2}$ lot. 16

638
 INDEXED ON MAP

June - 9 - 1927
 Wright,
 Smucker,
 Ed. Corp.

(see Book
 Page 68-69 for
 Survey of lot 61)

W
 E

570

Huges St. 60'

Alley 16'	Main St. 60'	36	17	16
		35	18	15
		34	19	14
		33	20	13
		Alley 16'		
Alley 16'	Main St. 60'	32	21	12
		31	22	11
		30	23	10
		29	24	9

R.R. 100' wide

Lots 66' X 132'

Lots as shown in Plat. Book
 See Next Page for Survey.

(over)

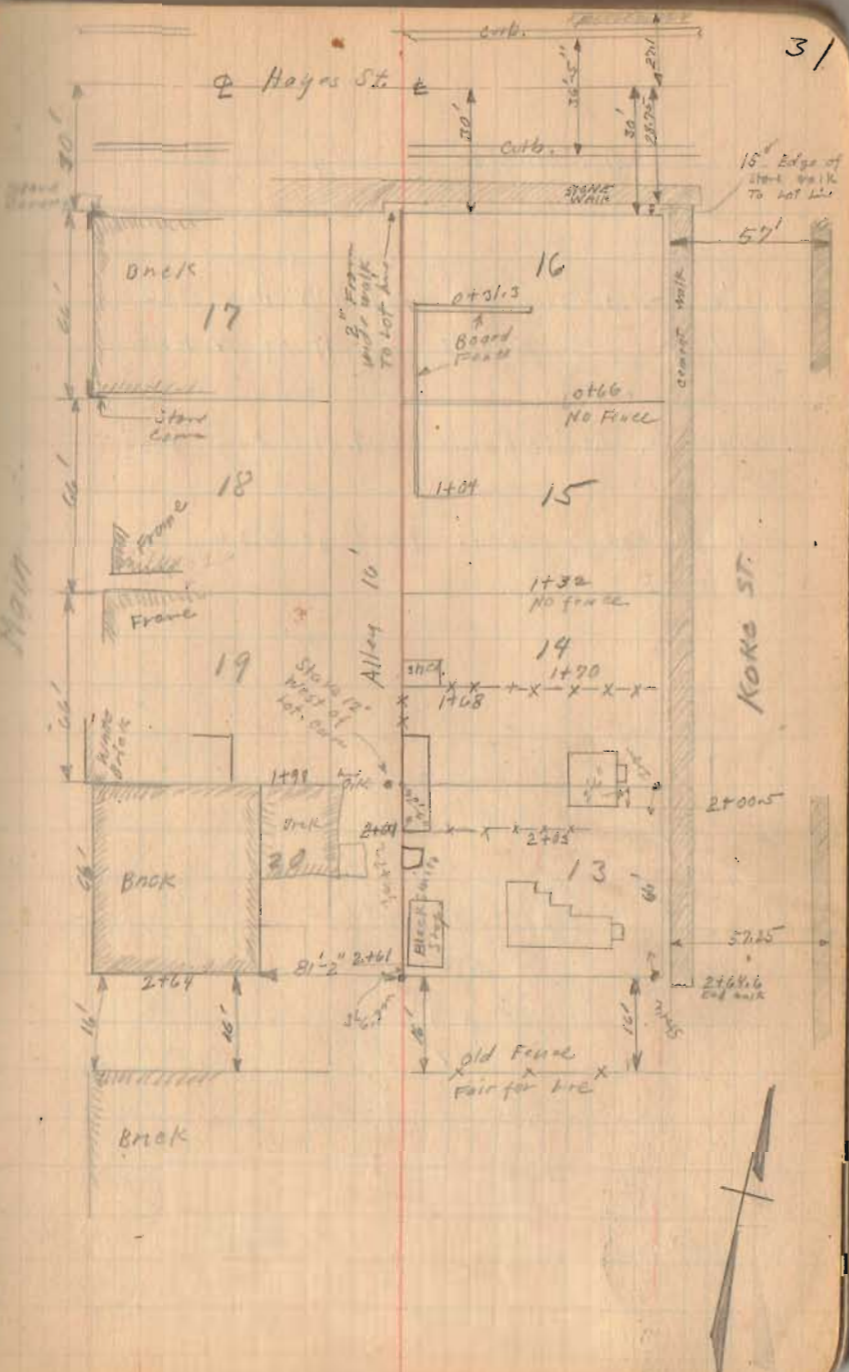
6-9-27

Ferry Survey

Established N. line of lot 16 as shown.
Measurements (by stationing) from N. line of lot 16
Measured on ~~By~~^{Main} St. Note Distances

O.K. for lots with buildings
South side of lot 13 O.K. with building
on Lot 20.

Measured from \pm Main St. To \pm Rake St.
distance O.K.



638
INDEXED ON MAP