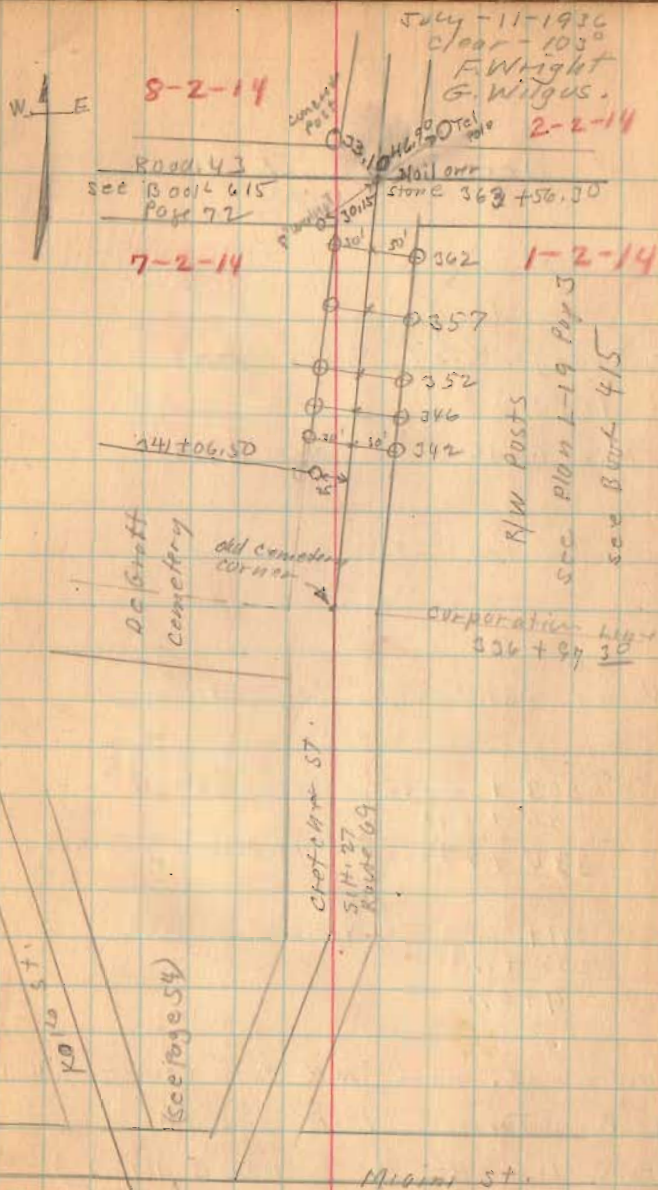


Cretcher St. De Graft.

1725

INDEXED ON MAP





Cretcher St. De Graft

Record from  
50' - Swanger and Margus Pike  
1880  
Pike Book 5 Page 373

Using Stationing Page 74

363 + 56.30    Sec. Store  
26 + 59.1  

---

336 + 97.30    (Old Cemetery cur. as per A to B)

341 + 06.50    (N.E. Cur. Cem.)  
336 + 97.30  

---

4 + 09.20

Measured S. from N.E. cur. Cemetery 409.2'  
To B. Turned 10°-10' made  
intersection At A (A to B 1616.9)  
Turned 29°-12' at A

1725

INDEXED ON MAP

7-11-36

75

8-2-14

7-2-14

Stone at  
+ Roads. 2-2-14

Road 45

1-2-14

S. 3-40 W  
40 m. 19 feet To Stone  
Cemetery cur. at  
2659 Feet

10-10'  
S. 29-30 W  
24 ch. 26 1/2 Feet To  
1610 1/2 Feet

A

S. 21-23 W  
15 ch 14 1/2 Feet To  
Miami St  
1202.5 Feet.

Miami St.

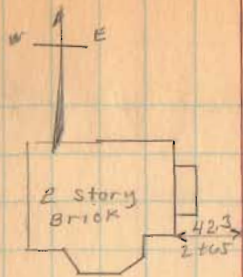
(Old)



## Cretcher St. Degratt

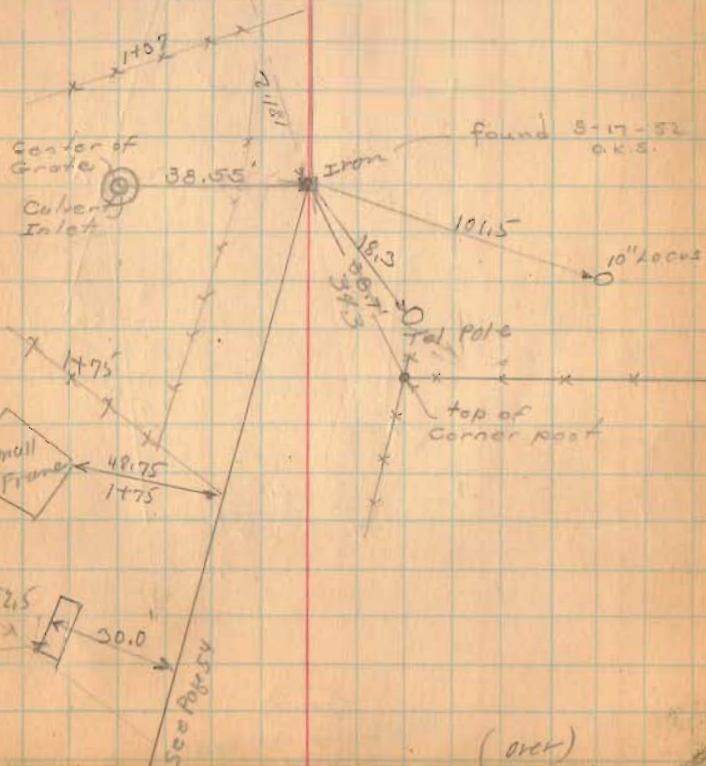
Set stakes on West side  
of curve 25' from  $\frac{1}{2}$  used  
Pike Record of 50'

Cretcher St. apparently is a  
60' St. from indications of  
sidewalks However I was  
unable to find and record  
width except Pike width  
of 50'



Stationing  
shown is from  
A

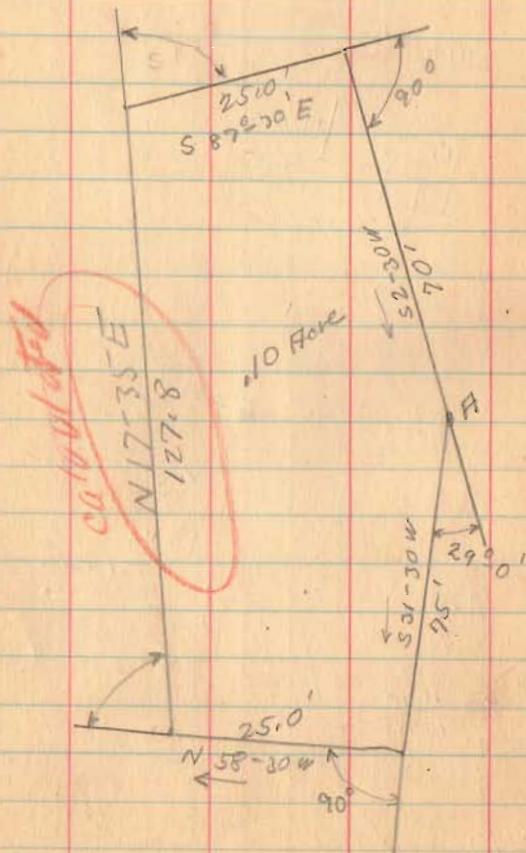
ELLIS ST



1225



Cretaker St. De Graff

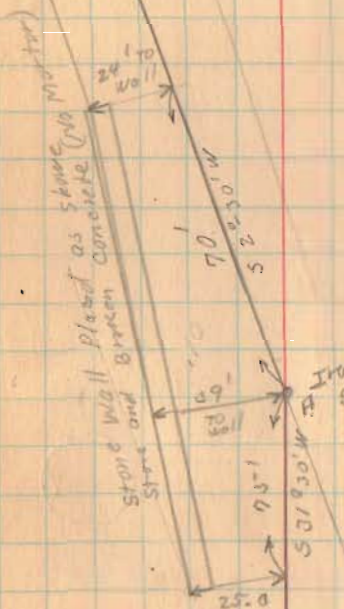


1725  
INDEXED ON MAP

Oct. 9-1936  
clear  
F. Wright  
G. Posey 77



Measurements  
Taken after  
Wall was completed.



*Miami  
08*

Fidler Survey ( Cretcher St. ) DeGraff 1936

The following described land in Section 7 Town 2 Range 14 of between The Miami Rivers Survey and being in the Town of DeGraff Miami Township Logan County.

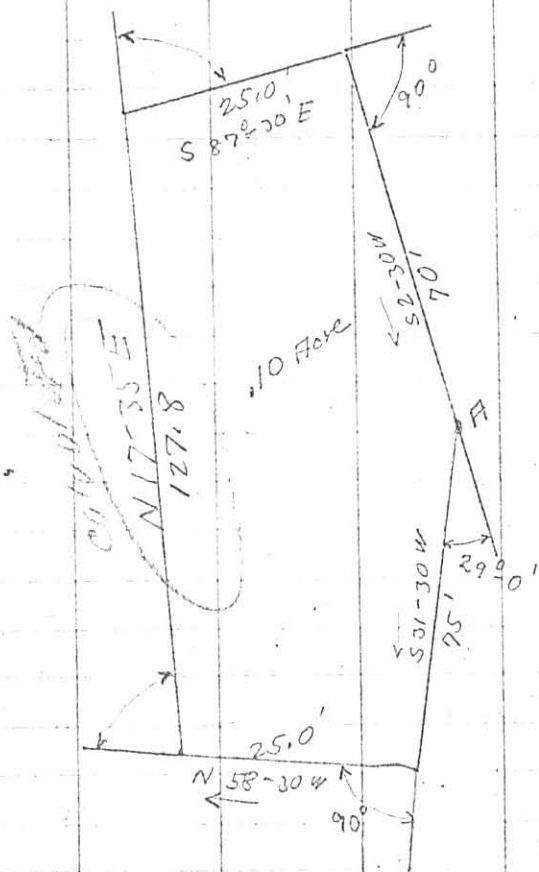
Beginning at a stone at the N.E. Corner of said Section 7 said stone being in the center of S.H. 27 (Route 69 ) and being station 363 56.3 of S.H.27 as shown on Logan County Engineers Plan L<sup>2</sup> 19 Page 3 thence with center of S.H. 27 S. 3 --40 W. 2659 feet.S. 2--30 W. 1616.9 feet to an iron said iron being the beginning point of this survey thence with the center of S.H. 27 S. 31 --30 W. 75.0 feet ,thence N. 58 --30 W. 25.0 feet , thence N. 17 -35 E. 127.8 feet ~~to center of S.H. 27~~ <sup>THENCE S. 87°-30'E 251.0'</sup> thence with the center of S.H.27 S. 2 --30 W. 70.0 to the place of beginning said tract containing one tenth of one acre ( 0.10 ) of which eight hundrets ( 0 ).08 ) is now in highway and being the same tract as surveyed July 11, 1936 as shown in Logan County Engineers Book 584 page 74 to 77

1725  
10

INDEXED ON MAP

F. B. 584

Cretcher St. De Graff



(1725) 1P  
INDEXED ON MAP

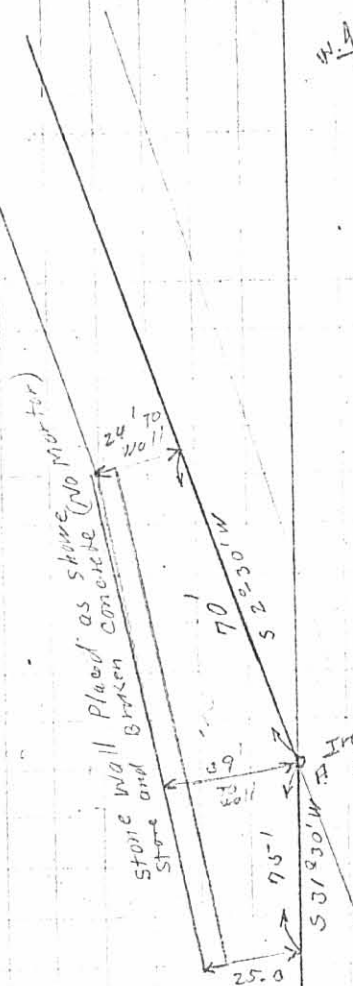
Oct. 3<sup>rd</sup> 1936

clear  
F. Wright  
G. Pusey

77

N. A. E.

Measurements  
Taken after  
Wall was completed.



Iron  
See Page 76