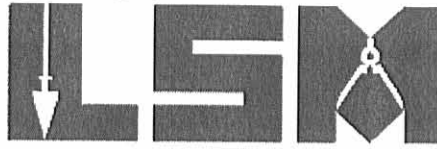


REV'D 2-1-08 SMM/OK

Lee Surveying and Mapping Co., Inc.

Land Surveys • Topography • Subdivisions • Construction Layout

117 N. Madriver St.
Bellefontaine OH 43311



Phone: (937) 593-7335
Fax: (937) 593-7444

MID-STATES CONTAINER CORPORATION 0.785 ACRE

Lying in Section 12, Town 3, Range 13, Village of DeGraff, Miami Township, Logan County, Ohio.

Being out of the Mid-States Container Corporation (former railroad right-of-way) 2.252 acre tract as deeded and described in Volume 393, Page 367 of the Logan County Records of Deeds and being more particularly described as follows:

Beginning at a railroad rail found sitting vertically at the northeast corner of Lot 28 (Plat Cabinet A Slide 80), and the intersection of the south line of the former railroad right-of-way and the west right-of-way of Main Street (60 feet wide).

THENCE, with the north line of Lot 28, the north line of Lot 45, and the north line of Lot 45 extended, S 65°-50'-00"W, a distance of 341.13 feet to a MAG nail set, passing a 5/8 inch iron rod set at 281.12 feet.

THENCE, with the west right of way of Boggs Street (60 feet wide), N 24°-54'-50"W, a distance of 98.01 feet to a point.

THENCE, N 65°-50'-48"E, a distance of 1.00 feet to a point.

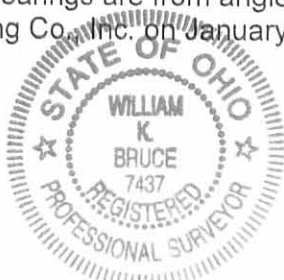
THENCE, N 24°-54'-50"W, a distance of 2.00 feet to a point.

THENCE, with the south lines of Mid-States Container Corporation's tract (Vol. 197, Pg. 348), the south line of Mid-States Container Corporation's tract (Vol. 198, Pg. 549) and the Mid States Container, Inc., 0.0143 acre tract (Vol. 395, Pg. 243 Tract II), N 65°-50'-00"E, a distance of 341.51 feet to a 5/8 inch iron rod set, passing 5/8 inch iron rods set at 0.30 feet and 59.01 feet.

THENCE, with the west right-of-way of Main Street, S 24°-07'-31"E, a distance of 100.00 feet to the point of beginning.

Containing 0.785 acre of which 0.138 acre is within the highway right-of-way.

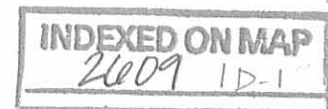
The basis for bearings is the south line of aforesaid 2.252 acre tract, being S 65°-50'-00"W, and all other bearings are from angles and distances measured in a field survey by Lee Surveying and Mapping Co., Inc. on January 25, 2008.



ORIGINAL STAMP IN GREEN

Description prepared by:

William K. Bruce
Professional Surveyor 7437
January 25, 2008



L-836018

1 REC'D 2-6-08 SMY/OK

Lee Surveying and Mapping Co., Inc.

Land Surveys • Topography • Subdivisions • Construction Layout

117 N. Madriver St.
Bellefontaine OH 43311



Phone: (937) 593-7335
Fax: (937) 593-7444

MID-STATES CONTAINER CORPORATION INGRESS/EGRESS AND LOADING DOCK EASEMENT

Lying in Section 12, Town 3, Range 13, Village of DeGraff, Miami Township, Logan County, Ohio.

Being an ingress/egress and loading dock easement, through the Mid-States Container Corporation (former railroad right-of-way) 2.252 acre tract as deeded and described in Volume 393, Page 367, through the Mid States Container, Inc., part of Lot 29 and 0.0143 acre tract as deeded and described in Volume 395, Page 243, Tracts I and II, and through the Mid-States Container Corporation part of Lot 29 and second tract of land as deeded and described in Volume 198, Page 549 of the Logan County Records of Deeds and being more particularly described as follows:

Commencing at a railroad rail found sitting vertically at the northeast corner of Lot 28 (Plat Cabinet A Slide 80), and the intersection of the former railroad right-of-way and the west right-of-way of Main Street (60 feet wide).

THENCE, with the west right-of-way of Main Street, N 24°-07'-31"W, a distance of 40.00 feet to a point at THE TRUE POINT OF BEGINNING.

THENCE, S 65°-50'-00"W, a distance of 341.68 feet to a point on the west right-of-way of Boggs Street (60 feet wide).

THENCE, with the west right-of-way of Boggs Street, N 24°-54'-50"W, a distance of 58.01 feet to a point.

THENCE, N 65°-50'-48"E, a distance of 1.00 feet to a point.

THENCE, N 24°-54'-50"W, a distance of 2.00 feet to a point.

THENCE, with the south lines of Mid-States Container Corporation's tract (Vol. 197, Pg. 348), the south line of Mid-States Container Corporation's tract (Vol. 198, Pg. 549), N 65°-50'-00"E, a distance of 248.87 feet to a point on a existing building's eastern wall, passing 5/8 inch iron rods set at 0.30 feet and 59.01 feet.

THENCE, with the existing building's eastern wall, N 25°-04'-21"W, a distance of 18.61 feet to a point.

THENCE, N 65°- 42'-08"E, a distance of 92.80 feet to a point on the west right-of-way of Main Street.

THENCE, with the west right-of-way of Main Street, S 24°-07'-31"E, a distance of 78.82 feet to the point of beginning.

The basis for bearings is the south line of aforesaid 2.252 acre tract, being S 65°-50'-00"W, and all other bearings are from angles and distances measured in a field survey by Lee Surveying and Mapping Co., Inc. on January 25, 2008.

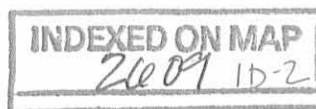


ORIGINAL STAMP IN GREEN

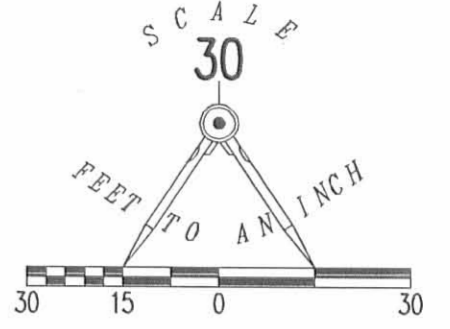
Description prepared by:

William K. Bruce
William K. Bruce
Professional Surveyor 7437
February 5, 2008

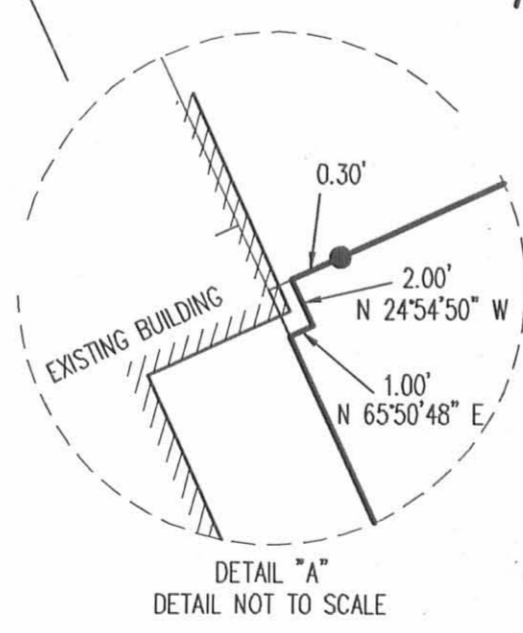
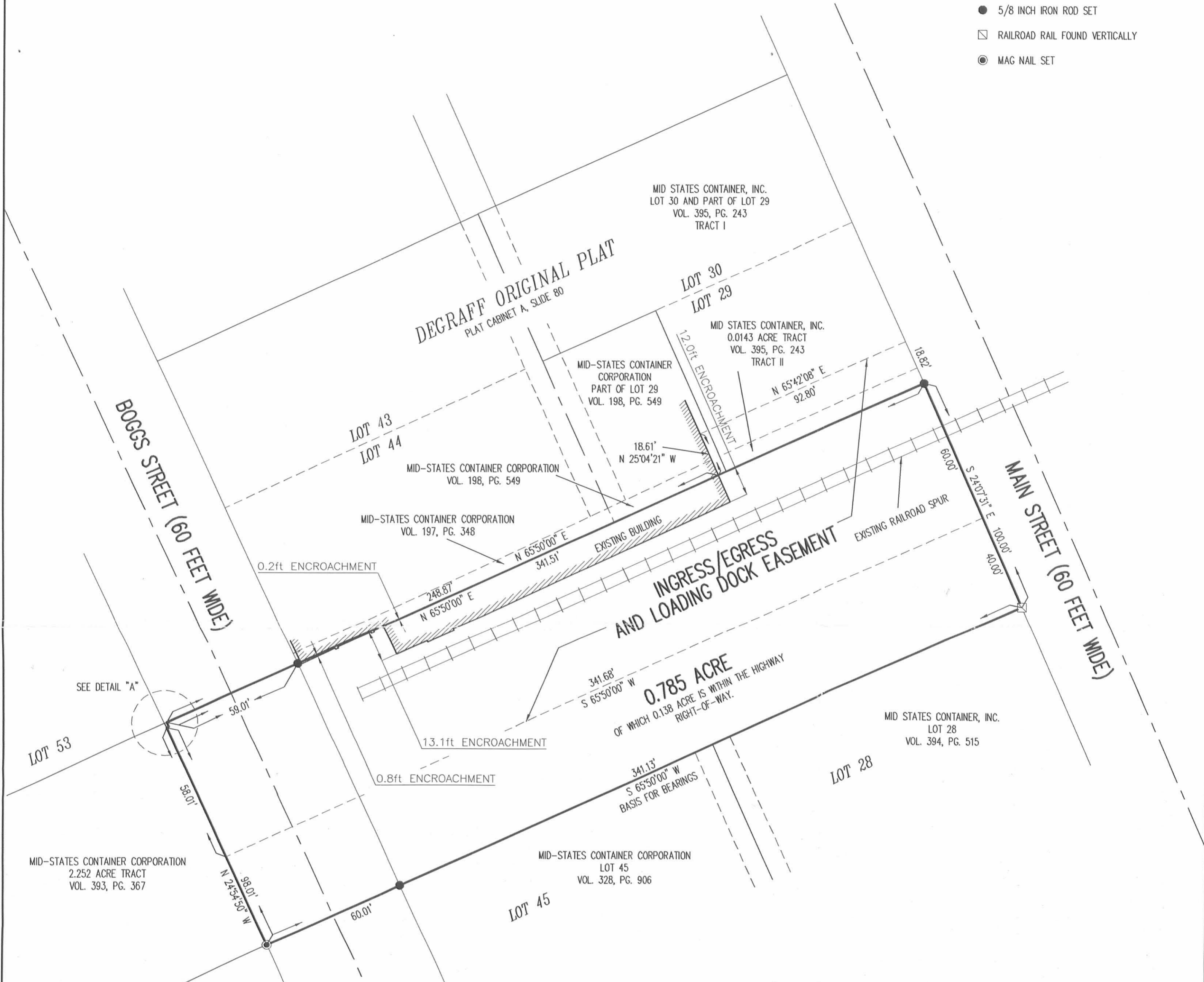
L-836018



REC'D 2-6-08 SMJ/llc



- LEGEND
- 5/8 INCH IRON ROD SET
 - ☐ RAILROAD RAIL FOUND VERTICALLY
 - ◎ MAG NAIL SET



A SURVEY OF AN INGRESS/EGRESS AND LOADING DOCK EASEMENT THROUGH THE MID-STATES CONTAINER CORPORATION ORIGINAL 2.252 ACRE TRACT VOLUME 393, PAGE 367, MID STATES CONTAINER, INC. PART OF LOT 29 AND A 0.0143 ACRE TRACT VOLUME 395, PAGE 243, TRACT I AND II, MID-STATES CONTAINER CORPORATION PART OF LOT 29 VOLUME 198, PAGE 549 AND MID-STATES CONTAINER CORPORATION'S TRACT VOLUME 198, PAGE 549 AND A SURVEY OF A 0.785 ACRE TRACT OUT OF THE MID-STATES CONTAINER CORPORATION ORIGINAL 2.252 ACRE TRACT VOLUME 393, PAGE 367 SECTION 12, TOWN 3, RANGE 13 VILLAGE OF DEGRAFF MIAMI TOWNSHIP LOGAN COUNTY, OHIO

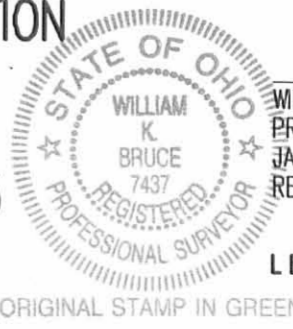
SURVEYED BY:

William K. Bruce

WILLIAM K. BRUCE
PROFESSIONAL SURVEYOR 7437
JANUARY 25, 2008
REVISED FEBRUARY 5, 2008

COPYRIGHT 2008 BY:
LEE SURVEYING & MAPPING CO., INC.
117 North Madriver Street
BELLEFONTAINE, OHIO 43311
(937) 593-7335
surveys@lsmcinc.us

ADW D0108 836018 L-836018-2



2 WORKING DAYS
BEFORE YOU DIG

CALL TOLL FREE 800-362-2764

OHIO UTILITIES PROTECTION SERVICE

INDEXED ON MAP
2-6-08