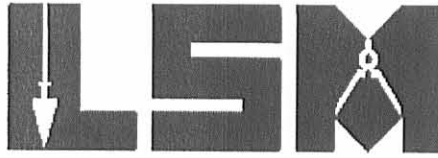


1 REC'D 10-2-07 SMM/OK

Lee Surveying and Mapping Co., Inc.

Land Surveys • Topography • Subdivisions • Construction Layout

117 N. Madriver St.
Bellefontaine OH 43311



Phone: (937) 593-7335
Fax: (937) 593-7444

LOTS 396 AND 375 10.00 FEET WIDE WATER LINE EASEMENT

Lying in Section 5, Town 3, Range 13, Village of DeGraff, Miami Township, Logan County, Ohio.

Being a 10.00 feet wide water line easement over Lots 396 and 375 of The Meadows Second Addition as recorded in Plat Cabinet A, Slide 573 of the Logan County Records of Plats and being more particularly described as follows:

The north line of said easement being a line 10.00 feet north of and parallel to the south lines of Lots 396 and 375.

The basis for bearings is the east right-of-way of Cornish Drive, being N 5°-09'-18"E, and all other bearings are from angles and distances measured in a field survey by Lee Surveying and Mapping Co., Inc. on September 18, 2007.



ORIGINAL STAMP IN GREEN

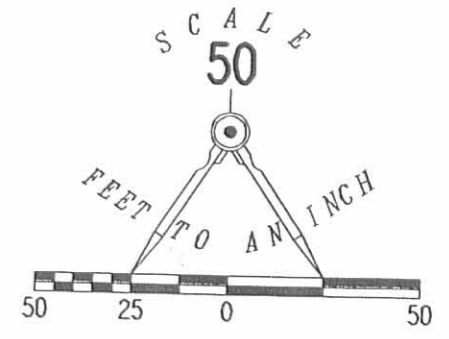
Description prepared by:

William K. Bruce
Professional Surveyor 7437
September 28, 2007

3311097A



REV'D 10-2-07 SWM/OK



- LEGEND:
- 5/8 INCH IRON ROD SET
 - ☀ FIRE HYDRANT

SURVEY OF A 10.00 FEET WIDE
WATERLINE EASEMENT ACROSS
LOTS 396 AND 375
THE MEADOWS SECOND ADDITION
PLAT CABINET A, SLIDE 573
SECTION 5, TOWN 3, RANGE 13
VILLAGE OF DEGRAFF
MIAMI TOWNSHIP
LOGAN COUNTY, OHIO

SURVEYED BY:

William K. Bruce

WILLIAM K. BRUCE
PROFESSIONAL SURVEYOR 7437
SEPTEMBER 18, 2007



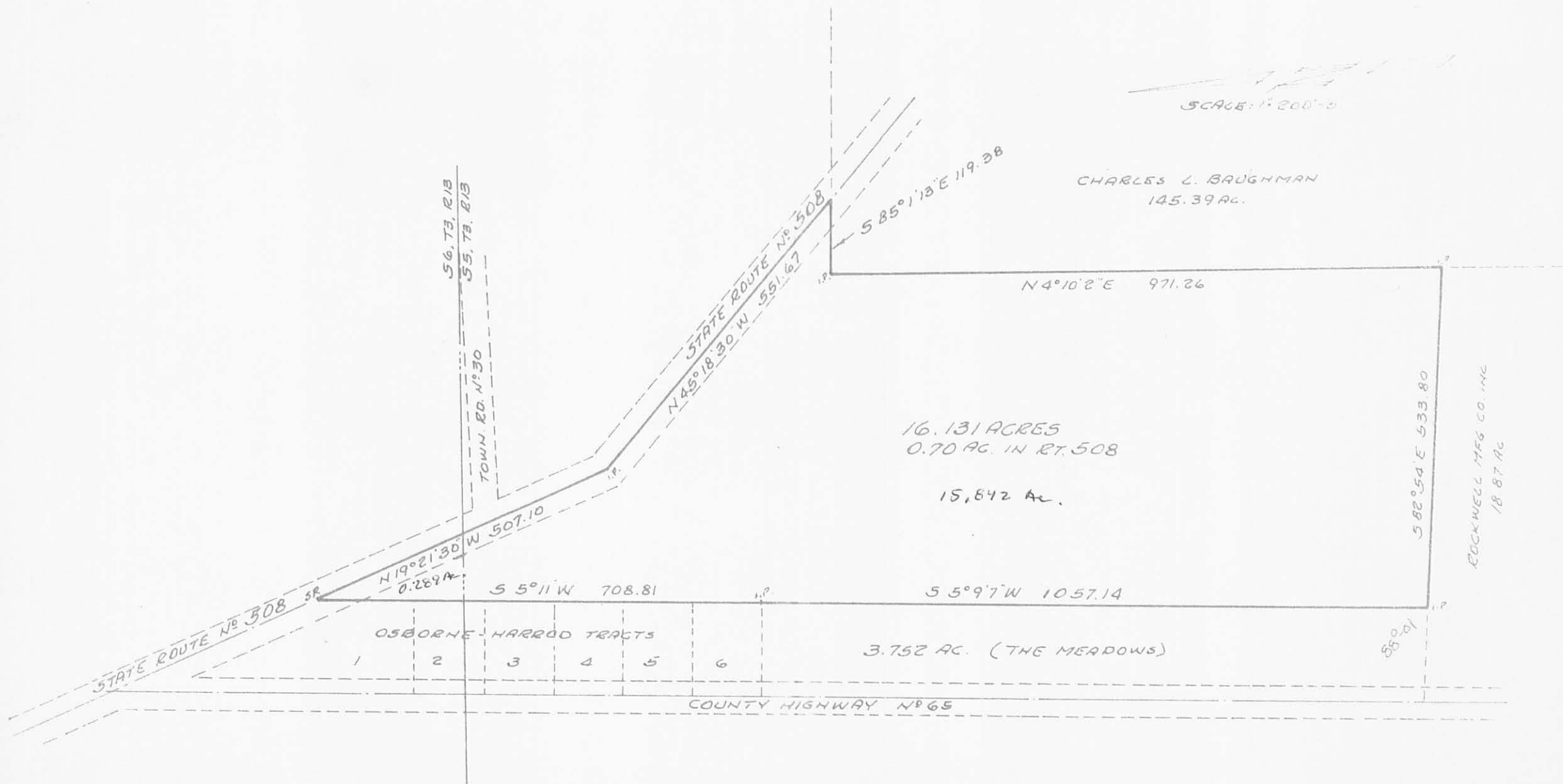
ORIGINAL STAMP IN GREEN

COPYRIGHT 2007 BY:
LEE SURVEYING & MAPPING CO., INC.
117 North Madriver Street
BELLEFONTAINE, OHIO 43311
(937) 593-7335
surveys@lsmcinc.us
KSR D0907 3311097A L-3311-3

2 WORKING DAYS
BEFORE YOU DIG
CALL TOLL FREE **800-362-2764**
OHIO UTILITIES PROTECTION SERVICE.

INDEXED ON MAP
5001 IP

HAROLD McINTOSH 16.131 ACRES
 SECTIONS 5 & 6, TOWN 3, RANGE 13 DE GRAFF, OHIO
 0.289 AC., SEC. 6 A PART OF 81.81 AC. & 15.842 AC., SEC. 5 A PART OF 90.52 AC.



SURVEYED BY:
 KLINE ENGINEERING
 XENIA, OHIO
Raymond P. Kline R.S. 3877

INDEXED ON MAP
 5001 2P

HAROLD McINTOSH to ART HOMES INC
 DEGRAFF, LOGAN CO., OHIO
 S5, T3, R13

SEC. 6, TOWN. 3 RANGE 13
 SEC. 5, TOWN. 3 RANGE 13



SURVEYED BY:
 KLINE ENGINEERING
 83 SPRING ST.
 XENIA, OHIO

Raymond V. Kline

AUGUST 1975

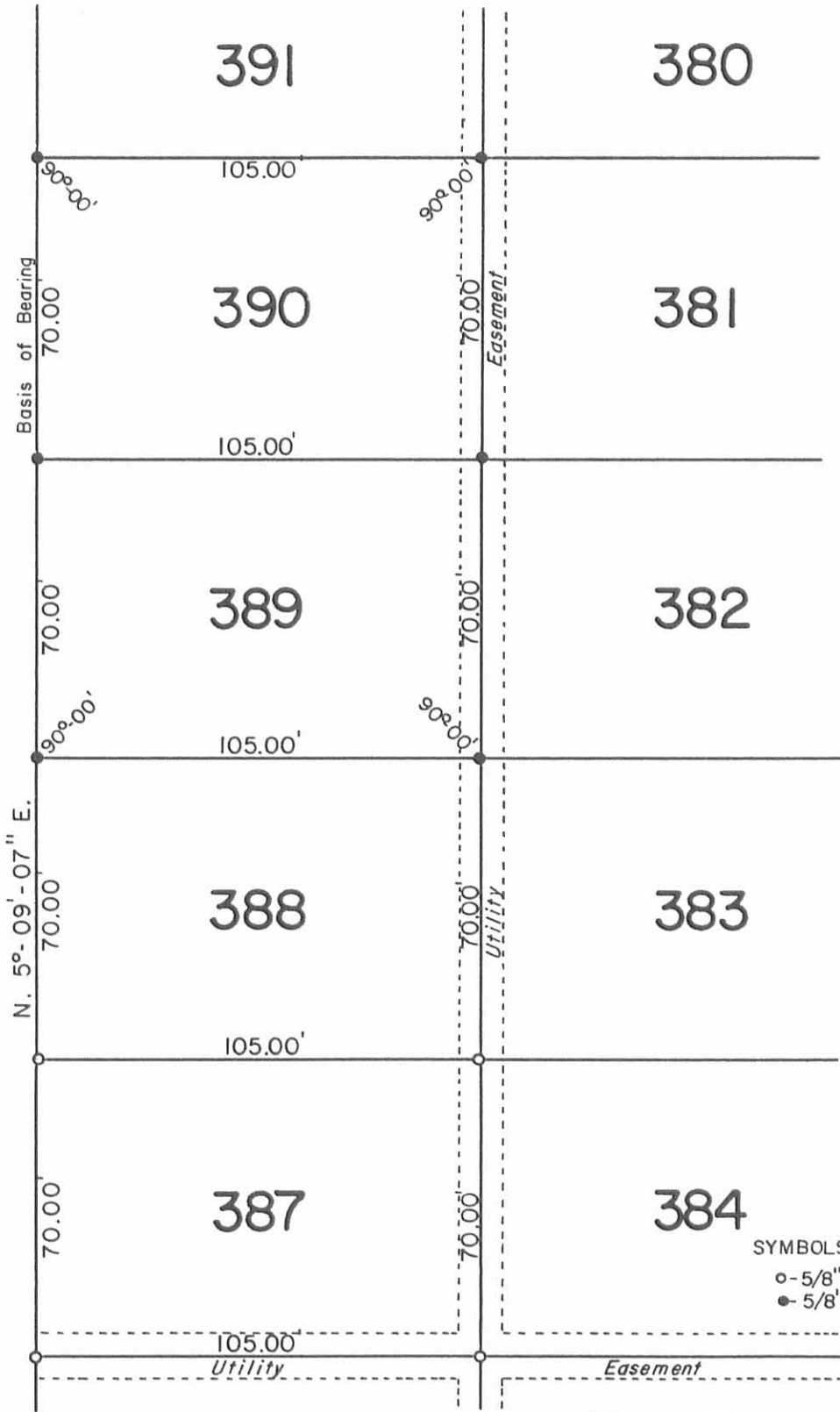
PER: RAYMOND V. KLINE
 REG. SURVEYOR OHIO #3877

INDEXED ON MAP
 5801 3P



MAP ROOM.

CORNISH DRIVE - 50'



SYMBOLS:
 ○ - 5/8" x 30" Rebars Fd.
 ● - 5/8" x 30" Rebars Set.

Reference:

The Meadows Second Addition.
 Plat Cabinet A, Slide 574 (2-26-1976)

INDEXED ON MAP
 580/4P

FURROW SURVEY
 Lots No. 389-390
 The Meadows Second Addition
 Village of DeGraff
 Miami Township
 Logan County, Ohio
 June 24, 1992

Daniel E. Gilbert
 DANIEL E. GILBERT, P.S.
 REG. SUR. NO. 5402
 400 N. PARK ST.
 BELLEFONTAINE, OHIO 43311
 TELEPHONE: 1 (513) 593-1428



0 20 40 80
 Scale: 1" = 40'

092-035

Received 3-17-92

OK 3-18-92

LESLIE H. GEESLIN
REGISTERED SURVEYOR NO 5248
P. O. BOX 274
RUSHSVLVANIA, OHIO 43347

TELEPHONE: (513) 468-2793
10 FOOT EASEMENT

The following described centerline of a 10 feet wide easement situated in the state of Ohio, County of Logan, Township of Miami, being part of Section 5, Town 3, Range 13 in the Village of DeGraff and more particularly described as follows:

Beginning at a point in the east line of County Highway 65 that is N. 1° 29' 35" E. 5.00 feet from the northwest corner of Lot 351 of The Meadows.

Thence N. 88° 30' 10" E. 125.6 feet to a manhole and there terminate.

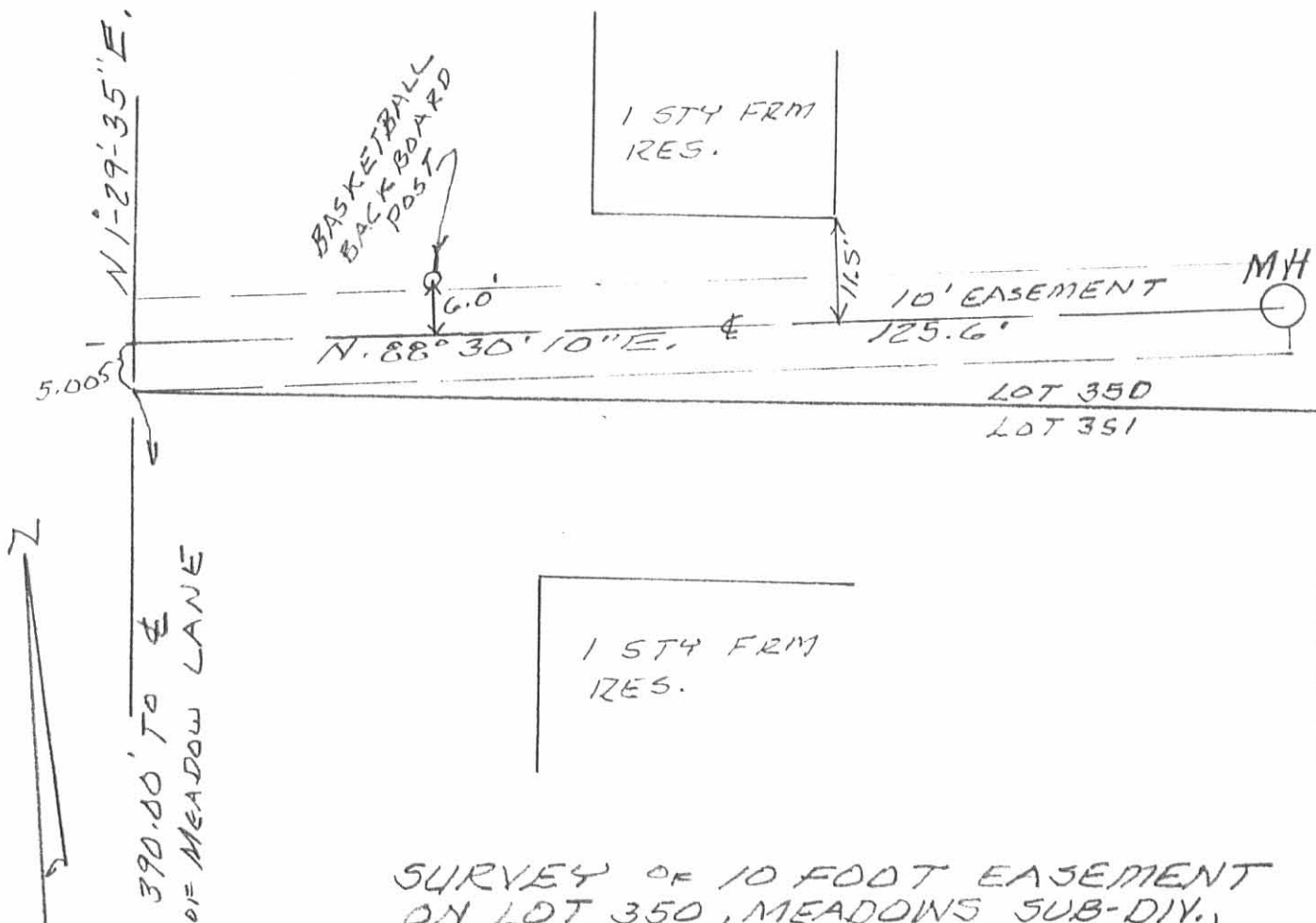
The above described 10 foot easement being on the south side of Lot 350 of The Meadows sub division.



Leslie H. Geeslin

INDEXED ON MAP
580/5D

C. H. 65



SURVEY OF 10 FOOT EASEMENT
 ON LOT 350, MEADOWS SUB-DIV.,
 MIAMI TOWNSHIP, LOGAN CO.,
 PART OF SECTION 5, T. 3, R. 13
 VILLAGE OF DEGRAFF, OHIO,
 MARCH 16, 1992
 SCALE: 1" = 20'



INDEXED ON MAP
 58015P

Leslie H. Geeslin
 LESLIE H. GEESLIN
 RUSHSVLVANIA, OHIO
 PH 513-468-2793

350

410

6" Tree on Corner

105.00'

Easement

351

411

70.00'

70.00'

105.00'

70.00'

90°00'

N. 5°-09'-07" E.

352

412

70.00'

70.00'

105.00'

90°00'

90°00'

Utility

413

Basis of Bearing

CORNISH DRIVE - 50'



● - 5/8" x 30" Rebars Fd.
○ - 5/8" x 30" Rebars Set.

INDEXED ON MAP
5801 6P

Daniel E. Gilbert

Daniel E. Gilbert, P.S.
Reg. Sur. No. 5402
400 N. Park St.
Bellefontaine, Ohio
43311

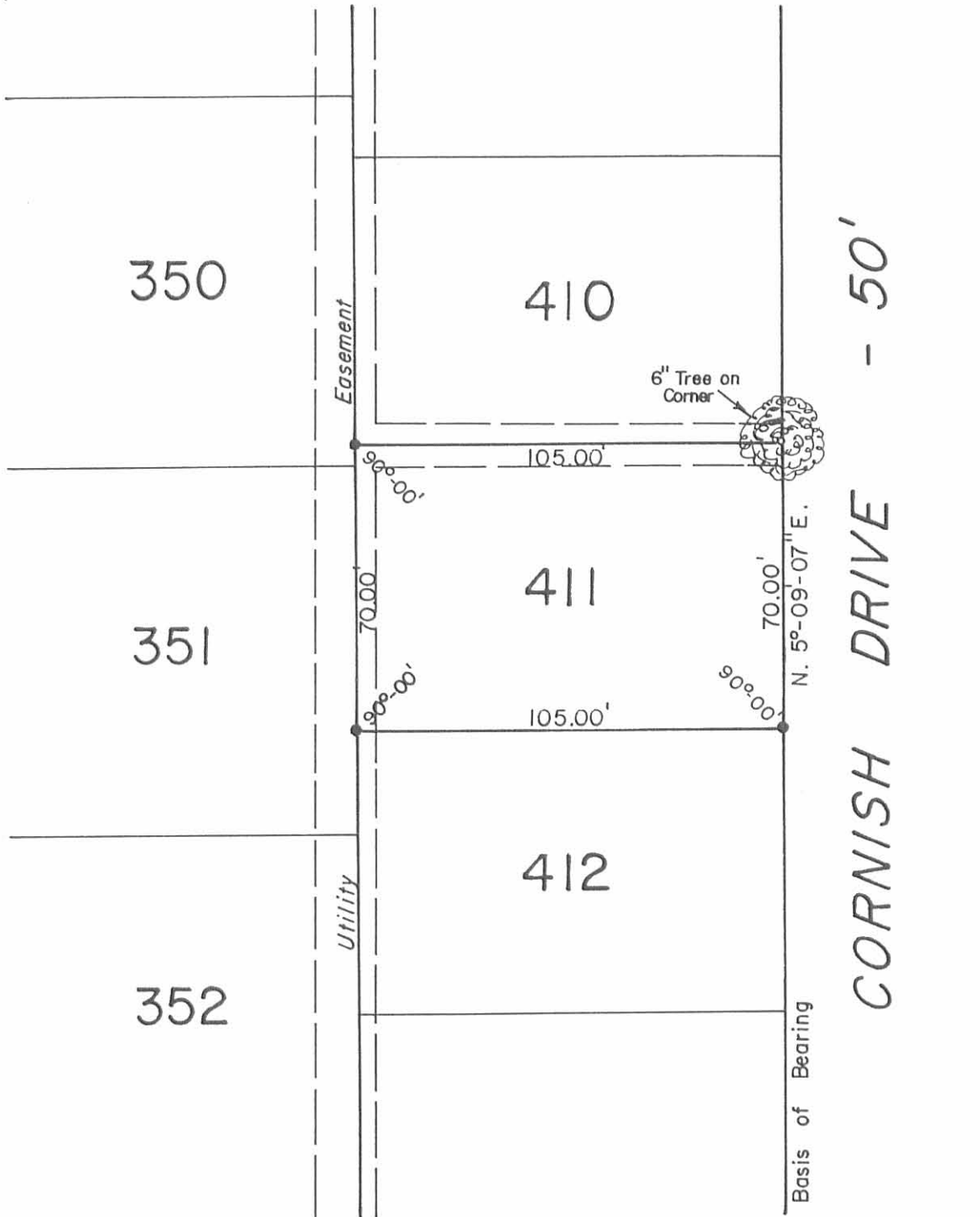


LUMBATIS SURVEY
Lot No. 412
The Meadows Second Addition
Village of DeGraff
Miami Township
Logan County, Ohio
April 5, 1990

Scale: 1" = 40'

090-016

MAP ROOM



● -5/8" x 30" Rebars Set.

INDEXED ON MAP
5001 7P

Daniel E. Gilbert
 Daniel E. Gilbert, P.S.
 Reg. Sur. No. 5402
 400 N. Park St.
 Bellefontaine, Ohio
 43311



LUMBATIS SURVEY
 Lot No. 411
 The Meadows Second Addition
 Village of DeGraff
 Miami Township
 Logan County, Ohio
 August 18, 1989

Scale: 1" = 40'

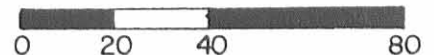


Reference:

The Meadows Second Addition.
 Plat Cabinet A, Slide 574 (2-26-1976)

SCHWEITZER SURVEY
 Lot No. 387
 The Meadows Second Addition
 Village of DeGraff
 Miami Township
 Logan County, Ohio
 June 13, 1990

Scale: 1" = 40'



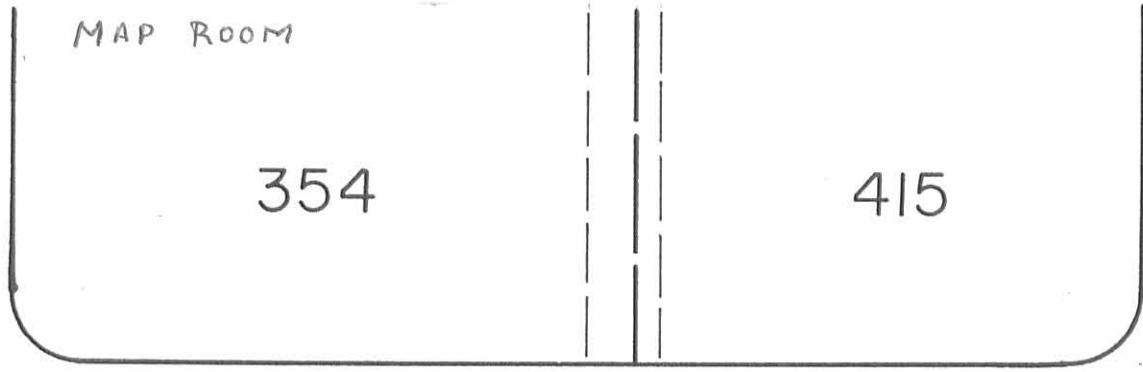
INDEXED ON MAP
 5801 OP

090-032

Daniel E. Gilbert

Daniel E. Gilbert, P.S.
 Reg. Sur. No. 5402
 400 N. Park St.
 Bellefontaine, Ohio
 43311

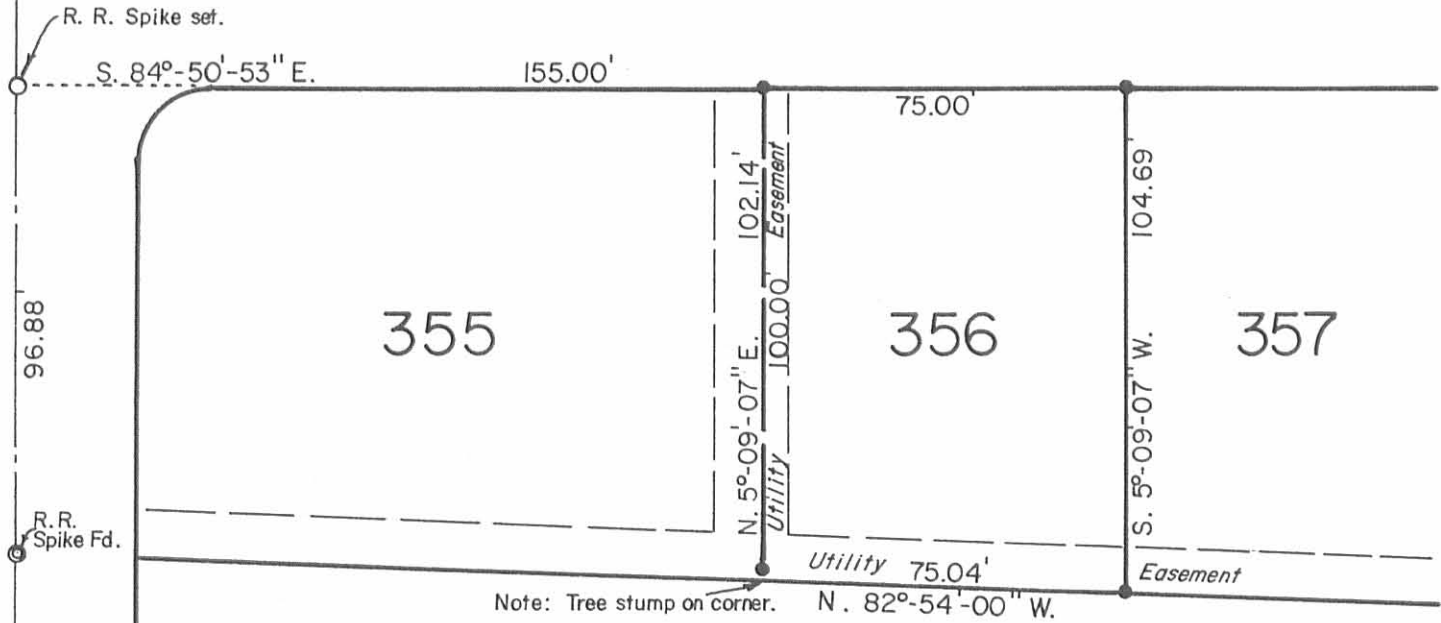




CORNISH DRIVE - 50'

C. H. No. 65 - 50'
N. 5°-09'-07" E.
Basis of Bearing

MEADOW LANE - 50'



R. R. Spike set.

S. 84°-50'-53" E.

155.00'

75.00'

355

356

357

N. 5°-09'-07" E.
Utility 102.14'
Easement

S. 5°-09'-07" W.
104.69'

Utility 75.04'

Easement

Note: Tree stump on corner. N. 82°-54'-00" W.

● - 5/8" x 30" Rebars. Set.

Reference:
The Meadows Addition.
Plat Cabinet A, Slide 568 (8-18-1975).
The Meadows Second Addition.
Plat Cabinet A, Slide 574 (2-26-1976).

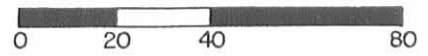
INDEXED ON MAP
580/ 9P

Daniel E. Gilbert
Daniel E. Gilbert, P.S.
Reg. Sur. No. 5402
400 N. Park St.
Bellefontaine, Ohio
43311



Lot No. 356
The Meadows Second Addition
Village of DeGraff
Miami Township
Logan County, Ohio
July 16, 1990

Scale: 1" = 40'



090-036