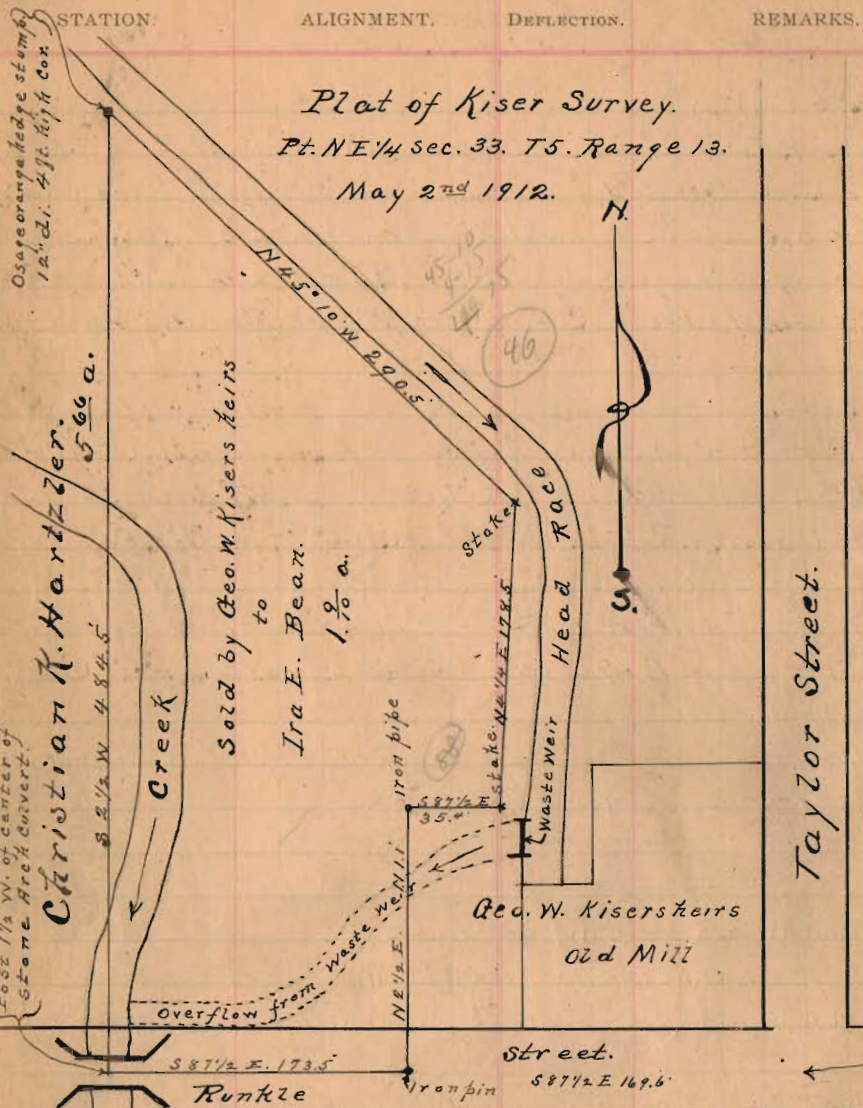


Kiser Survey Concluded.

R. P. STUBLEY & Co., Manufacturing



Plat of Kiser Survey.
Pt. NE 1/4 sec. 33. T5. Range 13.
May 2nd 1912.

STATION.	ALIGNMENT.	DEFLECTION.	REMARKS.
----------	------------	-------------	----------

Osage orange hedge stump
12" di. 4 ft high con.

Post 1 1/2 W. of center of
Stone Arch Curvert.
Christian K. Hartzler.

Sold by Geo. W. Kisers heirs
to
Ira E. Bear.
1.80 a.

Taylor Street.

Apparent center of
Runkle & Taylor Sts.

INDEXED ON MAP

(See Book 419 Page 55)

Geo. Betrick Survey. Jan 25th 1914
Part 8 1/2 59th 1/4 Sec. 6. Town 9. Range 14.
Wed. Jan 23. 0 fine mild warm day.
TOPOGRAPHY.
Note. Distances measured in feet.

INDEXED ON MAP
②
N.

- a to b = S 85 E 1096'
- b to c = N 5 E 543'
- c to d = N 85 W 1330'
- d to e = S 4 1/2 W 161'
- e to f = S 84 1/2 E 291'
- f to a = S 4 1/2 W 379 1/2'
- f to g = S 4 1/2 W 346 1/2'
- g to a = S 4 1/2 W 33'
- g to h = S 85 E 1096'
- b to h = N 5 E 33'

Tract. c. d. e. f. g. h. c = 13.70 a.
Sold to



This Survey recorded Vol. D. page 66. Co. Surv. S. Office

(1) Start at stone in 3 line quarry ca. 597 x 3 in. Dist. 1096'.
then S 85 E with 14 in. pin. set 7 at 1097' set stone 20 x 10 x 10
at b = SE cor. quarry. Wit. out of pin. N 12. set 10 foot on a seat of hill.
1096' S 2 cor. quarry at. cut off 1 foot on a seat of hill.
1097' set stone 12 x 10 x 12. Wit. in fine sand 12' set 10 foot
at 570' set stone 12 x 10 x 12. Wit. in fine sand 12' set 10 foot
at 570' set stone 12 x 10 x 12. Wit. in fine sand 12' set 10 foot
at 570' set stone 12 x 10 x 12. Wit. in fine sand 12' set 10 foot

Sec. District Survey concluded.

R. P. STUDLEY & Co., Manufacturing

STATION. ALIGNMENT. DEFLECTION. REMARKS.

(4) Start at stone a in line 14 acc. then with line corner 2/1. Shaffer 16.52. at 379.5 pass stone corner to corner of Shaffer. " 543 out stake in line (3) at 1100 from a.

(5) Start at stone f = 3725 on (4) at 231 stone corner = 2 e.

6 Start at stone corner 2 = 231 of (5). 255 e at 161 out stake = d = 597.30. 2/11.00. corner. " " = 1337 on line (3)

For C. E. Tait Levels Purills point
Bot on the boarding on side his Res near brick chim 0.0
level ground or 2.50 near S.W. by parallel side ditch 10.0

This survey was not made.
Richland Township

TOPOGRAPHY.

