

Ward of Miller

Harrison Twp.

Present bearing Ward of Miller line  
S 85 1/2 E - 17'

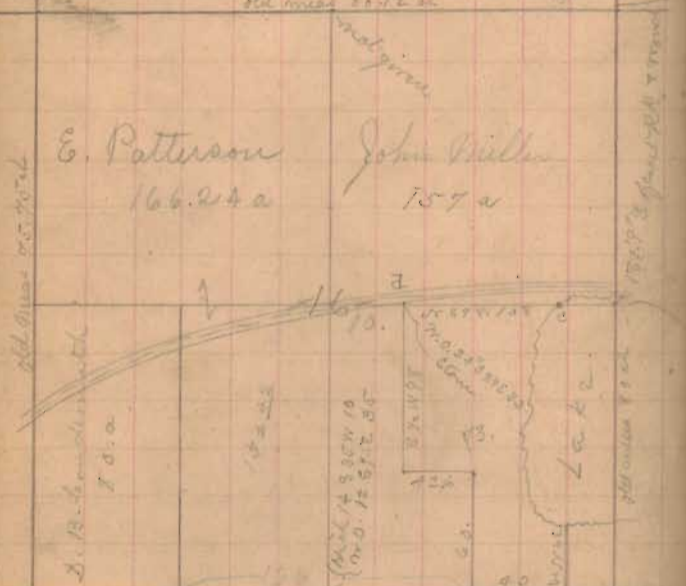
South line of King 40 a or S 80 1/2 W

Bearing of rail fence Ward of King at road N 75 W  
old lines 70 1/2 a

12 or 29 E 9  
24 89 E 24

721

INDEXED ON MAP

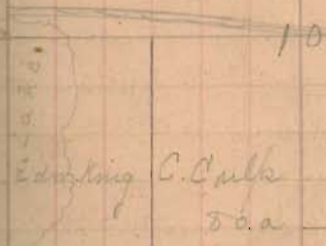


Town of R. 14

15  
Start at 2 S 30 1/2 E 27 a to Ward at  
" S 10 1/2 W 24 a Ward:

apex on N 65 SE q. is 181 1/4 feet S of road H.

Wm. Green  
105 57 a



105 57 a  
105 57 W 24

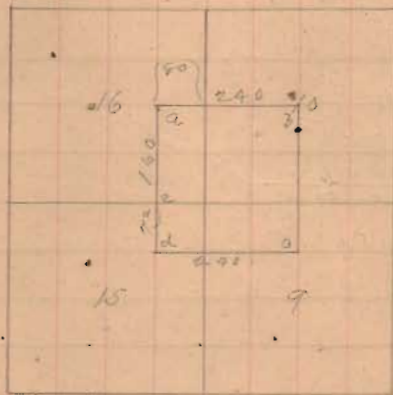
9

Geo E. Brand to Daniel Brand  
205. a Vol 2 pg 612 May 66

Bag at stone in ang of road <sup>a</sup> & sand & iron  
in S line of Dec. = S 87 1/2 E 40.0 <sup>3</sup>/<sub>4</sub> post in  
pond < stone & sand = N 1/2 E to the  
S or end of lake thence along the border  
of the lake at low water mark to the north  
line of sand or ice = with said line  
S 79 W 108 p. to post Q. O. 24 S 87 E  
33 lbs. = S 1/2 W 98 p. to stone = S 87 E  
42.6 p. post B. O. 30 S 62 W 63 =  
S 1/2 W 60 to bag. con 43 a.  
Also Bag. with stone = with ice.  
line or S 87 1/2 W 166 to cent. S or quar  
ice = N 1/2 E to cent. RR = eastward  
with RR on curve to N line quar  
= S 87 E 45 p. post Q. O. 24 S 87 E 33  
= S 1/2 W 98 p. to stone = S 87 1/2 E 42.6  
post B. O. 30 S 62 W 63 = S 1/2 E 60 p.  
to bag con 132 42 a.

William Pott to John Miller  
157a Vol P. 297 May 5 1846  
note of S 1/2 quar Dec 16 = 157a

3 June Rec May 1842 Rec for Rob Patterson



a = stone W. 24 S 23 W 15 link E = T  
b = d = S 1 W 72. d to c S 87 E 240  
c to f N E 232. f = quar ice  
f = stone high 12 N 10 W 27.  
to a N 89 W 240

C. Hayward for A. Bassett

May 29 - 1830

Virginiana

Plum 2 di

6500  
71.10  
352  
81.50  
27 27.01

6500  
5100

6500  
V. crastina 2<sup>o</sup>

Ward of Miller Run

James B. Clapper J. Ch. or Union  
of acct. W. Hale J.

Course of River below Dec 16-3-74  
N 87° W

Start at cent. take 1 ch. W of L. Miller  
and Patterson  
S 37° E Rand

hit post - 150 links over - 208 total

79.24 Gall 118 links W. of stone

of W. Alexander Post. Then

Start at 40.00 in line more than stone

post - 35 links and east 184 ch

hit stone of quarry Dec < S W - Miller

with Rd O. 12 S 42° E 5 1/2 links

and would ch. S 11° E 3 1/2 "

" Cent. R.R. N 42° E 54 "

Start at above quarry Dec <  
++  
S 86 1/2° E

154 junction of Ward of R.R. Jones

10.04 pass 7 links S of stone

link down Ward. < 79.7/100

20.00 put 7 in line

22.50 put 7 in line of quarry

post

Howenstein Pratt Surv.

Sheriff to E Pratt 26 a Jan-63.

Part N. Stewart Sec.

beg. at SE  $\angle$  of that pt here or east of  
M<sup>o</sup> Riv. - S line sec S 83 W 2 3<sup>00</sup>  
chains 736 <sup>1/2</sup> to SW  $\angle$  sec. Boun O.  
N 84 W 15<sup>00</sup> - with N. line sec  
N 15 W 12.90 ch to SW  $\angle$  Bounons N. O.  
44 S 42 1/2 E 21 <sup>00</sup> / Bench 3" N 72 E 14  
- with Bounons line N 84 10<sup>00</sup> E  
31.80 ch to cent. co. road. N. Ash 7"  
N 83 1/2 E 44 <sup>00</sup> / Elm 10" N 16 3/4 E 63 1/2  
- with road S 35 E 7.31 ch to stone  
at SE  $\angle$  Bounons land. - with  
road S 38 E 4.13 to 7 = N 77 1/2 E 7 W  
= N 64 1/2 E 2.16 = S 72 E 3.62 to Ton  
W Bank River, N. Ash 14" N 36 1/2 E  
23 <sup>00</sup> / Hick, 20" N 9 W 12 = down  
the River with stream. to beg.

Howenstein Pratt Surv. 60

Thos Bounon to E. Pratt, 53 24 a  
Sept. 63

Part N Stewart Sec.

beg at SW  $\angle$  part Cr. of Riv at  
Cr. O. 12' S 1/4 = E 30 <sup>00</sup> / N. Elm 12'  
N 86 1/2 E 62 = with N. line sec  
S 15 E 32.87 ch, Cr. O. 44 S 42 1/2 E 21  
E Bench 8" S 7 E 14 = N 34 10<sup>00</sup> E  
31.30 to cent road. N. Ash 7" N 83 1/2 E  
44 <sup>00</sup> / Elm 10" N 16 3/4 E 63 1/2 =  
with road S 35 E 7.30 to stone at  
SW  $\angle$  B. H. River land = N 3 1/2 E 13.46  
to N line sec N. Ash 14" S 41 E 10 <sup>00</sup> /  
Elm 10" S 18 1/2 W 26 1/2 = with N line  
sec S 37 W 3.10 to beg con. 53 24 a

E Pratt to Bounon 53.02 a. Oct. 86  
Bounon to Pratt except last  
corner of last S 87 W 3 6.10 ch  
to beg.

Homerature Pratt Run

In Progress to the Regener. Pass  
Oct 73

Part of Stewart-lic  
Reg. N.E. - W part lic - S 80 m  
15. Rock to post. ~~Paterson~~  
Or. O. 15° S 40 E 15' of Red Elm 8'  
S 1/2 or 26 = S 3/4 m 15.53 h. 2 m  
mid. road = with post 3.32 4.13 post  
= 170 3/4 E 2.16 S 12 E 3.62 post on  
Or. Bank. Or. O. 24 15 30 E 28  
E of Hick 20 15 45 12 = up River  
with mound to Regener 20 a.

N. Stewart Lic +. Aug notes

- 7 { Bell. oral. 36 S 12 W 10
- { Or. Hick 14° S 32 E 34
- 8 { Aug 12 N 47 W 37
- { Elm 7 N 34 E 50
- 9 { Bush 20 S 5 E 21
- { do 24 S 5 1/2 W 20
- 10 { Or. Oak 12 N 58 W 27
- 11 { Hick 8 S 47 W 4
- 12 { Bush 28° N 10 E 52
- 13 { do 18 N 44 1/2 E 17