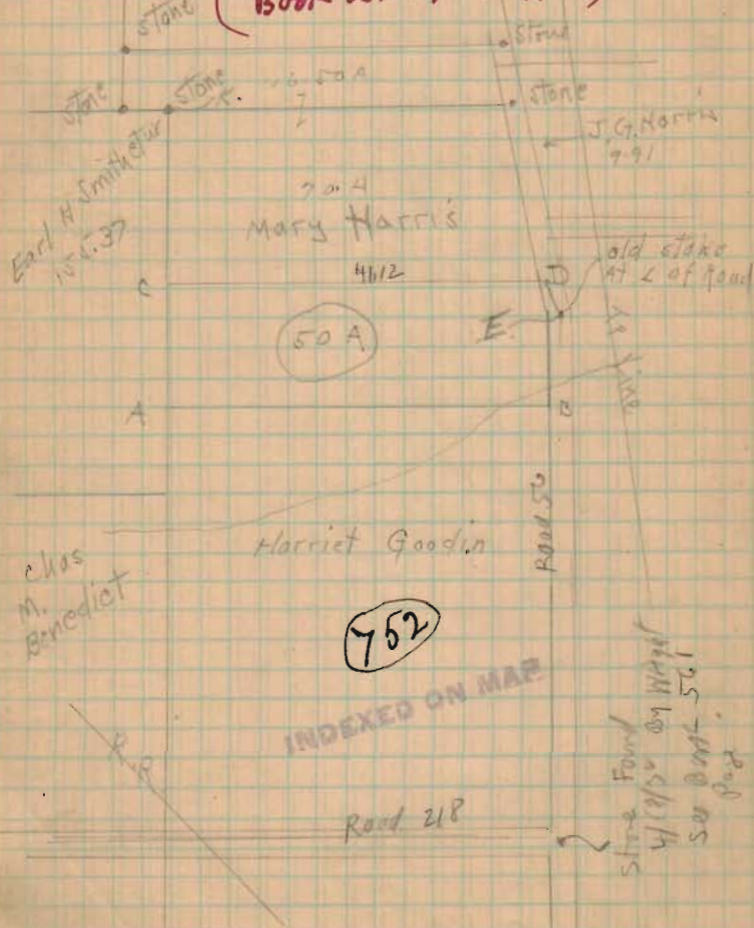


Survey Mary Harris Farm  
 N.E. 1/4 Sec 1 - T. 2 - R. 15 - Harrison Tp.  
 50 Acres off S. End  
 Harold Harris & Father ch & Rod.

(See Summary of Road 56  
 Book 561 Page 112 & 12) April 1932



9/33/13

= Notes =

No stone at "A". Harris says he had a post was set in place of stone.

off set 8' south of Line "AB" for about 1/2 - thence G' North.

Line "AB" =  $N 86^{\circ} W$  41.45 Chs.

Line "AC" =  $N 40^{\circ} E$  12.10 Chs.

off set 30' West from A & Stone at "K"

$\angle BAK = 89^{\circ} 47'$

set stake at "c" on old rail fence.

Old Road at "D" =  $1/2$  - Between fences. distance between fences = 39'.

Line "CD" =  $S 86^{\circ} E$  41.12 Chs.

Line "DE" =  $S 14^{\circ} E$  1.52 Chs. Found old stake at "E" 100.32 Feet

Line "EB" =  $S 4^{\circ} W$  10.47 Chs. Passing bridge at 9.47 Chs. 611.02 Feet

Area "ABERC" = 49.86 A.

Move Line "CD" North 2.24' to make 50 A.

says he  
 Harris will set iron Bars at 4