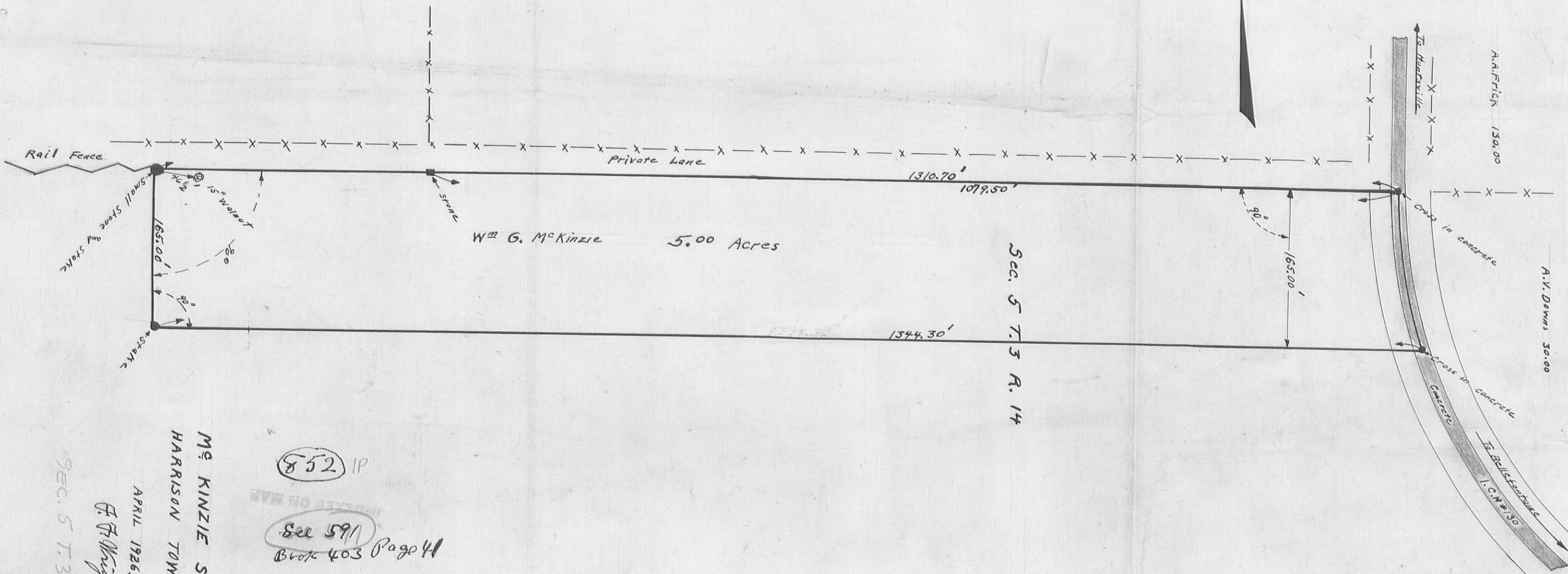


852

INDEXED ON MAP

C.R. Shaffer 72.45



Wm G. McKinzie 5.00 Acres

Sec. 5 T. 3 R. 14

Mc KINZIE SURVEY  
HARRISON TOWNSHIP

852 IP

See 591  
Book 403 Page 41  
See Book 570  
Page 15

INDEXED ON MAP

APRIL 1926.

F. H. Wright C.E.

SEC. 5 T. 3 R. 14