

Received 2-11-91

OK (CR)

**LESLIE H. GEESLIN**  
 REGISTERED SURVEYOR NO. 5248  
 P. O. BOX 274  
 RUSHSVLVANIA, OHIO 43347

TELEPHONE: (513) 468-2793  
 DOWNING SURVEY

February, 1991

The following described real estate situated in the State of Ohio, County of Logan, Township of Harrison being part of the north-east quarter of Section 9, Town 3, Range 14 B. M. R. S. and more particularly described as follows:

Beginning at a 3/4 inch iron pipe found in the centerline of Township Road 204 at the southeast corner of Don Downing's 15.39 acre tract as described in D. B. Vol. 203 Page 16.

Thence with the centerline of T.R. 204 S. 29° 37' 35" E. 132.25 feet to a 5/8 inch iron bar set.

Thence S. 66° 27' 16" W. 304.15 feet to a 5/8 inch iron bar set, passing a 5/8 inch iron bar set at 25.14 feet.

Thence N. 29° 37' 35" W. 132.25 feet to a 5/8 inch iron bar set in the south line of Don Downing's 15.39 acre tract as described in D. B. Vol. 203 Page 16.

Thence with Downing's south line N. 56° 48' 42" E. 235.74 feet to a 5/8 inch iron bar set.

Thence again with Downing's south line S. 84° 43' 00" E. 81.89 feet to the place of beginning.

Containing 1.056 acre, of which 0.079 acre is in the right-of-way of Township Road 204.

The above described 1.056 acre tract being all of Don Downing's 0.43 acre (0.256 ac. calc.) tract as described in D. B. Vol. 199 Page 375, and the remaining 0.800 acre is in the northeast corner of Don Downing's 17.35 acre tract as described in D. B. Vol. 203 Page 16.

Bearings are based on an assumed bearing (S. 29° 37' 35" E.) for the centerline of Township Road 204.

INDEXED ON MAP  
 855 ID



*Leslie H. Geeslin*

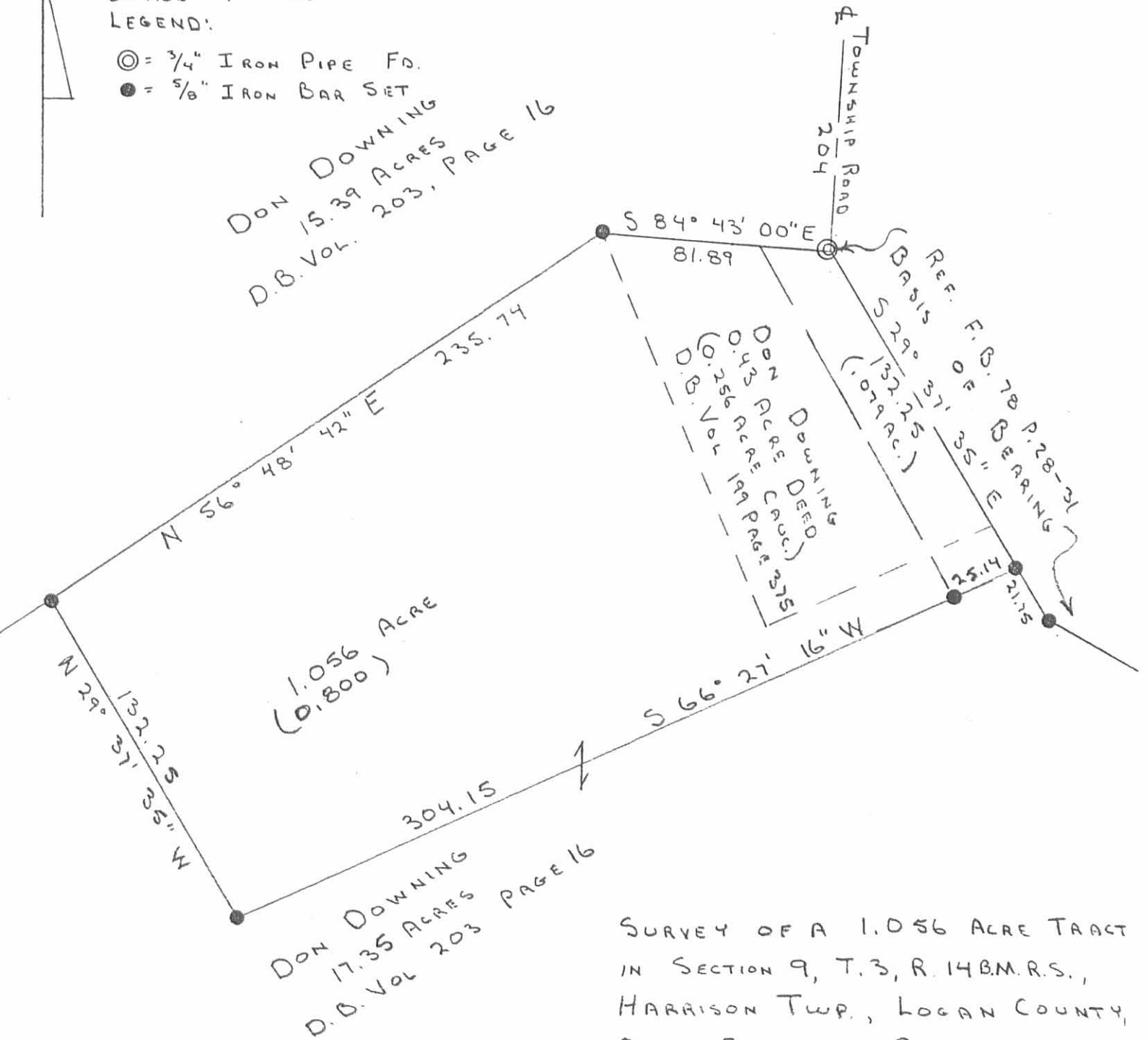
SCALE: 1" = 50'

LEGEND:

⊙ = 3/4" IRON PIPE FD.

● = 5/8" IRON BAR SET

DON DOWNING  
15.39 ACRES  
D.B. Vol. 203, PAGE 16



SURVEY OF A 1.056 ACRE TRACT  
IN SECTION 9, T.3, R. 14 B.M.R.S.,  
HARRISON TWP., LOGAN COUNTY,  
OHIO. FEBRUARY 8, 1991  
FOR DON DOWNING



*Leslie H. Geeslin*  
LESLIE H. GEESLIN  
RUSHSVLVANIA, OHIO

INDEXED ON MAP  
855 IP

10

9

5

6

8

With road N 87 1/2 W, 100

See Sid Lake & Old Bank Good Survey

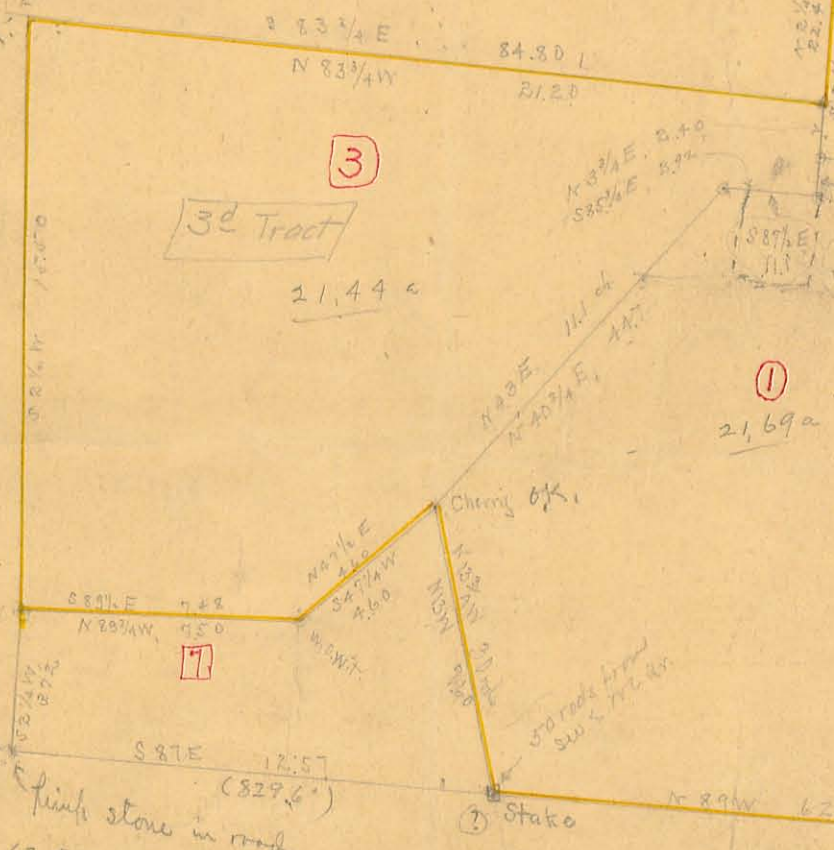
E 65.8

S 2 1/2 W, 66

N 3 1/2 E 67

S 2 1/2 W, 19  
Is this corner correct?

555 Weymouth Survey  
20 Harrison & Co  
INDEXED ON MAP Sec 9 T 3 R 14  
H.S. Dickey



SW 1/4 NW 1/4

12.57
66
7542
7542
829.62

Thomas Weymouth Survey



Ewing Survey Harrison Twp. 17.35 Acres Oct. 1950

The following described land in Harrison Township, Logan County Ohio and being in Section 9 Town 3 Range 14

Beginning at a post at the N.E. corner of Charles H. Downing's 95.72 acre tract thence with the North side of said Downing tract N. 87° - 30' W. 860.0 feet to a post at the S.E. corner of Lucy A. Dickinson's 5.44 acre tract the last described line also being the North side of the S.E. Quarter of said section 9 thence with the East side of said Dickinson 5.44 acre tract N. 13° - 00' W. 501.6 feet to a concrete marker in the South line of Don Downing's 10.53 acre tract thence with the S.E. side of said Downing 10.53 acre tract N. 53° - 00' E. 789.0 feet to a post at the N.W. corner of a small tract of land in the name of Don Downing also known as the George Weymouth 0.43 acre tract thence with the present fence at the West side of the Weymouth tract S. 25° - 30' E. 152.0 to a post thence with the South side of the Weymouth tract N. 64 - 00 E. 88.5 feet to the center of Logan County Road Number 204 ( also known as the Kaylor Mill Road ) thence with the center line of Road Number 204 S. 33° - 13' E. 41.5 feet to an iron thence again with the center of Road Number 204 S. 64 - 33 E. 252.0 feet to an iron pipe thence S. 2° - 52' W. 758.0 feet to the place of beginning said tract containing 17.35 acres.

cc  
E.K.Core  
Logan County Engineer

855  
3D



75 S2503

Silver Lake Pike

Road # 11

Wm. A. Shafer  
52.26  
Vol. 103 p. 48

Anna A. Hooley  
45.38

N.E. Qr  
HARRISON

Sec. 9-3-14  
TP.

• = Stone mentioned in deed

Thomas S. Weymouth  
60.38  
Tract 3 = 21.44a  
Vol. 103 p 419

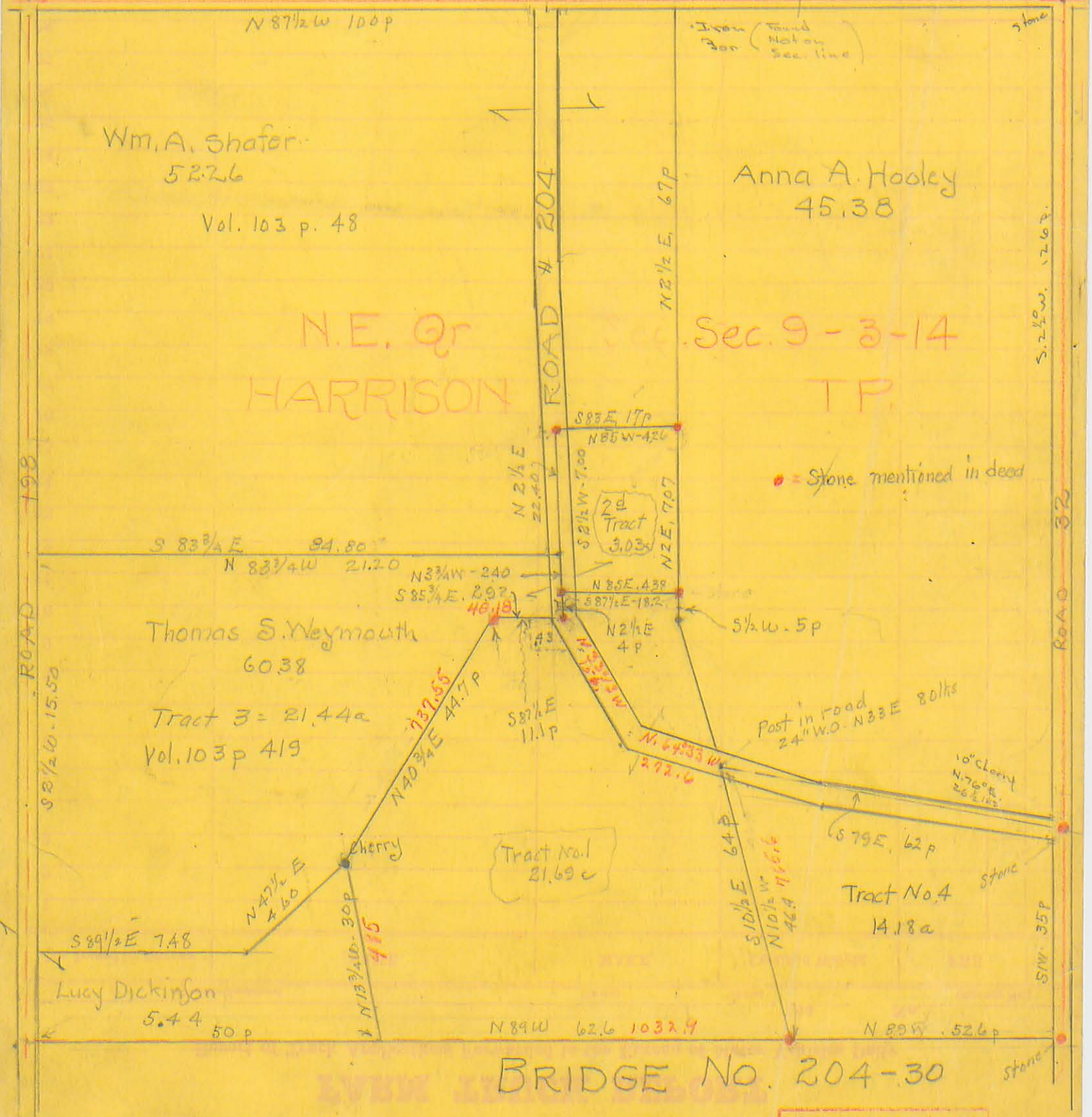
Lucy Dickinson  
5.44  
50 p

Tract No. 1  
21.69c

Tract No. 4  
14.18a

BRIDGE No. 204-30

INDEXED ON MAP  
855 4P





Delruk - Horseman Surv.

Oct 20 - 1911

Start from bar. @ road NW  
Culberson 7a.

South with @ road

7.05 pc. flat iron, SE < Culberson

- West with S. line Culberson

10.05 iron bar, SW < Culberson

37.97 wire fence - road

40.54 @ anchor post. <

Van Horn, Geo Horn,

Start at 37.97 previous line

- North with E. line Horn

20.24 line Horn - Brennan - west

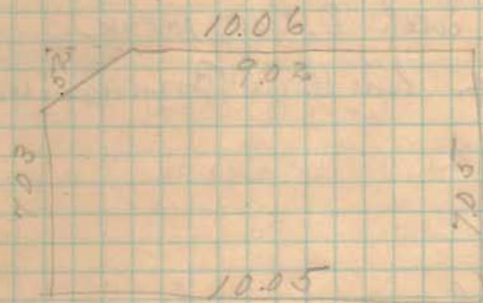
- E. along or near dividing  
line

19.00 stake for disc

38.24 @ road

Stake at 38.5

38.5



Cse. Road, E. side N 5 E.

Meas. N. from Culberson NE  $\angle$  12.65

= 19.70 from Culberson NE  $\angle$ .

Set up gas pipe in  $\odot$  road  
= NE  $\angle$  Finnerman's track

Meas S. 54  $\angle$ s (2024 - 54 = 19.70)

NW  $\angle$  = 19.70 from SW  $\angle$

Cse. Boundary line = S 84  $\frac{1}{2}$  E

NW  $\angle$  Sec 8.

Sec 8 T 3 R 14  
UNION TP.

Detrick

Brenner

54

Pipe

38.24  
584  $\frac{3}{4}$  E

Finnerman

68.00 a

N 4  $\frac{1}{4}$  E

19.70

54

54

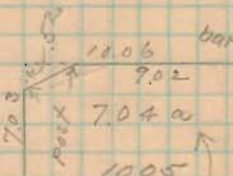
257

POST

27.97

37.97

bar



N 5 E

19.70

7.03

bar

$\odot$  Sec. 8.  
SE  $\angle$  NW  $\angle$

Mary E. Culbertson

841



Heber McCracken  
D.D. Williamson Lusa  
Dec. 19, 1911

Heber McCracken }  
D.D. Williamson } ch. in  
Samuel L. Spencott } at sta

Start stone in road at line  
Williamson & Keenan just S. of  
Doko Lake.

With Anchor Post in fence  
line. West. In line with stone  
44 1/2 lks.

Mean S. with O road

24.62 in line with wire fence  
west & rail fence east.

D.D. Williamson (and Heber McCracken  
with state that these fences have  
been in present location for 30 or 40  
yrs, & always recognized & accepted  
as line.

24.62 set stone in O road being  
8 1/2 S of Section

657

Set S. 4 feet  
Westward along Sec. line  
1993 - W. line D.D. W.  
33.73 E. line of "Phonograph" Hoops  
at this pt. new fence as built  
by Roth is 22 lks S. of anchor  
post. Only Heber McCracken (and  
D.D. W. state that this anchor post  
is in old fence line as stood for  
30 or more years. New fences  
built since 2 yrs ago in line given  
by Frank Hoops.

38.50 O anchor post  
38.52 O rail fence, south = NW ~~McCracken~~  
38.58 telephone post  
51.50 O Carlisle pits (on road west  
Roth's fence. Heads toward O  
of road. This road not straight

51.17 anchor post E side Carlisle  
at L. Line follows a Roth

Set stakes for depth at 5, 10, 15, 20, 25,  
30, 35 & 40 ch.

Random Set these stakes  
in random, starting 4' S. at E end  
N 84 3/4 W

at 33.73 Random cut 6 lks  
N of anchor post.



Miss S, from stone at NW  
 Ch. lot. for 7.03 anchor  
 post = 32.73 previous page

Corrections.

Random line should run 4' S. of  
 anchor post. 4' = 6 lks.

1. Random should run  $6+6 = 12$  lks  
 S. at 32.73

32.73 / 12, 000 (356 link per chain)  
 10 119  
 18810  
 16865  
 19450

356	x 5 = (correction for 5 ch)	1.780 lks
352	x 10 = 10 ch =	3.52
356	x 15	5.34
356	x 20	7.12
356	x 25	8.90
356	x 30	10.68
356	x 32.73 (chks lks.)	12.02 lks
356	x 38.50	13.71

at 3850 corrected line = 20' 8" N. of  
 N. side anchor post at NW McConahan

Set south at each stake as per  
 corrections on opposite page,  
 this gave random, 4' south  
 of true line.

Then set stakes 4' north of each  
 point, = true line.

Samuel B. Lippincott

Real Estate  
 Mason - Ohio

Admr - McCracken Estate

657

Thos. Weymouth Surv.  
 Mch 21 - 1912

Found stone, N. line covering at SW  
 corner of 4. meas. 5. set stake  
 for dist at 12.00 dist.  $\odot$  road  
 13 dist. stone. (Dead = 52.6 rods)

Found stone, cherry with in front  
 of Frank Ross Res. Meas. 5  
 Set stake for dist at 9.00  
 gone to W & 9.02 (Dead = 35 rods  $\pm$ )  
 (See p. 104)

Found Stone, @ Sil Lake Pike at  
 Chain corner Stone = 12" below  
 gravel. Set stake at stone.  
 Temporary unit - Anchor post NE  $38\frac{1}{2}$  lks  
 Tel. pole EE  $37\frac{1}{2}$   
 Anchor post SW  $38\frac{1}{2}$

Forked cedar NW  $53\frac{1}{2}$   
 This stone is near  $\odot$  gravel N & S, E & W  
 Wire note in top boulder - NE 49 lks

Start at this stone & meas. W. with  $\odot$   
 Sil Lake Pike.  
 at 16.44, wire gone S. = E line,  
 gone. Long dug for stone in pike,  
 did not find.  
 (Dead = 65.8 rods)

(See top of page 102)

Apr. 5 - 1912

Found Stone, 884, 3.03 c. cut  
 across on top. This stone is 5.06 lks  
 S. of NE of tract.

Found iron pin 20" under gravel  
 in road at NW  $\angle$  3.03 c. to SW  $\angle$   
 gone. Placed large flat limestone  
 on end, with X on top immediately  
 over this pin. & set per brick bats

Found old fence posts on N. line of  
 3.03 c. tract (dead) call for palmy  
 fence. This fence line strikes pin  
 in road at NW  $\angle$  3.03 c.

Start at Stone as set in road at NW  $\angle$   
 3.03 c.  $54\frac{1}{2}$  W. with road

at 5.61 set flat limestone on edge  
 with X on top. (Note this line  
 produced to 7.00 will be 4.38 from  
 stone as found at SE  $\angle$  3.03 c.)

Wire 12" low near NE  $\angle$  bridge  
 $61\frac{3}{4}$  E, 133 lks.  
 (planted per tile with stone)



line Weymouth-Jones

Commence 5.61 previous page

N 82 1/4 W

at 21.15 set stake temporary in road  
in line previous fence, measurements  
4.6 lbs west from large oak which  
in fence line.

New with

14" High

S 52 E

61 lbs

20" Blk Oak

N 14 3/4 W

127 1/2 lbs

New stake is 2.77 from stone, N

side rd Lake pike at &lt; Cobb - Lippincott

3 nails Y in W floor

855

Commence again at stone N line Ewing  
at SW & West 24 (See p 96.)  
Meas. W

at 2.57 stone &amp; Ewing @ Ormsen

(Set 10 N, at each of these stones a produced  
line indicated.)

Random 110' N) N 85 1/4 W

8.39 stake in Random

10.17

16.62 post claimed by C. Kaylor as  
his E. line. (died 1-6-260. broods)

13.62 stake in random (= 12' from fence line)

24.00 stake in random 20' S. of 1 1/2' random

29.54 @ road - S. of Blue Oak

Random comes 40.5' S. of fence line E.  
& rail fence W. between Dickson & Beck.  
found no stone or corner of any kind

(See p 113.)

Start at about 28.54 & meas. N. along @ road  
at 37.7 blue keel marks in bridge floor  
at 15.64 fence (= 19.36) stake also set  
in road (p 98)

15.64 - 15.50 = 14 lbs long.

14 lbs = 1/10 - of 140. See p. 100

End line Weymouth & Nasher at 3.75.  
a blue mark in bridge floor 1/2 way between  
ends 11.6' from S. end to W. floor @  
32.3' from N. end of floor.

Start at Cherry Tree

S 10 E

at 7.69 = fence row. fence = 2' to  
far South (- 3 lbs)

7.69 - .03 = 7.66 to line Brannet.

7.66 - 7.60 = .06 surplus = (1% -)

(15.25 + 1% = 15.78) (See also p. 99.)

at 7.66 drove stake in Brannet line  
for 8 E & Kayler & S W & Waymouth.

being 85 links E. of post (= 16.62 p. 99)  
= 15.77 of line on p. 99.

855

Start again at Cherry Tree

(Needle var. 3°)

S 50 1/4 W.

at 4.60 Set stake in fence row  
on S bank of J. Creek

In order to miss creek & keep away from back-  
ing fence - set ins. S 28 1/4 E, 52 1/2 lbs

Fence runs roughly S 87 1/2 W

7.50 temporary stake

fence from this stake to 3 nails in bridge  
floor (see both p. 98 & 99)

N 14 1/2 W. 105 lbs

Complete csa & dist. from 4.60 top of  
this post to 3 nails in br. floor

(By plotting = N 89 W - 7.50)



Apr. 12 - 1912

Thos. Weymouth Surv. Continued

Set stake in Sil Lake Pike from  
Cobb's wit. in Sil Lake side bank.This point is 2 lbs w. of wire fence  
S. or  $16.44 + 0.2 = 16.46$  from stone at  
X road. Drive 10' bar 4' long

Set. W. 8'

- with Jones - Rooms line

S  $3\frac{1}{2}$  W16.67 NE  $\angle$  Weymouth 303 a.Drive  $\frac{1}{2}$ " galvanized gas pipe:

Wt = 8" dia in line w. 27 lbs

(See - N. line Weymouth 303a = N  $82\frac{1}{2}$  W  
42.4 1/2)23.73 stone S  $\angle$  Weymouth 303c

25.00 stake in B-J-Creek

Set stake for line, top N. bank

25.10 Drive  $1\frac{1}{4}$ " bar, 4' long in CreekThence S 7 E (Random) with old  
fence.

4.10 stone in Random

4.10 O road

15.83 - Ewing line, 14 lbs E of

stone at 1500' track #4

(Died = 64 rods.) Shortage = 17 lbs

or saw 4 lbs shortage in 440 ch. = 12 rods

Easting 14 lbs in 1583 ch. or 4 lbs in 4.86 ch

(Continued next page)

Set N. 4 lbs =  $\times$  corrected W. 4 lbs $\therefore$  Dist; corner in Creek to  $\angle$  in line = 4.36 $\rightarrow$  Set stone at 4.86  $\textcircled{1}$  4 lbs W. of randomCorrected Cor = S  $6\frac{1}{2}$  E $\rightarrow$  Painted limestone & per cement tileThence from this stone as set to stone  
in front of Frank Koons res. (p. 96)S  $76\frac{1}{2}$  E, 15.48

See top of page 99

Produced this 10' offset line east.

at Co. Road - Came out 19' N. of  
Ewing - Weymouth fence line, as built  
in agreement by Ewing & Weymouth.13.11 Drive iron bolt, 90' from  
stone at Frank Home

See p. 96.

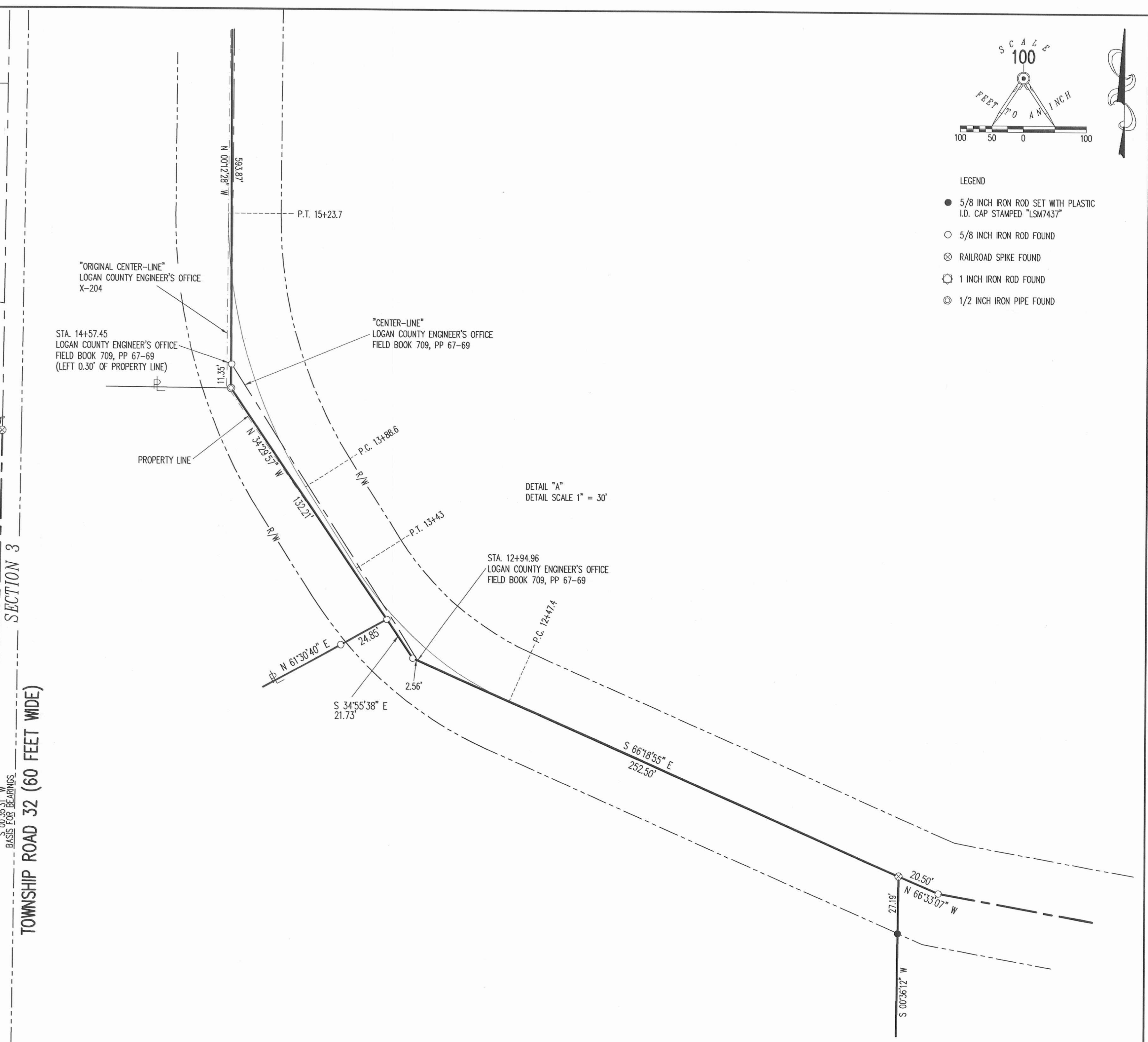
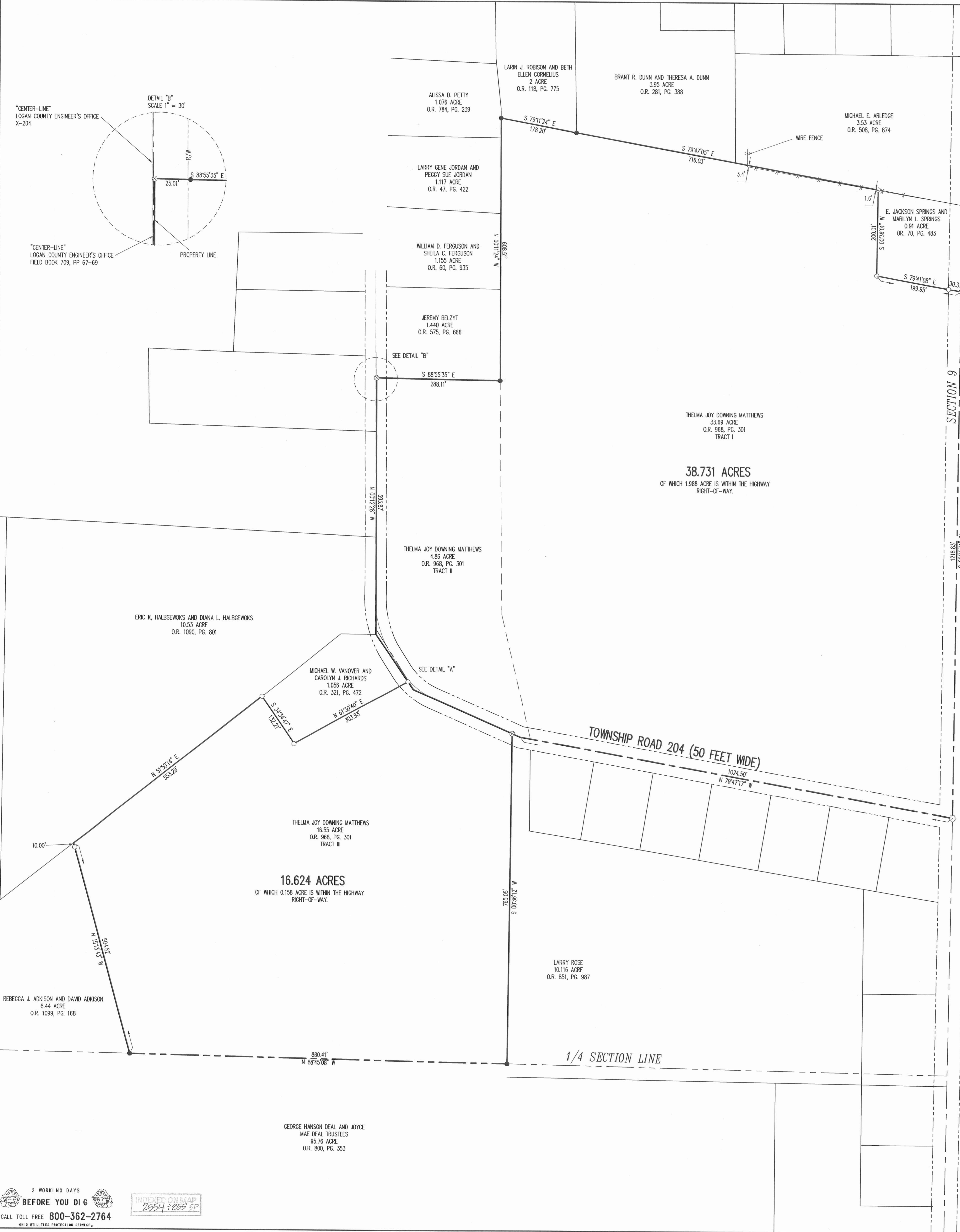
Set over stone at Frank Koon, B.S.  
on stone on oil boiler pile

8 4/4 - W

9.02. Some iron bolts.

855





RETRACEMENT SURVEY OF THE  
THELMA JOY DOWNING MATTHEWS  
33.69 ACRES, 4.86 ACRES AND 16.55 ACRES  
OFFICIAL RECORD 968, PAGE 301  
TRACTS I, II AND III  
SECTION 9, TOWN 3, RANGE 14 B.M.R.S.  
HARRISON TOWNSHIP  
LOGAN COUNTY, OHIO

SURVEYED BY:  
*William K. Bruce*  
WILLIAM K. BRUCE  
PROFESSIONAL SURVEYOR 7437  
JANUARY 8, 2014

COPYRIGHT 2014 BY:  
LEE SURVEYING & MAPPING CO.  
117 North Medriver Street, INC.  
BELLEVILLE, OHIO 45311  
(937) 584-7335  
WWW.LSMINC.US  
SURVEYS@LSMINC.US  
ADW D014 56641213 L-5664-2