

Dennis Moore

M & Moran Bros.

F Kulp

Snapp

ELEVATOR

Pub. Road

ROAD

Alice Moore

Snapp

Robert Braden

40'

SECT. 32 - PUBLIC

ROAD

1/4 SEC. 30

1/4 SEC.

40'

35 33

1756 984

LEWISTOWN 3 MILES

TO BELLEFONTAINE 5 MI.

1794 936  
M.P. 39

1223 0913

1292 61 171

45° 20'

1287 485

1287 723

1286 524

43° 31'

1784 97 48" 110

33 36'

M & Moran  
T. & O. C. RY.  
HAZELTON

HARRISON TWP. - LOGAN CO.

Sc. 1" = 100' 8-18-'09

Sec 30 T 3 R 14

857

IP

# Lee Surveying and Mapping Co.



Farm Surveys • Lot Surveys • Topography • Subdivisions • Construction Layout

855 EAST SANDUSKY AVENUE  
BELLEFONTAINE, OHIO 43311

(513) 593-5780

CLAYTON M. LEE, P.S.  
JEFFREY I. LEE, P.S.

## DON ROPP (3.326 ACRES)

Lying in the northeast quarter of Section 30, T-3, R-14, Harrison Township, Logan County, Ohio.

Being a part of that 20 acre tract in the name of Ropp as deeded and described in Volume 400, Page 557, Tract III, of the Logan County Records of Deeds and being more particularly described as follows:

Beginning at a railroad spike found at the intersection of the center-lines of County Highway 13 and County Highway 31.

THENCE, with the center-line of County Highway 13. N 85°-17' W, a distance of 418.00 feet to a railroad spike for THE TRUE POINT OF BEGINNING.

THENCE, continuing with the said center-line of County Highway 13, N 85°-17' W, a distance of 275.00 feet to a railroad spike (set).

THENCE, N 4°-11'-40" E, a distance of 661.66 feet to a 5/8" iron rod set on the right-of-way line of abandoned T. & O.C. Railroad.

THENCE, with said right-of-way line, S 41°-06'-40" E, a distance of 386.84 feet to a 5/8" iron rod (set).

THENCE, S 4°-11'-40" W, a distance of 392.09 feet to the true point of beginning.

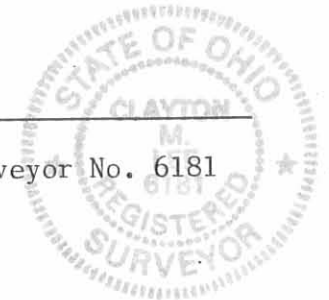
Containing 3.326 acres.

This description prepared from an actual field survey.  
Basis for bearings: Center-line of County Highway 13 = N 85°-17' W.

Prepared by:

*Clayton M. Lee*

Clayton M. Lee  
Registered Professional Surveyor No. 6181  
March 28, 1989



ORIGINAL STAMP IN GREEN

INDEXED ON MAP  
857 2D-1

Received 3-31-89

OK 4-3-89

# Lee Surveying and Mapping Co.



Farm Surveys • Lot Surveys • Topography • Subdivisions • Construction Layout

855 EAST SANDUSKY AVENUE  
BELLEFONTAINE, OHIO 43311

(513) 593-5780

CLAYTON M. LEE, P.S.  
JEFFREY I. LEE, P.S.

## DON ROPP (7.972 ACRES)

Lying in the northeast quarter of Section 30, T-3, R-14, Harrison Township, Logan County, Ohio.

Being a part of that 20 acre tract in the name of Ropp as deeded and described in Volume 400, Page 557, Tract III, of the Logan County Records of Deeds and being more particularly described as follows:

Beginning at a railroad spike found at the intersection of the center-lines of County Highway 13 and County Highway 31.

THENCE, with the said center-line of County Highway 13, N 85°-17' W, a distance of 993.00 feet to a railroad spike (set).

THENCE, continuing with said center-line, N 85°-17' W, a distance of 280.19 feet to a railroad spike found marking the southeast corner of the R.Parent 2.583 acre tract (Volume 408, Page 602).

THENCE, with the boundary of said 2.583 acre tract, the following 2 bearings and distances;

N 4°-43' E, a distance of 450.00 feet to a 5/8" iron rod (found).

N 85°-17' W, a distance of 56.12 feet to a 5/8" iron rod set on the west line of aforesaid 20 acres.

THENCE, with the said west line, N 4°-11'-40" E, a distance of 831.35 feet to a 5/8" iron rod set on the right-of-way line of the T. & O.C. Railroad.

THENCE, with said right-of-way line, S 41°-06'-40" W, a distance of 467.31 feet to a 5/8" iron rod (set).

THENCE, S 4°-11'-40" W, a distance of 955.73 feet to the true point of beginning.

Containing 7.972 acres.

This description prepared from an actual field survey.

Basis for bearings: Center-line of County Highway 13 = N 85°-17' W.

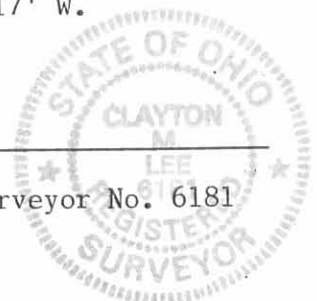
Prepared by:

*Clayton M. Lee*

Clayton M. Lee

Registered Professional Surveyor No. 6181

March 28, 1989



ORIGINAL STAMP IN GREEN

INDEXED ON MAP  
857 2D-2

L-1030

Received 3-31-89

OK 4-3-89 CL

# Lee Surveying and Mapping Co.



Farm Surveys • Lot Surveys • Topography • Subdivisions • Construction Layout

855 EAST SANDUSKY AVENUE  
BELLEFONTAINE, OHIO 43311

(513) 593-5780

CLAYTON M. LEE, P.S.  
JEFFREY I. LEE, P.S.

## DON ROPP ( 5,569 ACRES )

Lying in the northeast quarter of Section 30, T-3, R-14, Harrison Township, Logan County, Ohio.

Being a part of that 20 acre tract in the name of Ropp as deeded and described in Volume 400, Page 557, Tract III, of the Logan County Records of Deeds and being more particularly described as follows:

Beginning at a railroad spike found at the intersection of the center-lines of County Highway 13 and County Highway 31.

THENCE, with the said center-line of County Highway 13, N 85°-17' W, a distance of 693.00 feet to a railroad spike (set). THE TRUE POINT OF BEGINNING.

THENCE, continuing with the center-line of County Highway 13, N 85°-17' W, a distance of 300.00 feet to a railroad spike (set).

THENCE, N 4°-11'-40" E, a distance of 955.73 feet to a 5/8" iron rod set on the right-of-way line of the abandoned T. & O.C. Railroad.

THENCE, with said right-of-way line, S 41°-06'-40" E, a distance of 422.00 feet to a 5/8" iron rod (set).

THENCE, S 4°-11'-40" W, a distance of 661.66 feet to the true point of beginning.

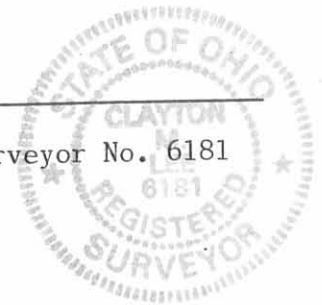
Containing 5.569 acres.

This description prepared from an actual field survey.

Basis for bearings: Center-line of County Highway 13 = N 85°-17" W

Prepared by:

Clayton M. Lee  
Registered Professional Surveyor No. 6181  
March 28, 1989



ORIGINAL STAMP IN GREEN

INDEXED ON MAP  
857 20-3

Received 3-21-89

# Lee Surveying and Mapping Co.



Farm Surveys • Lot Surveys • Topography • Subdivisions • Construction Layout

855 EAST SANDUSKY AVENUE  
BELLEFONTAINE, OHIO 43311

(513) 593-5780

CLAYTON M. LEE, P.S.  
JEFFREY I. LEE, P.S.

## DON ROPP (1.800 ACRES)

Lying in the northeast quarter of Section 30, T-3, R-14, Harrison Township, Logan County, Ohio.

Being a part of that 20 acre tract in the name of Ropp as deeded and described in Volume 400, Page 557, Tract III, of the Logan County Records of Deeds and being more particularly described as follows:

Beginning at a railroad spike found at the intersection of the center-lines of County Highway 13 and County Highway 31.

THENCE, with the said center-line of County Highway 13, N 85°-17' W, a distance of 18.00 feet to a railroad spike set on the right-of-way line of the abandoned T. & O.C. Railroad. THE TRUE POINT OF BEGINNING.

THENCE, continuing with the center-line of County Highway 13, N 85°-17' W, a distance of 400.00 feet to a railroad spike (set).

THENCE, N 4°-11'-40" E, a distance of 392.09 feet to a 5/8" iron rod set on the said railroad right-of-way line.

THENCE, with said right-of-way line, S 41°-06'-40" E, a distance of 562.67 feet to the true point of beginning, passing a 5/8" iron rod set at 519.62 feet.

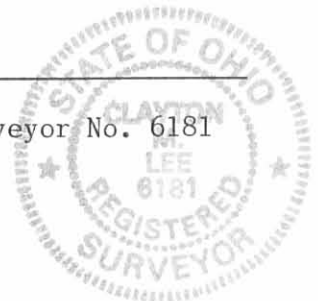
Containing 1.800 acres.

This description prepared from an actual field survey.

Basis for bearings: Center-line of County Highway 13 = N 85°17' W.

Prepared by:

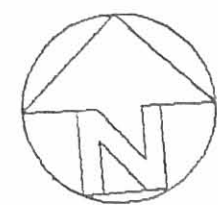
Clayton M. Lee  
Registered Professional Surveyor No. 6181  
March 28, 1989



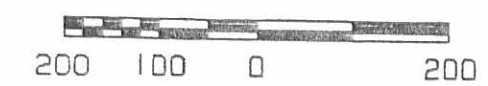
ORIGINAL STAMP IN GREEN

L-1030

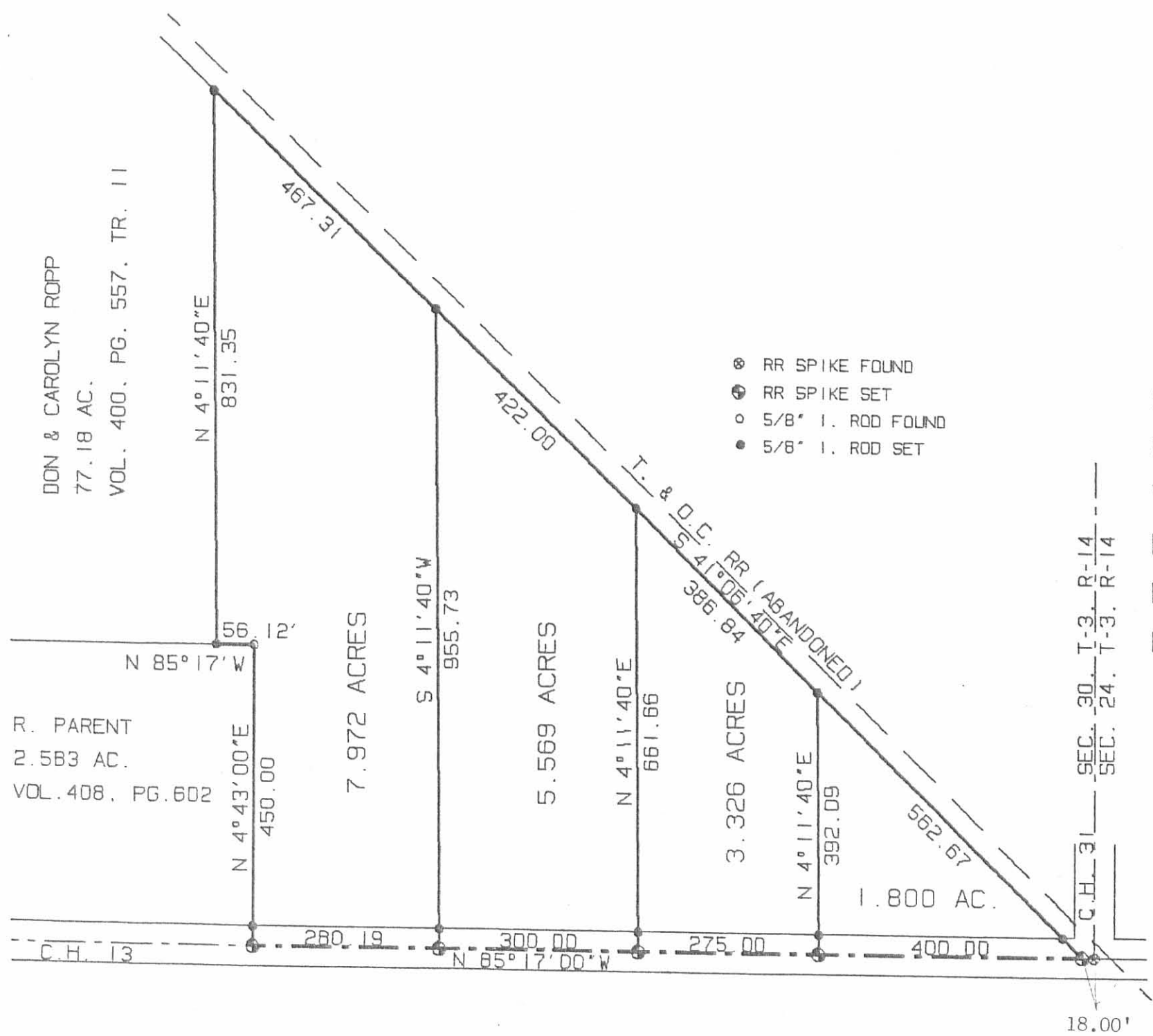
INDEXED ON MAP  
857 2D-4



SCALE 1" = 200'



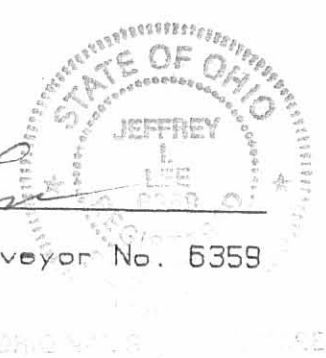
SURVEY OF 4 TRACTS OUT OF THE  
DON & CAROLYN ROPP 20 ACRES  
VOL. 400, PG. 557, TRACT III  
N.E. 1/4 OF SEC. 30, T-3, R-14  
HARRISON TOWNSHIP  
LOGAN COUNTY, OHIO



- ⊗ RR SPIKE FOUND
- ⊕ RR SPIKE SET
- 5/8" I. ROD FOUND
- 5/8" I. ROD SET

BY:

*Jeffrey V. Lee*  
Jeffrey V. Lee  
Professional Surveyor No. 6359  
March 1989



Lee Surveying & Mapping Co.  
855 E. Sandusky Ave.  
BELLEFONTAINE, OHIO 43311  
(513) 593-5780

L 1030-4

INDEXED ON MAP  
857 2P