

McPherson Survey

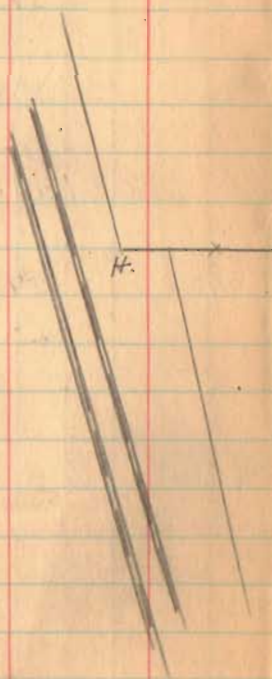
Harrison Trp.

Sec. 7 T 2 R. 15

(See Page 62)

I - Cross in corner (see Page 62)

H - Corner Post (" ")

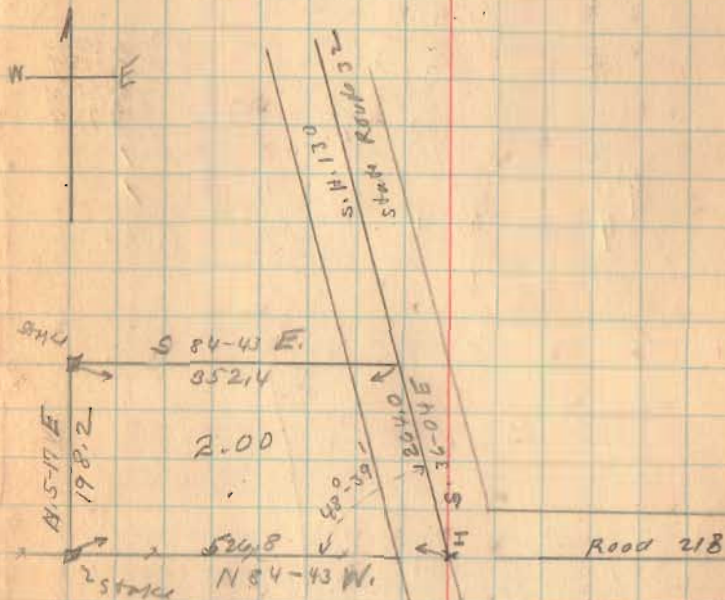


INDEXED ON MAP

1617

April - 3 - 1935
cool - windy
F. Wright
E. Correll

80



10-12-34

63

M^e Pherson Survey

Cosine	Bearing Dist	Sine	Lat (Cosine)		Dist	(Sine)	D.M.D.	N. +	Area (D.M.D.) (Lat.) S. -
			N. +	S. -					
.9787	S 11-51 E 157	.2054		153.7	32.2		32.2		4,949
.9738	S. 13-09 E 271	.2275		263.9	61.7		126.1		33,278
.9637	S 15-29 E 200	.2670		192.7	53.4		241.2		46,479
.9538	S 17-29 E 194 1/2	.3004		185.5	58.4		353.0		65,482
.0860	S. 85-04 E 917	.9962		78.6 78.9	913.0 913.6		1324.4		104,098
.8083	N 36-04 W 587	.5887	474.5			345.9 345.6	1891.5	897,517	
.4597	N 62-38 W 870	.8881	599.9			772.8 772.6	772.8	309,043	
			874.4	874.4	1118.7	1118.7		5,206,560	254,286
			(0.3)	874.7	1119.3	1118.2		254,286	
						(11)	2	952,274	
						43560		476,137	
								10,9306	
								10.93	

(1617)
INDEXED ON MAP

M^e Thomson survey

Cosine	Bearing Dist.	sine	Lat. (Cosine)		D.M.D. (Sine)		D.M.D.	Area (D.M.D. x Lat.)	
			N. +	S. -	E. +	W. -		N. +	S. -
.0787	S 85-29 E 2220	.9969		174.7	2213.4 2213.1	-	2213.4		386,681
.9979	S. 0-44 W. 1325	.0651		1322.9 1322.1		89.5	4337.3		5,954,679
.1013	N 84-11 W 1082	.9949	109.6		1076.2 1076.5		3171.6	347,607	
.8083	N 36-04 W 1780	.5887	1438.0 1438.8		1047.7 1047.7		1047.7	1,506,593	
			1547.6 1548.4	1547.6 1546.8	2213.4 2213.1	2213.4 2213.9		1,854,200	6,341,360 1,854,200
			(1.6)			(0.8)		2	4,487,160
							43560		2,243,580
									51,5055
									51,51

(1612)

M^E Phytson Survey

Cosine.	Bearing Dist.	Sine.	Lat (Cosine)		Dept. (Sine)			Area (D.M.D.) (Lat.)		
			N. +	S. -	E. +	W. -	D.M.D.	N. +	S. -	
.9408	S 19-49 E 200	.3390	188.0 188.2		67.8		67.8		12,746	
.9284	S 21-49 E 200	.3716	185.7		74.3		209.9		38,978	
.9258	S 22-13 E 685	.3781	634.2		259.0		543.2		344,497	
.0921	S 84-43 E 128.1	.9958	118.0		1275.2 1275.6		2077.4		245,133	
.8083	N 36-04 W 1295	.5887	1047.0 1046.8		762.7 762.4		2589.9	2,711,625		
.0860	N 85-04 W 917.	.9963	78.9		913.6		913.6	72,083		
			1125.9 1125.7		1125.9 1126.1		1676.3 1676.7		1676.3 1676.9	
			(0.4)						(0.7)	
								2,783,708	641,354	
								641,354		
							2	2,142,354		
							43560	1,071,177		
								24,5908		
								24.59		

Record 52-14
04-27-94



Lee Surveying and Mapping Co.



Farm Surveys • Lot Surveys • Topography • Subdivisions • Construction Layout

143 EAST COLUMBUS AVENUE
BELLEFONTAINE, OHIO 43311

(513) 593-7335

JEFFREY I. LEE, P.S.

WALTER R. WATKINS 1.581 ACRES South Tract

Lying in Section 7, Town 2, Range 15, B.T.M.R.S., Harrison Township, Logan County, Ohio.

Being out of the Walter R. Watkins 22.59 acre tract as deeded and described in Volume 346, Page 864 of the Logan County Records of Deeds and being more particularly described as follows:

Beginning at a railroad spike found on the center-line of County Highway 130 (60 feet wide), (formerly U.S. Route 33), S 36°-04'-00" E, a distance of 737.00 feet from a 1 inch square bolt found at the intersection of center-lines of County Highway 130 and County Highway 91. Said railroad spike found is the most easterly corner of the W.R. Watkins II 2.000 acre tract (O.R. 133, Pg. 395).

THENCE, with the center-line of County Highway 130, S 36°-04'-00" E, a distance of 224.22 feet to a railroad spike set at THE TRUE POINT OF BEGINNING.

THENCE, with the center-line of County Highway 130, S 36°-04'-00" E, a distance of 295.49 feet to a railroad spike set.

THENCE, S 78°-50'-26" W, a distance of 338.64 feet to a 5/8 inch iron rod set, passing a 5/8 inch iron rod set at 33.08 feet.

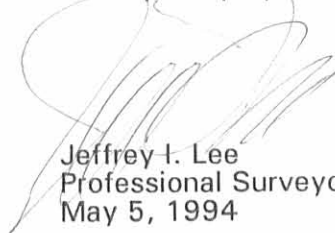
THENCE, N 36°-04'-00" W, a distance of 152.87 feet to a 5/8 inch iron rod set.

THENCE, N 53°-56'-00" E, a distance of 307.14 feet to the point of beginning, passing a 5/8 inch iron rod set at 277.14 feet.

Containing 1.581 acres of which 0.199 acre is within the highway right-of-way.

The basis for bearings is based upon the center-line of County Highway 130 being S 36°-04'-00" E and all other bearings are from angles and distances measured in a field survey by Lee Surveying and Mapping Company on April 26, 1994.

Description prepared by:


Jeffrey I. Lee
Professional Surveyor 6359
May 5, 1994



L-1951

ORIGINAL STAMP IN GREEN

INDEXED ON MAP
1617 1D-1

Received 5-6-94
02-972



Lee Surveying and Mapping Co.



Farm Surveys • Lot Surveys • Topography • Subdivisions • Construction Layout

143 EAST COLUMBUS AVENUE
BELLEFONTAINE, OHIO 43311

(513) 593-7335

JEFFREY I. LEE, P.S.

WALTER R. WATKINS 1.581 ACRES North Tract

Lying in Section 7, Town 2, Range 15, B.T.M.R.S., Harrison Township, Logan County, Ohio.

Being out of the Walter R. Watkins 22.59 acre tract as deeded and described in Volume 346, Page 864 of the Logan County Records of Deeds and being more particularly described as follows:

Beginning at a railroad spike found on the center-line of County Highway 130 (60 feet wide), (formerly U.S. Route 33), S 36°-04'-00" E, a distance of 737.00 feet from a 1 inch square bolt found at the intersection of center-lines of County Highway 130 and County Highway 91. Said railroad spike found is the most easterly corner of the W.R. Watkins II 2.000 acre tract (O.R. 133, Pg. 395).

THENCE, with the center-line of County Highway 130, S 36°-04'-00" E, a distance of 224.22 feet to a railroad spike set.

THENCE, S 53°-56'-00" W, a distance of 307.14 feet to a 5/8 inch iron rod set, passing a 5/8 inch iron rod set at 30.00 feet.

THENCE, N 36°-04'-00" W, a distance of 224.22 feet to a 3/4 inch iron rod found at the southwest corner of the aforementioned 2.000 acre tract.

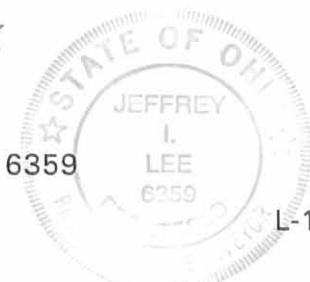
THENCE, with the south line of said 2.000 acre tract, N 53°-56'-00" E, a distance of 307.14 feet to the point of beginning, passing a 3/4 inch iron rod found at 277.14 feet.

Containing 1.581 acres of which 0.154 acre is within the highway right-of-way.

The basis for bearings is based upon the center-line of County Highway 130 being S 36°-04'-00" E and all other bearings are from angles and distances measured in a field survey by Lee Surveying and Mapping Company on April 26, 1994.

Description prepared by:

Jeffrey I. Lee
Professional Surveyor 6359
May 5, 1994



L-1951

ORIGINAL STAMP IN GREEN

1617 10-2



Lee Surveying and Mapping Co.



Farm Surveys • Lot Surveys • Topography • Subdivisions • Construction Layout

143 EAST COLUMBUS AVENUE
BELLEFONTAINE, OHIO 43311

(513) 593-7335

JEFFREY I. LEE, P.S.

WALTER WATKINS (2.000 ACRES)

Lying in Section 7, Town 2, Range 15, Harrison Township, Logan County, Ohio.

Being out of the Walter Watkins 22.59 acre tract as deeded and described in Volume 346, Page 864 of the Logan County Records of Deeds and being more particularly described as follows:

Beginning at a railroad spike set on the center-line of County Highway 130 (formerly U.S. Route 33), S 36°-04'-00" E, a distance of 587.00 feet from a 1 inch square bolt found at the intersection of center-lines of County Highway 130 and County Highway 91.

THENCE, with the center-line of County Highway 130, S 36°-04'-00" E, a distance of 150.00 feet to a railroad spike set.

THENCE, S 53°-56'-00" W, a distance of 307.14 feet to a 3/4 inch iron rod set.

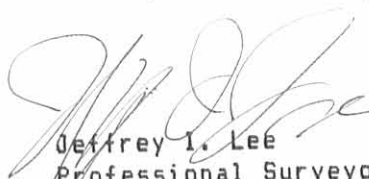
THENCE, N 36°-04'-00" W, a distance of 417.31 feet to a 3/4 inch iron rod set.

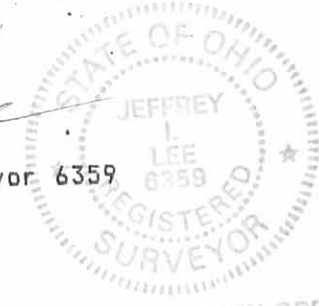
THENCE, with the south line of the Robert H. Clagg 7.00 acre tract (Vol. 298, Pg. 488), S 85°-02'-00" E, a distance of 407.17 feet to the point of beginning.

Containing 2.000 acres of which 0.112 acre is within the road right-of-way.

The basis for bearings is based upon the center-line of County Highway 130 being S 36°-04'-00" E, and all other bearings are from angles and distances measured in a field survey by Lee Surveying and Mapping Company on April 25, 1991.

Description prepared by:

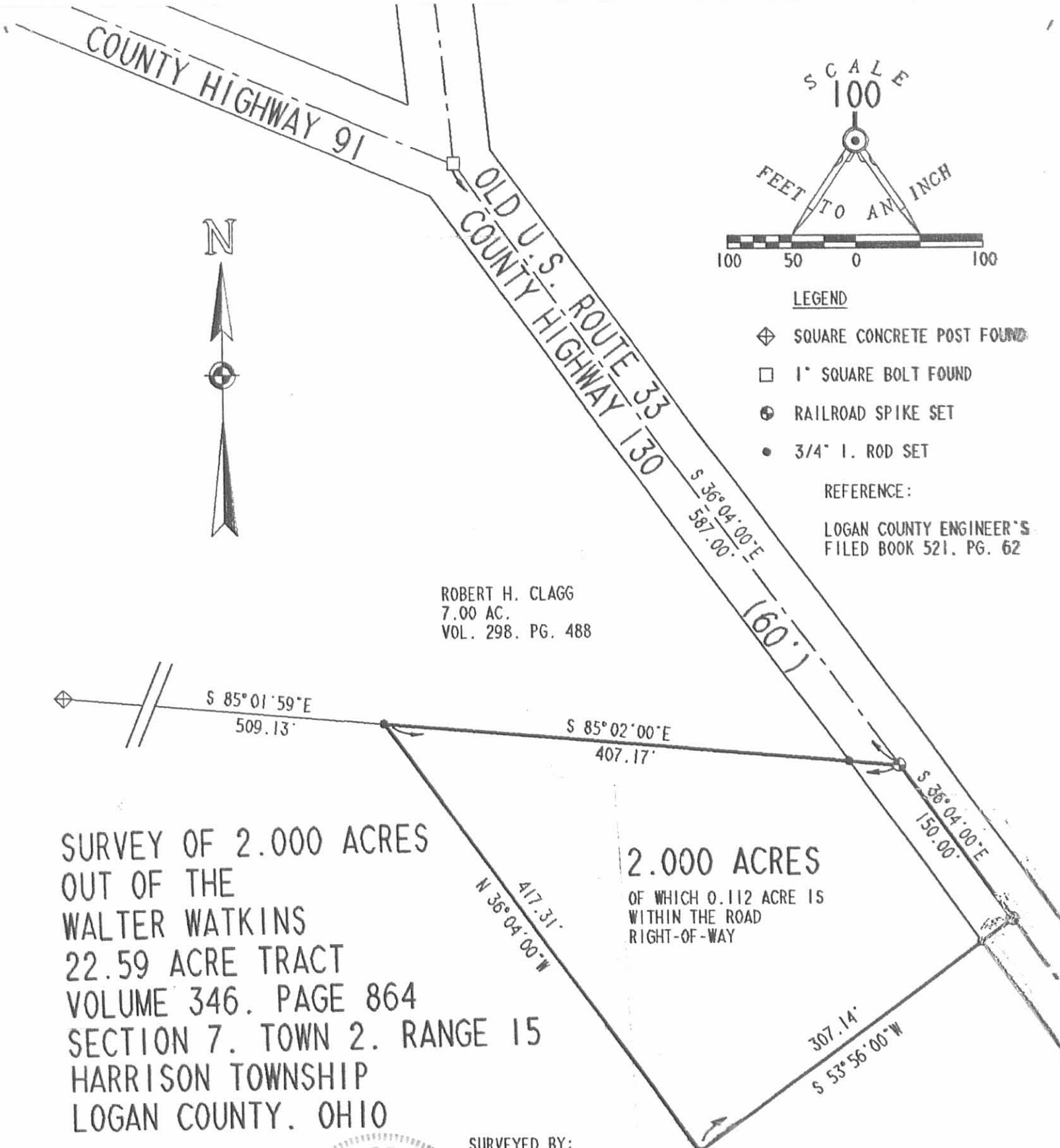

Jeffrey I. Lee
Professional Surveyor 6359
April 28, 1991



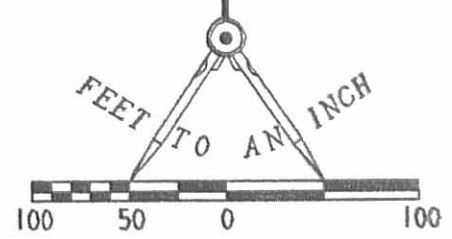
L 1909

ORIGINAL STAMP IN GREEN

INDEXED ON MAP
1617 2D



SCALE
100



LEGEND

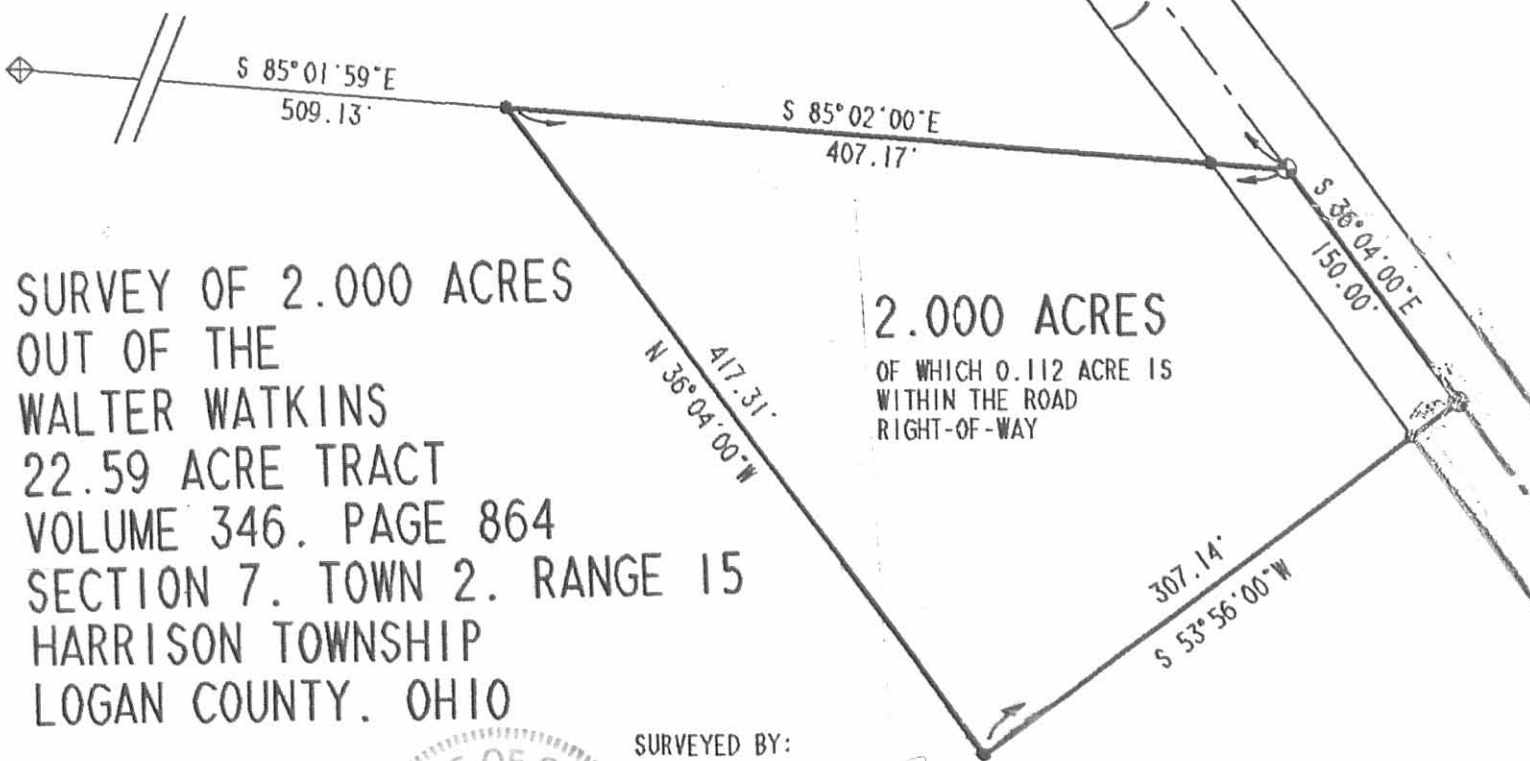
- ◊ SQUARE CONCRETE POST FOUND
- 1" SQUARE BOLT FOUND
- ⊕ RAILROAD SPIKE SET
- 3/4" I. ROD SET

REFERENCE:

LOGAN COUNTY ENGINEER'S
FILED BOOK 521, PG. 62



ROBERT H. CLAGG
7.00 AC.
VOL. 298. PG. 488



SURVEY OF 2.000 ACRES
OUT OF THE
WALTER WATKINS
22.59 ACRE TRACT
VOLUME 346. PAGE 864
SECTION 7. TOWN 2. RANGE 15
HARRISON TOWNSHIP
LOGAN COUNTY, OHIO

2.000 ACRES
OF WHICH 0.112 ACRE IS
WITHIN THE ROAD
RIGHT-OF-WAY

SURVEYED BY:



Jeffrey I. Lee
JEFFREY I. LEE
PROFESSIONAL SURVEYOR 6359
APRIL 25, 1991

LEE SURVEYING & MAPPING CO.
143 East Columbus Avenue
BELLEFONTAINE, OHIO 43111
(513) 593-7335

INDEXED ON MAP
1617 2P

ORIGINAL STAMP IN GREEN

DISK 40 WATKINS

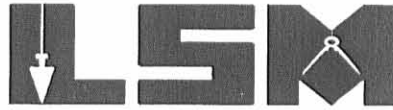
L 1909-5

Received 10-18-02 SJM OK

Lee Surveying and Mapping Co., Inc.

Land Surveys • Topography • Subdivisions • Construction Layout

117 N. Madriver St.
Bellefontaine OH 43311



Phone: (937) 593-7335
Fax: (937) 593-7444

STALEY 1.023 ACRES

Lying in Section 7, Town 2, Range 15, Harrison Township, Logan County, Ohio.

Being out of the James Staley and Bonnie Staley 7.841 acre tract as deeded and described in Official Record 440, Page 903 of the Logan County Records of Deeds and being more particularly described as follows:

Beginning at a stone found at the southeast corner of Section 7 and on the center-line of Township Road 218.

THENCE, with the south line of Section 7 and the center-line of Township Road 218, N 84°-23'-50" W a distance of 1075.84 feet to a point on the center-line of County Highway 130.

THENCE, with the center-line of County Highway 130 (60 feet wide), N 36°-04'-00" W, a distance of 447.44 feet to a MAG nail set at THE TRUE POINT OF BEGINNING, passing a MAG nail found on the southeast corner of the said 7.841 acre tract at 271.52 feet.

THENCE, S 78°-50'-55" W, a distance of 359.08 feet to a 5/8 inch iron rod set, passing a 5/8 inch iron rod set at 33.01 feet.

THENCE, N 11°-09'-05" W, a distance of 136.04 feet to a 5/8 inch iron rod set.

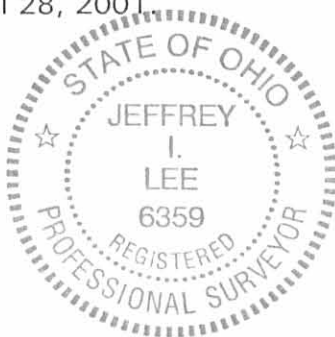
THENCE, N 78°-50'-55" E, a distance of 295.88 feet to a MAG nail set, passing a 5/8 inch iron rod set at 262.87 feet.

THENCE, with the center-line of County Highway 130, S 36°-04'-00" E, a distance of 150.00 feet to the point of beginning.

Containing 1.023 acre of which 0.103 acre is within the highway right-of-way.

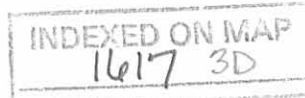
The basis for bearings is the center-line of County Highway 130 being N 36°-04'-00" W, and all other bearings are from angles and distances measured in a field survey by Lee Surveying and Mapping Co., Inc. on April 28, 2001.

Description prepared by:



ORIGINAL STAMP IN GREEN

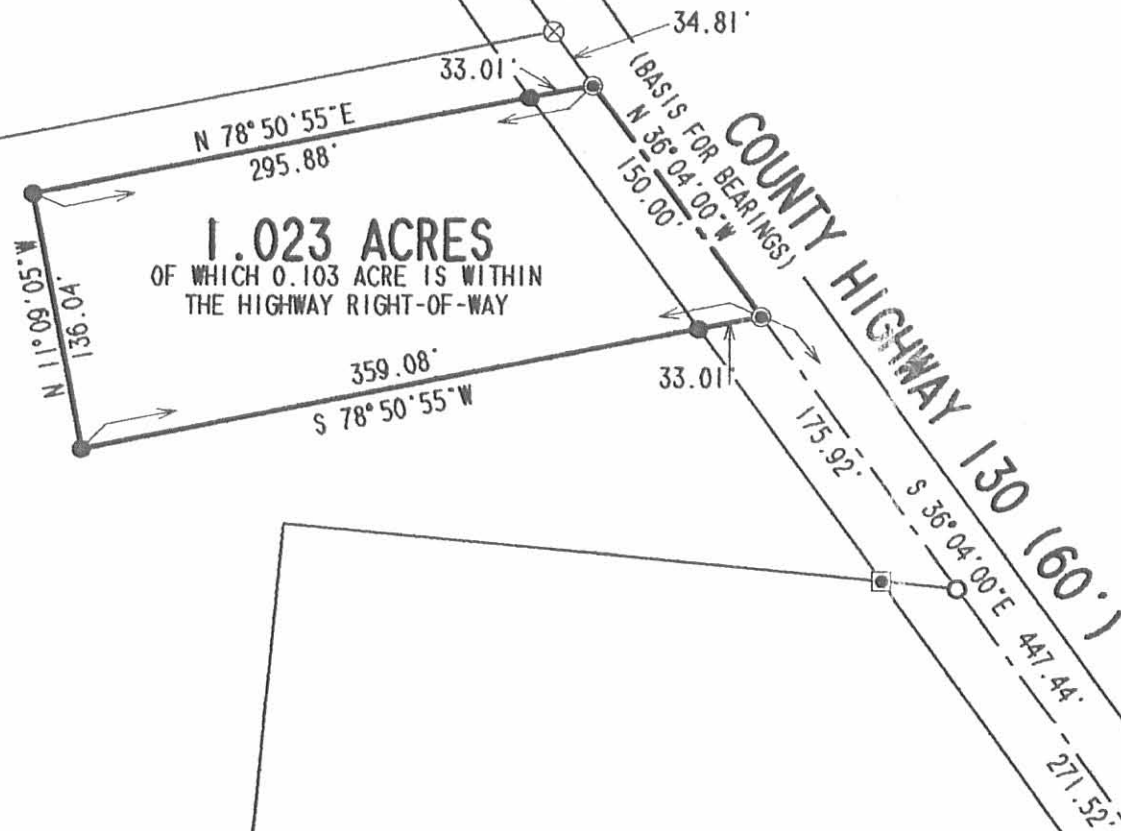
Jeffrey I. Lee
Jeffrey I. Lee
Professional Surveyor 6359
October 7, 2002



L-1909

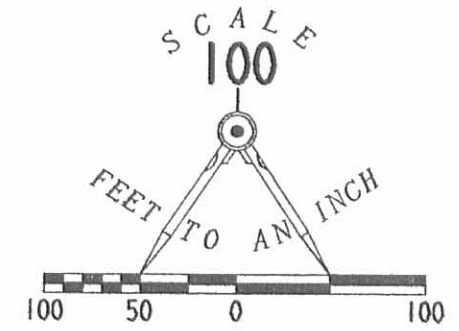
ROBERT C. RITTER
11.154 ACRE TRACT
O.R. 435, PG. 965
TRACT 1

JAMES STALEY AND
BONNIE STALEY
7.841 ACRES
O.R. 440, PG. 903



LEGEND

- 5/8 INCH IRON ROD SET
- 5/8 INCH IRON ROD FOUND
- ⊕ 3/4 INCH IRON ROD FOUND
- ⊠ ANGLE IRON POST FOUND
- ⊙ MAG NAIL SET
- MAG NAIL FOUND
- ⊗ RAILROAD SPIKE FOUND
- ⊞ STONE FOUND



**SURVEY OF 1.023 ACRES OUT OF
THE JAMES STALEY AND BONNIE STALEY
7.841 ACRES
OFFICIAL RECORD 440, PAGE 903
SECTION 7, TOWN 2, RANGE 15
HARRISON TOWNSHIP
LOGAN COUNTY, OHIO**



ORIGINAL STAMP IN GREEN

SURVEYED BY:

Jeffrey I. Lee
JEFFREY I. LEE
PROFESSIONAL SURVEYOR 6359
OCTOBER 7, 2002

COPYRIGHT 2002 BY:
LEE SURVEYING & MAPPING CO., INC.
117 North Madriver Street
BELLEFONTAINE, OHIO 43311
(937) 593-7335

D-398 WAKINS2 L-1909-2

2 WORKING DAYS
BEFORE YOU DIG
CALL TOLL FREE **800-362-2764**
OHIO UTILITIES PROTECTION SERVICE.

INDEXED ON MAP
1617 3P

Received 12-10-93
OK - JFL



Lee Surveying and Mapping Co.



Farm Surveys • Lot Surveys • Topography • Subdivisions • Construction Layout

143 EAST COLUMBUS AVENUE
BELLEFONTAINE, OHIO 43311

(513) 593-7335

JEFFREY I. LEE, P.S.

WALTER R. WATKINS (3.162 ACRES)

Lying in Section 7, Town 2, Range 15, B.T.M.R.S., Harrison Township, Logan County, Ohio.

Being out of the Walter R. Watkins 22.59 acre tract as deeded and described in Volume 346, Page 864 of the Logan County Records of Deeds and being more particularly described as follows:

Beginning at a railroad spike found on the center-line of County Highway 130 (60 feet wide), (formerly U.S. Route 33), S 36°-04'-00" E, a distance of 737.00 feet from a 1 inch square bolt found at the intersection of center-lines of County Highway 130 and County Highway 91. Said railroad spike found is the most easterly corner of the W.R. Watkins II 2.000 acre tract (O.R. 133, Pg. 395).

THENCE, with the center-line of County Highway 130, S 36°-04'-00" E, a distance of 519.71 feet to a railroad spike set.

THENCE, S 78°-50'-26" W, a distance of 338.64 feet to a 5/8 inch iron rod set, passing a 5/8 inch iron rod set at 33.08 feet.

THENCE, N 36°-04'-00" W, a distance of 377.09 feet to a 3/4 inch iron rod found at the southwest corner of the aforementioned 2.000 acre tract.

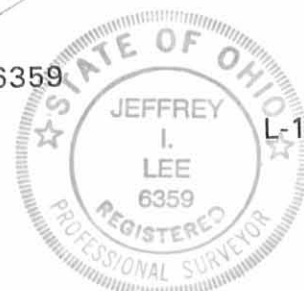
THENCE, with the south line of said 2.000 acre tract, N 53°-56'-00" E, a distance of 307.14 feet to the point of beginning, passing a 3/4 inch iron rod found at 277.14 feet.

Containing 3.162 acres of which .0353 acre is within the highway right-of-way.

The basis for bearings is based upon the center-line of County Highway 130 being S 36°-04'-00" E and all other bearings are from angles and distances measured in a field survey by Lee Surveying and Mapping Company on December 13, 1993.

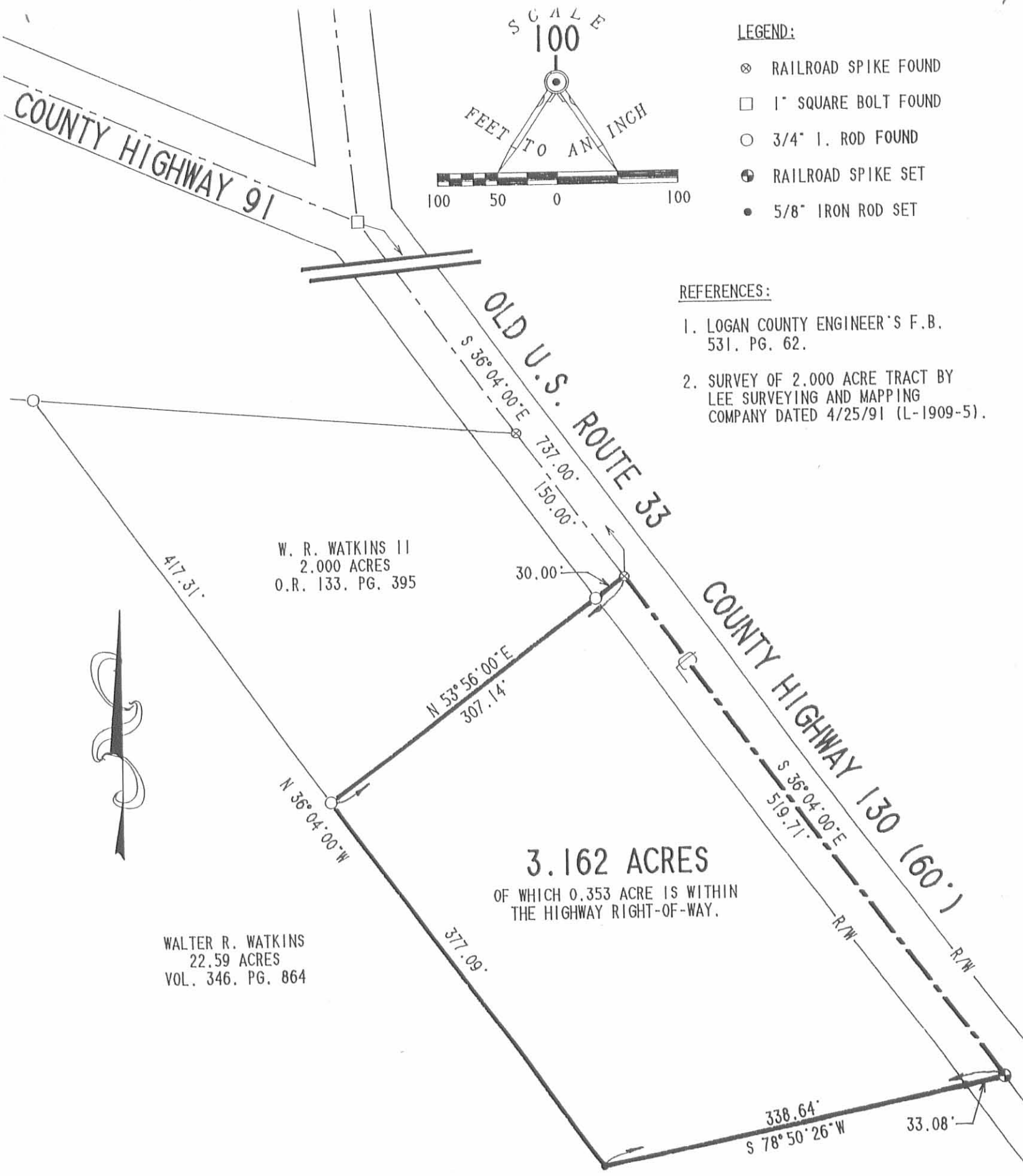
Description prepared by:

Jeffrey I. Lee
Professional Surveyor 6359
December 17, 1993



ORIGINAL STAMP IN GREEN

INDEXED ON MAP
Jl 17 4D



- LEGEND:**
- ⊗ RAILROAD SPIKE FOUND
 - 1" SQUARE BOLT FOUND
 - 3/4" I. ROD FOUND
 - ⊕ RAILROAD SPIKE SET
 - 5/8" IRON ROD SET

- REFERENCES:**
1. LOGAN COUNTY ENGINEER'S F.B. 531. PG. 62.
 2. SURVEY OF 2.000 ACRE TRACT BY LEE SURVEYING AND MAPPING COMPANY DATED 4/25/91 (L-1909-5).

W. R. WATKINS II
2.000 ACRES
O.R. 133. PG. 395

WALTER R. WATKINS
22.59 ACRES
VOL. 346. PG. 864

3.162 ACRES
OF WHICH 0.353 ACRE IS WITHIN
THE HIGHWAY RIGHT-OF-WAY.

**SURVEY OF 3.162 ACRES OUT OF THE
WALTER R. WATKINS 22.59 ACRE TRACT
VOLUME 346. PAGE 864
SECTION 7. TOWN 2. RANGE 15. B.T.M.R.S.
HARRISON TOWNSHIP
LOGAN COUNTY. OHIO**

INDEXED ON MAP
1617 4P

SURVEYED BY:
Jeffrey L. Lee
JEFFREY L. LEE
PROFESSIONAL SURVEYOR 6359
DECEMBER 13, 1993



LEE SURVEYING & MAPPING CO.
143 East Columbus Avenue
BELLEFONTAINE, OHIO 43311
(513) 593-7335

2 WORKING DAYS
BEFORE YOU DIG
CALL TOLL FREE **800-362-2764**
OHIO UTILITIES PROTECTION SERVICE.

Lee Surveying and Mapping Co., Inc.

Land Surveys • Topography • Subdivisions • Construction Layout

117 N. Madriver St.
Bellefontaine OH 43311



Phone: (937) 593-7335
Fax: (937) 593-7444

WATKINS 7.841 ACRES

Lying in Section 7, Town 2, Range 15, Harrison Township, Logan County, Ohio.

Being part of the Opaline Watkins 19.009 acre tract as deeded and described in Official Record 412, Page 105 of the Logan County Records of Deeds and being more particularly described as follows:

Beginning at a stone found at the southeast corner of Section 7 on the center-line of Township Road 218.

THENCE, with the south line of Section 7, the center-line of Township Road 218, the south line of the Gregg D. Southard 2.0 acre tract, (O.R. 423, Pg. 507), and the north line of the Robert McPherson original 106.28 acre tract, (Vol. 403, Pg. 193), N 84°-23'-50" W, a distance of 1606.92 feet to a 5/8 inch iron rod set at the TRUE POINT OF BEGINNING.

THENCE, with the south line of Section 7 and the north line of the said 106.28 acre tract, N 84°-23'-50" W, a distance of 754.99 feet to a 5/8 inch iron rod found.

THENCE, with the east line of the Robert McPherson original 14.435 acre tract, (O.R. 241, Pg. 382), N 22°-09'-59" W, a distance of 284.27 feet to a 5/8 inch iron rod set.

THENCE, N 85°-15'-00" E, a distance of 684.82 feet to a 5/8 inch iron rod found.

THENCE, with the southerly line of the Opaline Watkins 1.581 acre tract, (O.R. 413, Pg. 583), N 78°-50'-55" E, a distance of 338.89 feet to a railroad spike found, passing a railroad spike found at 305.81 feet.

THENCE, with the center-line of County Highway 130, (60 feet wide), S 36°-04'-00" E, a distance of 360.73 feet to a MAG nail set.

THENCE, with the north line of the aforementioned 2.0 acre tract, N 84°-35'-45" W, a distance of 352.00 feet to an angle iron post found, passing an angle iron post found at 39.96 feet.

THENCE, with the west line of the said 2.0 acre tract, S 5°-11'-43" W, a distance of 201.61 feet to the point of beginning.

Containing 7.841 acres, of which 0.244 acre is within the highway right-of-way.

The basis for bearings is the center-line of County Highway 130, being N 36°-04'-00" W, and all other bearings are from angles and distances measured in a field survey by Lee Surveying and Mapping Co., Inc. on November 19, 1999.

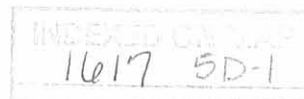
Description prepared by:



ORIGINAL STAMP IN GREEN

Jeffrey I. Lee
Jeffrey I. Lee
Professional Surveyor 6359
November 23, 1999

L-1909



Record 12-1-190914

Lee Surveying and Mapping Co., Inc.

Land Surveys • Topography • Subdivisions • Construction Layout

117 N. Madriver St.
Bellefontaine OH 43311



Phone: (937) 593-7335
Fax: (937) 593-7444

WATKINS 11.154 ACRES

Lying in Section 7, Town 2, Range 15, Harrison Township, Logan County, Ohio.

Being part of the Opaline Watkins 19.009 acre tract as deeded and described in Official Record 412, Page 105 of the Logan County Records of Deeds and being more particularly described as follows:

Beginning at a stone found at the southeast corner of Section 7 on the center-line of Township Road 218.

THENCE, with the south line of Section 7 and the center-line of Township Road 218, N 84°-23'-50" W, a distance of 1075.84 feet to a point on the center-line of County Highway 130.

THENCE, with the center-line of County Highway 130, (60 feet wide), N 36°-04'-00" W, a distance of 927.73 feet to a railroad spike found at the TRUE POINT OF BEGINNING.

THENCE, with the northerly line of the Opaline Watkins 1.581 acre tract, (O.R. 413, Pg. 583), S 53°-56'-00" W, a distance of 307.35 feet to a 5/8 inch iron rod found, passing a 5/8 inch iron rod found at 30.00 feet.

THENCE, with the westerly line of the said 1.581 acre tract, S 36°-04'-00" E, a distance of 152.72 feet to a 5/8 inch iron rod found.

THENCE, S 85°-15'-00" W, a distance of 684.82 feet to a 5/8 inch iron rod set.

THENCE, with the east line of the Robert McPherson original 14.435 acre tract, (O.R. 241, Pg. 382), N 22°-09'-59" W, a distance of 459.16 feet to a 5/8 inch iron rod set.

THENCE, with the east line of the said 14.435 acre tract, a curve to the right having a central angle of 3°-32'-18", a radius of 5480.69 feet, an arc length of 338.45 feet and a chord being N 20°-23'-50" W, a distance of 338.40 feet to a 5/8 inch iron rod found.

THENCE, with the south line of the Robert H. Clagg 7.00 acre tract, (Vol. 298, Pg. 488), S 85°-05'-07" E, a distance of 508.09 feet to a 3/4 inch iron rod found.

THENCE, with the westerly line of the W. R. Watkins II 2.000 acre tract, (O.R. 133, Pg. 395), S 36°-03'-33" E, a distance of 417.34 feet to a 3/4 inch iron rod found.

THENCE, with the southerly line of the said 2.000 acre tract, N 53°-56'-00" E, a distance of 307.18 feet to a railroad spike found, passing a 3/4 inch iron rod found at 277.18 feet.

THENCE, with the center-line of County Highway 130, S 36°-04'-00" E, a distance of 224.21 feet to the point of beginning.

Containing 11.154 acres, of which 0.154 acre is within the highway right-of-way.

The basis for bearings is the center-line of County Highway 130, being N 36°-04'-00" W, and all other bearings are from angles and distances measured in a field survey by Lee Surveying and Mapping Co., Inc. on November 19, 1999.



ORIGINAL STAMP IN GREEN

Description prepared by:

A handwritten signature in black ink, appearing to read 'Jeffrey I. Lee'.

Jeffrey I. Lee
Professional Surveyor 6359
November 23, 1999

INDEXED
161750-2

L-1909

CURVE	DELTA ANGLE	RADIUS	ARC	TANGENT	CHORD	CHORD BEARING
C 1	3° 32' 18"	5480.69'	338.45'	169.28'	338.40'	N 20° 23' 50" W

ROBERT H. CLAGG
7.00 ACRES
VOL. 298, PG. 488

W. R. WATKINS II
2.000 ACRES
O.R. 133, PG. 395

11.154 ACRES
OF WHICH 0.154 ACRE IS WITHIN
THE HIGHWAY RIGHT-OF-WAY

OPALINE WATKINS
19.009 ACRES
O.R. 412, PG. 105

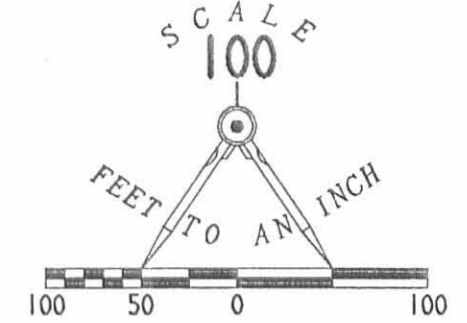
OPALINE WATKINS
1.581 ACRES
O.R. 413, PG. 583

ROBERT McPHERSON AND
SHIRLEY J. McPHERSON
ORIG. 14.435 ACRES
O.R. 241, PG. 382

7.841 ACRES
OF WHICH 0.244 ACRE IS WITHIN
THE HIGHWAY RIGHT-OF-WAY

GREGG D. SOUTHARD
2.0 ACRES
O.R. 423, PG. 507

ROBERT McPHERSON AND
SHIRLEY J. McPHERSON
ORIG. 106.28 ACRES
VOL. 403, PG. 193



LEGEND

- 5/8 INCH IRON ROD SET
- 5/8 INCH IRON ROD FOUND
- ⊗ 3/4 INCH IRON ROD FOUND
- ⊠ ANGLE IRON POST FOUND
- ⊙ MAG NAIL SET
- ⊗ RAILROAD SPIKE FOUND
- ⊠ STONE FOUND

SURVEY OF TWO TRACTS OUT
OF THE OPALINE WATKINS
19.009 ACRE TRACT
OFFICIAL RECORD 412, PAGE 105
SECTION 7, TOWN 2, RANGE 15
HARRISON TOWNSHIP
LOGAN COUNTY, OHIO

TOWNSHIP ROAD 218

711
12/6

SURVEYED BY:

JEFFREY I. LEE
PROFESSIONAL SURVEYOR 6359
NOVEMBER 19, 1999

COPYRIGHT 1999 BY:
LEE SURVEYING & MAPPING CO., INC.
117 North Madriver Street
BELLEFONTAINE, OHIO 43311
(937) 593-7335

D 364 WATKINS

L-1909-2



ORIGINAL STAMP IN GREEN

2 WORKING DAYS
BEFORE YOU DIG
CALL TOLL FREE 800-362-2764
OHIO UTILITIES PROTECTION SERVICE.

1617 5P

REC'D 6-11-01 SWM OK ✓

Lee Surveying and Mapping Co., Inc.

Land Surveys • Topography • Subdivisions • Construction Layout

117 N. Madriver St.
Bellefontaine OH 43311



Phone: (937) 593-7335
Fax: (937) 593-7444

RITTER 1.062 ACRE TRACT

Lying in Section 7, Town 2, Range 15, Harrison Township, Logan County, Ohio.

Being out of the Robert C. Ritter 1.581 acre tract and the 11.154 acre tract as deeded and described in Official Record 435, Page 965, Tract II and Tract I of the Logan County Records of Deeds and being more particularly described as follows:

Beginning at a stone found at the southeast corner of Section 7 and on the center-line of Township Road 218.

THENCE, with the south line of Section 7 and the center-line of Township Road 218, N 84°-23'-50" W a distance of 1075.84 feet to a point on the center-line of County Highway 130.

THENCE, with the center-line of County Highway 130 (60 feet wide), N 36°-04'-00" W, a distance of 782.25 feet to a MAG nail set at THE TRUE POINT OF BEGINNING.

THENCE, S 75°-20'-59" W, a distance of 346.26 feet to a 5/8 inch iron rod set, passing a 5/8 inch iron rod set at 32.22 feet.

THENCE, N 36°-04'-00" W, a distance of 80.27 feet to a 5/8 inch iron rod set.

THENCE, N 53°-56'-00" E, a distance of 322.35 feet to a MAG nail set on the center-line of County Highway 130, passing a 5/8 inch iron rod set at 292.35 feet.

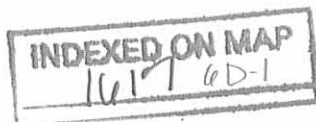
THENCE, with the center-line of County Highway 130, S 36°-04'-00" E, a distance of 206.70 feet to the point of beginning, passing a railroad spike found at 59.21 feet.

Containing 1.062 acre of which 0.138 acre is within the highway right-of-way.

The basis for bearings is the center-line of County Highway 130 being N 36°-04'-00" W, and all other bearings are from angles and distances measured in a field survey by Lee Surveying and Mapping Co., Inc. on April 28, 2001.

Description prepared by:


Jeffrey I. Lee
Professional Surveyor 6359
May 11, 2001



RECID 60-11-01 SWM OK ✓

Lee Surveying and Mapping Co., Inc.

Land Surveys • Topography • Subdivisions • Construction Layout

117 N. Madriver St.
Bellefontaine OH 43311



Phone: (937) 593-7335
Fax: (937) 593-7444

RITTER 1.023 ACRE TRACT

Lying in Section 7, Town 2, Range 15, Harrison Township, Logan County, Ohio.

Being out of the Robert C. Ritter 1.581 acre tract and the 11.154 acre tract as deeded and described in Official Record 435, Page 965, Tract II and Tract I of the Logan County Records of Deeds and being more particularly described as follows:

Beginning at a stone found at the southeast corner of Section 7 and on the center-line of Township Road 218.

THENCE, with the south line of Section 7 and the center-line of Township Road 218, N 84°-23'-50" W a distance of 1075.84 feet to a point on the center-line of County Highway 130.

THENCE, with the center-line of County Highway 130 (60 feet wide), N 36°-04'-00" W, a distance of 632.25 feet to a railroad spike found at THE TRUE POINT OF BEGINNING.

THENCE, with the north lines of the James and Bonnie Staley 7.841 acre tract (O.R. 440, Pg. 903) the following two (2) courses:

S 78°-50'-55" W, a distance of 338.89 feet to a 5/8 inch iron rod found, passing a railroad spike found at 33.08 feet.

S 85°-15'-00" W, a distance of 17.56 feet to a 5/8 inch iron rod set.

THENCE, N 36°-04'-00" W, a distance of 124.54 feet to a 5/8 inch iron rod set.

THENCE, N 75°-20'-59" E, a distance of 346.26 feet to a MAG nail set on the center-line of County Highway 130, passing a 5/8 inch iron rod set at 314.04 feet.

THENCE, with the center-line of County Highway 130, S 36°-04'-00" E, a distance of 150.00 feet to the point of beginning.

Containing 1.023 acre of which 0.103 acre is within the highway right-of-way.

The basis for bearings is the center-line of County Highway 130 being N 36°-04'-00" W, and all other bearings are from angles and distances measured in a field survey by Lee Surveying and Mapping Co., Inc. on April 28, 2001.

Description prepared by:

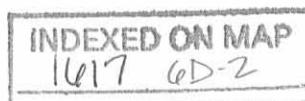
A handwritten signature in black ink, appearing to read 'Jeffrey I. Lee', is written over the typed name and title.

Jeffrey I. Lee
Professional Surveyor 6359
May 11, 2001

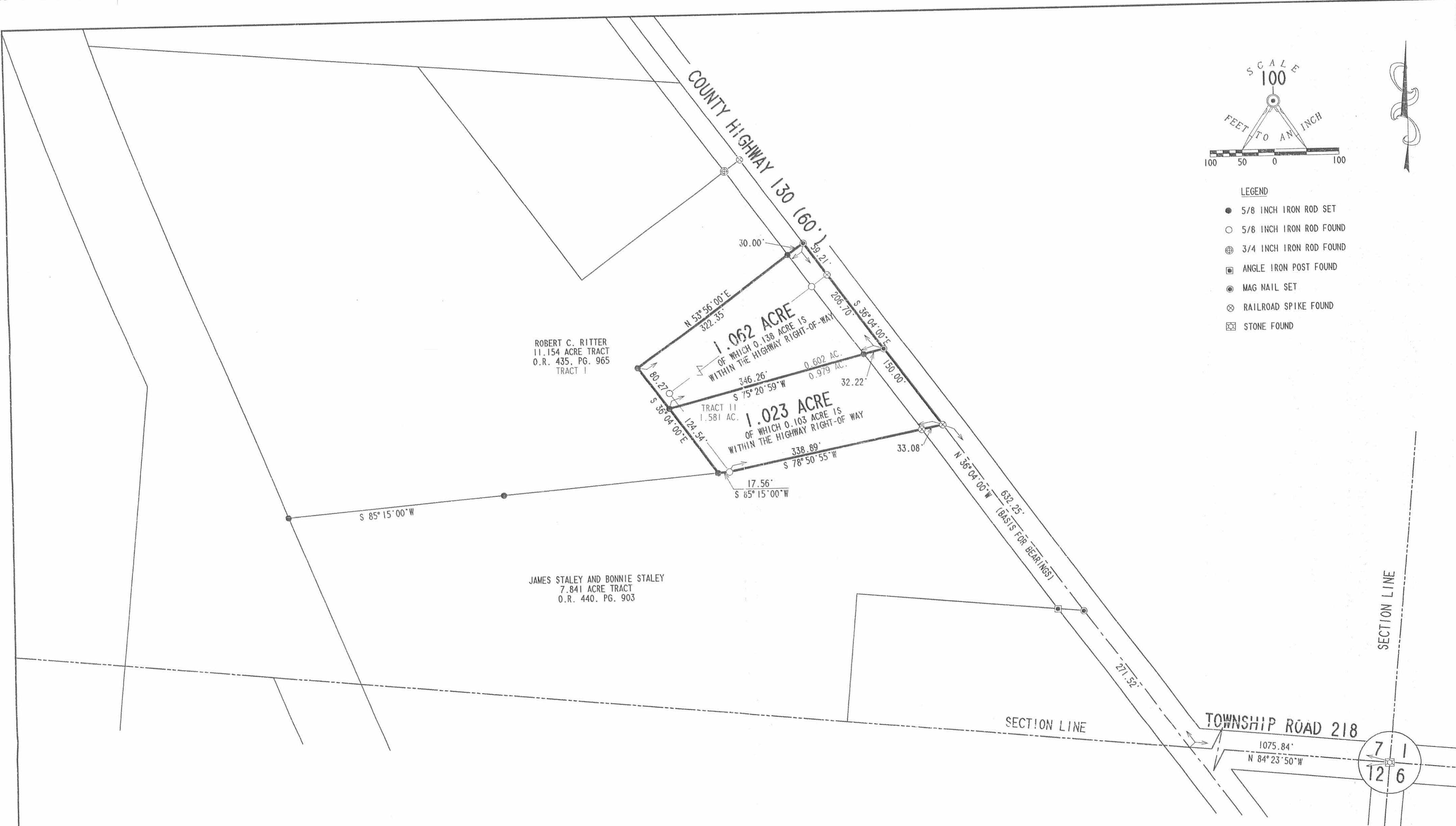


ORIGINAL STAMP IN GREEN

L-1909



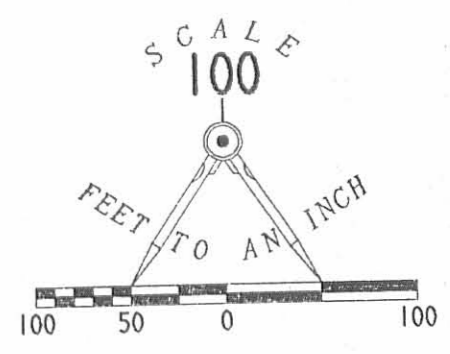
REC'D 6-11-01 SWM OKV



ROBERT C. RITTER
 11.154 ACRE TRACT
 O.R. 435, PG. 965
 TRACT I

JAMES STALEY AND BONNIE STALEY
 7.841 ACRE TRACT
 O.R. 440, PG. 903

BOUNDARY SURVEY OF TWO TRACTS
 BEING OUT OF THE ROBERT C. RITTER
 1.581 ACRE TRACT AND
 THE 11.154 ACRE TRACT
 OFFICIAL RECORD 435, PAGE 965
 TRACT II AND TRACT I
 SECTION 7, TOWN 2, RANGE 15
 HARRISON TOWNSHIP
 LOGAN COUNTY, OHIO



- LEGEND
- 5/8 INCH IRON ROD SET
 - 5/8 INCH IRON ROD FOUND
 - ⊕ 3/4 INCH IRON ROD FOUND
 - ⊠ ANGLE IRON POST FOUND
 - ⊙ MAG NAIL SET
 - ⊗ RAILROAD SPIKE FOUND
 - ⊞ STONE FOUND



SURVEYED BY:
 JEFFREY L. LEE
 PROFESSIONAL SURVEYOR 6359
 APRIL 28, 2001

COPYRIGHT 2001 BY:
 LEE SURVEYING & MAPPING CO., INC.
 117 North Madison Street
 BELLEFONTAINE, OHIO 43311
 (937) 593-7335

2 WORKING DAYS
BEFORE YOU DIG
 CALL TOLL FREE 800-362-2764
 OHIO UTILITIES PROTECTION SERVICE.

INDEXED ON MAP
 1617 GP

D-398 RITTER L-1909-2
 WAKINS.DAT

McPherson Survey (24.59 acres)

The following described land in Section 7, Town 2, Range 15 of between the Miami Rivers Survey and being in Harrison Township, Logan County Ohio.

Beginning at a cross in center of concrete pavement of S.H. 130 (Route 32) and being in the South line of Section 7; thence with the center of S.H. 130 N.36° 04' W. 1295 feet; thence N.85° 04' W. 917 feet to the East right-of-way fence of C.C.C. & St. L. R.R.; thence with said R/W fence S.19° 49' E. 200 feet; S.21° 49' E. 200 feet; S.22° 13' E. 685 feet to a jog in said R.W. fence 10 feet West of J.L. McCormick's S.W. corner; thence with the South line of Section 7 and said McCormick's North line S.84° 43' E. 1281 feet to place of beginning said tract containing 24.59 acres more or less and being the same tract as surveyed Oct. 1934 as shown in Logan County Surveyor's Book 521 Page 62.

INDEXED

1617

70-1

45

McPherson Survey (10.93 acres)

The following described land in Section 7,
Town 2, Range 15 of between The Miami River's Survey and being
in Harrison Township, Logan County Ohio.

Beginning at an iron in center of County Road
No. 91 known as Lewistown and Flat Branch Pike and in the center
of S.H. 130 (Route 32) at P.I. Station 109+86.5 of said S.H. 130
as shown in Logan County Records L-27 Page 2; thence with center
of Road No. 91 N.62° 38' W. 870 feet to E. Right-of-way line of
C.C.C. & St. L. R.R.; thence with said R/W fence S.11°51' E.
157 feet; S.13° 09' E. 271 feet S.15° 29' E. 200 feet; S.17° 29'E.
194½ feet; thence S.85° 04' E. 917 feet to center of S.H. 130
(Route 32); thence with center of S.H. 130 N.36° 04' W. 587 feet
to place of beginning, said tract containing 10.93 acres more or
less and being the same tract as surveyed Oct. 1934 as shown in
Logan County Surveyor's Book 521 Page 62.

INDEXED ON MAP

1617

70-2

44

1934

McPherson Survey (51.51 acres)

The following described land in Section 7 Town 2, Range 15 of between the Miami Rivers Survey and being in Harrison Township, Logan County Ohio/

Beginning at a stone and brick at S.E. corner of Section 7 at one of E.J. Boettcher's S.W. corners in the center of Road No. 218; thence with the center of Road No. 218 and the South line of Section 7 N.84° 11' W. 1082 feet to a cross in center of S.H. 130 (Route 32) thence with center of said S.H. 130 N.36° 04' W. 1780 feet to a cross in concrete at S.W. corner of A.Keller land; thence with South line of said Keller land S.85° 29' E. 2220 feet to a post, the last described line passing a stone at said Keller's S.E. corner at 1740 feet; thence with one of E.J. Boettcher's West lines S.3° 44' W. 1375 feet to place of beginning said tract containing 51.51 acres more or less and being the same tract as surveyed Oct. 1934 as shown in Logan County Surveyor's Book 521 Page 62.

INDEXED ON MAP

1617

7D-3

Logan McPherson - Road No. 218.

The following described land in Section 7, Town 2, Range 15, Harrison Township, Logan County Ohio, being a strip of land 5 feet wide off of the North side of the following described land :-

Beginning at a stone in the center of Road No. 218 said stone being at the S.E. corner of Section 7; thence West with the center of Road No. 218 and the South line of Section 7 1082 feet to the center of S.H. 130 (State Route 32); thence N.W. with center of said State Road 26.55 feet; thence East 1100 feet to the East side of Section 7; thence South 20 feet to the place of beginning, said 5 foot strip containing .12 of one acre more or less, and being the same tract as shown in Logan County Surveyor's Book 519, Page 57.

*I do not think
Truitts bought
this tract. It
was as road
on M c Camm
11-9-34*

INDEXED ON MAP

1617

8D

86

1935

McPherson Survey (2.00 acres)

The following described land in Section 7, Town 2, Range 15 of between the Miami Rivers Survey and being in Harrison Township, Logan County, Ohio.

Beginning at a cross in center of concrete pavement of S.H. 130 (Route 32) and being in the South line of Section 7, thence with the South line of Section 7 and in J.L. McCormick's North line N. 84° 43' W. 526.8 feet to a stake; thence N.5° 17'E. 198.2 feet to a stake; thence S.84° 43' E. 352.4 feet to center of S.H. 130; thence with center of S.H. 130 S.36° 04' E. 264.0 feet to the place of beginning, said tract containing two(2.00) acres more or less and being the same tract as surveyed April 3, 1935 and shown in Logan County Surveyor's Book No. 521 Page 80.

INDEXED ON MAP

1617

90 29

2-5-15

Lee Surveying and Mapping Co., Inc.



Land Surveys • Topography • Subdivisions • Construction Layout

117 N. Madriver St.
Bellefontaine OH 43311



Phone: (937) 593-7335
Fax: (937) 593-7444
surveys@lsminc.us

RITTER 4.437 ACRES

Lying in Section 7, Town 2, Range 15, Harrison Township, Logan County, Ohio.

Being out of the Robert C. Ritter 11.154 acre tract as deeded and described in Official Record 435, Page 965, Tract I of the Logan County Records of Deeds and being more particularly described as follows:

Commencing at a stone found at the southeast corner of Section 7 on the center-line of Township Road 218 (60 feet wide).

THENCE, with the south line of Section 7 and the center-line of Township Road 218, N 84°-56'-18"W, a distance of 1075.84 feet to a point on the intersection of Township Road 218 and County Highway 130.

THENCE, with the center-line of County Highway 130 (60 feet wide), N 36°-36'-28"W, a distance of 632.25 feet to a railroad spike found.

THENCE, with the south line of the Manuel Y. Sales and Norma V. Sales 1.023 acre tract (O.R. 743, Pg. 372, Tract I) and a north line of the James Staley and Bonnie Staley 7.841 acre tract (O.R. 440, Pg. 903, the following two courses:

S 77°-21'-53"W, a distance of 338.89 feet to a 5/8 inch iron rod found, passing a railroad spike found at 32.45 feet.

S 85°-15'-07"W, a distance of 17.46 feet to a 5/8 inch iron rod found at the TRUE POINT OF BEGINNING.

THENCE, with the north line of the said 7.841 acre tract, S 85°-15'-07"W, a distance of 667.32 feet to a 5/8 inch iron rod found.

THENCE, with the east line of the Robert McPherson and Shirley McPherson 10.234 acre tract (O.R. 241, Pg. 382) N 22°-10'-53"W, a distance of 458.95 feet to a 5/8 inch iron rod found.

THENCE, S 74°-07'-58"E, a distance of 746.35 feet to a 5/8 inch iron rod found.

Lee Surveying and Mapping Co., Inc.

Land Surveys • Topography • Subdivisions • Construction Layout

117 N. Madriver St.
Bellefontaine OH 43311



Phone: (937) 593-7335
Fax: (937) 593-7444
surveys@lsminc.us

THENCE, with the west lines of the Manuel Y. Sales and Norma V. Sales 1.062 acre tract and aforesaid 1.023 acre tract (O.R. 743, Pg. 372, Tract II and Tract I), S 36°-00'-09"E, a distance of 204.81 feet to the point of beginning, passing a 5/8 inch iron rod found at 80.23 feet.

Containing 4.437 acres.

This parcel is to be attached to an adjoining tract of land and is not to be used as a separate and independent parcel.

Property is subject to any and all previous easements and rights-of-way of record.

The basis for bearings is the center-line of County Highway 130, being N 36°-36'-28"W, and all other bearings are from angles and distances measured in a field survey by Lee Surveying and Mapping Co., Inc. on January 23, 2015.



Description prepared by:

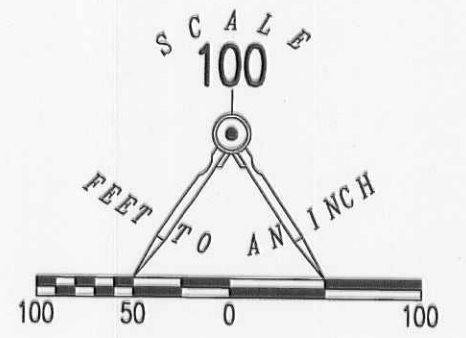
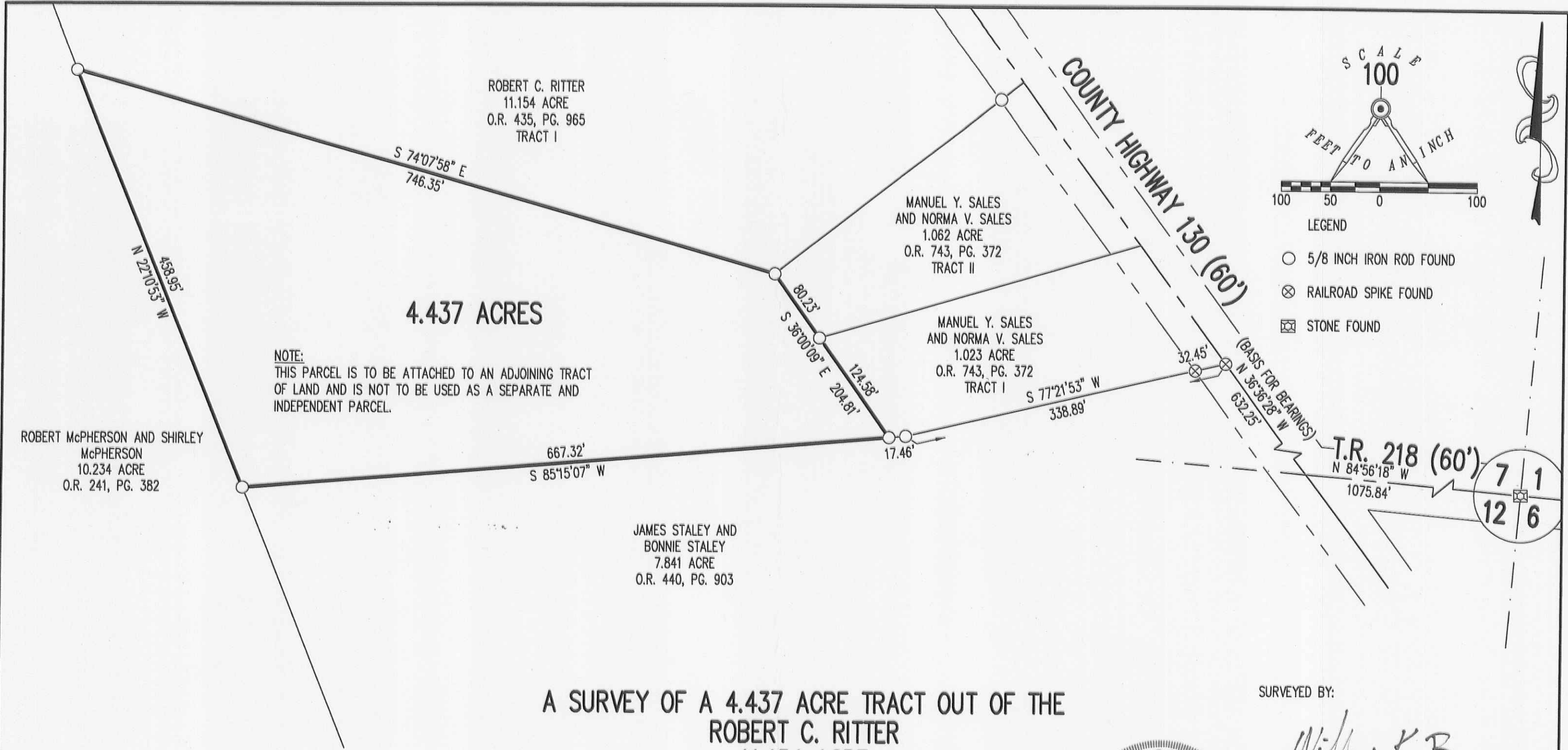
A handwritten signature in black ink that reads 'William K. Bruce'.

William K. Bruce
Professional Surveyor 7437
January 23, 2015

L-19090115

2-5-15

APPROVED



A SURVEY OF A 4.437 ACRE TRACT OUT OF THE
 ROBERT C. RITTER
 11.154 ACRE
 OFFICIAL RECORD 435, PAGE 965
 TRACT I
 SECTION 7, TOWN 2, RANGE 15
 HARRISON TOWNSHIP
 LOGAN COUNTY, OHIO

SURVEYED BY:
William K. Bruce
 WILLIAM K. BRUCE
 PROFESSIONAL SURVEYOR 7437
 JANUARY 23, 2015



COPYRIGHT 2015 BY:
 LEE SURVEYING & MAPPING CO., INC.
 117 North Madriver Street
 BELLEFONTAINE, OHIO 43311
 (937) 593-7335
 WWW.LSMINC.US
 surveys@lsminc.us

2 WORKING DAYS
BEFORE YOU DIG
 CALL TOLL FREE 800-362-2764
 OHIO UTILITIES PROTECTION SERVICE

INDEXED ON MAP
 1617 1DP

ADW D0115 19090115 L-1909-3

10-20-2020
APPROVED

SURVEY DESCRIPTION

**0.127 Acre
October 14, 2020**

The following described 0.127 acre tract is situated in the State of Ohio, County of Logan, Township of Harrison, and part of the southeast quarter of Section 7, Town 2, and Range 15, being part of Jamie Staley and Bonnie Staley's original 7.841 acre tract described in Official Record 440, page 903;

Beginning for reference at a railroad spike found at the intersection of the centerline of County Road 130 (66 feet wide) with the centerline of County Road 91 (60 feet wide) said railroad spike referenced as Point of Intersection Station 109+86.5 on County Road 130 Plan L-27A, sheet 2 of 6;

Thence South 35°41'00" East (assumed bearing) 1291.51 feet, following the centerline of County Road 130, to a magnetic nail found at the northeast corner of Joseph Clifford's 1.023 acre tract described in Official Record 1373, page 518, and at a southeast corner of the remainder said original 7.841 acre tract;

Thence South 79°15'09" West 295.95 feet, departing from the centerline of County Road 130 and following a south line of the remainder of said original 7.841 acre tract and the north line of said 1.023 acre tract, passing at 33.06 feet a 5/8 inch iron pin found with cap marked "LEE PS 6359", to a 5/8 inch iron pin found with cap marked "LEE PS 6359", said iron pin marking the *place of beginning*;

Thence *South 10°44'51" East 136.09 feet*, following an east line of the remainder of said original 7.841 acre tract and the west line of said 1.023 acre tract, to a 5/8 inch iron pin found;

Thence *South 79°15'09" West 40.64 feet*, entering the remainder of said original 7.841 acre tract, to an iron pin set;

Thence *North 10°44'51" West 136.09 feet*, continuing through said original 7.841 acre tract, to an iron pin set;

Thence *North 79°15'09" East 40.64 feet*, continuing through said original 7.841 acre tract, to the *place of beginning, containing 0.127 acre*, more or less, and being subject to all valid easements and restrictions of record.

The above described 0.127 acre tract has no road frontage and must be attached to the owner of said 1.023 acre tract.

The above description was prepared from a field survey made under the supervision of Paul R. Clapsaddle, Registered Surveyor #6140, during the month of October 2020. Bearings indicated herein are based on an assumed bearing with all others based on angles turned. Iron pins set are 5/8 inch by 30 inch reinforcing rods with caps marked "CLAPSADDLE RS 6140".

ATTEST:

Paul R. Clapsaddle

Paul R. Clapsaddle, R.S. 6140
19019 West Darby Road
Marysville, Ohio 43040
(937) 747-2599



INDEXED ON MAP
1617

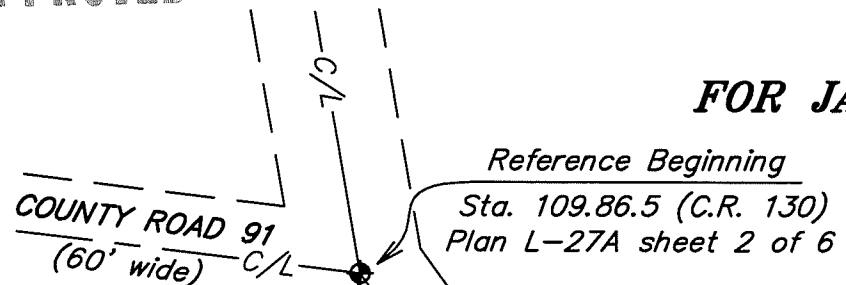
10-20-2020

APPROVED

PLAT OF SURVEY

FOR JAMES STALEY & JOSEPH CLIFFORD

STATE OF OHIO
LOGAN COUNTY
HARRISON TOWNSHIP
SECTION 7, TOWN 2, RANGE 15



NOTES:

Reference deeds are shown hereon

Bearings indicated hereon are based on an assumed meridian with all others based on angles turned

No new driveways are proposed

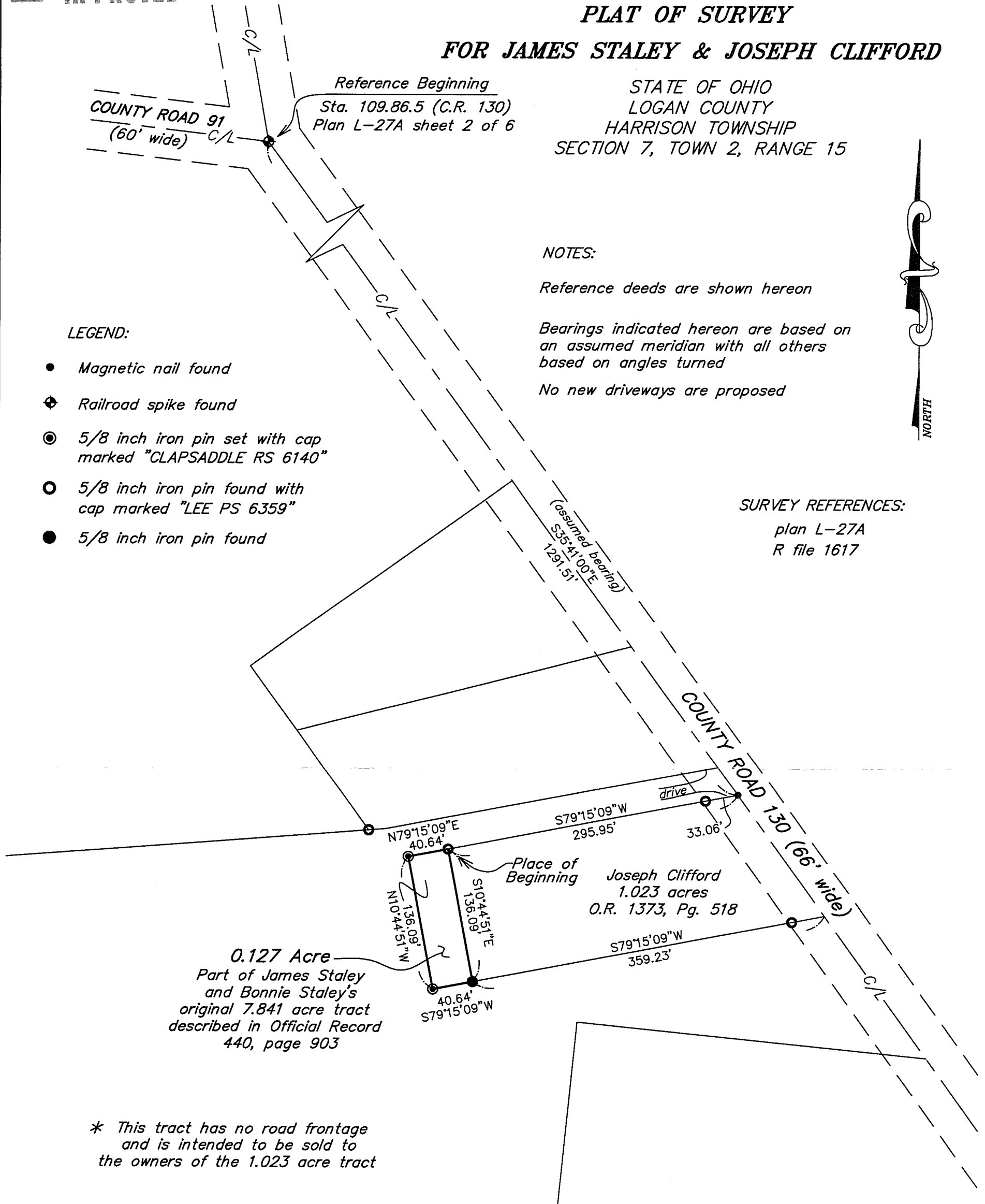


LEGEND:

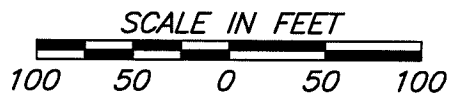
- Magnetic nail found
- ⊕ Railroad spike found
- ⊙ 5/8 inch iron pin set with cap marked "CLAPSADDLE RS 6140"
- 5/8 inch iron pin found with cap marked "LEE PS 6359"
- 5/8 inch iron pin found

SURVEY REFERENCES:

plan L-27A
R file 1617



* This tract has no road frontage and is intended to be sold to the owners of the 1.023 acre tract



Project: Staley920
Drawing: Staley920

Date: October 14, 2020
Scale: 1"=100'

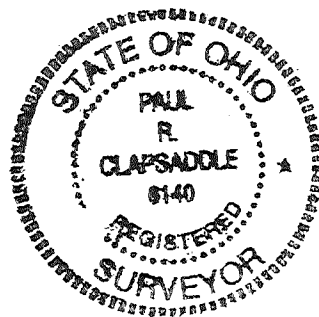
Paul R. Clapsaddle and Associates

REGISTERED ENGINEERS AND SURVEYORS

19019 WEST DARBY ROAD, MARYSVILLE OHIO 43040
(937) 747-2599

INDEXED ON MAP
1617

Paul R. Clapsaddle, P.E., P.S.



I hereby certify that this plat was prepared from a field survey made under my supervision and that monuments were placed as indicated hereon.

Paul R. Clapsaddle
Paul R. Clapsaddle, R.S. #6140

**APPROVED****SURVEY DESCRIPTION****2.082 Acre****February 21, 2024**

The following described 2.082 acre tract is situated in the State of Ohio, County of Logan, Township of Harrison, and part of the southeast quarter of Section 7, Town 2, and Range 15, being all of Manuel Y. and Norma V. Sales' 1.023 acre Tract I and 1.062 acre Tract II, both described in O.R. 743, Pg. 372, and said 2.082 acres being more particularly described as follows:

Beginning for reference at a railroad spike found at the intersection of the centerline of County Road 130 (66 R/W) with the centerline of County Road 91 (60 R/W) said railroad spike referenced as Point of Intersection Station 109+86.5 on County Road 130 Plan L-27A, sheet 2 of 6;

Thence South $35^{\circ}41'00''$ East 900.46 feet, following the centerline of County Road 130, to a magnetic nail found at the northeast corner of said 1.062 acre tract and at the southeast corner of William Andrew Skidmore and Savannah Y. Bryson's 6.213 acre tract described in O.R. 1341, Pg. 1, said magnetic nail marking the *place of beginning*;

Thence *South $35^{\circ}41'00''$ East 356.17 feet*, following the centerline of County Road 130 and the northeast line of said 1.062 acre tract, passing at 206.47 feet a magnetic nail found at the northeast corner of said 1.023 acre tract, thereafter following the northeast line of said 1.023 acre tract to a magnetic nail set at a northeast corner of Edward D. Peper, Jr's 6.818 acre Parcel I described in O.R. 1415, Pg. 3398;

Thence *South $79^{\circ}14'07''$ West 338.85 feet*, departing from the centerline of said Road and following a south line of said 1.023 acre tract and a north line of said 6.818 acre tract, passing at 33.08 feet a railroad spike found, to a 5/8 inch iron pin found with cap marked "LEE PS 6359";

Thence *South $85^{\circ}34'22''$ West 17.50 feet*, following a south line of said 1.023 acre tract and a north line of said 6.818 acre tract, to a 5/8 inch iron pin found with cap marked "LEE PS 6359" at a southeast corner of Edward D. Peper, Jr.'s 4.437 acre Parcel II described in O.R. 1415, Pg. 3398;

Thence *North $35^{\circ}38'43''$ West 204.75 feet*, following the northeast line of said 4.437 acre tract and the southwest line of said 1.023 acre tract, passing at 124.51 feet a 5/8 inch iron pin found with cap marked "LEE PS 6359" at the southwest corner of said 1.062 acre tract, thereafter following the southwest line of said 1.062 acre tract, to a 5/8 inch iron pin found with cap marked "LEE PS 6359" at an angle point in the south line of said 6.213 acre tract;

Thence *North $54^{\circ}23'29''$ East 322.13 feet*, following the northwest line of said 1.062 acre tract and the southeast line of said 6.213 acre tract, passing at 292.56 feet a 5/8 inch iron pin found, to the *place of beginning, containing 2.082 acres*, more or less, and being subject to all valid easements and restrictions of record.

Of the above described 2.082 acre tract, 0.264 acre is within the right of way of County Road 130.

The above description was prepared from a field survey made under the supervision of Paul R. Clapsaddle, Registered Surveyor 6140, during the month of February 2024. Bearings indicated herein are based on State Plane Coordinate North Zone, NAD 83 and GPS observations.

ATTEST:

Paul R. Clapsaddle, R.S. 6140
19019 West Darby Road
Marysville, Ohio 43040
(937) 248-1065



INDEXED ON MAP

1617

APPROVED

PLAT OF SURVEY FOR MANUEL AND NORMA SALES

STATE OF OHIO
LOGAN COUNTY
HARRISON TOWNSHIP
SECTION 7, TOWN 2, RANGE 15



Reference Beginning
Sta. 109+86.5 (C.R. 130)
Plan L-27A sheet 2 of 6

NOTES:

Reference deeds are shown hereon

Bearings indicated hereon are based on
State Plane Coordinates North Zone,
NAD 83 and GPS observations.

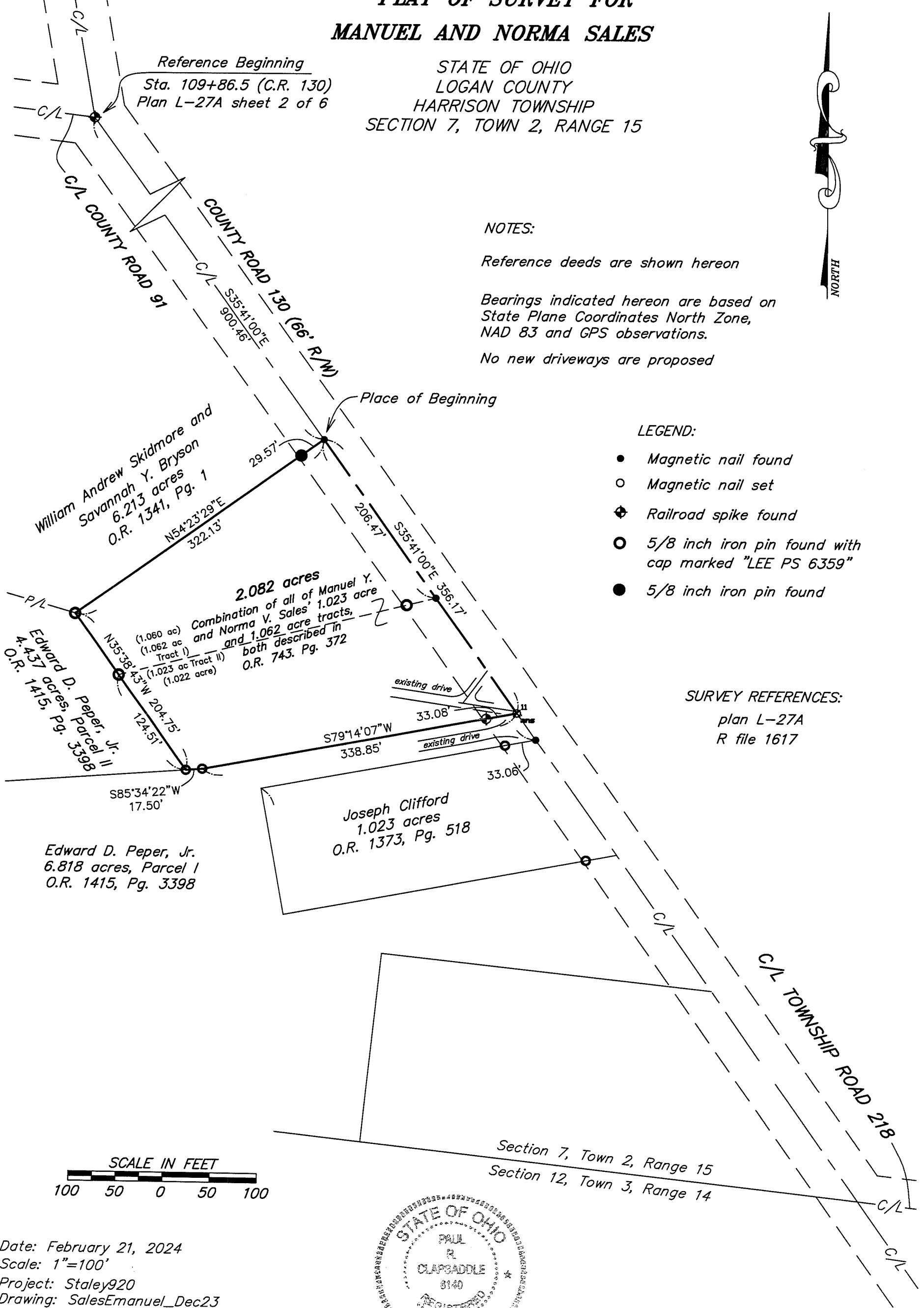
No new driveways are proposed

LEGEND:

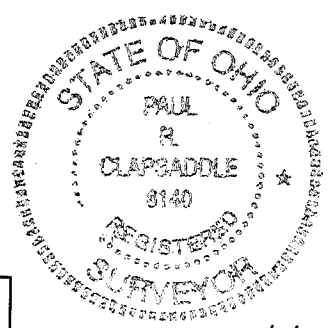
- Magnetic nail found
- Magnetic nail set
- ◆ Railroad spike found
- 5/8 inch iron pin found with cap marked "LEE PS 6359"
- 5/8 inch iron pin found

SURVEY REFERENCES:

plan L-27A
R file 1617



Date: February 21, 2024
 Scale: 1"=100'
 Project: Staley920
 Drawing: SalesEmanuel_Dec23



**Paul R. Clapsaddle
and Associates**
 REGISTERED ENGINEERS AND SURVEYORS
 19019 WEST DARBY ROAD, MARYSVILLE OHIO 43040
 (937) 747-2599
 Paul R. Clapsaddle, P.E., P.S.

I hereby certify that this plat was prepared from
 a field survey made under my supervision and that
 monuments were placed as indicated hereon.

Paul R. Clapsaddle
 Paul R. Clapsaddle, R.S. 6140

INDEXED ON MAP
 1617