

Road. 13

50 & (75') McColly Pike

Free Pike record No 4 Page 152

1875

(75' - sta 48+98 To 51+62)

60' Sta. 444+13 To 483+99 Commissioners

Journal No. 5 Page 183 (1837)

staked for 60' R/W. - 11/7/39

stakes for 50' Road

(13+00) Monuments (Hubs set)

(10+00) Monuments - (Hubs set)

(6+00) Monuments (Hubs set)

(1+50) Monuments Hubs set

Em bankment 13+00 to 15+00

1727

INDEXED ON MAP

Re staked
11/7/39
E. Gore
G. W. Lee
J. Buckner
M. V. ...
R. Reed



July-8-1936
Clear-Dry-Warm
F. Wing 17
J.M.
T.3 R.14
J. Loc McCormick

Road 32
See Book 615 Page 68 A
540-20' W

C.R. Shaffer

sec. 6

Notes: Bearings
shown in Red
are established
True Bearings

store
12+63.5
02-14' Left
N 41-24' E

Road. 32

00-13' Left
00-26' Left

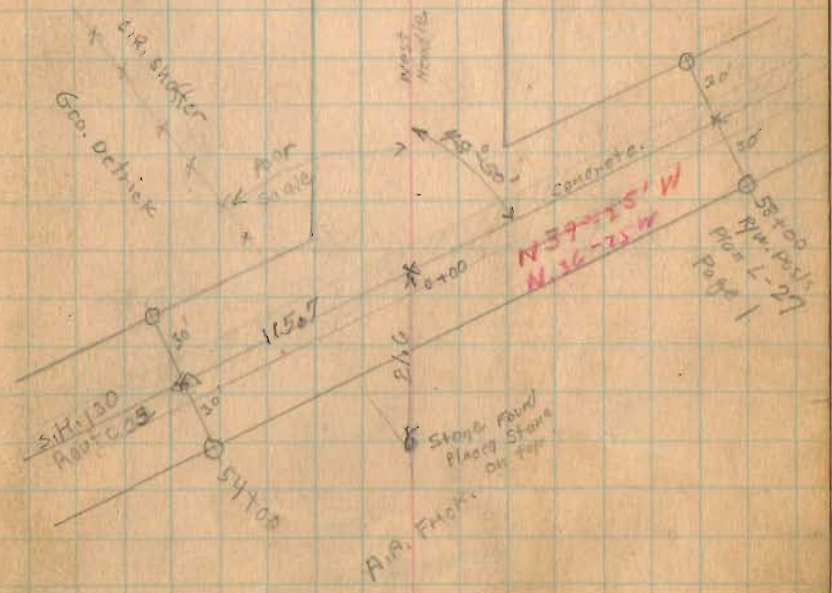
20" PAK

T.3 R.14

Major's Field



Bridge 40+33-16.9



11/7/39
Restaking

Road 13

(24+00) Monuments (Hubs Set)

(22+00) Monuments - (Hubs Set)

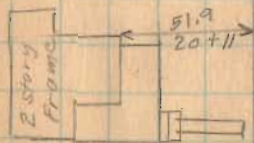
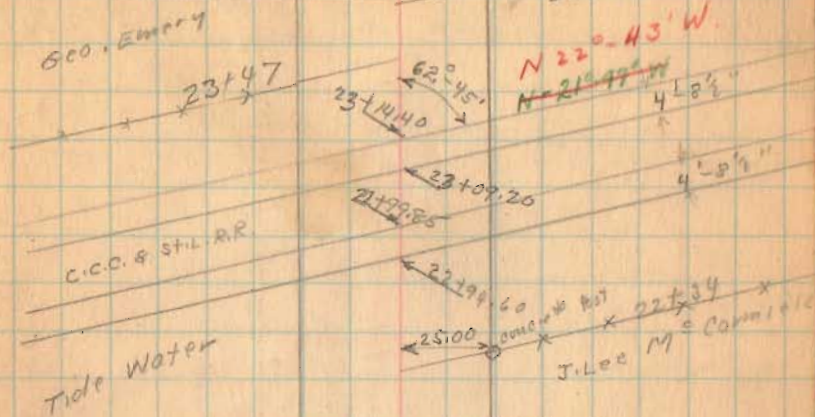
(1727)

(18+00)

INDEXED ON MAP
Monuments - (Hubs Set)

7-8-36

Harry Costin 39



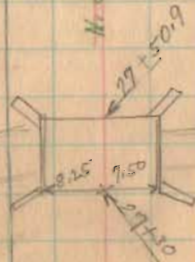
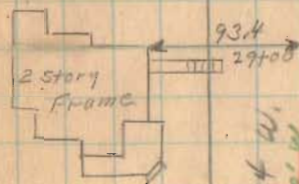
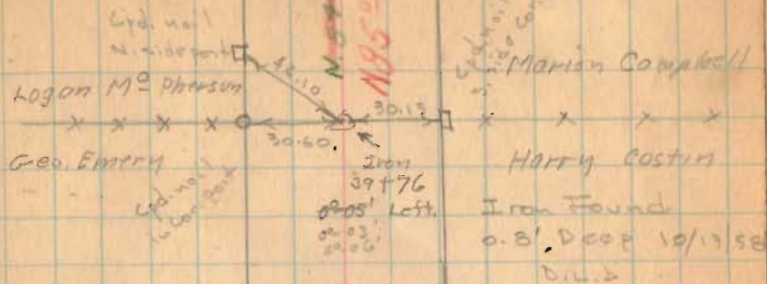
N 65° 18' W

11/7/39
Restored

Road 13

40

7-8-34



39+00 Monuments (Hubs set)

53+00 Monuments (Hubs set)

28+00 Monuments (Hubs set)

1727

INDEXED ON MAP

Road 13

11/2/27
K. L. ...
G. ...
J. ...
M. ...
R. ...

67+00 Monuments (Hubs set)

66+00 Monuments (Hubs set)

61+00 Monuments (Hubs set)

56+00 Monuments (Hubs set)

51+62 25' To E 37 1/2' To E
Monuments at 30' from E (Hubs set)
" 37.5' " " " " " "

48+98 25' To E 37 1/2' To E
Monuments at 30' from E (Hubs set)
" 37.5' " " " " " "

46+00 Monuments (Hubs set)

41+00 Monuments (1727) (Hubs set)

INDEXED ON MAP

7-2-56

41

Sec. 18
A. Mar 14

T. 3 R. 14

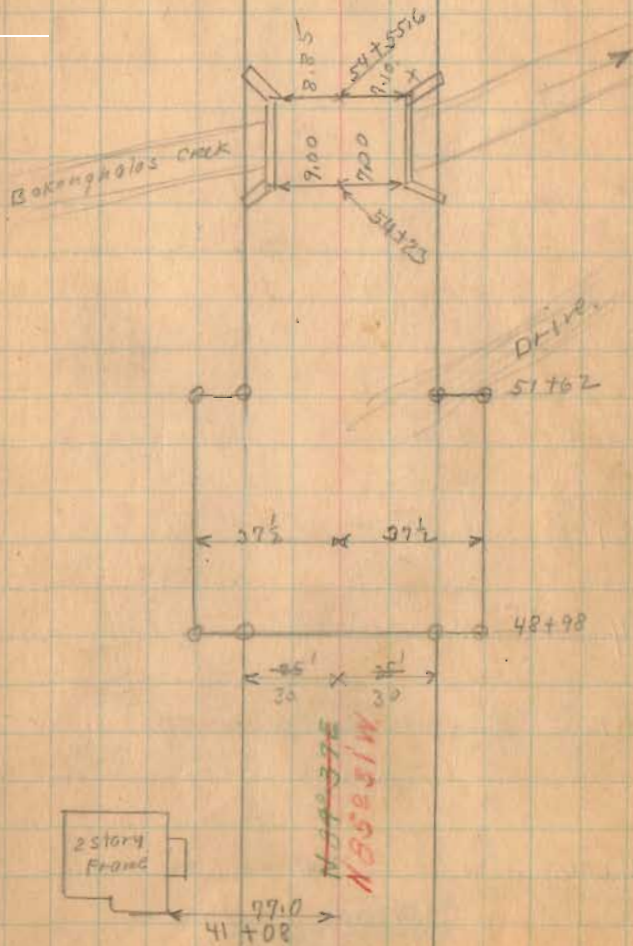
James Hill

Log on MR Pearson

Stone Found - Monitor Campbell
66+66
of 34'
Right

Sec. 12

T. 3 R. 14



11/8/39 Restaked

E. Cory
G. Wilcox
J. Inskeep
M. Jants
R. Reed

Road 13

60' wide

95+00 Monuments (Hubs set)

90+00 Monuments (Hubs set)

84+00 Monuments (Hubs set)

78+00 Monuments (Hubs set)

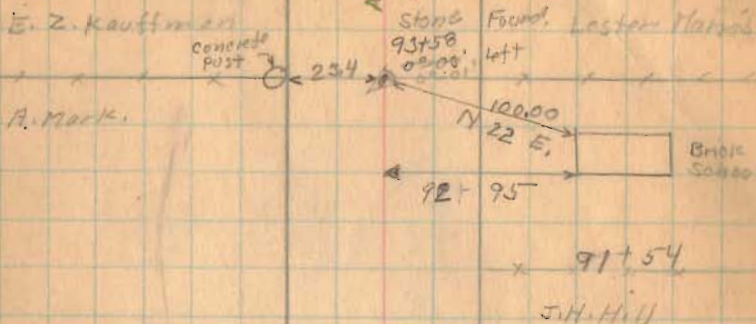
74+00 Monuments (Hubs set)

INDEXED MAP
INDEXED ON MAP
(1727)

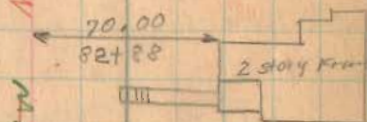
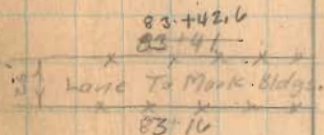
✓

July-9-1936
Warm Yes
Clear
F. Wright
G. Wilcox
J. Montgomery

42



90+74.0
R.P. Spike
No angle



N. 50° 00' 00\"/>

N. 89° 57' 11\"/>

N. 80° 00' 00\"/>

80+42
Land To Royal Hill
80+04

Road 13

11-9-39 Restaked

B. Wiggins
C. Kopper
B. Fiske
M. Jones
R. Reed

120+00 Monuments (Hub set)

115+00 Monuments (Hub set)

110+00 Monuments (Hub set)

106+00 Monuments (Hub set)

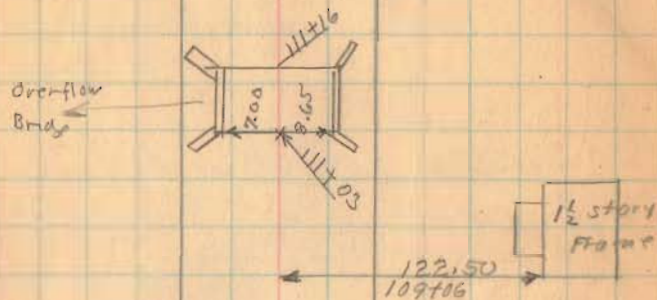
101+00 Monuments (Hub set)

1727

INDEXED ON MAP

7-9-36

43



~~N 84° 06' E~~
N 84° 55' W

B.O. Downing

191+88

Lester Harris



11-7-39 clear
not cold

Road 13

131+50 Monuments (Hub set)

126+00 Monuments (Hub set)

121+00 Monuments (Hub set)

1727

INDEXED ON MAP

7-7-36 44

7
S 4°-20' W
S 20° W Road 46
see Book 587 Page 14
L
Road 235
Placed Iron
130+95
No. Angle
Fd 12/19/65

sec. 24

T. 3 R. 14

John Lynn
R
Huro

Iron
120+48
1° 10' 4" off
15' 07" W

John Lynn

E. Z. Kauffman

Road No. 46

30" Rod
5600
28130
S. 32° W. Fd 12/19/65
Cement
Post

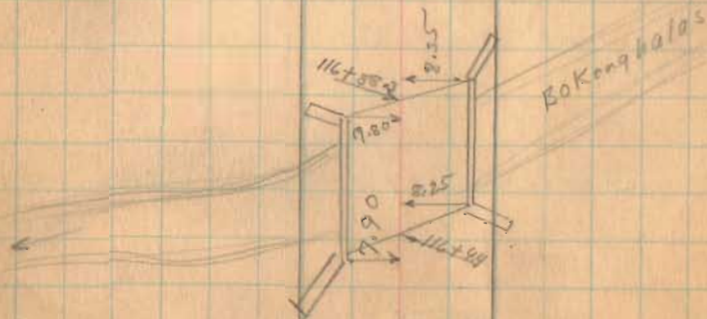
B. O. Downing

sec. 18

T. 3 R. 14

N 88°-06' W
N 89°-38' W

→ 2



11-9-39

Wilgus
Keyser
Restaked Inskip
Jones

Road 13

153+00 Monuments (Hubs set)

147+50 Monuments (Hubs set)

149+00 Monuments (Hubs set)

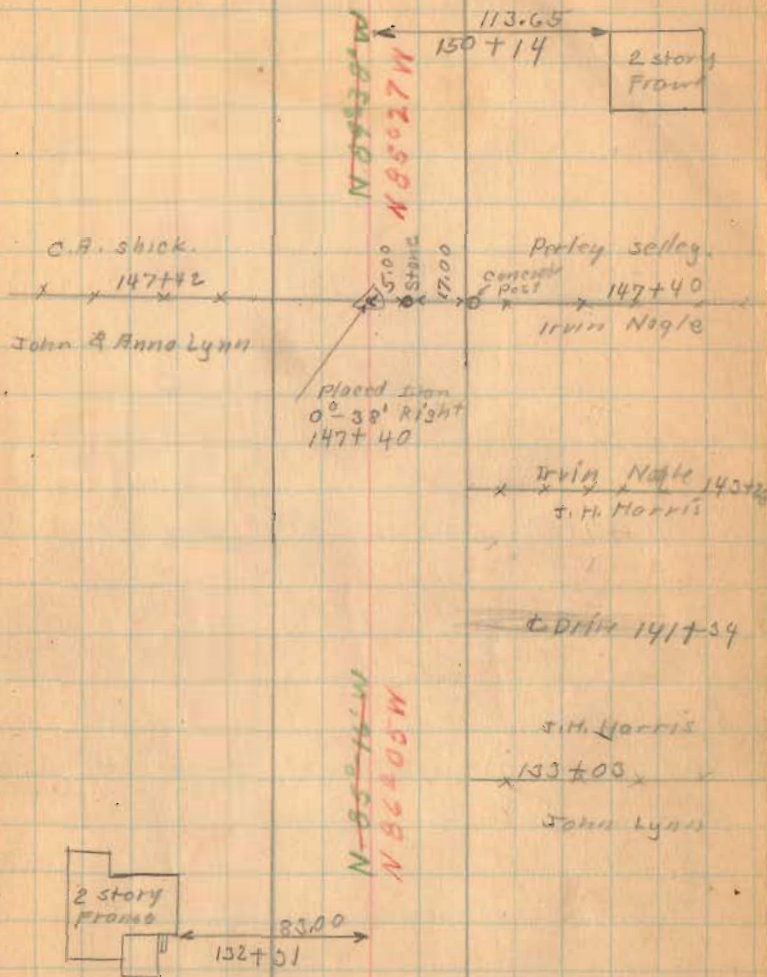
141+00 Monuments (Hubs set)

136+00 Monuments (Hubs set)

INDEXED ON MAP
1727

7-9-36

45



11-10-39
very Windy

G.W. Hubs
C. Keyser
J. Insteep
M. Jones

Road 13

7-9-36

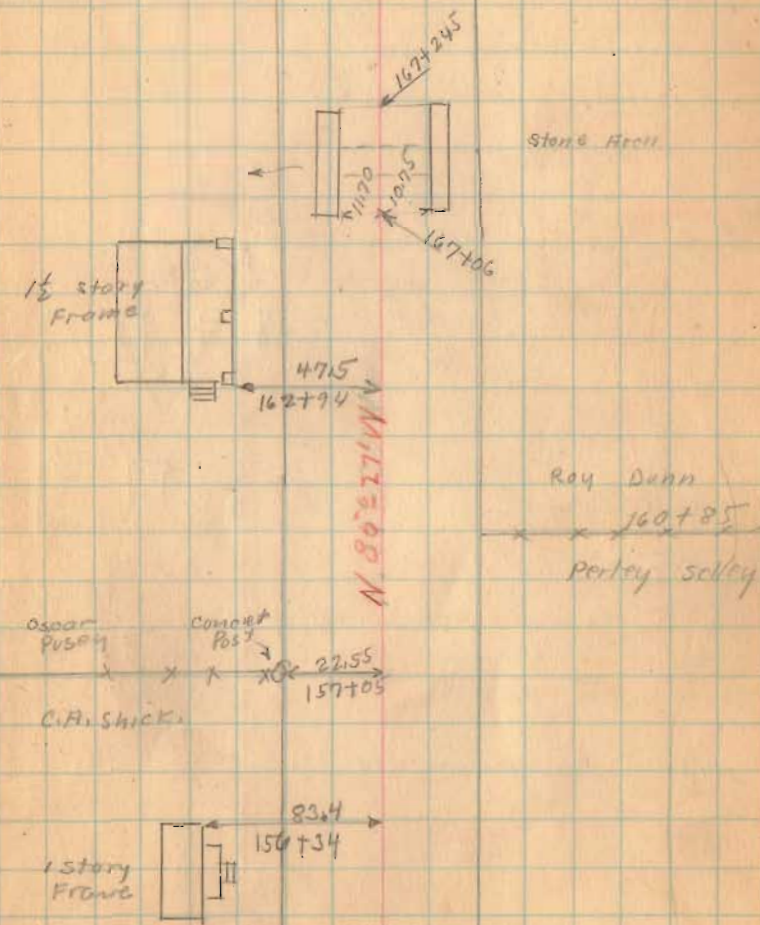
46

(167+00) Monuments (Hubs set)

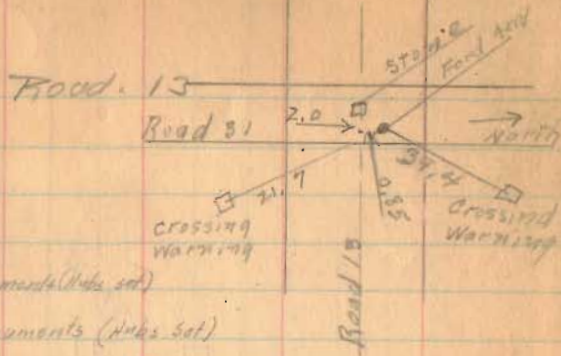
(162+00) Monuments (Hubs set)

(157+00) Monuments (Hubs set)

(1927)
INDEXED ON MAP

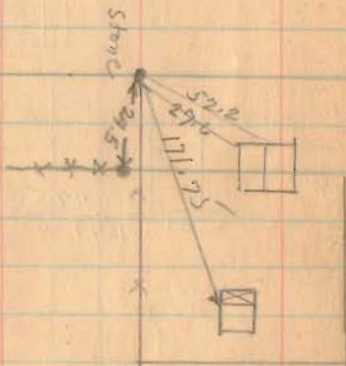


July - 10 - 1936
 Clark - Mot.
 F. Wright
 J. Montgomery
 G. Wilgus



186+00 Monuments (Hubb set)

180+00 Monuments (Hubb set)



175+00 Monuments (Hubb set)

Monument - N. side road at 90° set by eye.

173+00 Monuments (Hubb set)

Sargant
 Oscar Pusoy

1727

INDEXED ON MAP

Sec. 30

Robert Bradley

T. 3 R. 14

Mary E. Moore

174+48

Road 31
 S 40-19' W

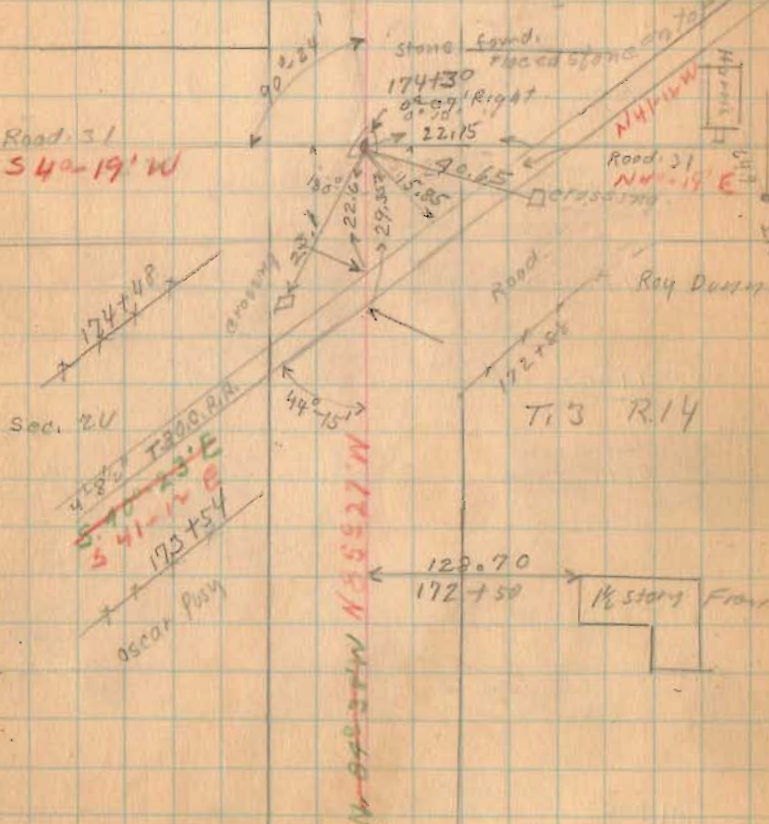
Sec. 20

4182 T 300.0 R.A.
 S 71-23' E
 341-12' E
 170+54

Oscar Pusoy

N 65-17' W

N 44-15' W N 55-27' W



T. 3 R. 14

1/2 story frame

Road 13

11/14/39
Rechecked - 60'
E.K. Coon
G.W. Wilgus
H.E. Jones
C.B. Kesser
R. Root

(214+00) Monuments - (Hubs Set)

(209+00) Found 5-9-53
Monuments (Hubs set)

(204+00) Found 5-9-53
Monuments (Hubs set)

(201+00) Found 5-9-53
Monument - (Hubs Set)

(200+00) Monuments - (Hubs Set)

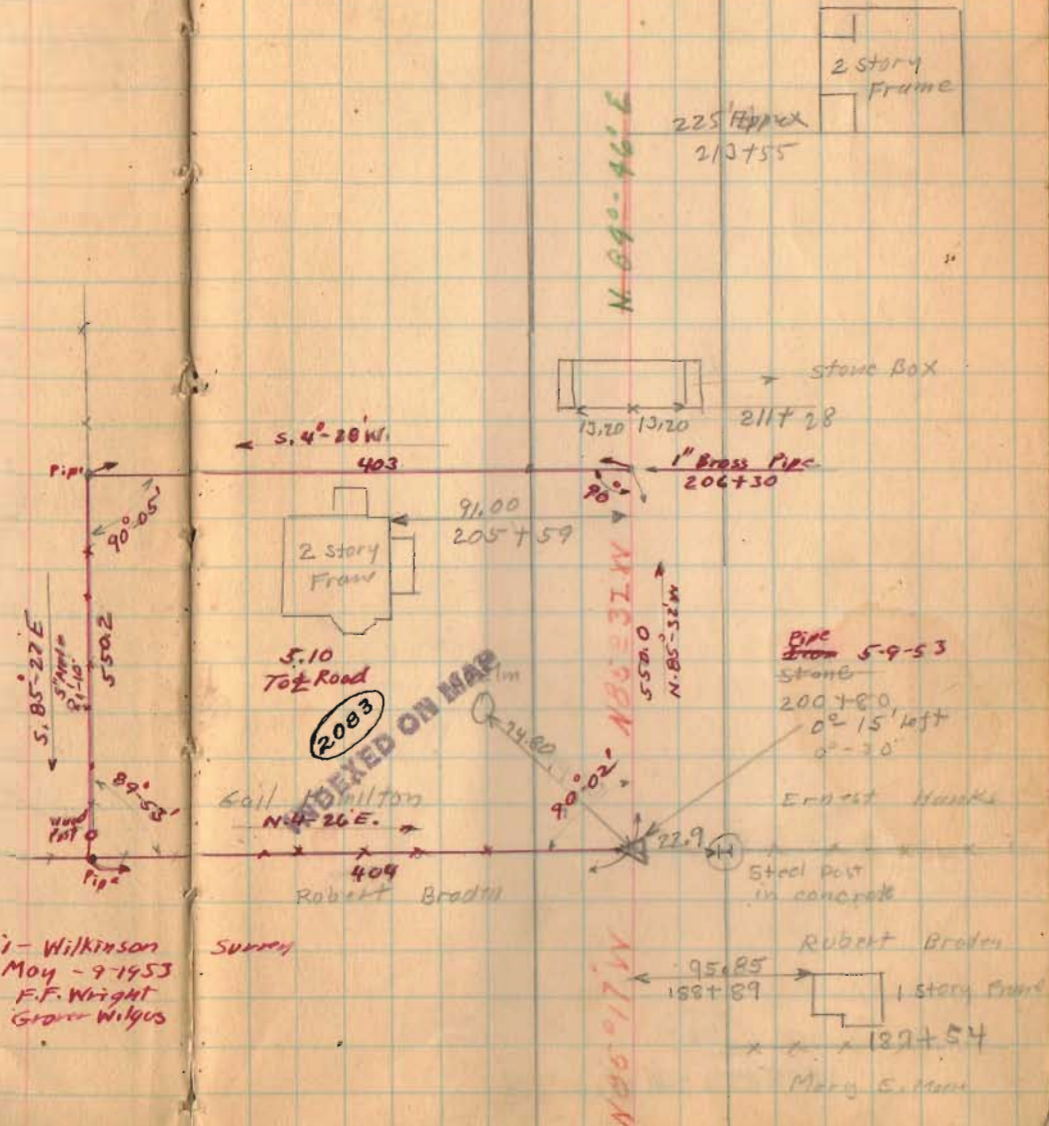
(195+00) Monuments (Hubs Set)

(191+00) Monuments (Hubs set)

(1727)
INDEXED ON MAP

Anni - Wilkinson
May - 9-1953
F.F. Wright
G.W. Wilgus

Surrey



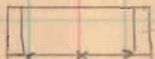
7-10-34

2 story Frame

225 Appex
2/3+55

N 89°-46' E

stone Box



211+28

S. 4°-28' W.
403

1" Brass Pipe
206+30



91.00
205+59

(2083)
INDEXED ON MAP

5.10
To ± Road

Pipe from 5-9-53
stone

200+80
0°-15' left
0°-30'

Ernest Hawks

Call Milton
N 4°-26' E.



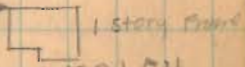
22.9

Steel Post
in concrete

404
Robert Braden

Robert Braden

95.85
182+89



182+54

Mary E. Mann

N 85°-17' W

Road 13

(219+00) Monuments (Hubs Set)

(1722)

INDEXED ON MAP

9-10-36

49

✓
Z x 217+50 x
Lane
Z 217+34 x

N 77° 49' W
~~N 77° 49' W~~
N 85° 31' W

Lawrence Milligan

Lane

217+67

Ernest Hanks

11/14/39
 Restaked 60'
 Cox
 Wilgus
 Keyser
 Jones
 Reed.

Road. 13

246+00 Monuments (Hubs Set)

241+50 Monuments (Hubs Set)

240+75 Monuments (Hubs Set)

237+00 Monuments (Hubs Set)

233+00 Monuments (Hubs Set)

228+00 Monuments (Hubs Set)

227+00 Monuments (Hubs Set)

224+00 Monuments (Hubs Set)

1927

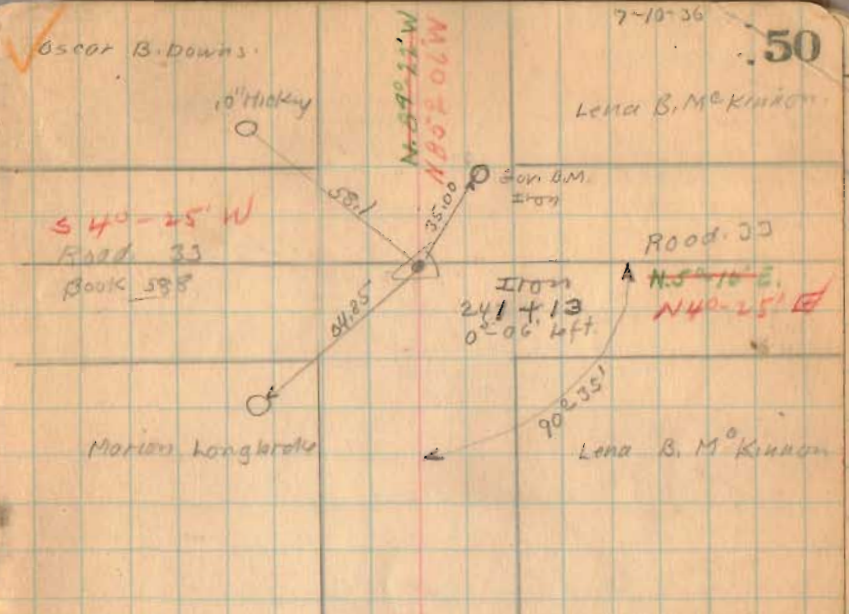
INDEXED ON MAP

7-10-36

50

Oscar B. Downs.

Lena B. McKinnon



Washington
 sec. 30

Township 2
 T. 3 R. 14

Marion Longstrede

Iron 227+60
 0°-32' Right
 Lena B. McKinnon

x x x
 Gail Hamilton
 sec. 30

25.00
 N 55° E
 56" Elm
 Lawrence Milligan
 T. 3 R. 14

Harrison

Township

N 85° 20' W
 N 50° 16' E
 N 85° 32' W

Food. 13

269+00 Monuments (Hubs Set)

265+00 Monuments (Hubs Set)

260+00 Monuments (Hubs Set)

255+00 Monuments (Hubs set)

250+00 Monuments (Hubs Set)

INDEXED ON MAP

INDEXED ON MAP

INDEXED ON MAP

✓ Everett Knowlton

268+30

Kreglow

7-10-36

E. B. Roedel

51

268+30

268+20 of Drive



Storage Box

263+00

Noah H. Coover

262+12

Leon B.M. Kinross



52.25

258+77

N 85° 26' W
N 85° 26' W

placed Iron

254+65

0°-20' to ft.

Kreglow.
Oscar B. Downs

Corner of
Basement

19.45

43.50 30" dia

N. 12 E.

44.90 24" dia
N. 40 E.



57.25

246+71

N 85° 26' W
N 85° 26' W

Road 13

11/15/39
Resfaked - 60'
Care
Wilbur
Keyser
Jones
Reed

292+00 Monuments (Hubs Set)

289+00 Monuments (Hubs Set)

281+50 Monuments (Hubs Set)

278+00 Monuments (Hubs Set)

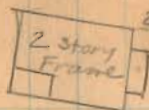
273+00 Monuments (Hubs Set)

1927

INDEXED ON MAP

7-10-36

52



292+34

N 88° 58' 00" N

← established bearing

Supt. Books

x x 289+79 x

Errett Knowlton

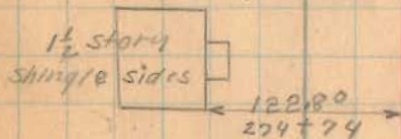
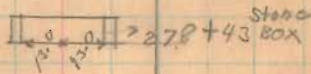
281+79
Plored Iron
92-02' Left

123.8

Starley Allen

20'
Road 2.14
20'
N 4° 34' E

E. B. Rood



N 92° 55' N
N 85° 26' W

272+79 D174

Road. 13

311+00 Monuments (Hubs Set)

308+00 Monuments (Hubs Set)

302+00 Monuments (Hubs Set)

296+00 Monuments (Hubs Set)

1727

INDEXED ON MAP

7-10-36

.53

Lawrence Milligan

Supt. Banks

Stone found.
308+38.5
No Angle

Mary C. Coover

E. & H.C. Shultz



92.00

306+96

2 story
Frame

N 85° 28' W

E. & H.C. Shultz

295+50

Starlay Alley

Road 13

330+00 Monuments (Hubs Set)

325+00 Monuments (Hubs Set)

321+00 Monuments (Hubs Set)

316+00 Monuments (Hubs Set)

1727

INDEXED ON MAP

July-13-1936

Clear - 106°

F. Wright

J. Montgomery

G. Wilgus

Joe Roberts

Max James

54

~~Dist 327+29~~



Lew Morgan
321+91

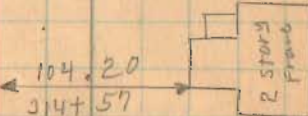
Lane

Emma S. Wilgus

Moz + 08 N

Emma S. Wilgus
316+55

Mary C. Coover



11/15/39
Restated .60'

Road 13

346+90

344+00 Monuments (Hubs Set)

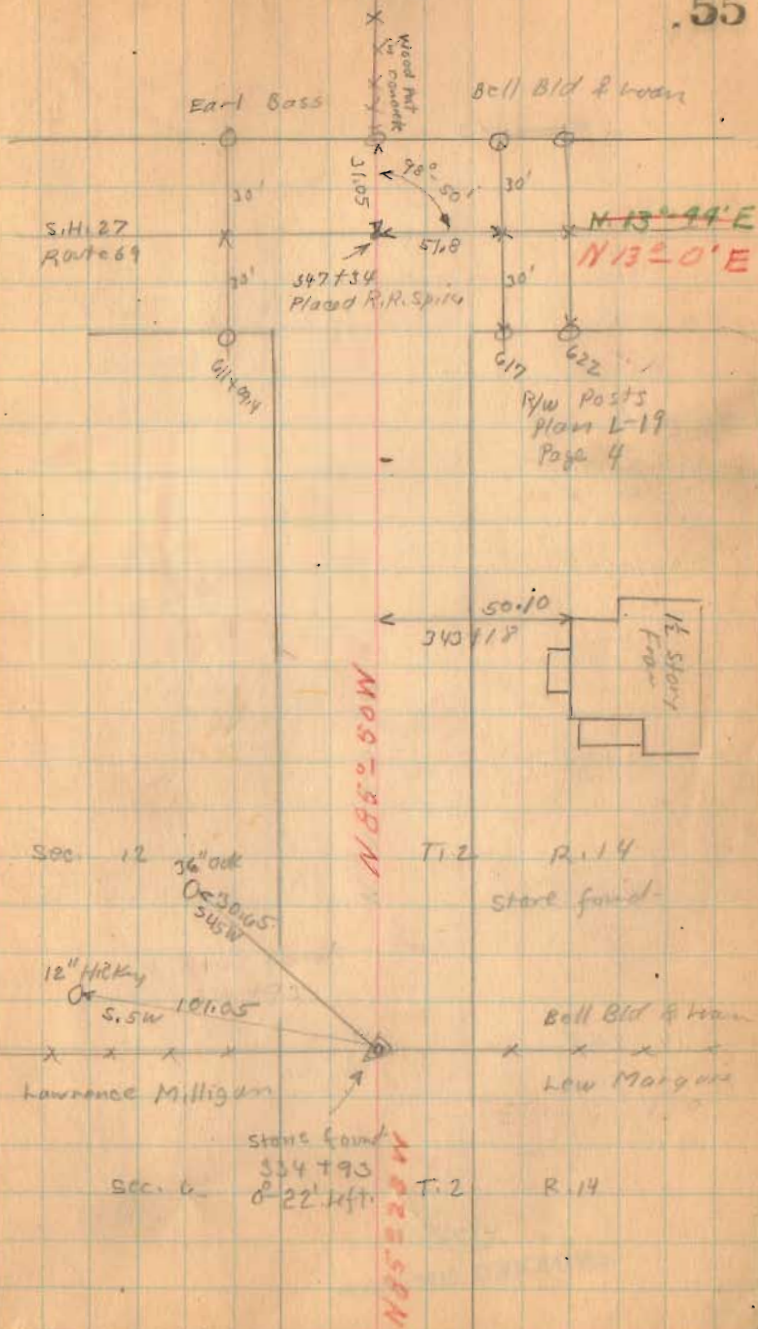
339+00 Monuments (Hubs set)

335+00 Monuments (Hubs Set)

INDEX 1722 MAP

7-15-34

55



Road 13

372+00

367+00

362+00

358+00

354+00

348+00

1727

INDEXED ON MAP

9-13-36

56

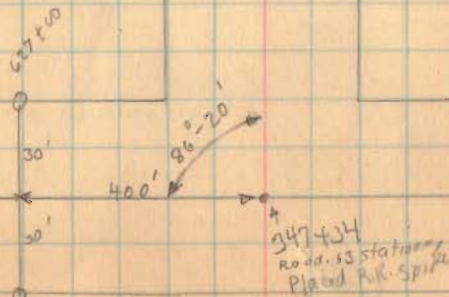
Milt McKinnon
x 360+93
Bell Bid & Loan

Milt McKinnon
x x x x
Bell Bid & Loan

12" Hickory 63.4
O ← 353+57
S.W. → H+6
No
Angle

Bell Bid & Loan

Bell Bid & Loan



Road 13

7-13-34

57

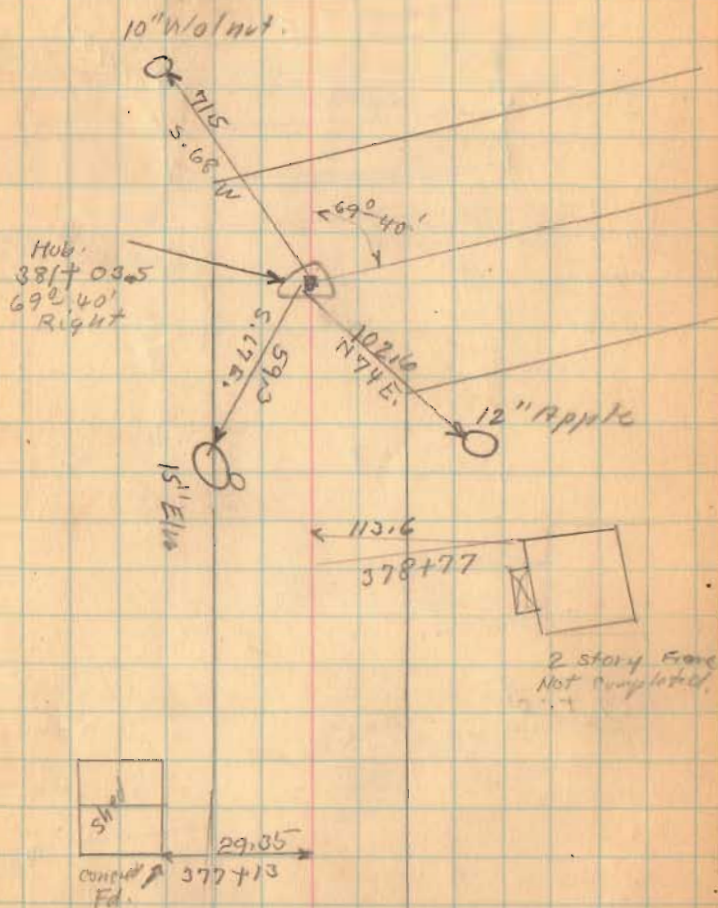
382+00

380+00

377+00

1727

INDEXED ON MAP



T.W. McKinno

Road 13

W.D. Rogers

Bridge 13-160

40083

4100

Covered Wood Bridge

7160

7105

399747

273 x 10.6

397200

404100

399700

392100

390100

T.W. McKinno

W.D. Rogers



389700

1722

INDEXED ON MAP



10' 2" 10' 2" 400
HUB
591+1615
652-40' left
N 78.0
45 W

Canon Black

100.10

5.875

1 1/2 STAIRS
FRONT

4765

5.775

6" sugar

Milton McKinno

386+29.5
Placed Iron
No Angle

W.D. Rogers

Road 247

Milton McKinno

2222

222

435

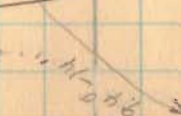
2455

W.D. Rogers

Old Post

Milton McKinno

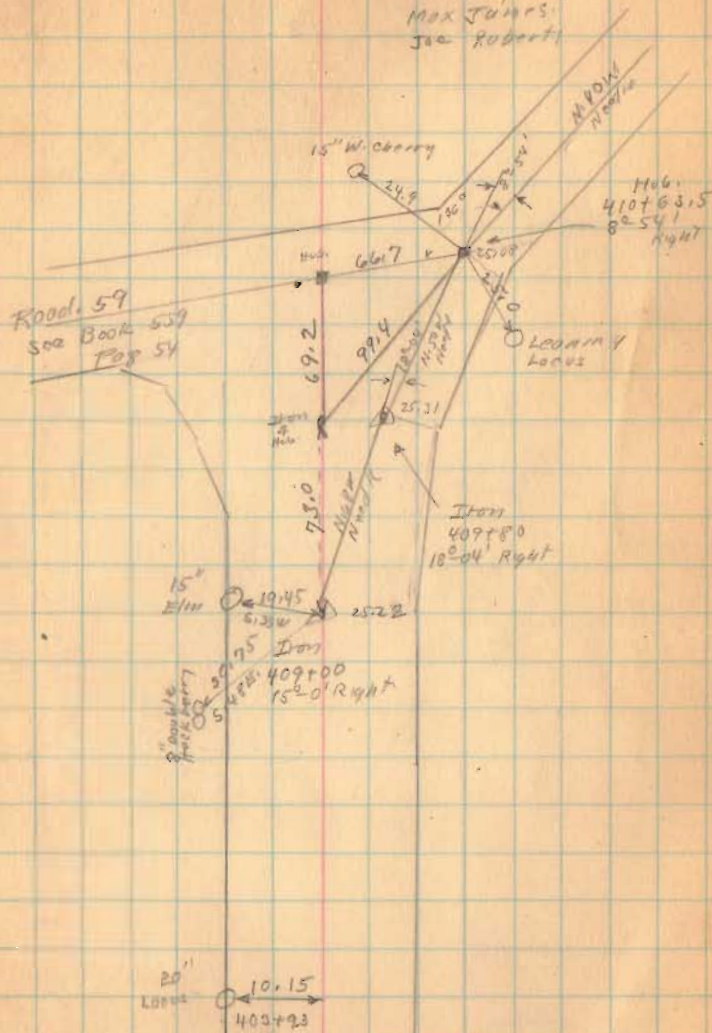
Survey to
Road 13
Left



Road. 13

July 15 - 1932
Clear - 25°
F. W. Wright
G. Wilgus
J. Montgomery
Max J. J. J.
Joe Roberts

59



410+63.5

409+80 Right only

409+00

(1727)

INDEXED ON MAP

Road, 13

420+50

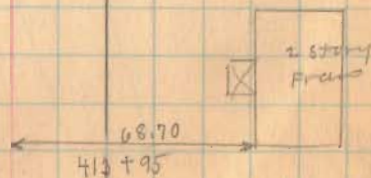
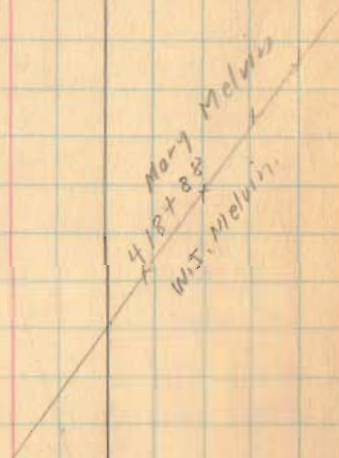
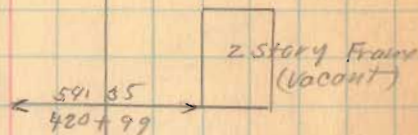
415+00

1727

INDEXED ON MAP

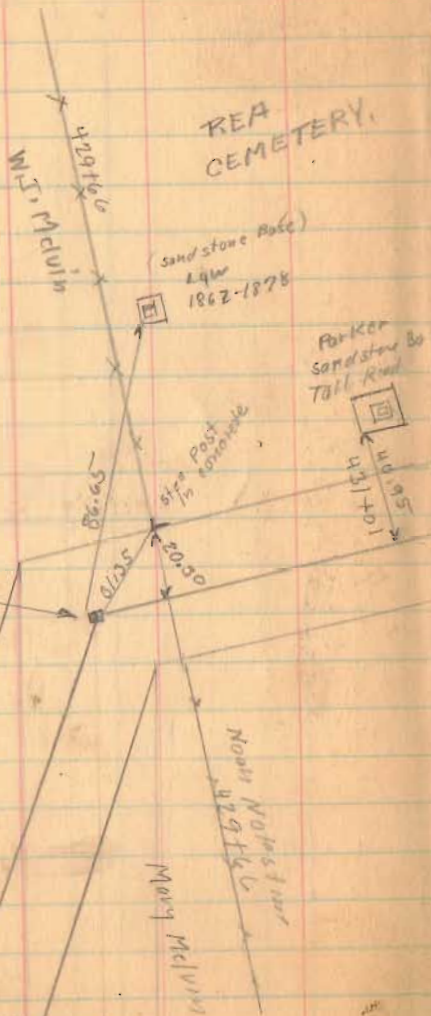
2-15-36

60



Road. 13

REA
CEMETERY.



436+65

Hub
429+40
34' 50'
Right.

430+00

429+00

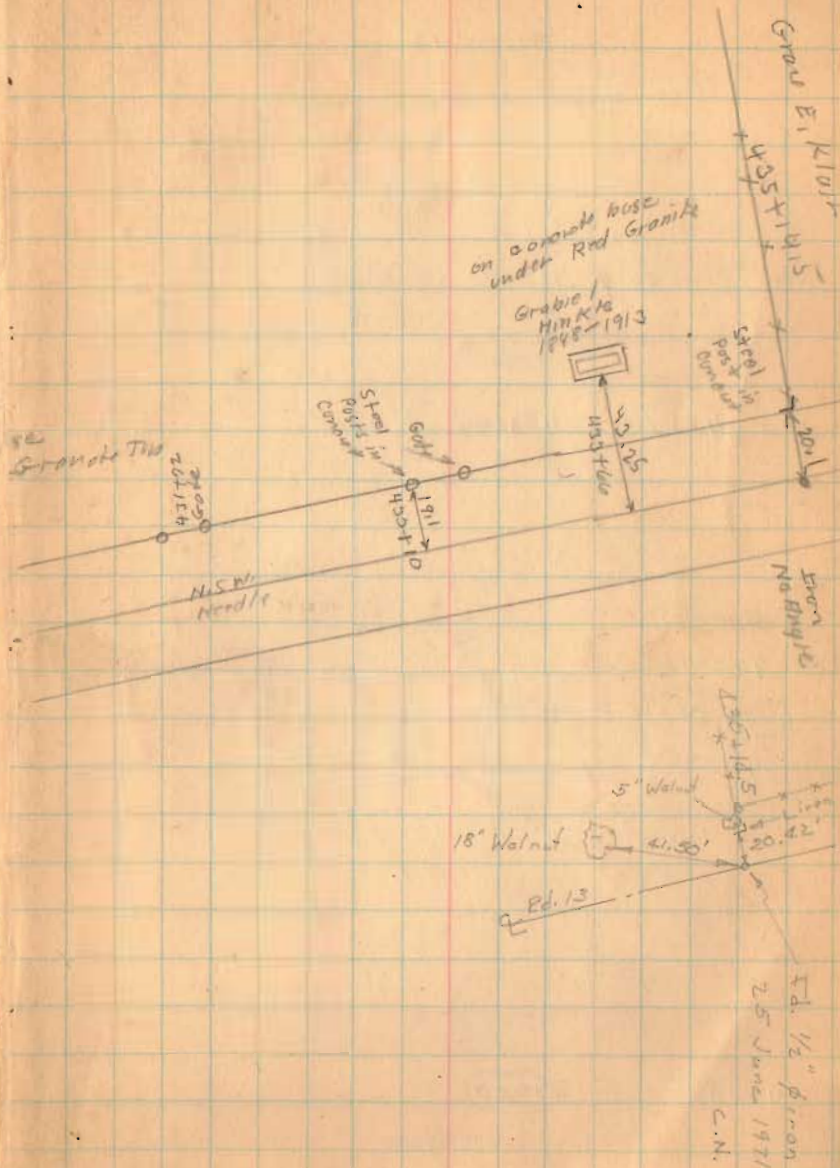
425+00

1722

INDEXED ON MAP

9-15-36

61



Gravel E. 1/2

on coarse base
under Red Granite

Gravel
Mink 10
1898-1913

Site Post
on granite

SE
Granite Tin

Gravel
Post on
granite

N.S.W.
Needle

Ed. 1/2
person

5' Walnut

15' Walnut

Ed. 13

Ed. 1/2 person
25 June 1971
C.N.

Road 13

sta. 0+00 To 444+13 = 50' Road.

sta. 444+13 To 483+99 60' Road.

450+00

446+00

444+13

441+00

Right only

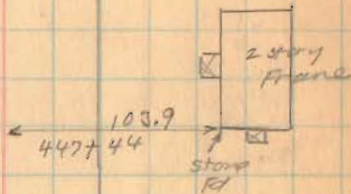
Good E. Wall
Rea
Cemetery

1727

INDEXED ON MAP

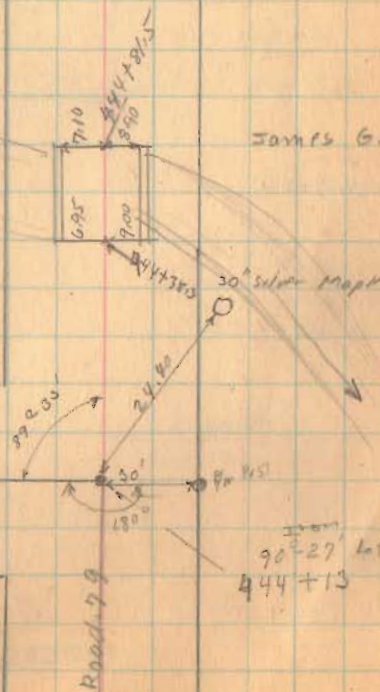
7-15-36

.62

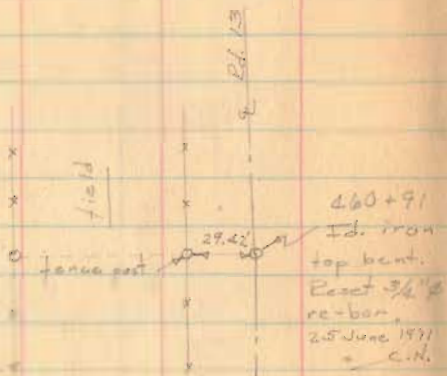


Brandwine Creek.

James G. Ellis



Road 13



469+00

461+00

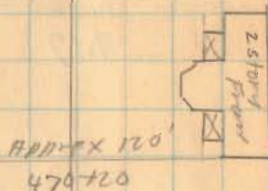
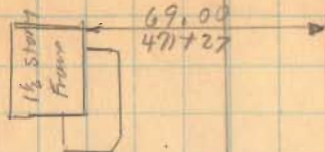
456+80

1727

INDEXED ON MAP

7-15-36

63



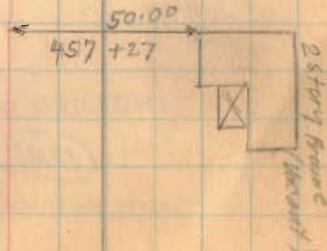
The Shelby Bid
of Lot
Gross E. Klair

460+91
Iron
0'-04" left

W.E. & G.H. Aikin

Z - Southern L.S.

457+52
Found Not signed
James O. Ellis



Road 13

Length 48399 Feet

Length 9.1665 Miles

9.17

483+50

473+00

INDEXED ON MAP

1727

INDEXED ON MAP

7-15-36

64

