

County Home Survey
Section 7, T. 2, R. 15 B.M.R.S.
Section 13, T. 2, R. 15 B.M.R.S.
Harrison Township
Logan County, Ohio
4 October 06

The following described real estate is situated in the West half of Section 7, T.2, R. 15, B.M.R.S. and East half of fractional Section 13, T.2, R.15, B.M.R.S. Harrison Township, Logan County, Ohio. Said real estate being part of the Commissioners of Logan County, Ohio's 164.35 acre tract recorded in Book T, page 177 found in the Logan County Recorder's Office.

Beginning for reference at a 1 inch square head iron bolt found on the centerline of Logan County Road No. 91. Said iron bolt being a point of intersection shown as station 233+12 in Logan County Engineer's Field Book No. 552, page 53.

Thence with the centerline of C.R. 91, S. 44° - 18' - 00"E., 384.96 feet to a railroad spike set. Said railroad spike being the true point of beginning for this real estate description.

Thence continuing with the centerline of C.R. 91, the following two, courses.

1. S. 44° - 18' - 00" E., 42.00 feet to a 1 inch square head iron bolt found. Said iron bolt being a point of intersection shown as station 237+39 in Logan County Engineer's Field Book No. 552, page 54.
2. S. 62° - 02' - 26" E., 916.79 feet to a railroad spike set.

Thence perpendicular to the centerline of C.R. 91 and onto aforesaid Commissioners 164.35 acre tract, S. 27° - 57' - 34" W., 308.69 feet to a 5/8 inch diameter capped iron bar set. The above described line passes through a 5/8 inch diameter capped iron bar set on the South right of way line of C.R. 91 at 30.00 feet.

Thence N. 62° - 21' - 29" W., 121.36 feet to a 5/8 inch diameter capped iron bar set.

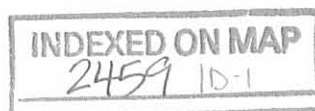
Thence S. 20° - 29' - 12" W., 61.60 feet to a 5/8 inch diameter capped iron bar set.

Thence N. 62° - 21' - 29" W., 531.51 feet to a 5/8 inch diameter capped iron bar set.

Thence S. 12° - 35' - 33" W., 88.94 feet to a 5/8 inch diameter capped iron bar set.

Thence N. 78° - 35' - 36" W., 119.93 feet to a Mag Nail set in the East line of Jean Roach's 2.388 acre tract as recorded in Official Record Volume 813, page 94 of the Logan County Recorder's Office.

Thence with said Roach's East line, N. 4° - 24' - 45" E., 552.07 feet to the point of beginning passing through a Mag Nail set on the South right of way line of C.R. 91 at 512.15 feet.



The above described tract encompasses 7.590 acre more or less, of which 0.654 acre is contained within the right of way of C.R. 91 (60.00' R/W). Section 7 contains 3.256 acres and section 13 encompasses 4.334 acres more or less.

Basis of bearing being the centerline of Logan County Road No. 91 between station 233+12 and station 237+39 (S. 44° - 18' - 00" E.) as shown on page 53 of Logan County Engineer's Field Book No. 552.

Caps placed on irons set are stamped "Logan County Engineer".

The above description represents a new survey completed by the Logan County Engineer's Office from an actual field survey performed on October 4, 2006.



Curtis D. Dill
Curtis D. Dill
Deputy Surveyor
Logan County Engineer's Office
Registered Surveyor No. 7310

INDEXED ON MAP
2459 1D-2

filed 12-19-06
9:00 PM

County Home Survey
Section 7, T.2, R. 15 B.M.R.S.
Harrison Township
Logan County, Ohio
4 October 06

The following described real estate is situated in Section 7, T.2, R.15 B.M.R.S., Harrison Township, Logan County, Ohio. Said real estate being part of the Commissioners of Logan County, Ohio's 164.35 acre tract as recorded in Book T, page 177 found in the Logan County Recorder's Office.

Beginning for reference at a 1 inch square head iron bolt found on the centerline of Logan County Road No. 91. Said iron bolt being a point of intersection shown as station 237 + 39 in Logan County Engineer's Field Book No. 552, page 54.

Thence with the centerline of C.R. 91 S. 62° - 02' - 26" E., 916.79 feet to a railroad spike set at the true point of beginning of this real estate description.

Thence continuing with the centerline of C.R. 91 the following two (2) courses:

1. S. 62° - 02' - 26" E., 30.90 feet to a PK nail found.
2. S. 63° - 23' - 15" E., 233.08 feet to a mag nail set in a bridge (No. 91-6.04) over the Flat Branch of Bokengehalas Creek. The above described line phases through a ¾ inch diameter carriage bolt found at 12.85 feet.

Thence with the center of the Flat Branch of Bokengehalas Creek and onto the foresaid Commissioner's 164.35 acre tract, S. 21° - 52' - 35" W., 142.55 feet to a point. Said point is witnessed by a 5/8 inch diameter capped iron bar set which bears N. 68° - 07' - 25" W., 30.00 feet.

Thence with a curve to the right, 878.34 feet to a point in the center of the Flat Branch of Bokengehalas Creek. Said curve has a radius of 883.93 feet and a central angle of 56° - 55' - 59". The long chord bears S. 50° - 20' - 35" W. and is 842.64 feet in length. The mid point of the above described curve is referenced by a 5/8 inch diameter capped iron bar set which bears N. 39° - 39' - 25" W., 30.00 feet.

Thence N. 20° - 29' - 12" E., 611.25 feet to a 5/8 inch diameter capped iron bar set. The above described line passes through a 5/8 inch diameter capped iron bar set at 35.49 feet and a 2 ½ X 2 ½ inch angle iron post found at 130.70 feet and a 5/8 inch diameter capped iron bar set at 549.65 feet.

Thence S. 62° - 21' - 29" E., 121.36 feet to a 5/8 inch diameter capped iron bar set.

Thence N. 27° - 57' - 34" E., 308.69 feet to the point of beginning, passing through a 5/8 inch diameter capped iron bar set on the South right of way line of C.R. 91 at 278.69 feet.



The above described tract encompasses 5.518 acre more or less of which 0.183 acre is contained within the right of way of C.R. 91 (60.00' R/W).

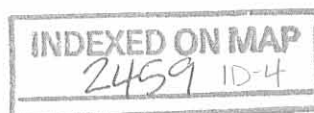
Basis of bearing being the centerline of Logan County Road No. 91 between stations 233+12 and station 237+39 (S. 44° - 18' - 00" E.) as shown on page 53 of Logan County Engineer's Field Book No. 552.

Caps placed on irons set are stamped "Logan County Engineer".

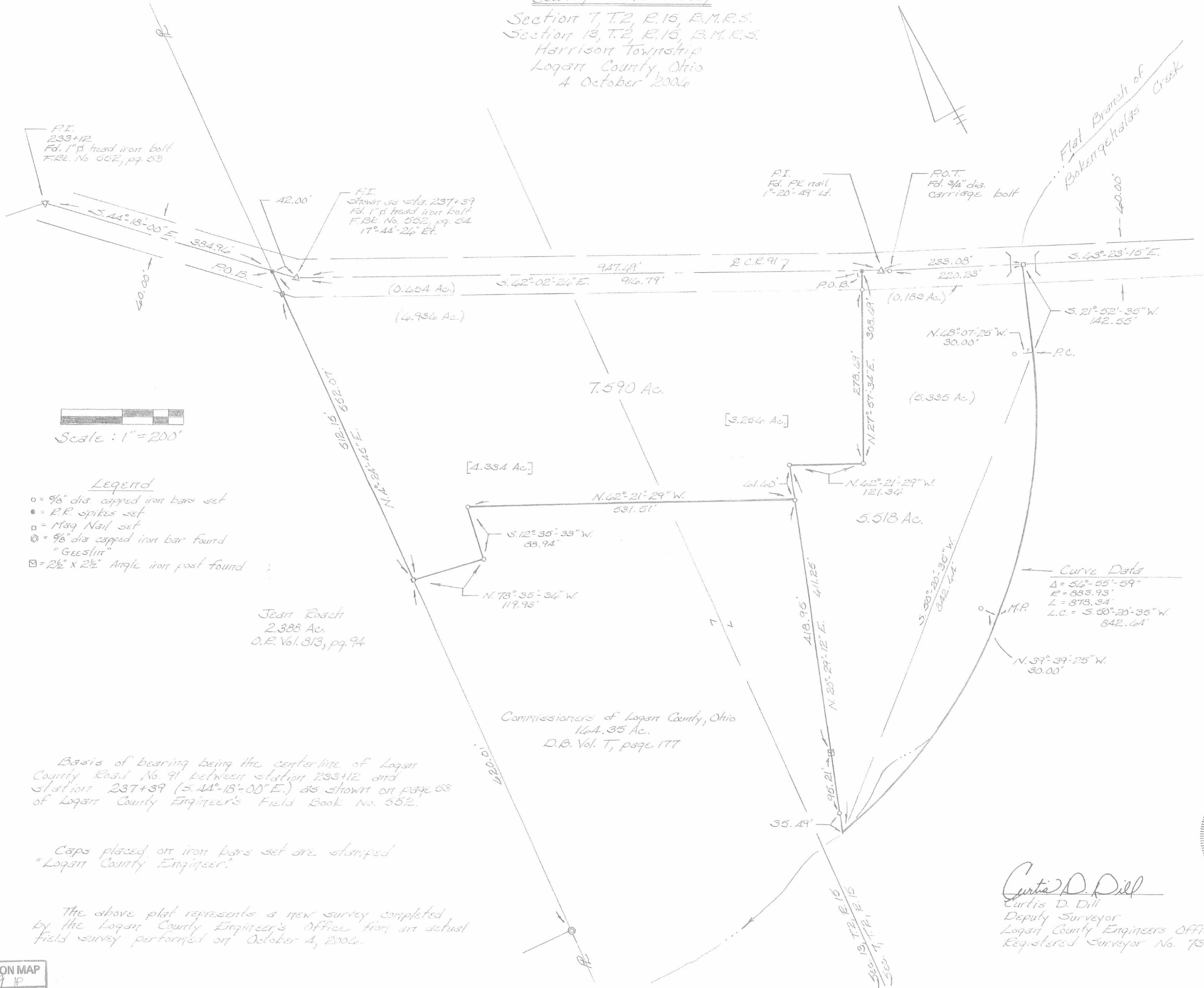
The above description represents a new survey completed by the Logan County Engineer's Office from an actual field survey performed on October 4, 2006.




Curtis D. Dill
Deputy Surveyor
Logan County Engineer's Office
Registered Surveyor No. 7310



County Home Survey
 Section 7, T.2, R.15, B.M.R.S.
 Section 13, T.2, R.15, B.M.R.S.
 Harrison Township
 Logan County, Ohio
 4 October 2006



Scale: 1" = 200'

Legend

- = 9/8" dia capped iron bars set
- = R.R. spikes set
- = 1/4" Nail set
- ⊙ = 9/8" dia capped iron bar found "Geeslin"
- ⊠ = 2 1/2" x 2 1/2" Angle iron post found

Jean Rosch
 2.388 Ac.
 O.R. Vol. 813, pg. 94

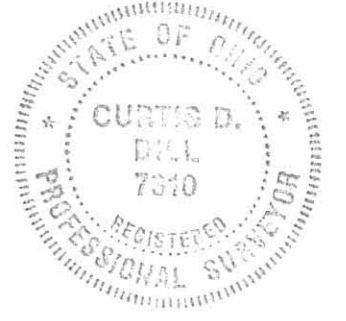
Commissioners of Logan County, Ohio
 164.35 Ac.
 D.B. Vol. T, page 177

Curve Data
 $\Delta = 54^{\circ} 35' 59''$
 $R = 853.93'$
 $L = 878.34'$
 $L.C. = S 50^{\circ} 20' 35'' W$
 $842.44'$

Basis of bearing being the centerline of Logan County Road No. 91 between station 233+12 and station 237+39 (S. 44°-18'-00" E.) as shown on page 63 of Logan County Engineer's Field Book No. 552.

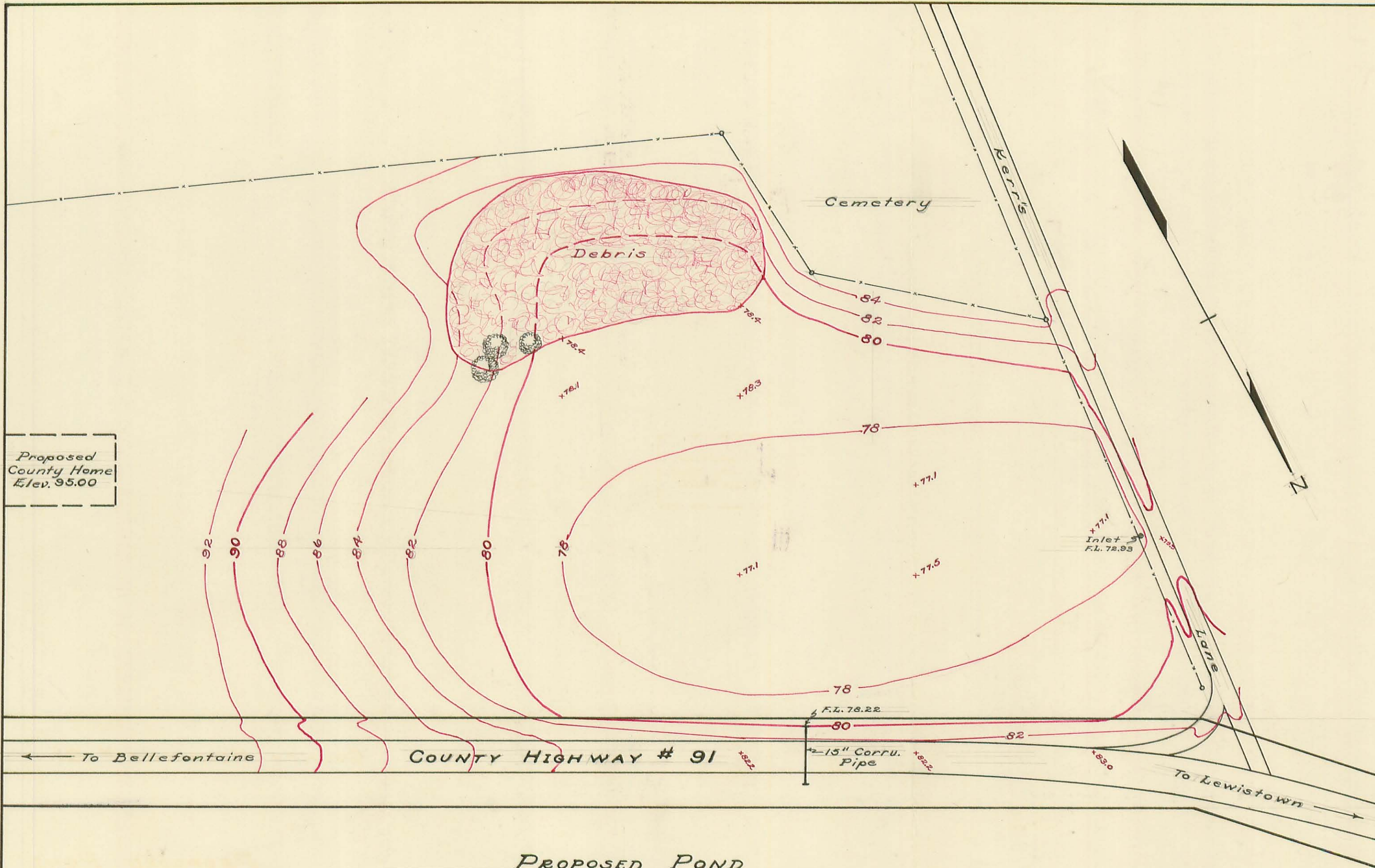
Caps placed on iron bars set are stamped "Logan County Engineer."

The above plat represents a new survey completed by the Logan County Engineer's Office from an actual field survey performed on October 4, 2006.



Curtis D. Dill
 Curtis D. Dill
 Deputy Surveyor
 Logan County Engineers Office
 Registered Surveyor No. 7310

INDEXED ON MAP
 2459 IP



Proposed
County Home
Elev. 95.00

PROPOSED POND
AT
LOGAN COUNTY HOME
1953

SCALE: 1" = 50'

B.M. - Chiseled "x" N.E.
corner north end old
walk to main entrance
to Home. Elev. 100.00

2459 2P
Indexed

Survey - S. line
Logan Co. Infirmary

Harrison Twp

Sec. 7 T2 R15

Sec. 13 T2 R15

Laura R. Harmon
92.67

Calvin Buckwalter
39.32

Charles H. Buckwalter
39.94

Addiebell Keller
24.71

Joseph A. Kerr
168.27

Logan County Infirmary
130.53

Deed -
Vol. T p 177-178
1849

Myra L.
Elliot
10.93

Levie E. McPherson

Omar B.
McPherson
22.59

51.51

Chas Mallow

N 1/2 E - 208 1/2 P

Stone 26 p ±

Conc Post

N 88 1/2 W
162.8 p

Field Book 479 p 31

Stone 32 p

Book 521-p 80
Field Book 521 p 62

Road 218

Royal W. Hill
40.00

Sec. 18 T3 R14

Geo. Kabel
156.26

Sec. 12 T3 R14

H. E.
Casth
4212

Orig. Wit: - A - 12" W. oak - S 17 1/2 W - 59
10" - W. oak - N 22 1/2 E - 9
B - 10" W. oak - S 74 E - 8
12" W. oak - N 74 E - 26

INDEXED ON MAP
2459 3P

Joseph Lawrence & Wife Vol. T Pg. 177
 to
 Commissioners of Logan County
 164. $\frac{3}{100}$ Ac. 24,108.75
 July 13, 1849

Harrison Twp.



Logan Co.
 Infirmary
 1700

Gravel & Shale
 5.90

C.H. 91

BOKENGENALAS CREEK

Sec. 7 T. 2 R. 15

17-Ac.
 Survey record
 County Record
 & Surveys
 Vol. B
 Page 252
 March 28, 26,
 1857

Sec. 13 T. 2 R. 15

Walker E. Roach et al
 (11-10-04)
 151.03

Logan County Infirmary 37.82

Logan County Home
 130.53

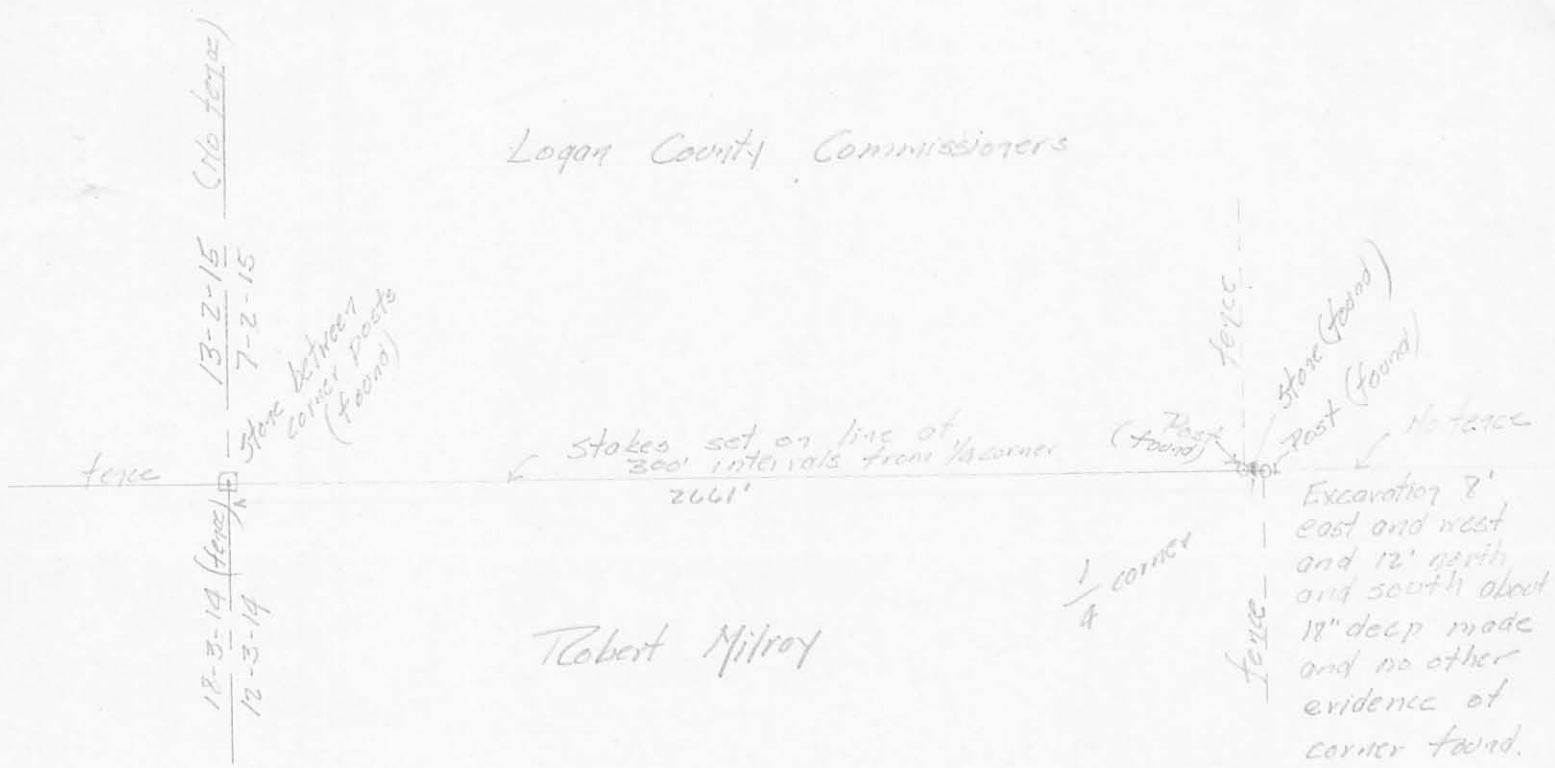
H.C. Moore
 Co. Surv.

Index 2957 HP

Vol. T Pg 177-178
 1849

03/23

Logan County Commissioners



13-2-15 (No fence)

7-2-15

Stone between corner posts (found)

fence

18-3-14 (fence)
12-3-14

Stakes set on line of 300' intervals from 1/4 corner 2661'

Post (found)

fence

Stone (found)

Post (found)

No fence

Excavation 8' east and west and 12' north and south about 18" deep made and no other evidence of corner found.

1/4 corner

fence

Robert Milroy

Survey of
 3. line of SW 1/4 of 57, T 3, R 15
 for
 Logan County Commissioners
 April 15, 1946
 Clair A. Huskeep
 Surveyor

INDEXED ON MAP
 2459 5P