

Shick Survey

Harrison Township

2.12 Acres

June 1952

The following described land in Harrison Township, Logan County Ohio,
and being in section 5 Town 3 Range 14

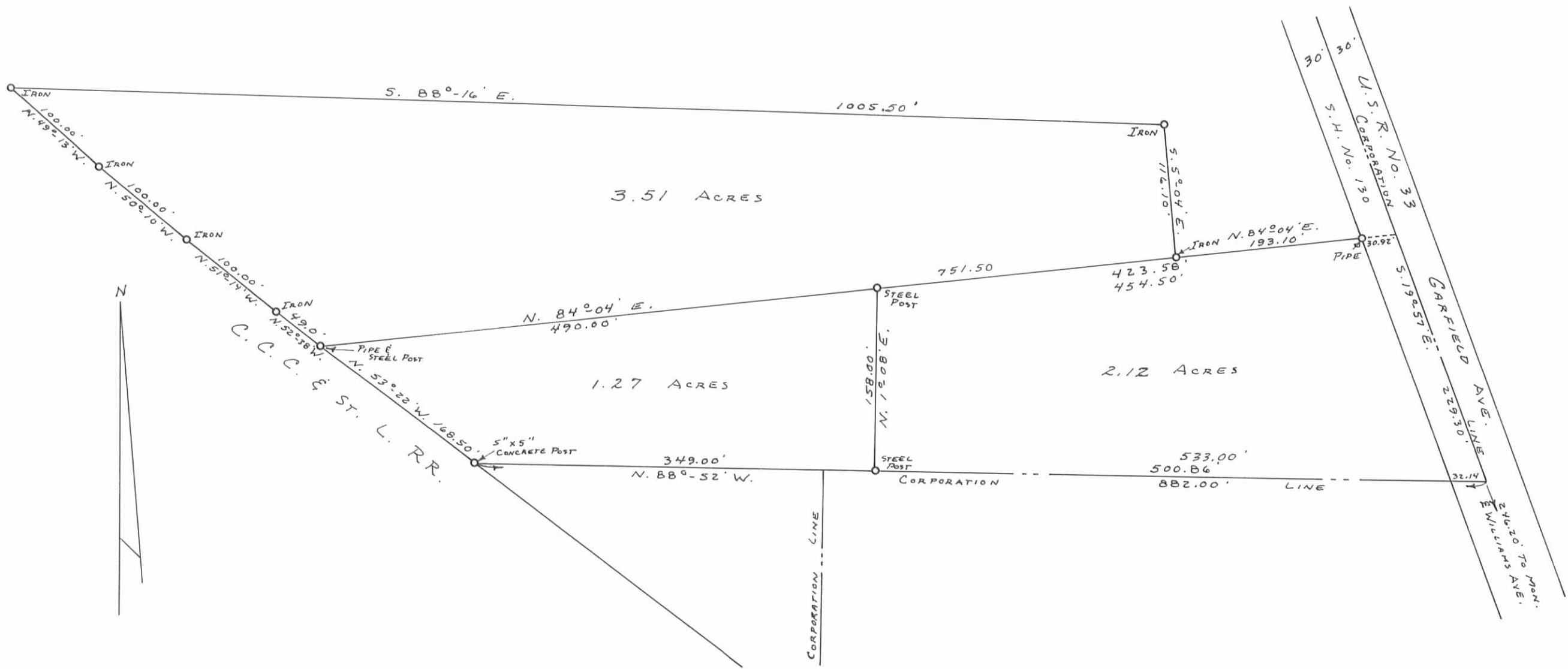
Beginning at a copper nail in a lead plug at the center line of W.
Williams Ave. and in the center of Garfield Ave. (Garfield Ave.
also being State Highway Number 130 and U.S. Route Number 33)
thence with the center of Garfield Ave. N. 19° - $57'$ W. 246.2 feet
to an angle in the Bellefontaine Corporation Line ~~thence with the~~
~~North line of the Bellefontaine Corporation~~ said angle in the
Corporation Line being the beginning point of this survey thence with
the North Bellefontaine Corporation Line N. 88° - $52'$ W. 533.0 feet to
a steel fence post the last described line being the north line of
George W. Reams 5.08 acre tract thence N. 1° - $08'$ E. 158.0 feet to
a steel fence post thence N. 84° - $04'$ E. 454.5 feet to the center of
Garfield ave. the last described line passing an iron pipe at the ~~the~~
West side of Garfield Ave. being 30.00 feet from said center line when
measured at right angles, thence with the center line of Garfield Ave.
S. 19° - $57'$ E. 229.3 feet to the place of beginning said tract containing
2.12 acres the said 2.12 acres being outside of the Bellefontaine
Corporation.

INDEXED ON MAP

cc
E.K. Core,
Logan County Engineer.

2794

ID



PENCE SURVEYS
 SECTION 5 T. 3 R. 14
 HARRISON TOWNSHIP
 LOGAN COUNTY, OHIO
 SCALE: 1" = 100'

PLATTED BY:
 DANIEL E. GILBERT, P.S.
 REG. SUR. No. 5402

INDEXED ON MAP
 2794 1P